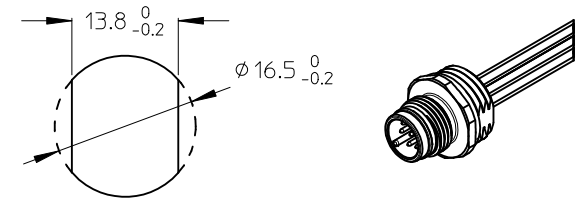


Wiring Diagram:

- 1 - WHITE / weiß
- 2 - BROWN / braun
- 3 - GREEN / grün
- 4 - YELLOW / gelb
- 5 - GREY / grau
- 6 - PINK / rosa
- 7 - BLUE / blau
- 8 - RED / rot



ITEM	COMPONENT	MATERIAL	FINISH
1	REC SHELL	BRASS	NICKEL PLATED
2	INSERT	PA	BLACK
3	CONTACT	BRASS / GOLD	CuZn Ni/ Au
4	WIRES	COPPER/PVC	NONE
5	O-RING	NBR	BLACK
6	POTTING MATERIAL	EPOXY	NONE

POL	MATERIAL NO.	ENGINEERING NO.	FINISHED LENGTH
8	1200845096	WR8U26E02C300	300 ±10
8	1200845003	WR8U26E02M010	1000 ±10

VOLTAGE RATING: 30 VAC / 36 VDC
 AMPERAGE RATING: 2 A
 PROTECTION CLASS: IP 67/68/69K
 OPERATING TEMPERATURE: -25°C / 90°C
 UL CERTIFICATION: FILE NO. E152210
 CSA CERTIFICATIONS: FILE NO. LR6837

ENTER DESCRIPTION EC NO: WEU2010-0598 DRWN:CFORDERER 2010/06/14 CHKD:RSILLER 2010/06/14 APPR:APOHL 2010/06/16	QUALITY SYMBOLS	GENERAL TOLERANCES (UNLESS SPECIFIED)		DIMENSION STYLE	SCALE	DESIGN UNITS	THIRD ANGLE PROJECTION
	▽=0 ∇=0	mm	INCH	MM ONLY	2:1	METRIC	M12U 8-P REC MALE FRONT M16X1.5 0,25MM2
		4 PLACES ± ---	± ---	DRAWN BY	DATE	TITLE	
	2	2 PLACES ± 0.05	± ---	NSTAUDIGEL	2010/01/28	MOLEX INCORPORATED	
1	1 PLACE ± 0.1	± ---	CHECKED BY	DATE	DOCUMENT NO.		
	ANGULAR ± ---°		APPROVED BY	DATE	SD-120084-020		
	DRAFT WHERE APPLICABLE MUST REMAIN WITHIN DIMENSIONS		FPACHER	2010/02/01	SHEET NO.		
			MATERIAL NO.	SEE TABLE	1 OF 1		
			SIZE	THIS DRAWING CONTAINS INFORMATION THAT IS PROPRIETARY TO MOLEX INCORPORATED AND SHOULD NOT BE USED WITHOUT WRITTEN PERMISSION			