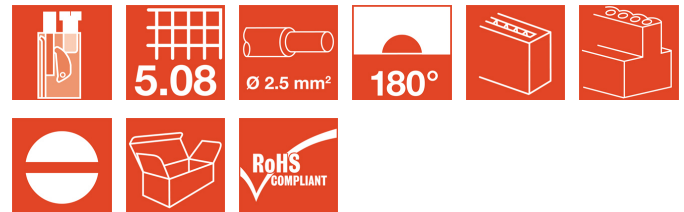


**BL/SL 5.08 series**  
**BLT 5.08/06/180 SN BK BX**

**Weidmüller Interface GmbH & Co. KG**  
 Klingenbergstraße 16  
 D-32758 Detmold  
 Germany  
 Fon: +49 5231 14-0  
 Fax: +49 5231 14-2083  
 www.weidmueller.com



Female plugs with TOP screw system for connecting wires with straight 180° outlet direction. The female plugs provide space for labelling and can be coded.

- 0.2 - 2.5 mm<sup>2</sup> (IEC) / 26 - 14 AWG (UL)
- 400 V (IEC) / 300 V (UL)
- 17 A (IEC) / 10 A (UL)

#### General ordering data

Order No.	<a href="#">1499910000</a>
Type	BLT 5.08/06/180 SN BK BX
Version	PCB plug-in connector, female plug, 5.08 mm, No. of poles: 6, 180°, TOP connection, Clamping range, rated connection, max.: 2.5 mm <sup>2</sup> , Box
Product data	IEC: 400 V / 17 A / 0.2 - 2.5 mm <sup>2</sup> UL: 300 V / 10 A / AWG 26 - AWG 14
GTIN (EAN)	4008190279363
Qty.	60 pc(s).
Packaging	Box

Creation date March 13, 2012 9:03:40 AM CET

**BL/SL 5.08 series**  
**BLT 5.08/06/180 SN BK BX**

**Weidmüller Interface GmbH & Co. KG**  
 Klingenbergstraße 16  
 D-32758 Detmold  
 Germany  
 Fon: +49 5231 14-0  
 Fax: +49 5231 14-2083  
 www.weidmueller.com

**Technical data****System parameters**

Product family	BL/SL 5.08 series	Conductor connection system	TOP connection
Outgoing direction of conductor	180°	Pitch in mm (P)	5.08 mm
Pitch in inches (P)	0.2 inch	No. of poles	6
Number of rows	1	Screwdriver blade	0.6 x 3.5
Screwdriver blade standard	DIN 5264	Tightening torque, min.	0.4 Nm
Tightening torque, max.	0.5 Nm	Clamping screw	M 2.5
Stripping length	13 mm	L1 in mm	25.4 mm
L1 in inches	1 inch	Touch-safe protection acc. to DIN VDE 57 106	Safe from finger touch

**Material data**

Insulating material	PBT	Colour	Black
Colour chart	Similar to RAL 9011	Flammability class UL 94	V-0
CTI	≥ 200	Contact material	CuSn
Contact surface	tinned	Continuous operating temp., min.	-50 °C
Continuous operating temp., max.	100 °C		


**Connectable conductors**

Clamping range, rated connection, min.	0.13 mm <sup>2</sup>	Clamping range, rated connection, max.	2.5 mm <sup>2</sup>
Wire connection cross section AWG, min.	AWG 26	Wire connection cross section AWG, max.	AWG 14
Solid, min. H05(07) V-U	0.2 mm <sup>2</sup>	Solid, max. H05(07) V-U	2.5 mm <sup>2</sup>
Flexible, min. H05(07) V-K	0.2 mm <sup>2</sup>	Flexible, max. H05(07) V-K	1.5 mm <sup>2</sup>
w. wire end ferrule, DIN 46228 pt 1, min.	0.2 mm <sup>2</sup>	w. wire end ferrule, DIN 46228 pt 1, max.	1.5 mm <sup>2</sup>
w. plastic collar ferrule, DIN 46228 pt 4, min.	0.2 mm <sup>2</sup>	w. plastic collar ferrule, DIN 46228 pt 4, max.	1.5 mm <sup>2</sup>
Plug gauge acc. to EN 60999 a x b; ø	2.4 mm x 1.5 mm ; 2.4 mm		

**DIN IEC rating data**

Rated current, min. no. of poles (Tu=20°C)	17 A	Rated current, max. no. of poles (Tu=20°C)	14 A
Rated current, number of poles (Tu=40°C), min	15 A	Rated current, number of poles (Tu=40°C), max.	11.5 A
Rated voltage for surge voltage class / pollution degree II/2	400 V	Rated voltage for surge voltage class / pollution degree III/2	320 V
Rated voltage for surge voltage class / pollution degree III/3	250 V	Rated impulse voltage for surge voltage class/ pollution degree II/2	4 kV
Rated impulse voltage for surge voltage class/ pollution degree III/2	4 kV	Rated impulse voltage for surge voltage class/ contamination degree III/3	4 kV
Short-time withstand current resistance	3 x 1s with 100 A		

**CSA rating data**

Institute (CSA)		Rated voltage (Use group B)	300 V
Rated current (use group B)	10 A	Rated voltage (use group D)	300 V
Rated current (use group D)	10 A	Wire cross-section, AWG, min.	AWG 26
Wire cross-section, AWG, max.	AWG 14		

**BL/SL 5.08 series**  
**BLT 5.08/06/180 SN BK BX**

**Weidmüller Interface GmbH & Co. KG**  
 Klingenbergstraße 16  
 D-32758 Detmold  
 Germany  
 Fon: +49 5231 14-0  
 Fax: +49 5231 14-2083  
 www.weidmueller.com

**Technical data**

**UL 1059 rating data**

Institute (UR)



Rated voltage (use group B)

300 V

Rated current (use group B)	10 A
Rated current (use group D)	10 A
Wire cross-section, AWG, max.	AWG 14

Rated voltage (use group D)	300 V
Wire cross-section, AWG, min.	AWG 26

**Classifications**

ETIM 3.0	EC001284	ETIM 4.0	EC002637
UNSPSC	30-21-18-10	eClass 4.1	27-26-07-01
eClass 5.1	27-26-07-04	eClass 6.0	27-26-07-04
eClass 7.0	27-44-04-02		

**Notes**

Notes

- Additional colours on request
- Gold-plated contact surfaces on request
- Rated current related to rated cross-section and min. No. of poles.
- Wire end ferrule without plastic collar to DIN 46228/1
- Wire end ferrule with plastic collar to DIN 46228/4
- Crimp form A for wire end ferrules with PZ 6/5 crimping tool are recommended for the largest cable sizes.
- P on drg. = pitch
- Rated data refer only to the component itself. Clearance and creepage distances to other components are to be designed in accordance with the relevant application standards.

**Approvals**

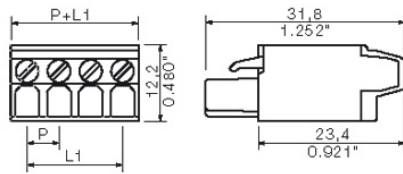
Approvals



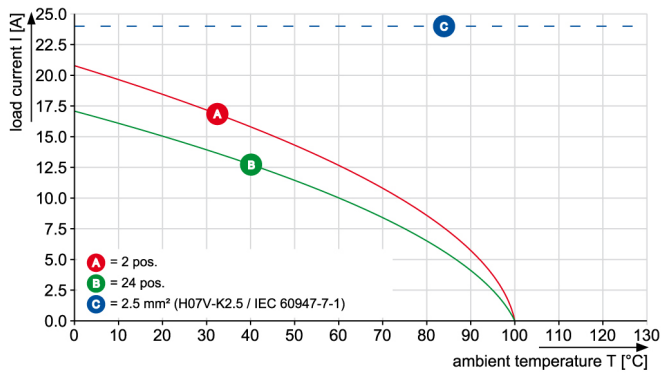
**BL/SL 5.08 series  
BLT 5.08/06/180 SN BK BX**

**Weidmüller Interface GmbH & Co. KG**  
 Klingenbergstraße 16  
 D-32758 Detmold  
 Germany  
 Fon: +49 5231 14-0  
 Fax: +49 5231 14-2083  
 www.weidmueller.com

**Drawings**



**BLT 5.08/.. /180 - SL 5.08/.. /90**



**BL/SL 5.08 series  
BLT 5.08/06/180 SN BK BX**

**Weidmüller Interface GmbH & Co. KG**  
 Klingenbergstraße 16  
 D-32758 Detmold  
 Germany  
 Fon: +49 5231 14-0  
 Fax: +49 5231 14-2083  
 www.weidmueller.com

**Mating connector (fully pluggable)**
**SL 5.08/135**


Male connectors with 135° outlet direction. The solder pin length is optimised for wave flow soldering. The pin headers provide space for labelling and can be coded.

- 400 V (IEC) / 300 V (UL)
- 17 A (IEC) / 15 A (UL)

**General ordering data**

Order No.	Type	Version	Product data	GTIN (EAN)	Qty.	Packaging
<a href="#">1603100000</a>	SL 5.08/06/135 3.2SN OR BX	PCB plug-in connector, male header, open side, Solder connection, 5.08 mm, No. of poles: 6, 135°, Solder pin length (l): 3.2 mm, tinned, Orange, Box	IEC: 400 V / 17 A UL: 300 V / 15 A	4008190101480	50 pc(s).	Box

**SL 5.08/90**


Male connectors with 90° outlet direction. The solder pin length is optimised for wave flow soldering. The pin headers provide space for labelling and can be coded.

- 400 V (IEC) / 300 V (UL)
- 18 A (IEC) / 15 A (UL)

**General ordering data**

Order No.	Type	Version	Product data	GTIN (EAN)	Qty.	Packaging
<a href="#">1508460000</a>	SL 5.08/06/90 3.2SN OR BX	PCB plug-in connector, male header, open side, Solder connection, 5.08 mm, No. of poles: 6, 90°, Solder pin length (l): 3.2 mm, tinned, Orange, Box	IEC: 400 V / 18 A UL: 300 V / 15 A	4008190132767	50 pc(s).	Box

**BL/SL 5.08 series  
BLT 5.08/06/180 SN BK BX**

**Weidmüller Interface GmbH & Co. KG**  
Klingenbergstraße 16  
D-32758 Detmold  
Germany  
Fon: +49 5231 14-0  
Fax: +49 5231 14-2083  
www.weidmueller.com

**Mating connector (fully pluggable)**
**SL 5.00/90**


Male connectors with 90° outlet direction. The solder pin length is optimised for wave flow soldering. The pin headers provide space for labelling and can be coded.

- 400 V (IEC) / 300 V (UL)
- 18 A (IEC) / 15 A (UL)

**General ordering data**

Order No.	Type	Version	Product data	GTIN (EAN)	Qty.	Packaging
<a href="#">1596180000</a>	SL 5.00/06/90 4.5SN BK BX	PCB plug-in connector, male header, open side, Solder connection, 5.00 mm, No. of poles: 6, 90°, Solder pin length (l): 4.5 mm, tinned, Black, Box	IEC: 400 V / 18 A UL: 300 V / 15 A	4008190105655	50 pc(s).	Box
<a href="#">1571170000</a>	SL 5.00/06/90 3.2SN OR BX	PCB plug-in connector, male header, open side, Solder connection, 5.00 mm, No. of poles: 6, 90°, Solder pin length (l): 3.2 mm, tinned, Orange, Box	IEC: 400 V / 18 A UL: 300 V / 15 A	4008190112325	50 pc(s).	Box

**SL-SMT 5.08/180 Tape**


High-temperature-resistant, straight, open ended male header. Packed in box or tape. In tape with 1.5 mm solder pin optimised for automatic assembly. 3.2 mm solder pin suitable for reflow and wave soldering. These male connectors provide space for labelling and can be coded.

- 400 V (IEC) / 300 V (UL)
- 19 A (IEC) / 15 A (UL)

**General ordering data**

Order No.	Type	Version	Product data	GTIN (EAN)	Qty.	Packaging
<a href="#">1775644001</a>	SL-SMT 5.08/06/180 1.5 SN BK RL	PCB plug-in connector, male header, open side, Reflow solder connection, 5.08 mm, No. of poles: 6, 180°, Solder pin length (l): 1.5 mm, tinned, Tape	IEC: 400 V / 19 A UL: 300 V / 15 A	4032248159628	250 pc(s).	Tape

**BL/SL 5.08 series  
BLT 5.08/06/180 SN BK BX**

**Weidmüller Interface GmbH & Co. KG**  
Klingenbergstraße 16  
D-32758 Detmold  
Germany  
Fon: +49 5231 14-0  
Fax: +49 5231 14-2083  
www.weidmueller.com

**Mating connector (fully pluggable)**
**SL-SMT 5.08/90 Box**


High-temperature-resistant, 90° angled, open male header  
Packed in box or tape. In tape with 1.5 mm solder pin  
optimised for automatic assembly. 3.2 mm solder pin suitable  
for reflow and wave soldering. These male connectors provide  
space for labelling and can be coded.

- 400 V (IEC) / 300 V (UL)
- 19 A (IEC) / 15 A (UL)

**General ordering data**

Order No.	Type	Version	Product data	GTIN (EAN)	Qty.	Packaging
<a href="#">1774802001</a>	SL-SMT 5.08/06/90 1.5SN BK BX	PCB plug-in connector, male header, open side, Reflow solder connection, 5.08 mm, No. of poles: 6, 90°, Solder pin length (l): 1.5 mm, tinned, Black, Box	IEC: 400 V / 19 A UL: 300 V / 15 A	4032248155835	50 pc(s).	Box
<a href="#">1779990000</a>	SL-SMT 5.08/06/90 3.2SN BK BX	PCB plug-in connector, male header, open side, Reflow solder connection, 5.08 mm, No. of poles: 6, 90°, Solder pin length (l): 3.2 mm, tinned, Black, Box	IEC: 400 V / 19 A UL: 300 V / 15 A	4032248165315	50 pc(s).	Box

**SL-SMT 5.08/180G Box**


High-temperature-resistant male header, packed in box or  
tape. In tape with 1.5 mm solder pin optimised for automatic  
assembly. 3.2 mm solder pin suitable for reflow and wave  
soldering. These male connectors provide space for labelling  
and can be coded.

- 400 V (IEC) / 300 V (UL)
- 19 A (IEC) / 15 A (UL)

**General ordering data**

Order No.	Type	Version	Product data	GTIN (EAN)	Qty.	Packaging
<a href="#">1775962001</a>	SL-SMT 5.08/06/180G 1.5SN BK BX	PCB plug-in connector, male header, closed side, Reflow solder connection, 5.08 mm, No. of poles: 6, 180°, Solder pin length (l): 1.5 mm, tinned, Box	IEC: 400 V / 19 A UL: 300 V / 15 A	4032248158959	50 pc(s).	Box
<a href="#">1838250000</a>	SL-SMT 5.08/06/180G 3.2SN BK BX	PCB plug-in connector, male header, closed side, Reflow solder connection, 5.08 mm, No. of poles: 6, 180°, Solder pin length (l): 3.2 mm, tinned, Box	IEC: 400 V / 19 A UL: 300 V / 15 A	4032248348312	50 pc(s).	Box

**BL/SL 5.08 series  
BLT 5.08/06/180 SN BK BX**

**Weidmüller Interface GmbH & Co. KG**  
Klingenbergstraße 16  
D-32758 Detmold  
Germany  
Fon: +49 5231 14-0  
Fax: +49 5231 14-2083  
www.weidmueller.com

**Mating connector (fully pluggable)**
**SLD 5.08/90G**


2-tier male header with parallel pin arrangement. The solder pin length is optimised for wave flow soldering. The pin headers provide space for labelling and can be coded.

- 400 V (IEC) / 300 V (UL)
- 11 A (IEC) / 10 A (UL)

**General ordering data**

Order No.	Type	Version	Product data	GTIN (EAN)	Qty.	Packaging
<a href="#">1601830000</a>	SLD 5.08/12/90G 3.2SN OR BX	PCB plug-in connector, male header, closed side, Solder connection, 5.08 mm, No. of poles: 12, 90°, Solder pin length (l): 3.2 mm, tinned, Orange, Box	IEC: 400 V / 11 A UL: 300 V / 10 A	4008190158798	50 pc(s).	Box

**SL-SMT 5.08/90G Box**


High-temperature-resistant male header, packed in box or tape. In tape with 1.5 mm solder pin optimised for automatic assembly. 3.2 mm solder pin suitable for reflow and wave soldering. These male connectors provide space for labelling and can be coded.

- 400 V (IEC) / 300 V (UL)
- 19 A (IEC) / 15 A (UL)

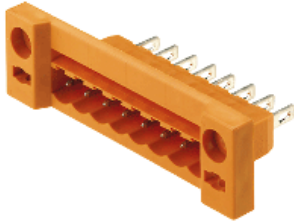
**General ordering data**

Order No.	Type	Version	Product data	GTIN (EAN)	Qty.	Packaging
<a href="#">1775042001</a>	SL-SMT 5.08/06/90G 1.5SN BK BX	PCB plug-in connector, male header, closed side, Reflow solder connection, 5.08 mm, No. of poles: 6, 90°, Solder pin length (l): 1.5 mm, tinned, Black, Box	IEC: 400 V / 19 A UL: 300 V / 15 A	4032248156108	50 pc(s).	Box
<a href="#">1780220000</a>	SL-SMT 5.08/06/90G 3.2SN BK BX	PCB plug-in connector, male header, closed side, Reflow solder connection, 5.08 mm, No. of poles: 6, 90°, Solder pin length (l): 3.2 mm, tinned, Black, Box	IEC: 400 V / 19 A UL: 300 V / 15 A	4032248165544	50 pc(s).	Box



**BL/SL 5.08 series  
BLT 5.08/06/180 SN BK BX**

**Weidmüller Interface GmbH & Co. KG**  
 Klingenbergstraße 16  
 D-32758 Detmold  
 Germany  
 Fon: +49 5231 14-0  
 Fax: +49 5231 14-2083  
 www.weidmueller.com

**Mating connector (fully pluggable)**
**SLDF 5.08**


Male connector for through-panel mounting with optional locking function. Internal connection as flat-blade or solder connection. These male connectors provide space for labelling and can be coded.

- 400 V (IEC) / 300 V (UL)
- 15 A (IEC) / 10 A (UL)

**General ordering data**

Order No.	Type	Version	Product data	GTIN (EAN)	Qty.	Packaging
<a href="#">1599170000</a>	SLDF 5.08 L/F 6 SN OR BX	PCB plug-in connector, male header, 5.08 mm, No. of poles: 6, 180°, Box	IEC: 400 V / 15 A UL: 300 V / 10 A	4008190179595	50 pc(s).	Box

**SL-SMT 5.08/90G Tape**


High-temperature-resistant male header, packed in box or tape. In tape with 1.5 mm solder pin optimised for automatic assembly. 3.2 mm solder pin suitable for reflow and wave soldering. These male connectors provide space for labelling and can be coded.

- 400 V (IEC) / 300 V (UL)
- 19 A (IEC) / 15 A (UL)

**General ordering data**

Order No.	Type	Version	Product data	GTIN (EAN)	Qty.	Packaging
<a href="#">1775044001</a>	SL-SMT 5.08/06/90G 1.5 SN BK RL	PCB plug-in connector, male header, closed side, Reflow solder connection, 5.08 mm, No. of poles: 6, 90°, Solder pin length (l): 1.5 mm, tinned, Black, Tape	IEC: 400 V / 19 A UL: 300 V / 15 A	4032248167760	350 pc(s).	Tape

**BL/SL 5.08 series  
BLT 5.08/06/180 SN BK BX**

**Weidmüller Interface GmbH & Co. KG**  
 Klingenbergstraße 16  
 D-32758 Detmold  
 Germany  
 Fon: +49 5231 14-0  
 Fax: +49 5231 14-2083  
 www.weidmueller.com

**Mating connector (fully pluggable)**
**SL 5.08/180**


Male connectors with straight outlet direction. The solder pin length is optimised for wave flow soldering. The pin headers provide space for labelling and can be coded.

- 400 V (IEC) / 300 V (UL)
- 18 A (IEC) / 15 A (UL)

**General ordering data**

Order No.	Type	Version	Product data	GTIN (EAN)	Qty.	Packaging
<a href="#">1517680000</a>	SL 5.08/06/180 3.2 SN OR BX	PCB plug-in connector, male header, open side, Solder connection, 5.08 mm, No. of poles: 6, 180°, Solder pin length (l): 3.2 mm, tinned, Orange, Box	IEC: 400 V / 18 A UL: 300 V / 15 A	4008190139445	50 pc(s).	Box

**SLD 5.08/180G**


2-tier male header with parallel pin arrangement. The solder pin length is optimised for wave flow soldering. The pin headers provide space for labelling and can be coded.

- 400 V (IEC) / 300 V (UL)
- 11 A (IEC) / 10 A (UL)

**General ordering data**

Order No.	Type	Version	Product data	GTIN (EAN)	Qty.	Packaging
<a href="#">1602430000</a>	SLD 5.08/12/180G 3.2SN OR BX	PCB plug-in connector, male header, closed side, Solder connection, 5.08 mm, No. of poles: 12, 180°, Solder pin length (l): 3.2 mm, tinned, Orange, Box	IEC: 400 V / 11 A UL: 300 V / 10 A	4008190045692	50 pc(s).	Box

**BL/SL 5.08 series  
BLT 5.08/06/180 SN BK BX**

**Weidmüller Interface GmbH & Co. KG**  
Klingenbergstraße 16  
D-32758 Detmold  
Germany  
Fon: +49 5231 14-0  
Fax: +49 5231 14-2083  
www.weidmueller.com

**Mating connector (fully pluggable)**
**SL-SMT 5.08/180G Tape**


High-temperature-resistant male header, packed in box or tape. In tape with 1.5 mm solder pin optimised for automatic assembly. 3.2 mm solder pin suitable for reflow and wave soldering. These male connectors provide space for labelling and can be coded.

- 400 V (IEC) / 300 V (UL)
- 19 A (IEC) / 15 A (UL)

**General ordering data**

Order No.	Type	Version	Product data	GTIN (EAN)	Qty.	Packaging
<a href="#">1775964001</a>	SL-SMT 5.08/06/180G 1.5 SN BK RL	PCB plug-in connector, male header, closed side, Reflow solder connection, 5.08 mm, No. of poles: 6, 180°, Solder pin length (l): 1.5 mm, tinned, Tape	IEC: 400 V / 19 A UL: 300 V / 15 A	4032248160174	250 pc(s).	Tape

**SL-SMT 5.08/90 Tape**


High-temperature-resistant, 90° angled, open male header  
Packed in box or tape. In tape with 1.5 mm solder pin optimised for automatic assembly. 3.2 mm solder pin suitable for reflow and wave soldering. These male connectors provide space for labelling and can be coded.

- 400 V (IEC) / 300 V (UL)
- 19 A (IEC) / 15 A (UL)

**General ordering data**

Order No.	Type	Version	Product data	GTIN (EAN)	Qty.	Packaging
<a href="#">1774804001</a>	SL-SMT 5.08/06/90 1.5 SN BK RL	PCB plug-in connector, male header, open side, Reflow solder connection, 5.08 mm, No. of poles: 6, 90°, Solder pin length (l): 1.5 mm, tinned, Black, Tape	IEC: 400 V / 19 A UL: 300 V / 15 A	4032248167692	350 pc(s).	Tape

**BL/SL 5.08 series  
BLT 5.08/06/180 SN BK BX**

**Weidmüller Interface GmbH & Co. KG**  
 Klingenbergstraße 16  
 D-32758 Detmold  
 Germany  
 Fon: +49 5231 14-0  
 Fax: +49 5231 14-2083  
 www.weidmueller.com

**Mating connector (fully pluggable)**
**SL-SMT 5.08/180 Box**


High-temperature-resistant, straight, open ended male header. Packed in box or tape. In tape with 1.5 mm solder pin optimised for automatic assembly. 3.2 mm solder pin suitable for reflow and wave soldering. These male connectors provide space for labelling and can be coded.

- 400 V (IEC) / 300 V (UL)
- 19 A (IEC) / 15 A (UL)

**General ordering data**

Order No.	Type	Version	Product data	GTIN (EAN)	Qty.	Packaging
<a href="#">1775642001</a>	SL-SMT 5.08/06/180 1.5SN BK BX	PCB plug-in connector, male header, open side, Reflow solder connection, 5.08 mm, No. of poles: 6, 180°, Solder pin length (l): 1.5 mm, tinned, Box	IEC: 400 V / 19 A UL: 300 V / 15 A	4032248157587	50 pc(s).	Box
<a href="#">1838020000</a>	SL-SMT 5.08/06/180 3.2SN BK BX	PCB plug-in connector, male header, open side, Reflow solder connection, 5.08 mm, No. of poles: 6, 180°, Solder pin length (l): 3.2 mm, tinned, Box	IEC: 400 V / 19 A UL: 300 V / 15 A	4032248348084	50 pc(s).	Box

**BL/SL 5.08 series  
BLT 5.08/06/180 SN BK BX**

**Weidmüller Interface GmbH & Co. KG**  
Klingenbergstraße 16  
D-32758 Detmold  
Germany  
Fon: +49 5231 14-0  
Fax: +49 5231 14-2083  
www.weidmueller.com

**Mating connector (conditionally pluggable)**
**SL-SMT 5.08/180LF Tape**


High-temperature-resistant male header, packed in box or tape. In tape with 1.5 mm solder pin optimised for automatic assembly. 3.2 mm solder pin suitable for reflow and wave soldering. These male connectors provide space for labelling and can be coded.

- 400 V (IEC) / 300 V (UL)
- 19 A (IEC) / 15 A (UL)

**General ordering data**

Order No.	Type	Version	Product data	GTIN (EAN)	Qty.	Packaging
<a href="#">1776404001</a>	SL-SMT 5.08/06/180LF 1.5 SN BK RL	PCB plug-in connector, male header, Solder flange, Reflow solder connection, 5.08 mm, No. of poles: 6, 180°, Solder pin length (l): 1.5 mm, tinned, Black, Tape	IEC: 400 V / 19 A UL: 300 V / 15 A	4032248163625	250 pc(s).	Tape

**SL-SMT 5.08/180LF Box**


High-temperature-resistant male header, packed in box or tape. In tape with 1.5 mm solder pin optimised for automatic assembly. 3.2 mm solder pin suitable for reflow and wave soldering. These male connectors provide space for labelling and can be coded.

- 400 V (IEC) / 300 V (UL)
- 19 A (IEC) / 15 A (UL)

**General ordering data**

Order No.	Type	Version	Product data	GTIN (EAN)	Qty.	Packaging
<a href="#">1838480000</a>	SL-SMT 5.08/06/180LF 3.2SN BK BX	PCB plug-in connector, male header, Solder flange, Reflow solder connection, 5.08 mm, No. of poles: 6, 180°, Solder pin length (l): 3.2 mm, tinned, Black, Box	IEC: 400 V / 19 A UL: 300 V / 15 A	4032248348541	50 pc(s).	Box
<a href="#">1776402001</a>	SL-SMT 5.08/06/180LF 1.5SN BK BX	PCB plug-in connector, male header, Solder flange, Reflow solder connection, 5.08 mm, No. of poles: 6, 180°, Solder pin length (l): 1.5 mm, tinned, Black, Box	IEC: 400 V / 19 A UL: 300 V / 15 A	4032248159185	50 pc(s).	Box

**BL/SL 5.08 series  
BLT 5.08/06/180 SN BK BX**

**Weidmüller Interface GmbH & Co. KG**  
Klingenbergstraße 16  
D-32758 Detmold  
Germany  
Fon: +49 5231 14-0  
Fax: +49 5231 14-2083  
www.weidmueller.com

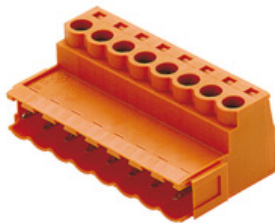
**Mating connector (conditionally pluggable)**
**SLDV-THR 5.08/180F**


High-temperature resistant, double level, laterally offset, male connector with flange or solder flange. 1.5 mm solder pin is suitable for reflow soldering. 3.2 mm solder pin suitable for reflow and wave soldering. The pin headers provide space for labelling and can be coded.

- 400 V (IEC) / 300 V (UL)
- 15 A (IEC) / 10 A (UL)

**General ordering data**

Order No.	Type	Version	Product data	GTIN (EAN)	Qty.	Packaging
<a href="#">1828810000</a>	SLDV-THR 5.08/12/180F 3.2SN BK BX	PCB plug-in connector, male header, Flange, Reflow solder connection, 5.08 mm, No. of poles: 12, 180°, Solder pin length (l): 3.2 mm, tinned, Box	IEC: 400 V / 15 A UL: 300 V / 10 A	4032248335497	50 pc(s).	Box
<a href="#">1828930000</a>	SLDV-THR 5.08/12/180F 1.5SN BK BX	PCB plug-in connector, male header, Flange, Reflow solder connection, 5.08 mm, No. of poles: 12, 180°, Solder pin length (l): 1.5 mm, tinned, Box	IEC: 400 V / 15 A UL: 300 V / 10 A	4032248335626	50 pc(s).	Box

**SLS 5.08/180B**


Male plugs with clamping-yoke screw wire-connect system. The male plugs provide space for labelling and can be coded.

- 0.2 - 2.5 mm<sup>2</sup> (IEC) / 26 - 12 AWG (UL)
- 400 V (IEC) / 300 V (UL)
- 21.5 A (IEC) / 15 A (UL)

**General ordering data**

Order No.	Type	Version	Product data	GTIN (EAN)	Qty.	Packaging
<a href="#">1627280000</a>	SLS 5.08/06/180B SN OR BX	PCB plug-in connector, male plug, 5.08 mm, No. of poles: 6, 180°, Clamping yoke connection, Clamping range, rated connection, max.: 3.31 mm <sup>2</sup> , Box	IEC: 400 V / 21.5 A / UL: 300 V / 15 A / AWG 26 - AWG 12	4008190199791	50 pc(s).	Box

**BL/SL 5.08 series  
BLT 5.08/06/180 SN BK BX**

**Weidmüller Interface GmbH & Co. KG**  
Klingenbergstraße 16  
D-32758 Detmold  
Germany  
Fon: +49 5231 14-0  
Fax: +49 5231 14-2083  
www.weidmueller.com

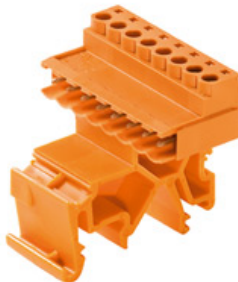
**Mating connector (conditionally pluggable)**
**SL-SMT 5.08/90F Box**


High-temperature-resistant male header, packed in box or tape. In tape with 1.5 mm solder pin optimised for automatic assembly. 3.2 mm solder pin suitable for reflow and wave soldering. These male connectors provide space for labelling and can be coded.

- 400 V (IEC) / 300 V (UL)
- 19 A (IEC) / 15 A (UL)

**General ordering data**

Order No.	Type	Version	Product data	GTIN (EAN)	Qty.	Packaging
<a href="#">1837670000</a>	SL-SMT 5.08/06/90F 3.2SN BK BX	PCB plug-in connector, male header, Flange, Reflow solder connection, 5.08 mm, No. of poles: 6, 90°, Solder pin length (l): 3.2 mm, tinned, Black, Box	IEC: 400 V / 19 A UL: 300 V / 15 A	4032248347483	50 pc(s).	Box

**SLS 5.08TB KF35**


Male plugs with clamping-yoke screw wire-connect system. With clip-on feet for attaching the male plugs on rail. The male plugs provide space for labelling and can be coded.

- 0.2 - 2.5 mm<sup>2</sup> (IEC) / 26 - 12 AWG (UL)
- 400 V (IEC) / 300 V (UL)
- 21.5 A (IEC) / 15 A (UL)

**General ordering data**

Order No.	Type	Version	Product data	GTIN (EAN)	Qty.	Packaging
<a href="#">1846140000</a>	SLS 5.08/06/180TB KF SN OR BX	PCB plug-in connector, male plug, 5.08 mm, No. of poles: 6, 180°, Clamping yoke connection, Clamping range, rated connection, max.: 3.31 mm <sup>2</sup> , Box	IEC: 400 V / 21.5 A / 0.2 - 2.5 mm <sup>2</sup> UL: 300 V / 15 A / AWG 26 - AWG 12	4032248362424	20 pc(s).	Box

**BL/SL 5.08 series  
BLT 5.08/06/180 SN BK BX**

**Weidmüller Interface GmbH & Co. KG**  
Klingenbergstraße 16  
D-32758 Detmold  
Germany  
Fon: +49 5231 14-0  
Fax: +49 5231 14-2083  
www.weidmueller.com

**Mating connector (conditionally pluggable)**
**SLZF 5.08/90B**


Male plugs with tension-clamp wire connection. The male plugs provide space for labelling and can be coded.

- 0.2 - 2.5 mm<sup>2</sup> (IEC) / 26 - 14 AWG (UL)
- 400 V (IEC) / 300 V (UL)
- 23 A (IEC) / 15 A (UL)

**General ordering data**

Order No.	Type	Version	Product data	GTIN (EAN)	Qty.	Packaging
<a href="#">1673590000</a>	SLZF 5.08/06/90B SN OR BX	PCB plug-in connector, male plug, 5.08 mm, No. of poles: 6, 90°, Tension clamp connection, Clamping range, rated connection, max.: 3.31 mm <sup>2</sup> , Box	IEC: 400 V / 20.5 A / 0.2 - 2.5 mm <sup>2</sup> UL: 300 V / 15 A / AWG 26 - AWG 12	4008190435301	50 pc(s).	Box

**SLS 5.08/180F**


Male plugs with clamping-yoke screw wire-connect system. The male plugs provide space for labelling and can be coded.

- 0.2 - 2.5 mm<sup>2</sup> (IEC) / 26 - 12 AWG (UL)
- 400 V (IEC) / 300 V (UL)
- 21.5 A (IEC) / 15 A (UL)

**General ordering data**

Order No.	Type	Version	Product data	GTIN (EAN)	Qty.	Packaging
<a href="#">1846400000</a>	SLS 5.08/06/180F SN OR BX	PCB plug-in connector, male plug, 5.08 mm, No. of poles: 6, 180°, Clamping yoke connection, Clamping range, rated connection, max.: 3.31 mm <sup>2</sup> , Box	IEC: 400 V / 21.5 A / 0.2 - 2.5 mm <sup>2</sup> UL: 300 V / 15 A / AWG 26 - AWG 12	4032248362103	50 pc(s).	Box



**BL/SL 5.08 series  
BLT 5.08/06/180 SN BK BX**

**Weidmüller Interface GmbH & Co. KG**  
 Klingenbergstraße 16  
 D-32758 Detmold  
 Germany  
 Fon: +49 5231 14-0  
 Fax: +49 5231 14-2083  
 www.weidmueller.com

**Mating connector (conditionally pluggable)**
**SLZF 5.08/180B**


Male plugs with tension-clamp wire connection. The male plugs provide space for labelling and can be coded.

- 0.2 - 2.5 mm<sup>2</sup> (IEC) / 26 - 14 AWG (UL)
- 400 V (IEC) / 300 V (UL)
- 23 A (IEC) / 15 A (UL)

**General ordering data**

Order No.	Type	Version	Product data	GTIN (EAN)	Qty.	Packaging
<a href="#">1710250000</a>	SLZF 5.08/06/180B SN OR BX	PCB plug-in connector, male plug, 5.08 mm, No. of poles: 6, 180°, Tension clamp connection, Clamping range, rated connection, max.: 3.31 mm <sup>2</sup> , Box	IEC: 400 V / 23 A / 0.2 - 2.5 mm <sup>2</sup> UL: 300 V / 15 A / AWG 26 - AWG 12	4008190319564	50 pc(s).	Box

**SL-SMT 5.00/90LF Box**


High-temperature-resistant male header, packed in box or tape. In tape with 1.5 mm solder pin optimised for automatic assembly. 3.2 mm solder pin suitable for reflow and wave soldering. These male connectors provide space for labelling and can be coded.

- 400 V (IEC) / 300 V (UL)
- 19 A (IEC) / 15 A (UL)

**General ordering data**

Order No.	Type	Version	Product data	GTIN (EAN)	Qty.	Packaging
<a href="#">1797270000</a>	SL-SMT 5.00/06/90LF 1.5SN BK BX	PCB plug-in connector, male header, Solder flange, Reflow solder connection, 5.00 mm, No. of poles: 6, 90°, Solder pin length (l): 1.5 mm, tinned, Box	IEC: 400 V / 19 A UL: 300 V / 15 A	4032248238057	50 pc(s).	Box
<a href="#">1840390000</a>	SL-SMT 5.00/06/90LF 3.2SN BK BX	PCB plug-in connector, male header, Solder flange, Reflow solder connection, 5.00 mm, No. of poles: 6, 90°, Solder pin length (l): 3.2 mm, tinned, Box	IEC: 400 V / 19 A UL: 300 V / 15 A	4032248351237	50 pc(s).	Box

**BL/SL 5.08 series**  
**BLT 5.08/06/180 SN BK BX**

Weidmüller Interface GmbH &amp; Co. KG

Klingenbergstraße 16

D-32758 Detmold

Germany

Fon: +49 5231 14-0

Fax: +49 5231 14-2083

www.weidmueller.com

**Mating connector (conditionally pluggable)**
**SL 5.08/135B**


Male connectors with 135° outlet direction. The solder pin length is optimised for wave flow soldering. The pin headers provide space for labelling and can be coded.

- 400 V (IEC) / 300 V (UL)
- 17 A (IEC) / 15 A (UL)

**General ordering data**

Order No.	Type	Version	Product data	GTIN (EAN)	Qty.	Packaging
<a href="#">1605570000</a>	SL 5.08/06/135B 3.2SN OR BX	PCB plug-in connector, male header, Dovetails for fixing blocks, Solder connection, 5.08 mm, No. of poles: 6, 135°, Solder pin length (l): 3.2 mm, tinned, Orange, Box	IEC: 400 V / 17 A UL: 300 V / 15 A	4008190268756	50 pc(s).	Box

**SLT 5.08B**


Male plugs with screw TOP wire connection. The male plug provides space for labelling and can be coded.

- 0.2 - 2.5 mm<sup>2</sup> (IEC) / 26 - 14 AWG (UL)
- 400 V (IEC) / 300 V (UL)
- 16 A (IEC) / 10 A (UL)

**General ordering data**

Order No.	Type	Version	Product data	GTIN (EAN)	Qty.	Packaging
<a href="#">1611750000</a>	SLT 5.08/06/180B SN OR BX	PCB plug-in connector, male plug, 5.08 mm, No. of poles: 6, 180°, TOP connection, Clamping range, rated connection, max.: 2.5 mm <sup>2</sup> , Box	IEC: 400 V / 16 A / UL: 300 V / 10 A / AWG 26 - AWG 14	4008190192631	50 pc(s).	Box

**BL/SL 5.08 series  
BLT 5.08/06/180 SN BK BX**

**Weidmüller Interface GmbH & Co. KG**  
Klingenbergstraße 16  
D-32758 Detmold  
Germany  
Fon: +49 5231 14-0  
Fax: +49 5231 14-2083  
www.weidmueller.com

**Mating connector (conditionally pluggable)**
**SLZF 5.08/180FI**


Male plugs with tension-clamp wire connection. The male plugs provide space for labelling and can be coded.

- 0.2 - 2.5 mm<sup>2</sup> (IEC) / 26 - 14 AWG (UL)
- 400 V (IEC) / 300 V (UL)
- 23 A (IEC) / 15 A (UL)

**General ordering data**

Order No.	Type	Version	Product data	GTIN (EAN)	Qty.	Packaging
<a href="#">1846550000</a>	SLZF 5.08/06/180FI SN OR BX	PCB plug-in connector, male plug, 5.08 mm, No. of poles: 6, 180°, Tension clamp connection, Clamping range, rated connection, max.: 3.31 mm <sup>2</sup> , Box	IEC: 400 V / 23 A / 0.2 - 2.5 mm <sup>2</sup> / 300 V / 15 A / AWG 26 - AWG 12	4032248362851	50 pc(s).	Box

**SLDV-THR 5.08/180FLF**


High-temperature resistant, double level, laterally offset, male connector with flange or solder flange. 1.5 mm solder pin is suitable for reflow soldering. 3.2 mm solder pin suitable for reflow and wave soldering. The pin headers provide space for labelling and can be coded.

- 400 V (IEC) / 300 V (UL)
- 15 A (IEC) / 10 A (UL)

**General ordering data**

Order No.	Type	Version	Product data	GTIN (EAN)	Qty.	Packaging
<a href="#">1829050000</a>	SLDV-THR 5.08/12/180FLF 3.2SN BK BX	PCB plug-in connector, male header, Flange / Solder flange, Reflow solder connection, 5.08 mm, No. of poles: 12, 180°, Solder pin length (l): 3.2 mm, tinned, Box	IEC: 400 V / 15 A / 300 V / 10 A	4032248335749	50 pc(s).	Box
<a href="#">1829170000</a>	SLDV-THR 5.08/12/180FLF 1.5SN BK BX	PCB plug-in connector, male header, Flange / Solder flange, Reflow solder connection, 5.08 mm, No. of poles: 12, 180°, Solder pin length (l): 1.5 mm, tinned, Box	IEC: 400 V / 15 A / 300 V / 10 A	4032248335862	50 pc(s).	Box

**BL/SL 5.08 series  
BLT 5.08/06/180 SN BK BX**

**Weidmüller Interface GmbH & Co. KG**  
Klingenbergstraße 16  
D-32758 Detmold  
Germany  
Fon: +49 5231 14-0  
Fax: +49 5231 14-2083  
www.weidmueller.com

**Mating connector (conditionally pluggable)**
**SL 5.00/90B**


Male connectors with 90° outlet direction. The solder pin length is optimised for wave flow soldering. The pin headers provide space for labelling and can be coded.

- 400 V (IEC) / 300 V (UL)
- 18 A (IEC) / 15 A (UL)

**General ordering data**

Order No.	Type	Version	Product data	GTIN (EAN)	Qty.	Packaging
<a href="#">1580900000</a>	SL 5.00/06/90B 3.2SN OR BX	PCB plug-in connector, male header, Dovetails for fixing blocks, Solder connection, 5.00 mm, No. of poles: 6, 90°, Solder pin length (l): 3.2 mm, tinned, Orange, Box	IEC: 400 V / 18 A UL: 300 V / 15 A	4008190130695	50 pc(s).	Box

**SL-SMT 5.08/180F Box**


High-temperature-resistant male header, packed in box or tape. In tape with 1.5 mm solder pin optimised for automatic assembly. 3.2 mm solder pin suitable for reflow and wave soldering. These male connectors provide space for labelling and can be coded.

- 400 V (IEC) / 300 V (UL)
- 19 A (IEC) / 15 A (UL)

**General ordering data**

Order No.	Type	Version	Product data	GTIN (EAN)	Qty.	Packaging
<a href="#">1820610000</a>	SL-SMT 5.08/06/180F 3.2SN BK BX	PCB plug-in connector, male header, Flange, Reflow solder connection, 5.08 mm, No. of poles: 6, 180°, Solder pin length (l): 3.2 mm, tinned, Black, Box	IEC: 400 V / 19 A UL: 300 V / 15 A	4032248316571	50 pc(s).	Box
<a href="#">1837340000</a>	SL-SMT 5.08/06/180F 1.5SN BK BX	PCB plug-in connector, male header, Flange, Reflow solder connection, 5.08 mm, No. of poles: 6, 180°, Solder pin length (l): 1.5 mm, tinned, Black, Box	IEC: 400 V / 19 A UL: 300 V / 15 A	4032248345939	50 pc(s).	Box

**BL/SL 5.08 series  
BLT 5.08/06/180 SN BK BX**

**Weidmüller Interface GmbH & Co. KG**  
Klingenbergstraße 16  
D-32758 Detmold  
Germany  
Fon: +49 5231 14-0  
Fax: +49 5231 14-2083  
www.weidmueller.com

**Mating connector (conditionally pluggable)**

**SL 5.08/180B**



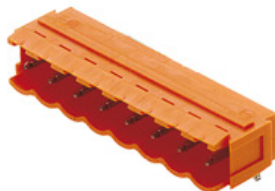
Male connectors with straight outlet direction. The solder pin length is optimised for wave flow soldering. The pin headers provide space for labelling and can be coded.

- 400 V (IEC) / 300 V (UL)
- 18 A (IEC) / 15 A (UL)

**General ordering data**

Order No.	Type	Version	Product data	GTIN (EAN)	Qty.	Packaging
<a href="#">1519960000</a>	SL 5.08/06/180B 3.2 SN OR BX	PCB plug-in connector, male header, Dovetails for fixing blocks, Solder connection, 5.08 mm, No. of poles: 6, Solder pin length (l): 3.2 mm, tinned, Orange, Box	IEC: 400 V / 18 A UL: 300 V / 15 A	4008190011901	50 pc(s).	Box

**SL 5.08/90B**



Male connectors with 90° outlet direction. The solder pin length is optimised for wave flow soldering. The pin headers provide space for labelling and can be coded.

- 400 V (IEC) / 300 V (UL)
- 18 A (IEC) / 15 A (UL)

**General ordering data**

Order No.	Type	Version	Product data	GTIN (EAN)	Qty.	Packaging
<a href="#">1510760000</a>	SL 5.08/06/90B 3.2SN OR BX	PCB plug-in connector, male header, Dovetails for fixing blocks, Solder connection, 5.08 mm, No. of poles: 6, Solder pin length (l): 3.2 mm, tinned, Orange, Box	IEC: 400 V / 18 A UL: 300 V / 15 A	4008190157951	50 pc(s).	Box

**BL/SL 5.08 series  
BLT 5.08/06/180 SN BK BX**

**Weidmüller Interface GmbH & Co. KG**  
Klingenbergstraße 16  
D-32758 Detmold  
Germany  
Fon: +49 5231 14-0  
Fax: +49 5231 14-2083  
www.weidmueller.com

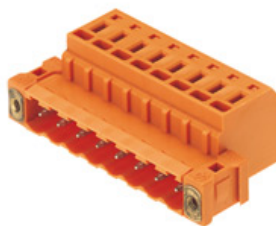
**Mating connector (conditionally pluggable)**
**SL-SMT 5.08/90LF Box**


High-temperature-resistant male header, packed in box or tape. In tape with 1.5 mm solder pin optimised for automatic assembly. 3.2 mm solder pin suitable for reflow and wave soldering. These male connectors provide space for labelling and can be coded.

- 400 V (IEC) / 300 V (UL)
- 19 A (IEC) / 15 A (UL)

**General ordering data**

Order No.	Type	Version	Product data	GTIN (EAN)	Qty.	Packaging
<a href="#">1780450000</a>	SL-SMT 5.08/06/90LF 3.2SN BK BX	PCB plug-in connector, male header, Solder flange, Reflow solder connection, 5.08 mm, No. of poles: 6, 90°, Solder pin length (l): 3.2 mm, tinned, Black, Box	IEC: 400 V / 19 A UL: 300 V / 15 A	4032248165773	50 pc(s).	Box
<a href="#">1775272001</a>	SL-SMT 5.08/06/90LF 1.5SN BK BX	PCB plug-in connector, male header, Solder flange, Reflow solder connection, 5.08 mm, No. of poles: 6, 90°, Solder pin length (l): 1.5 mm, tinned, Black, Box	IEC: 400 V / 19 A UL: 300 V / 15 A	4032248157259	50 pc(s).	Box

**SLZF 5.08/180F**


Male plugs with tension-clamp wire connection. The male plugs provide space for labelling and can be coded.

- 0.2 - 2.5 mm<sup>2</sup> (IEC) / 26 - 14 AWG (UL)
- 400 V (IEC) / 300 V (UL)
- 23 A (IEC) / 15 A (UL)

**General ordering data**

Order No.	Type	Version	Product data	GTIN (EAN)	Qty.	Packaging
<a href="#">1846980000</a>	SLZF 5.08/06/180F SN OR BX	PCB plug-in connector, male plug, 5.08 mm, No. of poles: 6, 180°, Tension clamp connection, Clamping range, rated connection, max.: 3.31 mm <sup>2</sup> , Box	IEC: 400 V / 23 A / 0.2 - 2.5 mm <sup>2</sup> UL: 300 V / 15 A / AWG 26 - AWG 12	4032248363148	50 pc(s).	Box

**BL/SL 5.08 series  
BLT 5.08/06/180 SN BK BX**

**Weidmüller Interface GmbH & Co. KG**  
Klingenbergstraße 16  
D-32758 Detmold  
Germany  
Fon: +49 5231 14-0  
Fax: +49 5231 14-2083  
www.weidmueller.com

**Mating connector (conditionally pluggable)**
**SLZF 5.08/270B**


Male plugs with tension-clamp wire connection. The male plugs provide space for labelling and can be coded.

- 0.2 - 2.5 mm<sup>2</sup> (IEC) / 26 - 14 AWG (UL)
- 400 V (IEC) / 300 V (UL)
- 23 A (IEC) / 15 A (UL)

**General ordering data**

Order No.	Type	Version	Product data	GTIN (EAN)	Qty.	Packaging
<a href="#">1706180000</a>	SLZF 5.08/06/270B SN OR BX	PCB plug-in connector, male plug, 5.08 mm, No. of poles: 6, 270°, Tension clamp connection, Clamping range, rated connection, max.: 3.31 mm <sup>2</sup> , Box	IEC: 400 V / 20.5 A / 0.2 - 2.5 mm <sup>2</sup> / 300 V / 15 A / AWG 26 - AWG 12	4032248127931	50 pc(s).	Box

**SL-SMT 5.08/90LF Tape**


High-temperature-resistant male header, packed in box or tape. In tape with 1.5 mm solder pin optimised for automatic assembly. 3.2 mm solder pin suitable for reflow and wave soldering. These male connectors provide space for labelling and can be coded.

- 400 V (IEC) / 300 V (UL)
- 19 A (IEC) / 15 A (UL)

**General ordering data**

Order No.	Type	Version	Product data	GTIN (EAN)	Qty.	Packaging
<a href="#">1775274001</a>	SL-SMT 5.08/06/90LF 1.5 SN BK RL	PCB plug-in connector, male header, Solder flange, Reflow solder connection, 5.08 mm, No. of poles: 6, 90°, Solder pin length (l): 1.5 mm, tinned, Black, Tape	IEC: 400 V / 19 A / 300 V / 15 A	4032248167838	350 pc(s).	Tape

**BL/SL 5.08 series  
BLT 5.08/06/180 SN BK BX**

**Weidmüller Interface GmbH & Co. KG**  
Klingenbergstraße 16  
D-32758 Detmold  
Germany  
Fon: +49 5231 14-0  
Fax: +49 5231 14-2083  
www.weidmueller.com

**Mating connector (conditionally pluggable)**
**SL-SMT 5.00/90LF Tape**


High-temperature-resistant male header, packed in box or tape. In tape with 1.5 mm solder pin optimised for automatic assembly. 3.2 mm solder pin suitable for reflow and wave soldering. These male connectors provide space for labelling and can be coded.

- 400 V (IEC) / 300 V (UL)
- 19 A (IEC) / 15 A (UL)

**General ordering data**

Order No.	Type	Version	Product data	GTIN (EAN)	Qty.	Packaging
<a href="#">179790000</a>	SL-SMT 5.00/06/90LF 1.5SN BK RL	PCB plug-in connector, male header, Solder flange, Reflow solder connection, 5.00 mm, No. of poles: 6, 90°, Solder pin length (l): 1.5 mm, tinned, Tape	IEC: 400 V / 19 A UL: 300 V / 15 A	4032248239795	350 pc(s).	Tape

**SLS 5.08TB RF15**


Male plugs with clamping-yoke screw wire-connect system. With clip-on feet for attaching the male plugs on rail. The male plugs provide space for labelling and can be coded.

- 0.2 - 2.5 mm<sup>2</sup> (IEC) / 26 - 12 AWG (UL)
- 400 V (IEC) / 300 V (UL)
- 21.5 A (IEC) / 15 A (UL)

**General ordering data**

Order No.	Type	Version	Product data	GTIN (EAN)	Qty.	Packaging
<a href="#">184606000</a>	SLS 5.08/06/180TB RF15 SN OR BX	PCB plug-in connector, male plug, 5.08 mm, No. of poles: 6, 180°, Clamping yoke connection, Clamping range, rated connection, max.: 3.31 mm <sup>2</sup> , Box	IEC: 400 V / 21.5 A / 0.2 - 2.5 mm <sup>2</sup> UL: 300 V / 15 A / AWG 26 - AWG 12	4032248362349	20 pc(s).	Box



**BL/SL 5.08 series**  
**BLT 5.08/06/180 SN BK BX**

**Weidmüller Interface GmbH & Co. KG**  
 Klingenbergstraße 16  
 D-32758 Detmold  
 Germany  
 Fon: +49 5231 14-0  
 Fax: +49 5231 14-2083  
 www.weidmueller.com

**Mating connector (conditionally pluggable)**

**SLS 5.08/180FI**



Male plugs with clamping-yoke screw wire-connect system.  
 The male plugs provide space for labelling and can be coded.

- 0.2 - 2.5 mm<sup>2</sup> (IEC) / 26 - 12 AWG (UL)
- 400 V (IEC) / 300 V (UL)
- 21.5 A (IEC) / 15 A (UL)

**General ordering data**

Order No.	Type	Version	Product data	GTIN (EAN)	Qty.	Packaging
<a href="#">1846250000</a>	SLS 5.08/06/180FI SN OR BX	PCB plug-in connector, male plug, 5.08 mm, No. of poles: 6, 180°, Clamping yoke connection, Clamping range, rated connection, max.: 3.31 mm <sup>2</sup> , Box	IEC: 400 V / 21.5 A / 0.2 - 2.5 mm <sup>2</sup> UL: 300 V / 15 A / AWG 26 - AWG 12	4032248362530	50 pc(s).	Box

