

**PLEASE CHECK WWW.MOLEX.COM FOR LATEST PART INFORMATION**

**Part Number:** [50-57-9014](#)  
**Status:** **Active**  
**Overview:** [SL™ Modular Connectors](#)  
**Description:** 2.54mm Pitch SL™ Crimp Housing, Single Row, Version A, Non-polarized, 14 Circuits

**Documents:**

<a href="#">3D Model</a>	<a href="#">Product Specification PS-71851 (PDF)</a>
<a href="#">Drawing (PDF)</a>	<a href="#">Test Summary TS-70058-001 (PDF)</a>
<a href="#">Product Specification PS-70058 (PDF)</a>	<a href="#">RoHS Certificate of Compliance (PDF)</a>
<a href="#">Product Specification PS-70400 (PDF)</a>	

**Agency Certification**

CSA	LR19980
TUV	R72081037
UL	E29179

**General**

Product Family	Crimp Housings
Series	<a href="#">70066</a>
Application	Signal, Wire-to-Board
Comments	Version A
Overview	<a href="#">SL™ Modular Connectors</a>
Product Name	SL™

**Physical**

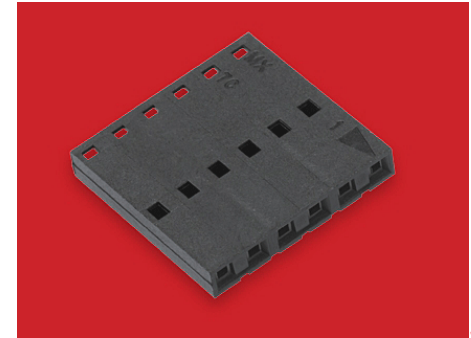
Circuits (maximum)	14
Color - Resin	Black
Flammability	94V-0
Gender	Female
Glow-Wire Compliant	No
Material - Resin	Polyester Alloy
Number of Rows	1
Packaging Type	Bag
Panel Mount	No
Pitch - Mating Interface	2.54mm
Stackable	Yes
Temperature Range - Operating	-40°C to +105°C

**Material Info**

Old Part Number	70066-0013
UPC	800753629653

**Reference - Drawing Numbers**

Product Specification	PS-70058, PS-70400, PS-71851
Sales Drawing	SD-70066-0001-0024
Test Summary	TS-70058-001



Series

image - Reference only

**EU RoHS**

**ELV and RoHS  
Compliant**  
**REACH SVHC  
Contains SVHC: No  
Low-Halogen Status  
Not Reviewed**

**China RoHS**



**Need more information on product  
environmental compliance?**

Email [productcompliance@molex.com](mailto:productcompliance@molex.com)  
 For a multiple part number RoHS Certificate of  
 Compliance, [click here](#)

Please visit the [Contact Us](#) section for any  
 non-product compliance questions.

**Search Parts in this Series**

[70066Series](#)

**Mates With**

[8624](#) , [70203](#) , [70206](#) , [42375](#) , [42377](#)

**Use With**

[70058](#) , [71851](#)