

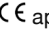


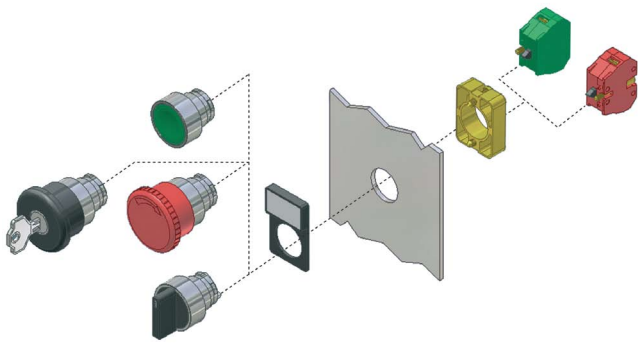
# CONTROL PRODUCTS

## 22mm Diameter Control Switches

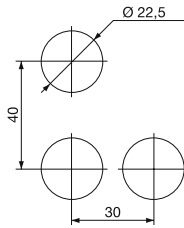
- Metal bodied control Push-Buttons, E-stops & selector switches
- Rated 600V, 10A max AC
- Operating frequency 3,600 per hour
- Panels mount 1-6mm thick
- Positive opening operation
- Conform to IEC 947-5-1 & EN 60947-5-1
- Terminal marking to EN 50013
- Other button options available to order
-  ,  approved

### SPECIFICATION

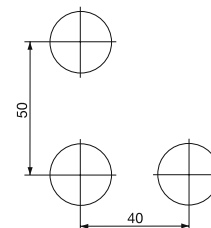
Rated voltage		600V
Rated AC current	24V	10A
	240V	6A
	400V	4A
Rated DC current	24V	2.8A
	125V	0.55A
	250V	0.27A
Short circuit protection	gG fuse	10A
Impulse withstand		6kV
Internal resistance		<25mΩ
Wire acceptance		0.75-2.5mm <sup>2</sup>
Rated temperature	Operating	-25° to +70°
	Storage	-40° to +80°
Body / escutcheon		Chromium plated
Protection	Electrical	Class I
	Water Ingress	IP65
Life		1x10 <sup>6</sup> operation



230V & same polarity panel spacing

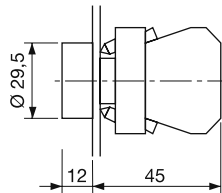


400V & different polarity panel spacing



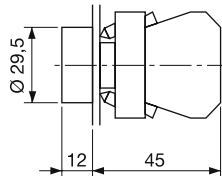
### Flush Push Buttons

TYPE NO.	COLOUR
CCTTR30BK	Black
CCTTR30RD	Red
CCTTR30GW	Green
CCTTR30YW	Yellow
CCTTR30BL	Blue
CCTTR30WH	White



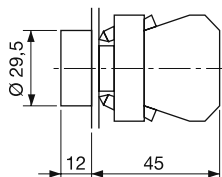
### On/Off Push Buttons

TYPE NO.	COLOUR
CCTTR00RD	Red -0
CCTTR01GN	Green -1



### Arrow Push Buttons

TYPE NO.	COLOUR
CCTTRAHBK	Horizontal
CCTTRAVBK	Vertical



PCB  
TERMINAL  
BLOCKS

INTER-  
CONNECTION

FUSES &  
FUSE-  
HOLDERS

LEDs &  
INDICATORS

MINIATURE  
SWITCHES

LIMIT &  
SAFETY  
SWITCHES

CONTROL  
PRODUCTS

INTERFACE  
MODULES &  
SUPPORTS

RELAY  
BASES

ENCLOSURES

BATTERIES

TRANS-  
FORMERS



+44 (0)1638 716101  
info@camdenboss.com  
www.camdenboss.com

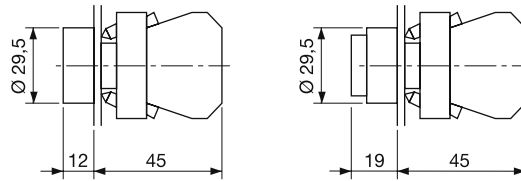
We operate a constant improvement policy,  
our products are subject to change without notice.

**CAMDENBOSS**  
ELECTRONICS & ENCLOSURES

# CONTROL PRODUCTS

## Start/Stop Push Buttons

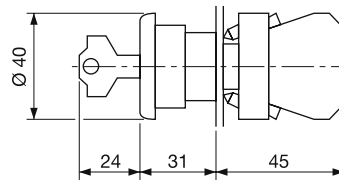
TYPE NO.	COLOUR
CCTTRSTWH	White Start
CCTTRSPBK	Black Stop
CCTTRONWH	White On
CCTTROFBK	Black Off



Black Button - Extended Height

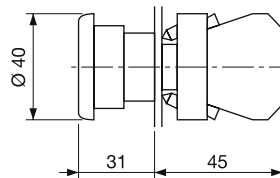
## 40mm E-stop Key Release

TYPE NO.	COLOUR
CCTTM41LB	Black
CCTTM41LR	Red



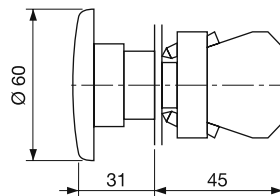
## 40mm E-stop Twist Release

TYPE NO.	COLOUR
CCTTM40LB	Black
CCTTM40LR	Red



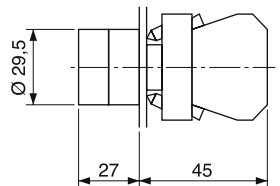
## 60mm E-stop Twist Release

TYPE NO.	COLOUR
CCTTM60LB	Black
CCTTM60LR	Red



## Selector Switch

- Black short lever, 2 and 3 position selector switch
- Maintain & spring return options

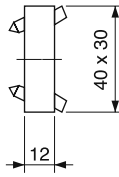


TYPE NO.	POSITIONS	STYLE
CCTTSS211	2	Maintained left & right
CCTTSS210	2	Return left
CCTTSS311	3	Maintained left, centre & right
CCTTSS300	3	Return to centre from left & right
CCTTSS301	3	Return to centre from left, maintained right
CCTTSS310	3	Return to centre from right, maintained left

# CONTROL PRODUCTS

## Mounting Plate

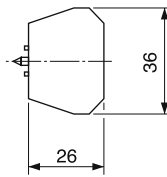
- Metal mounting plate for contact blocks
- Holds 1 or 2 NO or NC contact blocks



TYPE NO.	DESCRIPTION
CCTTP	Mounting plate

## Contact Block

- NO and NC contact blocks
- Screw fixed to mounting plate
- Stackable for 3 or more contact blocks per mounting plate



TYPE NO.	DESCRIPTION
CCTTC1R	Red NC
CCTTC0G	Green NO

## Dust Cap

- Clear Silicon protection cap for push buttons
- Other colours to order



TYPE NO.	DESCRIPTION
CCTTRDCL	Clear dust cap

## Keys for E-Stop Key Release

TYPE NO.	SLEEVE
CCTTKRD	Red
CCTTKBK	Black



## Button Surrounds

- Yellow engraved black emergency stop
- Black name plate with recessed label area



TYPE NO.	DESCRIPTION
CCTTBES	60mm diameter e-stop
CCTTBNP	Name plate blank

PCB  
TERMINAL  
BLOCKS

INTER-  
CONNECTION

FUSES &  
FUSE-  
HOLDERS

LEDs &  
INDICATORS

MINIATURE  
SWITCHES

LIMIT &  
SAFETY  
SWITCHES

CONTROL  
PRODUCTS

INTERFACE  
MODULES &  
SUPPORTS

RELAY  
BASES

ENCLOSURES

BATTERIES

TRANS-  
FORMERS



+44 (0)1638 716101  
info@camdenboss.com  
www.camdenboss.com

We operate a constant improvement policy,  
our products are subject to change without notice.

**CAMDENBOSS**  
ELECTRONICS & ENCLOSURES