

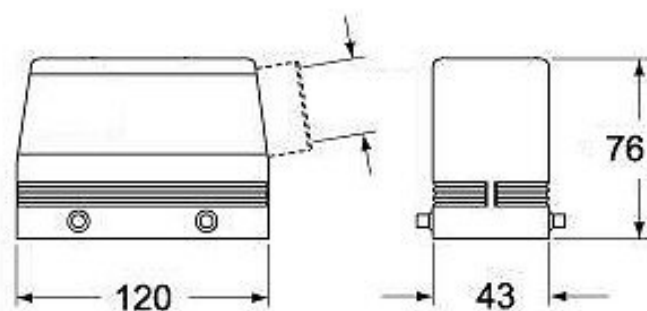
## Product Sheet

Part Number:

MAO 24.32



www.ilme.com



**Family** CH - CA and MH - MA enclosures

**Version** metal version

**Series** hoods for two levers

**Product type** with 4 pegs

**Type** side entry

**Execution** high construction

**Quality mark**  (type: 4/4X/12),  

**IP degree of protection** IP66 (EN 60529) and IP69K (DIN 40050 - 9) degree of protection.

**Cable entry** M 32

**Fixing centre distance** size "104.27"

**Material** metal

**Barcode EAN13** 8015747050678

The information and the dimensions contained are not binding and may be changed without prior notice.  
The drawing's dimensions are in mm.