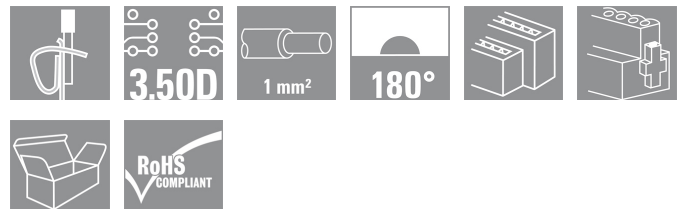


B2L/S2L 3.50 - 2-row series B2L 3.50/32/180F SN BK BX

Weidmüller Interface GmbH & Co. KG
Klingenbergstraße 16
D-32758 Detmold
Germany
Fon: +49 5231 14-0
Fax: +49 5231 14-292083
www.weidmueller.com



Component density redefined: the future standard for signal connection

Maximum connection density in the smallest of spaces - the 2-row B2L raises the bar higher for standard sensor cables up to 1 mm² and bridges the gap between insufficient space and more functions.

The result is a connecting solution for standard industrial cables with 1.75 pitch - 30% smaller than an equivalent solution with 2.5 pitch and with 140% the robustness of 3.5 pitch

Dimensions: double the connection density with 3.5 mm pitch size

Connection system: tried and tested maintenance-free Weidmüller tension clamp connection

Connection data / Performance:

- 0.20 - 1.0 mm² (IEC) / 28 - 18 AWG (UL)
- 80 V / 10 A (IEC) / 150 V / 10 A (UL)
- No. of poles: 4 to 36

The basic application advantages:

Efficient - maximum component density on the PCB

Suitable for industrial use - minimum dimensions, maximum robustness

Process-optimised - automatic configuration and reflow solders, rapid connection

User-friendly - patented release lever for the easy release of larger numbers of poles

Application-oriented: easy labelling and reliable coding despite compact dimensions

Miniaturisation is more than just a larger number of functions within a small space:

Every reduction in size decreases space requirements and the overall system costs less for the end customer.

Weidmüller fulfils a growing demand in the engineering and industrial automation sectors.

General ordering data

Order No.	1748300000
Type	B2L 3.50/32/180F SN BK BX
Version	PCB plug-in connector, female plug, 3.50 mm, No. of poles: 32, 180°, Tension clamp connection, Clamping range, rated connection, max.: 1 mm ² , Box
GTIN (EAN)	4032248198689
Qty.	20 pc(s).
Product data	IEC: 250 V / 10.3 A / 0.2 - 1 mm ² UL: 300 V / 10 A / AWG 28 - AWG 16
Packaging	Box

Creation date August 28, 2012 8:59:20 AM CEST

B2L/S2L 3.50 - 2-row series
B2L 3.50/32/180F SN BK BX

Weidmüller Interface GmbH & Co. KG
 Klingenbergstraße 16
 D-32758 Detmold
 Germany
 Fon: +49 5231 14-0
 Fax: +49 5231 14-292083
 www.weidmueller.com

Technical data**Dimensions**

Net weight	16.98 g
------------	---------

System parameters

Product family	B2L/S2L 3.50 - 2-row series	Conductor connection system	Tension clamp connection
Outgoing direction of conductor	180°	Pitch in mm (P)	3.5 mm
Pitch in inches (P)	0.138 inch	No. of poles	32
Number of rows	1	Stripping length	7 mm
L1 in mm	52.5 mm	L1 in inches	2.067 inch
Touch-safe protection acc. to DIN VDE 0470	IP 20	Touch-safe protection acc. to DIN VDE 517 106	Safe from finger touch

Material data

Insulating material	PBT	Colour	Black
Colour chart	Similar to RAL 9011	UL 94 flammability rating	V-0
Contact material	Copper alloy	Contact surface	tinned
Continuous operating temp., min.	-25 °C	Continuous operating temp., max.	100 °C


Connectable conductors

Clamping range, rated connection, min.	0.08 mm ²	Clamping range, rated connection, max.	1 mm ²
Wire connection cross section AWG, min.	AWG 28	Wire connection cross section AWG, max.	AWG 18
Solid, min. H05(07) V-U	0.2 mm ²	Solid, max. H05(07) V-U	1 mm ²
Flexible, min. H05(07) V-K	0.2 mm ²	Flexible, max. H05(07) V-K	1 mm ²
w. wire end ferrule, DIN 46228 pt 1, min.	0.13 mm ²	w. wire end ferrule, DIN 46228 pt 1, max.	0.34 mm ²
w. plastic collar ferrule, DIN 46228 pt 4, min.	0.13 mm ²	w. plastic collar ferrule, DIN 46228 pt 4, max.	0.34 mm ²

DIN IEC rating data

Rated current, min. no. of poles (Tu=20°C)	10.3 A	Rated current, max. no. of poles (Tu=20°C)	8.7 A
Rated current, number of poles (Tu=40°C), min	8.9 A	Rated current, number of poles (Tu=40°C), max.	7.4 A
Rated voltage for surge voltage class / pollution degree II/2	250 V	Rated voltage for surge voltage class / pollution degree III/2	160 V
Rated voltage for surge voltage class / pollution degree III/3	80 V	Rated impulse voltage for surge voltage class/ pollution degree II/2	2.5 kV
Rated impulse voltage for surge voltage class/ pollution degree III/2	2.5 kV	Rated impulse voltage for surge voltage class/ contamination degree III/3	2.5 kV
Short-time withstand current resistance	3 x 1s with 77 A		

CSA rating data

Institute (CSA)		Rated voltage (Use group B)	300 V
Rated current (use group B)	5 A	Wire cross-section, AWG, min.	AWG 28
Wire cross-section, AWG, max.	AWG 18		

B2L/S2L 3.50 - 2-row series
B2L 3.50/32/180F SN BK BX

Weidmüller Interface GmbH & Co. KG
 Klingenbergstraße 16
 D-32758 Detmold
 Germany
 Fon: +49 5231 14-0
 Fax: +49 5231 14-292083
 www.weidmueller.com

Technical data**UL 1059 rating data**

Institute (UR)



Rated voltage (use group B)

300 V

Rated current (use group B) 10 A

Rated voltage (use group C) 50 V

Rated current (use group C) 10 A

Wire cross-section, AWG, min. AWG 28

Wire cross-section, AWG, max. AWG 16

Classifications

UNSPSC 30-21-18-10

eClass 4.1

27-26-07-01

eClass 5.1 27-26-07-01

eClass 6.0

27-26-07-04

eClass 7.0 27-44-04-02

Notes

Notes

- Other colours on request
- Gold-plated contact surfaces on request
- Rated current related to rated cross-section and min. No. of poles.
- Wire end ferrule with plastic collar to DIN 46228/4
- Wire end ferrule without plastic collar to DIN 46228/1
- Specifications of diagram P = pitch
- We recommend crimp shape A for wire-end ferrules with crimping tools PZ 1,5 (order no. 9005990000) or PZ 6/5 (order no. 9011460000) for the larger wire cross-sections.
- Rated data refer only to the component itself. Clearance and creepage distances to other components are to be designed in accordance with the relevant application standards.

Approvals

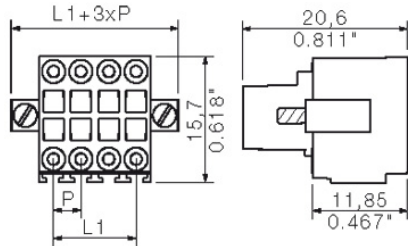
Approvals



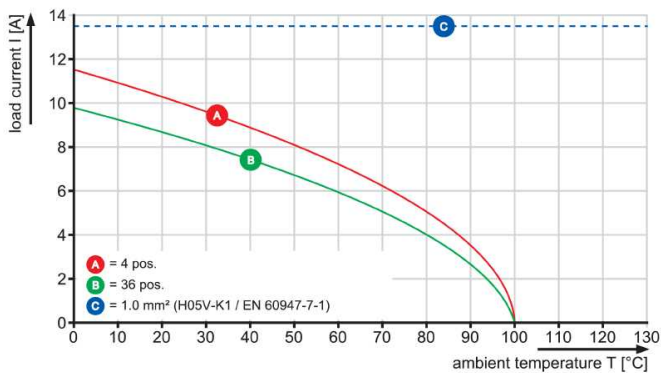
B2L/S2L 3.50 - 2-row series
B2L 3.50/32/180F SN BK BX

Weidmüller Interface GmbH & Co. KG
 Klingenbergstraße 16
 D-32758 Detmold
 Germany
 Fon: +49 5231 14-0
 Fax: +49 5231 14-292083
 www.weidmueller.com

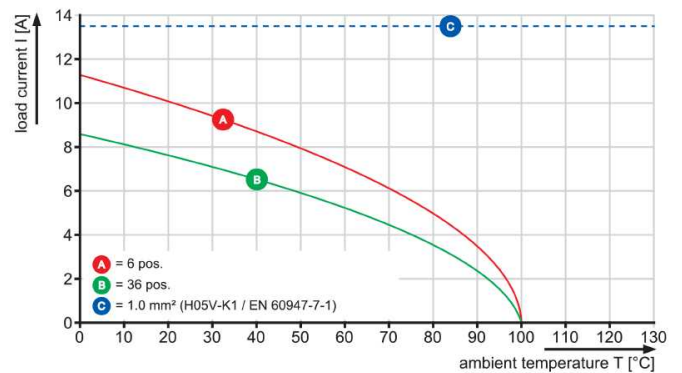
Drawings



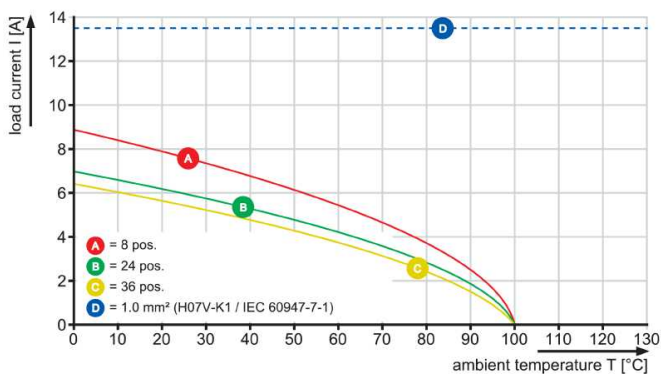
B2L 3.50/./180 - S2L-SMT 3.50/./90



B2L 3.50/./180 - S2L 3.50/./90



B2L 3.50/./180 - S2LD-THR 3.50/./90



**B2L/S2L 3.50 - 2-row series
B2L 3.50/32/180F SN BK BX**

Weidmüller Interface GmbH & Co. KG
Klingenbergstraße 16
D-32758 Detmold
Germany
Fon: +49 5231 14-0
Fax: +49 5231 14-292083
www.weidmueller.com

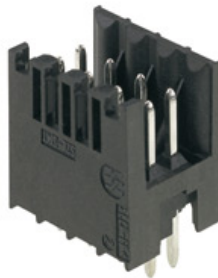
Mating connector (conditionally pluggable)
S2L-SMT 3.50/90G Box


High-temperature-resistant, straight, 2-tier male connector for all common soldering methods. Optimised for automatic assembly. Packed in box or tape. 3.2 mm solder pin suitable for reflow and wave soldering. These male connectors can be labelled and coded.

- 50 V (IEC) / 150 V (UL)
- 10 A (IEC) / 10 A (UL)

General ordering data

Order No.	Type	Version	GTIN (EAN)	Qty.	Product data	Packaging
1794340000	S2L-SMT 3.50/32/90G 3.2SN BK BX	PCB plug-in connector, male header, closed side, Reflow solder connection, 3.50 mm, No. of poles: 32, 90°, Solder pin length (l): 3.2 mm, tinned, Black, Box	4032248231515	20 pc(s).	IEC: 160 V / 10 A UL: 150 V / 10 A	Box

S2L-SMT 3.50/180 Box


High-temperature-resistant, straight, 2-tier male connector for all common soldering methods. Optimized for automatic assembly. Packed in box or tape. 3.2 mm solder pin suitable for reflow and wave soldering. The pin headers can be labelled and coded. (Packaging in tape on request)

- 50 V (IEC) / 150 V (UL)
- 10 A (IEC) / 10 A (UL)

General ordering data

Order No.	Type	Version	GTIN (EAN)	Qty.	Product data	Packaging
1794820000	S2L-SMT 3.50/32/180 3.5SN BK BX	PCB plug-in connector, male header, open side, Reflow solder connection, 3.50 mm, No. of poles: 32, 180°, Solder pin length (l): 3.5 mm, tinned, Black, Box	4032248232000	20 pc(s).	IEC: 160 V / 10 A UL: 150 V / 10 A	Box

**B2L/S2L 3.50 - 2-row series
B2L 3.50/32/180F SN BK BX**

Weidmüller Interface GmbH & Co. KG
Klingenbergstraße 16
D-32758 Detmold
Germany
Fon: +49 5231 14-0
Fax: +49 5231 14-292083
www.weidmueller.com

Mating connector (conditionally pluggable)
S2L 3.50/180G


Straight two-tier pin header available as closed-sided or with flange (open-sided pin headers on request). Pin headers with 3.5mm pins are designed for wave soldering and are packaged in a box. They can be screwed on to the PCB. The pin headers provide space for labelling and can be coded.

- 80 V (IEC) / 150 V (UL)
- 9 A (IEC / 8 A (UL)

General ordering data

Order No.	Type	Version	GTIN (EAN)	Qty.	Product data	Packaging
1729080000	S2L 3.50/32/180G 3.5SN BK BX	PCB plug-in connector, male header, closed side, Solder connection, 3.50 mm, No. of poles: 32, 180°, Solder pin length (l): 3.5 mm, tinned, Black, Box	4032248040513	20 pc(s).	IEC: 250 V / 10 A UL: 150 V / 10 A	Box
1728920000	S2L 3.50/32/180G 3.5SN OR BX	PCB plug-in connector, male header, closed side, Solder connection, 3.50 mm, No. of poles: 32, 180°, Solder pin length (l): 3.5 mm, tinned, Orange, Box	4032248040353	20 pc(s).	IEC: 250 V / 10 A UL: 150 V / 10 A	Box

S2L-SMT 3.50/180G Box


High-temperature-resistant, straight, 2-tier male connector for all common soldering methods. Optimised for automatic assembly. Packed in box or tape. 3.2 mm solder pin suitable for reflow and wave soldering. These male connectors can be labelled and coded.

- 50 V (IEC) / 150 V (UL)
- 10 A (IEC) / 10 A (UL)

General ordering data

Order No.	Type	Version	GTIN (EAN)	Qty.	Product data	Packaging
1794660000	S2L-SMT 3.50/32/180G 3.5SN BK BX	PCB plug-in connector, male header, closed side, Reflow solder connection, 3.50 mm, No. of poles: 32, 180°, Solder pin length (l): 3.5 mm, tinned, Black, Box	4032248231843	20 pc(s).	IEC: 160 V / 10 A UL: 150 V / 10 A	Box

**B2L/S2L 3.50 - 2-row series
B2L 3.50/32/180F SN BK BX**

Weidmüller Interface GmbH & Co. KG
Klingenbergstraße 16
D-32758 Detmold
Germany
Fon: +49 5231 14-0
Fax: +49 5231 14-292083
www.weidmueller.com

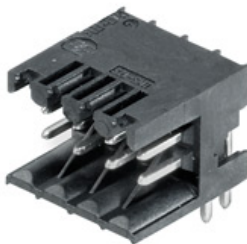
Mating connector (conditionally pluggable)
S2L 3.50/90G


Angled, two-tier pin header available as closed-sided or with flange (open-sided pin headers on request). Pin headers with 3.5mm pins are designed for wave soldering and are packaged in a box. They can be screwed on to the PCB. The pin headers provide space for labelling and can be coded.

- 80 V (IEC) / 150 V (UL)
- 9 A (IEC) / 8 A (UL)

General ordering data

Order No.	Type	Version	GTIN (EAN)	Qty.	Product data	Packaging
1727960000	S2L 3.50/32/90G 3.5SN OR BX	PCB plug-in connector, male header, closed side, Solder connection, 3.50 mm, No. of poles: 32, 90°, Solder pin length (l): 3.5 mm, tinned, Orange, Box	4032248039456	20 pc(s).	IEC: 250 V / 10 A UL: 150 V / 10 A	Box
1728120000	S2L 3.50/32/90G 3.5SN BK BX	PCB plug-in connector, male header, closed side, Solder connection, 3.50 mm, No. of poles: 32, 90°, Solder pin length (l): 3.5 mm, tinned, Black, Box	4032248039616	20 pc(s).	IEC: 250 V / 10 A UL: 150 V / 10 A	Box

S2L-SMT 3.50/90 BOX


High-temperature-resistant, straight, 2-tier pin header for all common soldering methods. Optimized for automatic assembly. Packed in box or tape. 3.2 mm solder pin suitable for reflow and wave soldering. These pin headers can be labelled and coded. (Packaging in tape on request)

- 50 V (IEC) / 150 V (UL)
- 10 A (IEC) / 10 A (UL)

General ordering data

Order No.	Type	Version	GTIN (EAN)	Qty.	Product data	Packaging
1794500000	S2L-SMT 3.50/32/90 3.2SN BK BX	PCB plug-in connector, male header, open side, Reflow solder connection, 3.50 mm, No. of poles: 32, 90°, Solder pin length (l): 3.2 mm, tinned, Black, Box	4032248231683	20 pc(s).	IEC: 160 V / 10 A UL: 150 V / 10 A	Box

**B2L/S2L 3.50 - 2-row series
B2L 3.50/32/180F SN BK BX**

Weidmüller Interface GmbH & Co. KG
Klingenbergstraße 16
D-32758 Detmold
Germany
Fon: +49 5231 14-0
Fax: +49 5231 14-292083
www.weidmueller.com

Mating connector (fully pluggable)
S2L-SMT 3.50/180LF Box


High-temperature-resistant, straight, 2-tier male connector for all common soldering methods. Optimised for automatic assembly. Packed in box or tape. 3.2 mm solder pin suitable for reflow and wave soldering. These male connectors can be labelled and coded.

- 50 V (IEC) / 150 V (UL)
- 10 A (IEC) / 10 A (UL)

General ordering data

Order No.	Type	Version	GTIN (EAN)	Qty.	Product data	Packaging
1795330000	S2L-SMT 3.50/32/180LF 3.5SN BK BX	PCB plug-in connector, male header, Solder flange, Reflow solder connection, 3.50 mm, No. of poles: 32, 180°, Solder pin length (l): 3.5 mm, tinned, Black, Box	4032248232840	20 pc(s).	IEC: 160 V / 10 A UL: 150 V / 10 A	Box

S2LD-THR 3.50/90LF

The new benchmark for component density: the virtual 0.875mm pitch - for 1mm² I/O connections

The only 4-row double level male connectors for standard IP20 sensor interfaces with 3.5 pitch

The S2L in a double pack - a standard has surpassed itself:

- Each 3.5mm wide, 4 I/O contacts for 1mm² connection cross-section
- Force-fit enclosure geometry guarantees maximum stability
- Solder flange eliminates the need for a screw fastening

Less is more - basic advantages for your applications:

- 75% space savings on the circuit board
- Solder flange reduces process costs
- Less mechanical load on the soldering points
- More space for displays in the front panel, for example

A "small" contribution to greater competitiveness: additional features in the same installation space or a more compact device with the same range of functions.

General ordering data

Order No.	Type	Version	GTIN (EAN)	Qty.	Product data	Packaging
1028440000	S2LD-THR 3.50/32/90LF 3.2SN BK BX	PCB plug-in connector, male header, open side, Reflow solder connection, 3.50 mm, No. of poles: 32, 90°	4032248756933	20 pc(s).	IEC: 200 V / 8 A UL: 150 V / 7 A	Box

**B2L/S2L 3.50 - 2-row series
B2L 3.50/32/180F SN BK BX**

Weidmüller Interface GmbH & Co. KG
Klingenbergstraße 16
D-32758 Detmold
Germany
Fon: +49 5231 14-0
Fax: +49 5231 14-292083
www.weidmueller.com

Mating connector (fully pluggable)

Solder pin length (l): 3.2
mm, tinned, Black, Box

S2L 3.50/90F


Angled, two-tier pin header available as closed-sided or with flange (open-sided pin headers on request). Pin headers with 3.5mm pins are designed for wave soldering and are packaged in a box. They can be screwed on to the PCB. The pin headers provide space for labelling and can be coded.

- 80 V (IEC) / 150 V (UL)
- 9 A (IEC / 8 A (UL)

General ordering data

Order No.	Type	Version	GTIN (EAN)	Qty.	Product data	Packaging
1728760000	S2L 3.50/32/90F 3.5SN BK BX	PCB plug-in connector, male header, Flange, Solder connection, 3.50 mm, No. of poles: 32, 90°, Solder pin length (l): 3.5 mm, tinned, Black, Box	4032248040223	20 pc(s).	IEC: 250 V / 10 A UL: 150 V / 10 A	Box
1728600000	S2L 3.50/32/90F 3.5SN OR BX	PCB plug-in connector, male header, Flange, Solder connection, 3.50 mm, No. of poles: 32, 90°, Solder pin length (l): 3.5 mm, tinned, Orange, Box	4032248040063	20 pc(s).	IEC: 250 V / 10 A UL: 150 V / 10 A	Box

S2L 3.50/180F


Straight two-tier pin header available as closed-sided or with flange (open-sided pin headers on request). Pin headers with 3.5mm pins are designed for wave soldering and are packaged in a box. They can be screwed on to the PCB. The pin headers provide space for labelling and can be coded.

- 80 V (IEC) / 150 V (UL)
- 9 A (IEC / 8 A (UL)

General ordering data

Order No.	Type	Version	GTIN (EAN)	Qty.	Product data	Packaging
1729560000	S2L 3.50/32/180F 3.5SN OR BX	PCB plug-in connector, male header, Flange, Solder connection, 3.50 mm, No. of poles: 32, 180°, Solder pin length (l): 3.5 mm, tinned, Orange, Box	4032248040964	20 pc(s).	IEC: 250 V / 10 A UL: 150 V / 10 A	Box
1729720000	S2L 3.50/32/180F 3.5SN BK BX	PCB plug-in connector, male header, Flange, Solder connection, 3.50 mm, No.	4032248041121	20 pc(s).	IEC: 250 V / 10 A UL: 150 V / 10 A	Box

**B2L/S2L 3.50 - 2-row series
B2L 3.50/32/180F SN BK BX**

Weidmüller Interface GmbH & Co. KG
Klingenbergstraße 16
D-32758 Detmold
Germany
Fon: +49 5231 14-0
Fax: +49 5231 14-292083
www.weidmueller.com

Mating connector (fully pluggable)

of poles: 32, 180°, Solder
pin length (l): 3.5 mm,
tinned, Black, Box

S2L-SMT 3.50/90LF Box



High-temperature-resistant, straight, 2-tier male connector for all common soldering methods. Optimised for automatic assembly. Packed in box or tape. 3.2 mm solder pin suitable for reflow and wave soldering. These male connectors can be labelled and coded.

- 50 V (IEC) / 150 V (UL)
- 10 A (IEC) / 10 A (UL)

General ordering data

Order No.	Type	Version	GTIN (EAN)	Qty.	Product data	Packaging
1794990000	S2L-SMT 3.50/32/90LF 3.2SN BK BX	PCB plug-in connector, male header, Solder flange, Reflow solder connection, 3.50 mm, No. of poles: 32, 90°, Solder pin length (l): 3.2 mm, tinned, Black, Box	4032248232444	20 pc(s).	IEC: 160 V / 10 A UL: 150 V / 10 A	Box

