

Stamped contacts crimp male contact for wire gauge 28 - 24



Part No. ZN 01 010 0130 (2)

Series Contacts

Subseries Contact Stamped contacts

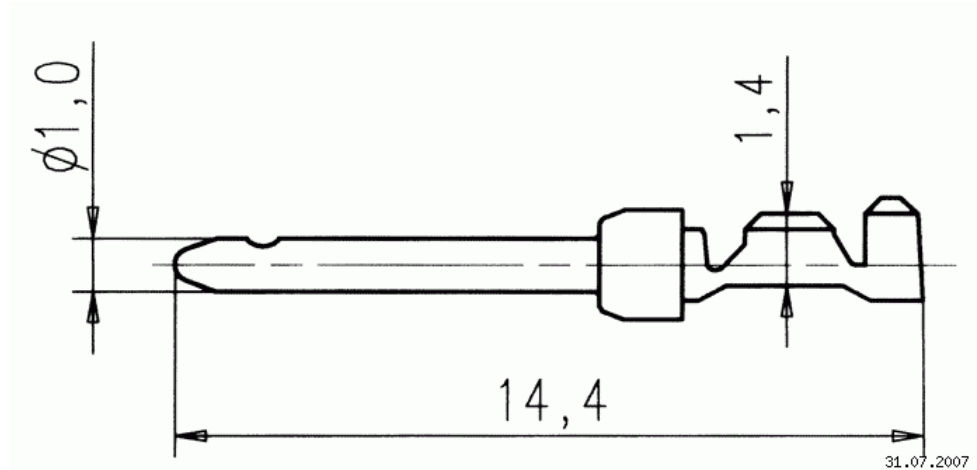
COMMON CHARACTERISTICS		
Wire gauge from		0,09
Wire gauge to		0,25
Wire gauge (AWG) from		28
Wire gauge (AWG) to		24
Packaging / supplied as		Contacts on reel for hand crimping tool
No. of pieces		350
Sex of Contact		Pin
Type of contact		Stamped/rolled crimp contact
ELECTRICAL CHARACTERISTICS		
Contact resistance	DIN EN 60512-2-1, Test 2a / IEC 60512-2-1, Test 2a	< 5 m

Stamped contacts crimp male contact for wire gauge 28 - 24

Part No. ZN 01 010 0130 (2)

Series Contacts

Subseries Contact Stamped contacts



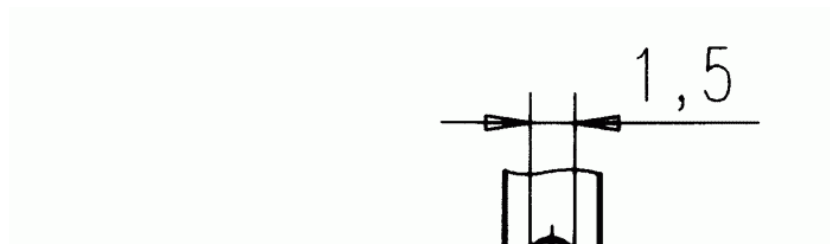
Maßzeichnung Dimensions in mm (Inch)

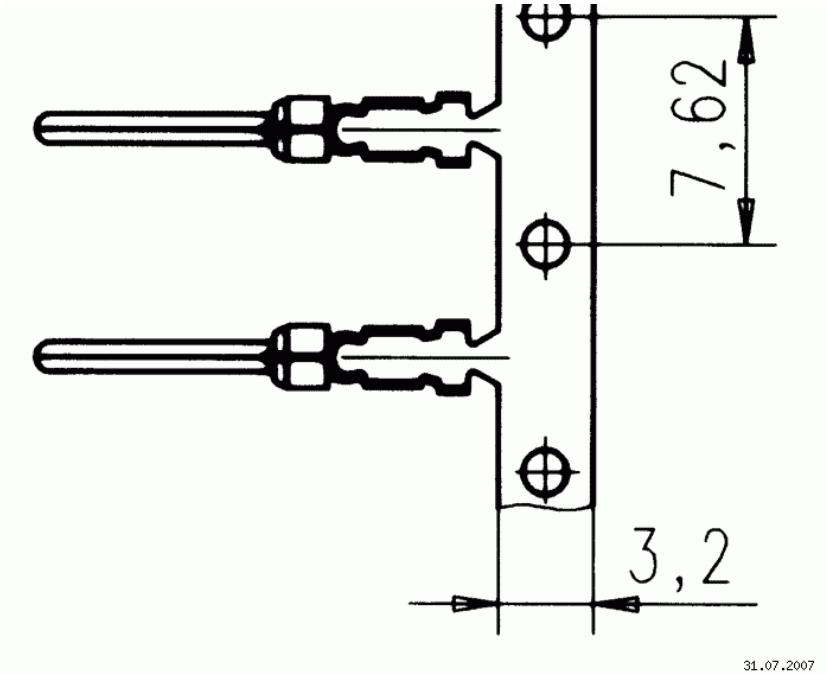
Stamped contacts crimp male contact for wire gauge 28 - 24

Part No. ZN 01 010 0130 (2)

Series Contacts

Subseries Contact Stamped contacts





Panel cutout

31.07.2007