

Customer Information Sheet

DRAWING No.: S9001-XXR

SHEET 2 OF 2

IF IN DOUBT - ASK

©

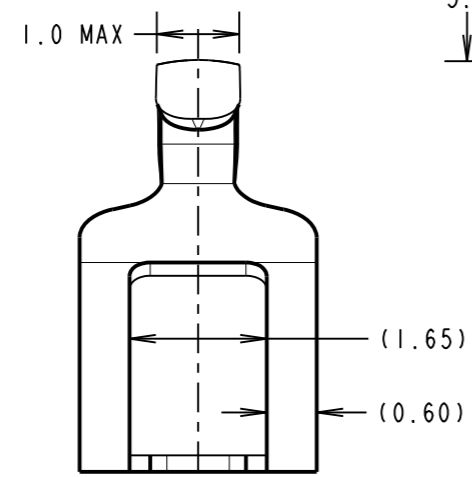
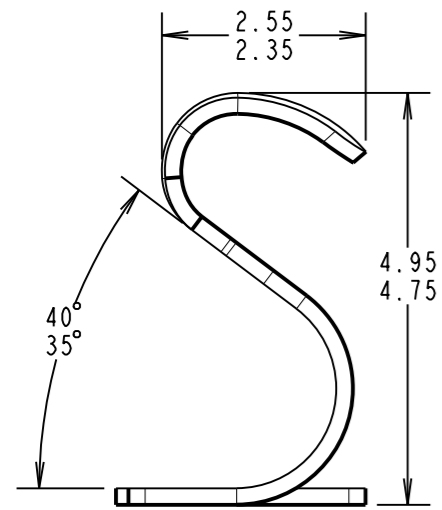
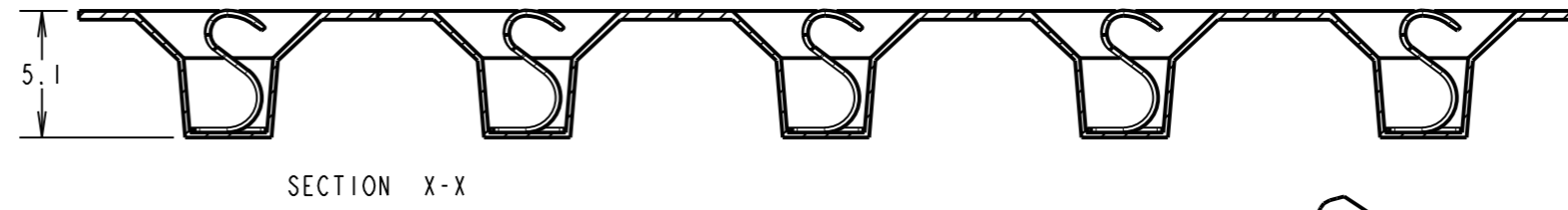
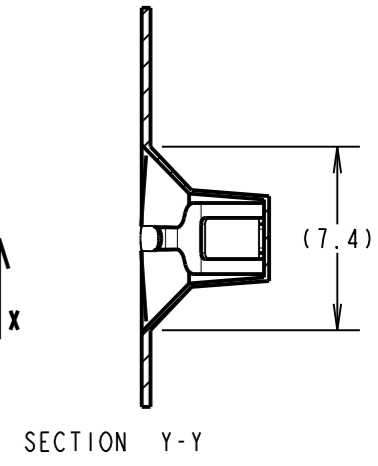
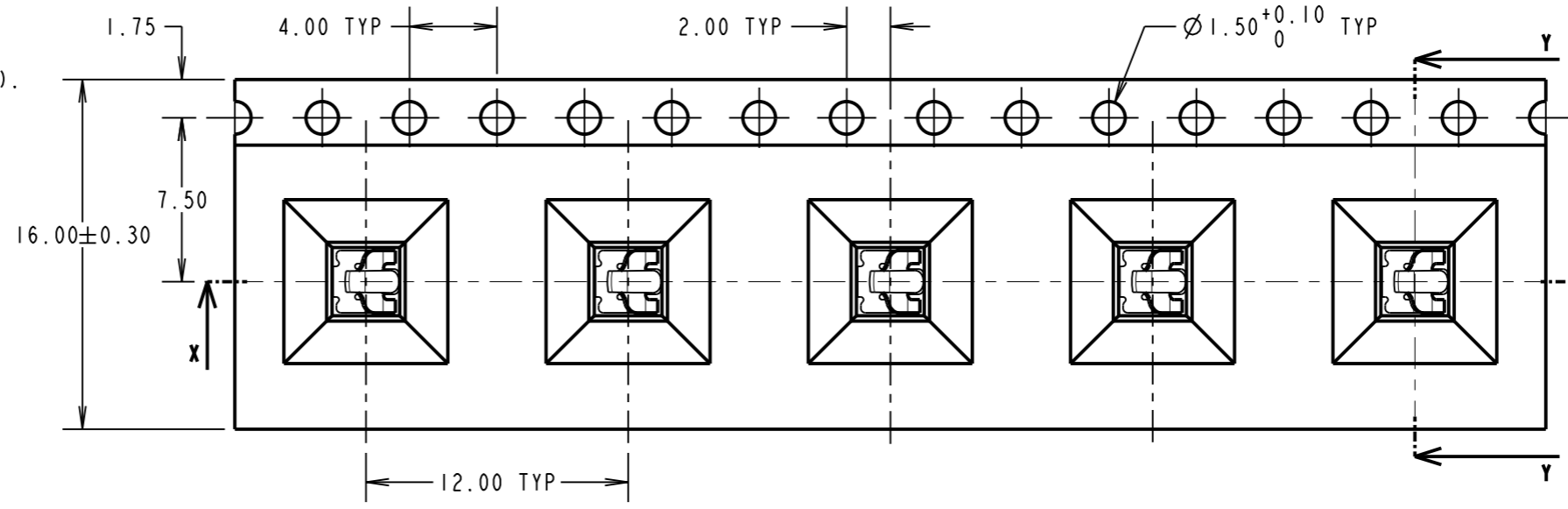
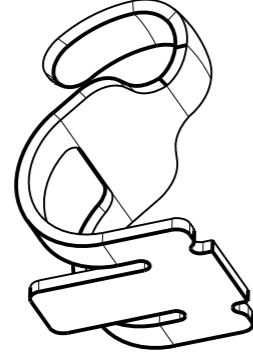
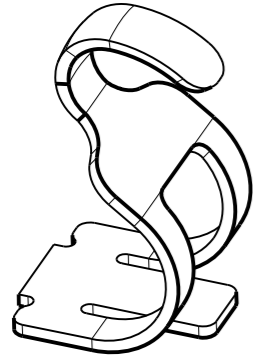
NOT TO SCALE

THIRD ANGLE PROJECTION

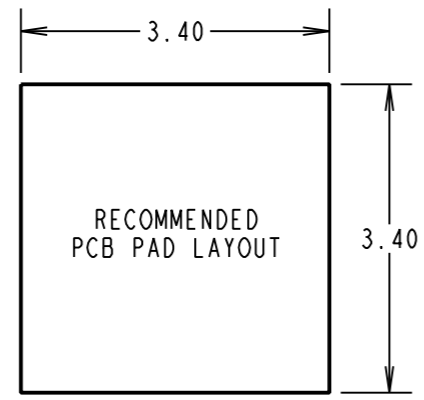
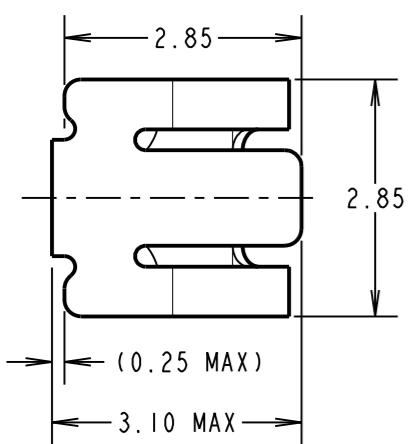
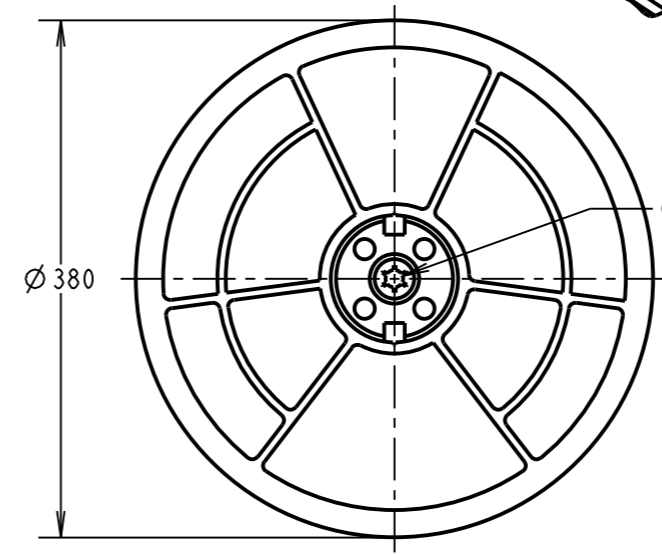
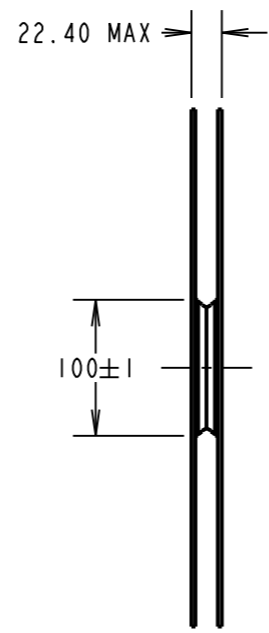
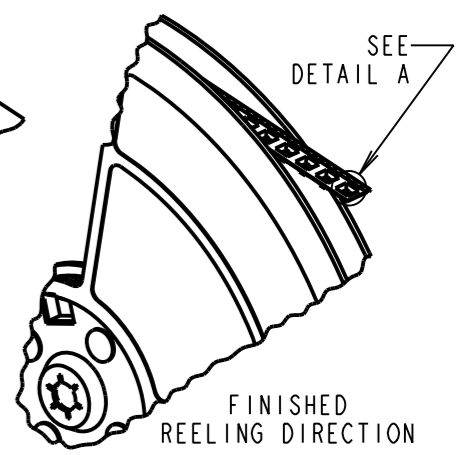
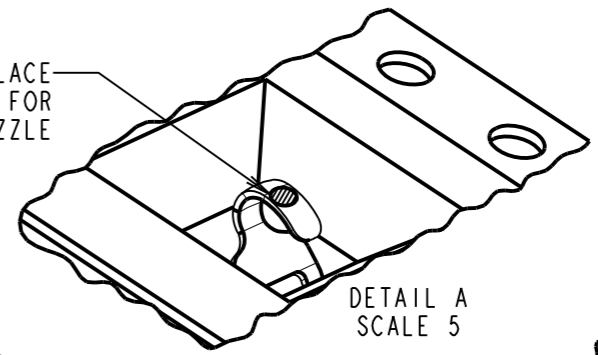
ALL DIMENSIONS IN mm

NOTES:

1. SPRING FORCE WHEN DEPRESSED TO 4.5mm = TBA.
2. THIS PRODUCT IS TAPED AND REELED IN ACCORDANCE WITH EIA-481 (ELECTRONICS INDUSTRIES ASSOCIATION).
3. CONTACT SUITABLE FOR PICK AND PLACEMENT.
4. QUANTITY OF COMPONENTS PER REEL = 1,300.



PICK AND PLACE AREA SUITABLE FOR Ø0.8 MAX NOZZLE



ORDER CODE:
S9001-XXR
FINISH:
05 - 0.10-0.20µ GOLD
46 - 0.10-0.20µ 100% TIN

SF	D	07.02.12	11646
NAME	ISS.	DATE	C/NOTE
APPROVED:		S.FLOWER	
CHECKED:		M.PLESTED	
DRAWN:		S.FLOWER	
CUSTOMER REF.:			
ASSEMBLY DRG:			

HARWIN
www.harwin.com
technical@harwin.com

THIS DRAWING AND ANY INFORMATION OR DESCRIPTIVE MATTER SET OUT HEREON ARE CONFIDENTIAL AND COPYRIGHT PROPERTY OF THE HARWIN GROUP AND MUST NOT BE DISCLOSED, LOANED, COPIED OR USED FOR MANUFACTURING, TENDERING OR FOR ANY OTHER PURPOSE WITHOUT THEIR WRITTEN PERMISSION.

TOLERANCES
X. = ±1mm
X.X = ±0.25mm
X.XX = ±0.10mm
X.XXX = ±0.01mm
ANGLES = ±5°
UNLESS STATED

MATERIAL:
STAINLESS STEEL
FINISH: SEE ORDER CODE
S/AREA: mm²

TITLE: SMT PRESSURE CONTACT IN TAPE AND REEL
DRAWING NUMBER: S9001-XXR
SHT 2 OF 2