

Standard roller is hardened oil-impregnated sintered iron
Bold face type numbers indicate the most commonly used lever arms.

Cast Zinc Lever Arms

Length of Arm (A)	Roller																	
	Standard 3/4" Dia. (B) 1/4" Wide (C)		Standard 3/4" Dia. (B) 5/8" Wide (C)		Standard 5/8" Dia. (B) 1/4" Wide (C)		Standard 5/8" Dia. (B) 5/8" Wide (C)		Nylon 3/4" Dia. (B) 1/4" Wide (C)		Nylon 5/8" Dia. (B) 1/4" Wide (C)		Nylon 5/8" Dia. (B) 5/8" Wide (C)		Nylon 1" Dia. (B) 5/8" Wide (C)			
	Type	Price	Type	Price	Type	Price	Type	Price	Type	Price	Type	Price	Type	Price	Type	Price	Type	Price
7/8"	BA11	\$14.30	BA12	\$23.70	AA1	\$23.70	AA2	\$23.70	BA18	\$14.30	AA8	\$23.70	AA17	\$23.70	BA13	\$23.70	EA13	\$23.70
1 1/2"	MA11	14.30	MA12	23.70	MA1	14.30	MA2	23.70	MA18	14.30	MA8	14.30	MA17	23.70	MA13	23.70	CA13	23.70
2"	CA11	23.70	CA12	23.70	CA1	23.70	CA2	23.70	CA18	23.70	CA8	23.70	CA17	23.70	CA13	23.70	DA13	23.70
2 1/2"	DA11	23.70	DA12	23.70	DA1	23.70	DA2	23.70	DA18	23.70	DA8	23.70	DA17	23.70	DA13	23.70	EA13	23.70
3"	EA11	23.70	EA12	23.70	EA1	23.70	EA2	23.70	EA18	23.70	EA8	23.70	EA17	23.70	EA13	23.70	EA13	23.70
Length of Arm (A)	Nylon 1" Dia. (B) 1/4" Wide (C)		Ball Bearing 1 1/16" Dia. (B) 1/4" Wide (C)		Standard 3/4" Dia. (B) 1/4" Wide (C) Roller on Opposite Side to Standard		Standard 5/8" Dia. (B) 1/4" Wide (C) Roller on Opposite Side to Standard		Standard 5/8" Dia. (B) 5/8" Wide (C) Roller on Opposite Side to Standard		Without Roller		Standard 3/4" Dia. (B) 1/4" Wide (C) (Countersunk Roller Pin)		Cable Operated With Eyebolt (3/8" I.D.) Instead of Roller			
	Type	Price	Type	Price	Type	Price	Type	Price	Type	Price	Type	Price	Type	Price	Type	Price		
7/8"	BA4	\$33.30	BA9	\$33.30	BA15	\$14.30	BA5	\$23.70	BA6	\$23.70	AA0	\$23.70	MA31	\$14.30	MA22	\$23.70		
1 1/2"	MA4	33.30	MA9	33.30	MA15	14.30	MA5	14.30	MA6	23.70	BA0	23.70	MA0	23.70	CA31	23.70	EA22	23.70
2"	CA4	33.30	CA9	33.30	CA15	23.70	CA5	23.70	CA6	23.70	CA0	23.70	CA0	23.70	DA31	23.70	EA22	23.70
2 1/2"	DA4	33.30	DA9	33.30	DA15	23.70	DA5	23.70	DA6	23.70	DA0	23.70	DA0	23.70	EA31	23.70	EA22	23.70
3"	EA4	33.30	EA9	33.30	EA15	23.70	EA5	23.70	EA6	23.70	EA0	23.70	EA0	23.70	EA31	23.70	EA22	23.70



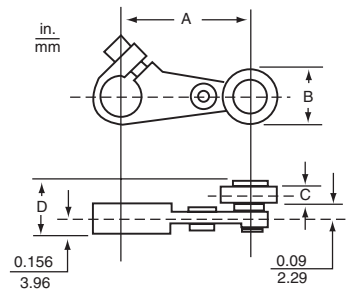
Cast Lever Arm

Flat Steel Lever Arms

Length of Arm (A)	Roller									
	Standard 5/8" Dia. (B) 1/4" Wide (C)		Standard 5/8" Dia. (B) 5/8" Wide (C)		Nylon 3/4" Dia. (B) 1/4" Wide (C)		Nylon 1" Dia. (B) 1/4" Wide (C)		None	
	Type	Price	Type	Price	Type	Price	Type	Price	Type	Price
7/8"	AA1S	\$23.70	AA2S	\$23.70	MA18S	\$14.30	BA4S	\$33.30	AA0S	\$23.70
1 1/2"	BA1S	14.30	BA2S	23.70	CA4S	33.30	CA0S	23.70	BA0S	23.70
2"	CA1S	23.70	CA2S	23.70	DA4S	33.30	DA0S	23.70	CA0S	23.70
2 1/2"	DA1S	23.70	DA2S	23.70	EA4S	33.30	EA0S	23.70	DA0S	23.70
3"	EA1S	23.70	EA2S	23.70	EA4S	33.30	EA0S	23.70	EA0S	23.70



Flat Steel Lever Arm



Cast Zinc Lever Arm Dimensions

A = Length of Lever Arm
B = Roller Diameter
C = Roller Width
D = C + 5/16"

See price tables for A, B and C dimensions.
Approximate shipping weights range from 1/8 lb. to 1/4 lb.

90° Forked Cast Zinc Lever Arms

Roller Position	Standard 3/4" Dia. (B) 1/4" Wide (C) Rollers		Standard 5/8" Dia. (B) 1/4" Wide (C) Rollers		Nylon 3/4" Dia. (B) 1/4" Wide (C) Rollers		Nylon 3/4" Dia. (B) 1" Wide (C) Rollers		Ball Bearing 1 1/16" Dia. (B) 1/4" Wide (C) Rollers	
	Type	Price	Type	Price	Type	Price	Type	Price	Type	Price
	Rollers on Same Side	LA4		LA1		LA16		LA10	\$23.70	LA7
R.H. Roller on Opp. Side	LA5		LA2		LA17		LA11	23.70	LA8	33.30
L.H. Roller on Opp. Side	LA6		LA3		LA18		LA12	23.70	LA9	33.30



90° Forked Arm 1 1/2" Length

One-Way Cast Zinc Roller Lever Arm

Length of Arm	1 1/4" Dia. (B) 1/4" Wide (C) Roller			
	Cast Arm		Flat Steel Arm	
	Type	Price	Type	Price
1 3/8"	BA3	\$42.80	BA3S	\$42.80
1 1/2"	MA3	42.80	CA3S	42.80
2"	CA3	42.80	DA3S	42.80
2 1/2"	DA3	42.80	EA3S	42.80
3"	EA3	42.80		



One-Way Roller Lever Arm

Offset Type Cast Zinc Lever Arms

Length of Arm	Std. Roller		Type	Price
	Dia. (B)	Width (C)		
2" Length 1/16" Offset	5/8	1/4	KA1	\$23.70
	5/8	5/8	KA2	23.70
	3/4	1/4	KA11	23.70
	3/4	5/8	KA12	23.70
2 1/2" Length 1/16" Offset	1 1/16	1/4	KA9	33.30
	Nylon			
1 1/2" Length 1/8" Offset	3/4	1/4	KA18	23.70
	3/4	1	KA21	23.70
	Std. Roller			
	3/4	1/4	KB11	\$23.70
	3/4	KB15	23.70	



Offset Lever Arm 2" Length 1/16" Offset

One-Way Lever Arms

Length of Arm	Roller						Rod Type	
	Standard 3/4" Dia. (B) 1/4" Wide (C)		Nylon 3/4" Dia. (B) 1/4" Wide (C)		Ball Bearing 1 1/16" Dia. (B) 1/4" Wide (C)		Type	Price
	Type	Price	Type	Price	Type	Price		
1 1/2"	RA11	\$77.00	RA18	\$77.00	RA9	\$95.00
5"	FA2	\$48.00

▲ Recommended in place of Types BA7, CA7, DA7, EA7 and MA7 lever arms with steel rollers. If necessary, the latter arms can be furnished at \$24.30 each.
■ Roller inside.

For additional information, reference Catalog #9006CT0101.