

CM3822R151R-10

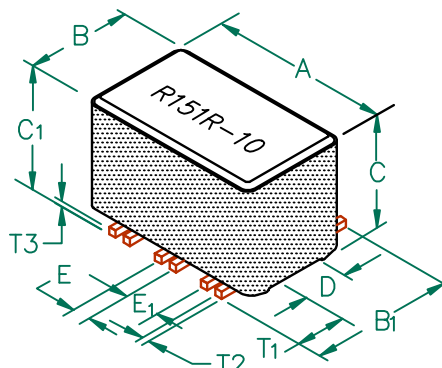


PHYSICAL DIMENSIONS:

A	9.78 [.385]	± 0.15 [.006]
B	5.72 [.225]	± 0.10 [.004]
B ₁	6.73 [.265]	MAX
C	7.62 [.300]	± 0.13 [.005]
C ₁	8.40 [.330]	MAX.
D	2.41 [.095]	± 0.08 [.003]
E	0.89 [.035]	± 0.13 [.005]
E ₁	1.91 [.075]	± 0.13 [.005]

WIRE:

T ₁	1.91 [.075]	± 0.25 [.010]
T ₂	0.38 [.015]	TYP.
T ₃	0.38 [.015]	TYP.



ELECTRICAL CHARACTERISTICS:

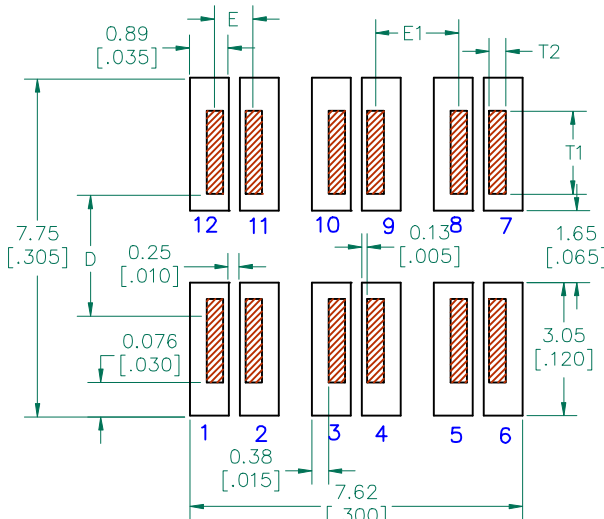
Z @ 100MHz (Ω)	DCR (Ω)	Rated Current	Rated Voltage (VDC)
Nominal	150		
Minimum	120		
Maximum	-	0.02	5,000 mA
			30

NOTES: UNLESS OTHERWISE SPECIFIED

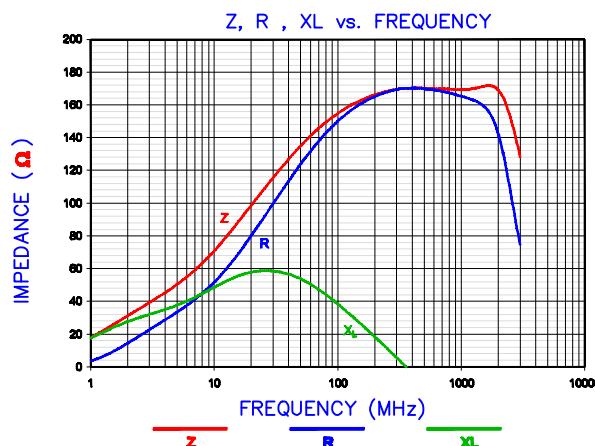
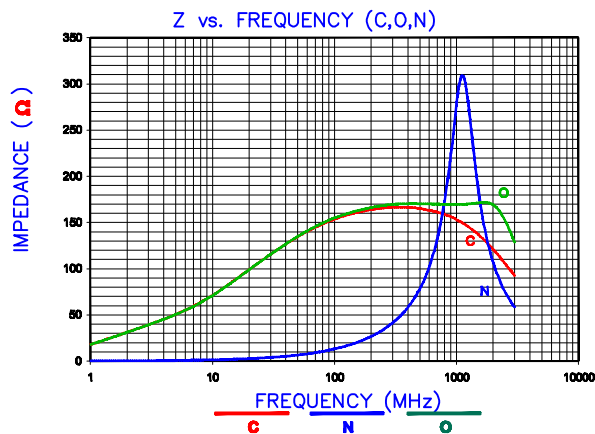
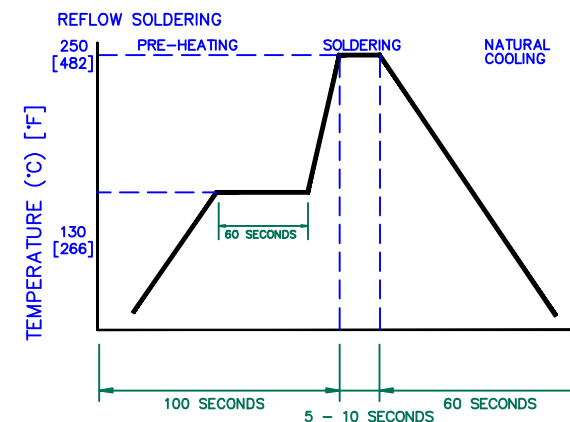
1. TAPED AND REELED per CURRENT EIA SPECIFICATIONS 13" REELS, 600 PCS per REEL.
2. COMPONENTS SHOULD BE ADEQUATELY PREHEATED BEFORE SOLDERING.
3. REF. CARRIER TAPE SPEC. # CART3822-1P.
4. TERMINATION FINISH IS 100% TIN.
5. THIS PART HAS NO PIN POLARITY.
6. OPERATION TEMPERATURE (INCLUDING SELF-HEATING): -40 ~ +125°C.

UNCONTROLLED DOCUMENT

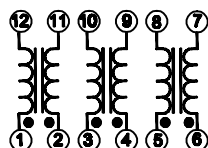
LAND PATTERNS FOR REFLOW SOLDERING



RECOMMENDED SOLDERING CONDITIONS

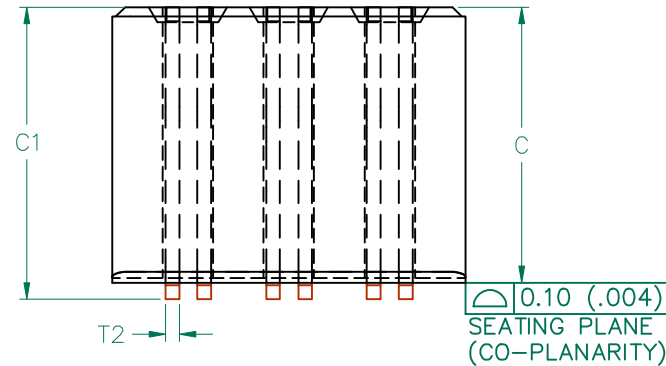
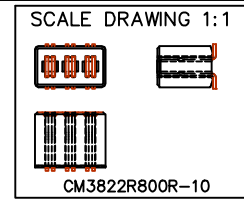
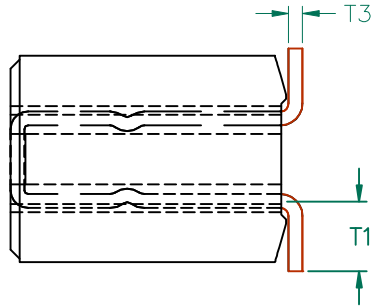
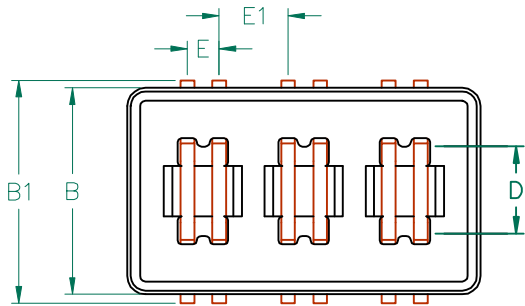


EQUIVALENT CIRCUIT NO POLARITY



DIMENSIONS ARE IN mm (INCHES).

This print is the property of Laird Tech. and is loaned in confidence subject to return upon request and with the understanding that no copies shall be made without the written consent of Laird Tech. All rights to design or invention are reserved.			Laird TECHNOLOGIES			
E	ADD RATED VOLTAGE AND NOTE 6	08/30/12	QIU	REV	PART TYPE: ASSEMBLY	DRAWN BY: JRK
D	UPDATE COMPANY LOGO ADD EQUIVALENT CIRCUIT	01/30/09	JRK	PROJECT/PART NUMBER:	CM3822R151R-10	
C	UPDATE COMPANY LOGO	11/29/07	JRK	DATE:	06/01/04	SCALE: NTS
B	CORRECT PART WEIGHT	01/10/05	JRK	CAD #		SHEET: 2 of 3
A	ORIGINAL DRAFT	06/01/04	JRK	TOOL #	H0385-1	
REV	DESCRIPTION	DATE	INT	CM3822R151R-10-E-2		



DIMENSIONS:

A	9.78 [.385]	± 0.15 [.006]
B	5.72 [.225]	± 0.10 [.004]
B ₁	6.73 [.265]	MAX
C	7.62 [.300]	± 0.13 [.005]
C ₁	8.40 [.330]	MAX.
D	2.41 [.095]	± 0.08 [.003]
E	0.89 [.035]	± 0.13 [.005]
E ₁	1.91 [.075]	± 0.13 [.005]

WIRE DIMENSIONS:

T ₁	1.91 [.075]	± 0.25 [.010]
T ₂	0.38 [.015]	TYP.
T ₃	0.38 [.015]	TYP.

ELECTRICAL TESTING		
	GROSS	GROSS
TEST:	Z	Z
# TURNS	1	1
AWG	22	22
FREQUENCY	25 MHz	100 MHz
NOMINAL	110 Ω	150 Ω
MINIMUM	85 Ω	120 Ω
WEIGHT/1000	1.82 kgs.	4.02 lbs.

UNCONTROLLED DOCUMENT

NOTES: UNLESS OTHERWISE SPECIFIED

1. WIRE: REFERENCE STEWARD WIRE PURCHASE SPEC. W0022-*1.
2. IMPEDANCE VALUES ARE GROSS, MEASURED USING W0022-*1 WIRE PLACED AGAINST END OF SLOT w/ NO D.C. BIAS.
3. REFERENCE STEWARD CORE 24H0385-100.
4. NO MORE THAN 0.18 [.007] DIFFERENCE FROM THE LONGEST TO THE SHORTEST CONDUCTOR ON ONE SIDE.
5. TERMINATION FINISH IS 100% TIN.
6. THIS PART HAS NO PIN POLARITY.

DIMENSIONS ARE IN mm (INCHES).				This print is the property of Laird Tech. and is loaned in confidence subject to return upon request and with the understanding that no copies shall be made without the written consent of Laird Tech. All rights to design or invention are reserved.		Laird TECHNOLOGIES	
E	ADD RATED VOLTAGE AND NOTE 6	08/30/12	QIU	PROJECT/PART NUMBER:	REV	PART TYPE:	DRAWN BY:
D	UPDATE COMPANY LOGO ADD EQUIVALENT CIRCUIT	01/30/09	JRK	CM3822R151R-10	E	ASSEMBLY	JRK
C	UPDATE COMPANY LOGO	11/29/07	JRK	DATE: 06/01/04	SCALE:	NTS	SHEET:
B	CORRECT PART WEIGHT	01/10/05	JRK	CAD #	H0385-1	3 of 3	
A	ORIGINAL DRAFT	06/01/04	JRK	CM3822R151R-10-E-3			
REV	DESCRIPTION	DATE	INT				