

PART NAME

NEMA 4X DIE-CAST ALUMINUM BOX w/MTG. BRKTS.

PART No.

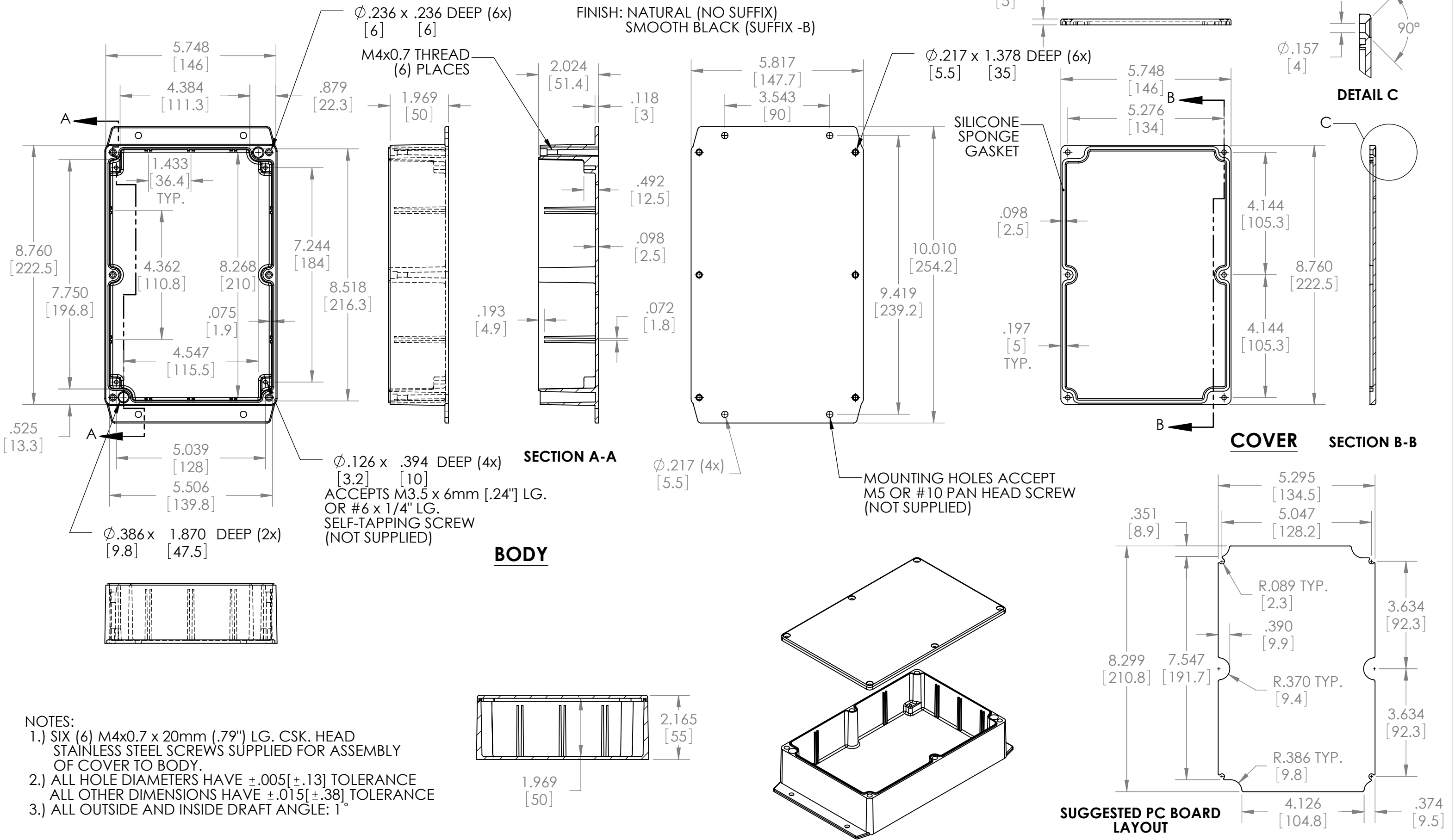
AN-2857 & AN-2857-B

REVISION DATE

11-15-11

MATERIAL: ALUMINUM ALLOY #ADC-12

FINISH: NATURAL (NO SUFFIX)  
SMOOTH BLACK (SUFFIX -B)



Ø.236 x .236 DEEP (6x)  
[6] [6]  
M4x0.7 THREAD  
(6) PLACES

SECTION A-A  
Ø.126 x .394 DEEP (4x)  
[3.2] [10]  
ACCEPTS M3.5 x 6mm [.24"] LG.  
OR #6 x 1/4" LG.  
SELF-TAPPING SCREW  
(NOT SUPPLIED)

**BODY**

SILICONE SPONGE GASKET

**COVER SECTION B-B**

- NOTES:
- SIX (6) M4x0.7 x 20mm (.79") LG. CSK. HEAD STAINLESS STEEL SCREWS SUPPLIED FOR ASSEMBLY OF COVER TO BODY.
  - ALL HOLE DIAMETERS HAVE ±.005[±.13] TOLERANCE ALL OTHER DIMENSIONS HAVE ±.015[±.38] TOLERANCE
  - ALL OUTSIDE AND INSIDE DRAFT ANGLE: 1°

**SUGGESTED PC BOARD LAYOUT**