

XF2U

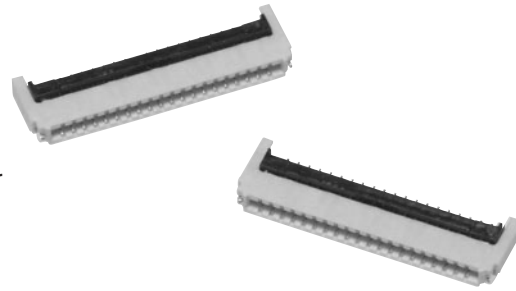
FOR FPC

Rotary Backlock Connector (0.5-mm Pitch, Dual Contact)

Rotary Backlock Mechanism with a Depth of 3.5-mm and Low Profile of 0.9 mm

- Ultra-slim connector with a depth of 3.5 mm.
- Dual contact reduces the number of parts.
- Wide molding wall on the rear bottom of the connector allows greater freedom in board design.
- Gold plated with an applicable FPC thickness of 0.2 mm.
- Halogen Free (See note.)

Note: OMRON uses the following standard to determine halogen-free construction:
900 ppm max. for Br, 900 ppm max. for Cl, and 1,500 ppm max. for Br+Cl.



RoHS Compliant

■ Ratings and Specifications

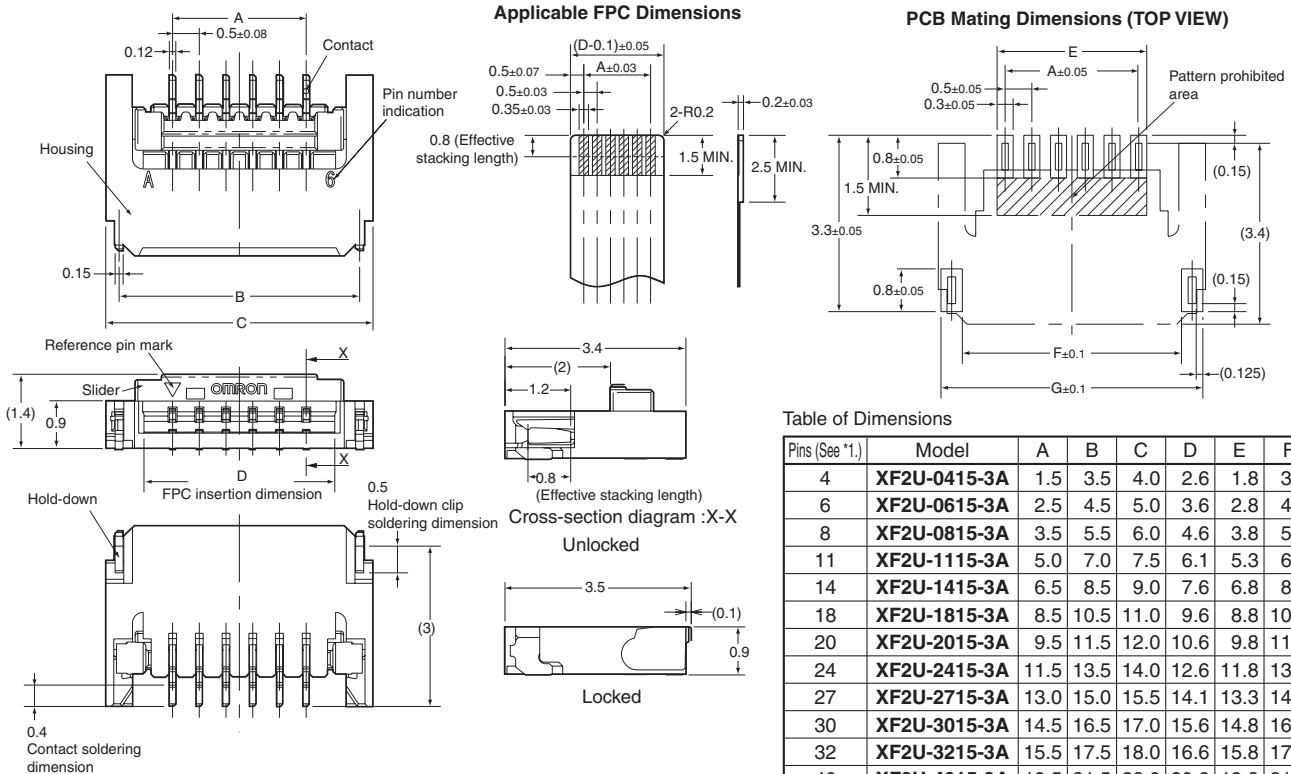
Rated current	0.5A AC/DC
Rated voltage	50V AC/DC
Contact resistance	60mΩ max. (at 20 mV DC max., 100 mA max.)
Insulation resistance	100MΩ min. (at 250V DC)
Withstand voltage	250V AC for 1 min. (leakage current: 1 mA max.)
Insertion tolerance	20 times
Ambient operating temperature	-30 to 85°C (with no icing or condensation)

■ Materials and Finish

Housing	LCP resin (UL94V-0)/natural
Slider	LCP resin (UL94V-0)/black
Contacts	Spring copper alloy/nickel substrate (2μm) Gold-plated contacts (0.15μm)
Hold-down	Spring copper alloy/fused-tin plating (2μm)

■ Dimensions

XF2U-□□15-3A



■ Ordering Information (Please consult your trading company for the delivery date.)

Pins (See *1.)	Model	Pins (See *1.)	Model	Quantity per reel (unit) (See *2.)
4	XF2U-0415-3A	20	XF2U-2015-3A	3,000
6	XF2U-0615-3A	24	XF2U-2415-3A	
8	XF2U-0815-3A	27	XF2U-2715-3A	
11	XF2U-1115-3A	30	XF2U-3015-3A	
14	XF2U-1415-3A	32	XF2U-3215-3A	
18	XF2U-1815-3A	40	XF2U-4015-3A	

*1. Please consult your OMRON representative for available pin count.

*2. Please order by integer multiple of the quantity per reel.