

- Replacement for 35W MR16 halogen lamp
- Binned in a 4-step level to provide good colour consistency
- Dimmable
- Lifetime of 25,000 hrs
- Perfect for accent and general lighting



Order Code 52211

General Data

Lamp Socket GU5.3
Design Lens

Geometric Data

Length (mm) 58
Diameter (mm) 50
Weight (g) 50

Electric Data

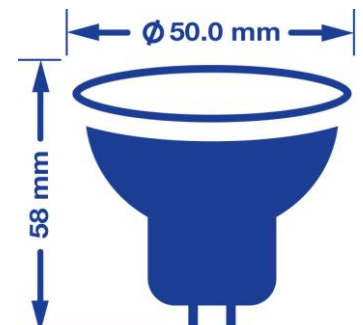
Wattage (W) 7.0
Voltage (V) 12 V AC/DC
Dimmable Yes
Power Factor 0.75
Operating Frequency (Hz) 50-60

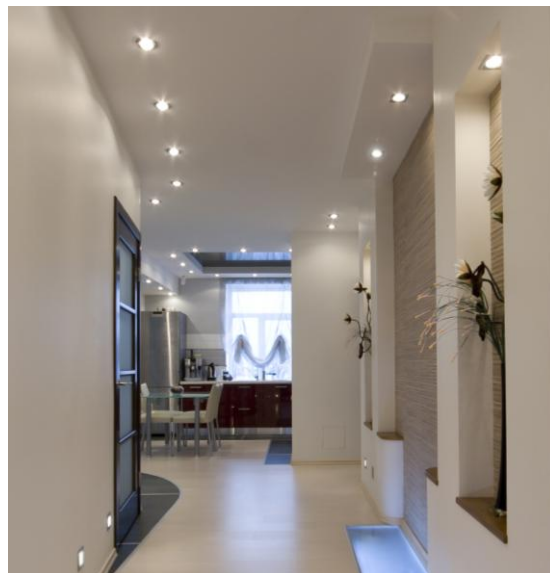
Photometric Data

Luminous Flux (lm) 420
CRI ≥ 80
CCT (K) 4000
Luminous Intensity (cd) 460
Beam Angle (°) 55
Luminous Efficiency (lm/W) 60
Lifetime (hrs) 25,000

Switching cycle 18,000

Wattage Equivalent (W) 35





Order Code

52211

Product Description

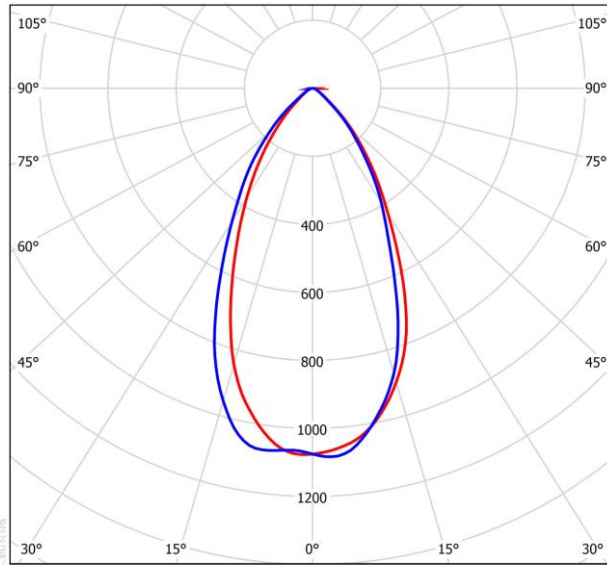
LED MR16 GU5.3 7W 4000K NW 420LM 55deg DIM

Technical Packaging Details

Barcode	023942522119
EAN 128	(02)00023942522119(37)40(91)162
EAN 14	50023942522114
Pack Dimensions (HxWxL) mm	62 x 50 x 50
Pack Weight	77 g
MOQ	10
Carton Dimensions (HxWxL) mm	330 x 300 x 150
Cartons/Pallet	51
Layers/Pallet	6
Units/Pallet	2040

Photometric Diagram

52211



cd/klm — C0 - C180 — C90 - C270 η = 100%

0.5	0.51	E(0°)	1847
	0.52	E(C90) 26.9°	657
1.0	1.01	E(C0) 27.5°	647
	1.04	E(0°)	462
1.5	1.52	E(C90) 26.9°	164
	1.56	E(C0) 27.5°	162
2.0	2.03	E(0°)	205
	2.08	E(C90) 26.9°	73
2.5	2.54	E(C0) 27.5°	72
	2.60	E(0°)	115
3.0	3.04	E(C90) 26.9°	41
	3.12	E(C0) 27.5°	40
	2.54	E(0°)	74
	2.60	E(C90) 26.9°	26
	3.04	E(C0) 27.5°	26
	3.12	E(0°)	51
	3.04	E(C90) 26.9°	18
	3.12	E(C0) 27.5°	18

Distance [m] Cone Diameter [m] Illuminance [lx]
— C0 - C180 (Half-value Angle: 55.0°)
— C90 - C270 (Half-value Angle: 53.8°)