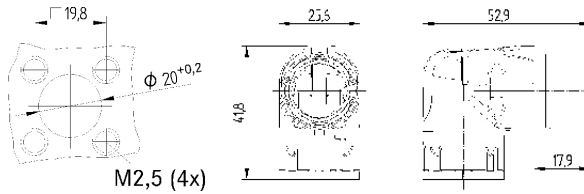


EPIC® M23 A3

Special version IP65
New part number

Info
!!! Special Degree of Protection IP65 !!!



Benefits

- Housings are very flexible - cable connectors with huge clamping range, receptacle housings for insert assembly from front- and rear direction

Application range

- Plant engineering
- Servo drives and Servo harnessings
- Measurement and control technology

Product features

- Panel mount base, angled, rotatable

- Front mounting

Suitable inserts


- EPIC® M23 Inserts 6 pole]
- EPIC® M23 Inserts 7 pole
- EPIC® M23 Inserts 8+1 pole
- EPIC® M23 Inserts 9 pole
- EPIC® M23 Inserts 12 pole
- EPIC® M23 Inserts 16 pole
- EPIC® M23 Inserts 17 pole
- EPIC® M23 Inserts 12 pole D-Sub
- EPIC® M23 Inserts 17 pole D-Sub

Technical data

- Material**
Housing: zinc die casting nickel-plated
Sealing: FPM
- IP**
Degree of protection
IP65
- Range of temperature**
-25 °C - +125 °C

Part number	Part	Coding	Fastening type	Pieces / PU
Type M23 A3 angled rotatable front wall mounting				
24420055	M23 A3	black (N)	Ø2,7mm (4x)	5
24420054	M23 A3	black (N)	Ø2,7mm (4x)	20

Special version IP65
New part number

U.I. Lapp GmbH	PRODUCT INFORMATION	
	EPIC® M23 Inserts 12 pole	12.09.2012

Inserts for M23 circular connectors
 Universal further processing of the M23 inserts through different packaging units. Fully assembled with suitable solder contacts or unpopulated for individual assembly with crimp or solder contacts



Application range

Plant engineering
 Measurement and control technology
 Apparatus construction

Remark

The inserts are suitable for both male and female contacts. For a complete connection, you will need one P-component and one E-component. P-component = left turning (anticlockwise), E-component = right turning (clockwise)
 Photographs are not to scale and do not represent detailed images of the respective products.



Technical Data


Rated voltage (V):	100 V
Rated impulse voltage:	1.5 kV
Rated current (A):	7 A
Contact resistance:	< 4 mOhm
Contacts:	Gold-plated brass
Number of contacts:	12
Termination methods:	Crimp termination: 0.14 - 1.0 mm ² Solder termination: up to 1.0 mm ²
Cycle of mechanical operation:	100
Temperature range:	-25°C - +125°C
Degree of soiling:	3

Product Management	Document: LAPP_PRO122470EN.pdf	1 / 4
--------------------	--------------------------------	-------

EPIC® M23 Inserts 12 pole


12.09.2012

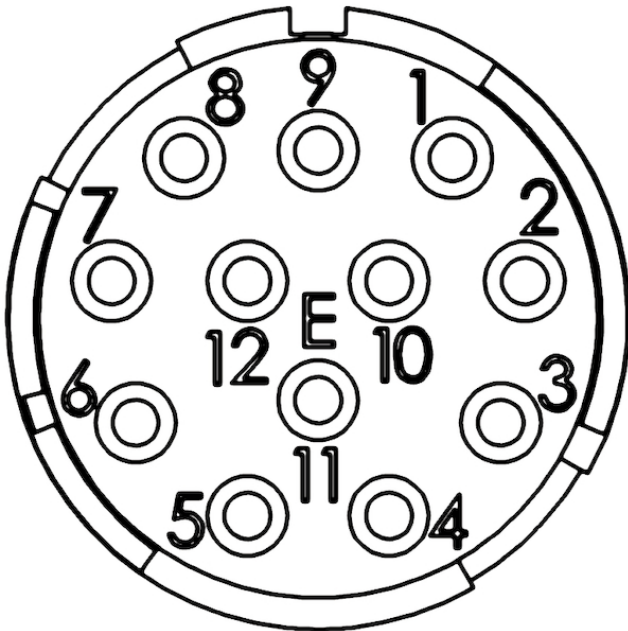
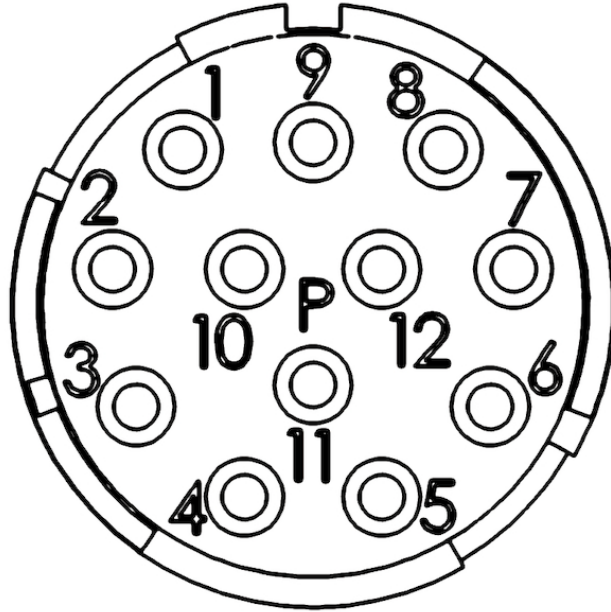
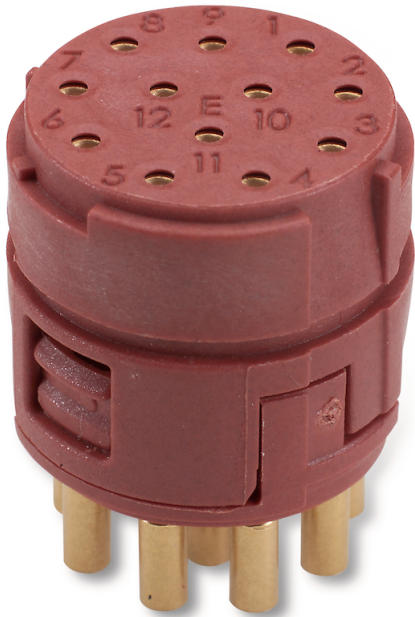
Part number	Article	Inserts	Contacts included	Pin configuration	Pieces / PU
12-pin inserts, P-part = rotation to the left (anticlockwise)					
73002712	P-part	Unpopulated		12	5
73002713	P-part	Unpopulated		12	20
73002714	P-part	+ male contacts, solder	12	12	5
73002715	P-part	+ male contacts, solder	12	12	20
73002716	P-part	+ female contacts, solder	12	12	5
73002717	P-part	+ female contacts, solder	12	12	20
12-pin inserts, E-part = rotation to the right (clockwise)					
73002718	E-Part	Unpopulated		12	5
73002719	E-Part	Unpopulated		12	20
73002720	E-Part	+ male contacts, solder	12	12	5
73002721	E-Part	+ male contacts, solder	12	12	20
73002722	E-Part	+ female contacts, solder	12	12	5
73002723	E-Part	+ female contacts, solder	12	12	20

U.I. Lapp GmbH	PRODUCT INFORMATION	
	EPIC® M23 Inserts 12 pole	12.09.2012



Product Management	Document: LAPP_PRO122470EN.pdf	3 / 4
--------------------	--------------------------------	-------

U.I. Lapp GmbH	PRODUCT INFORMATION	
EPIC® M23 Inserts 12 pole		12.09.2012



Product Management	Document: LAPP_PRO122470EN.pdf	4 / 4
--------------------	--------------------------------	-------