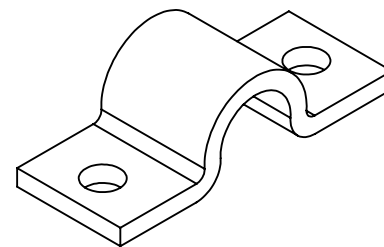
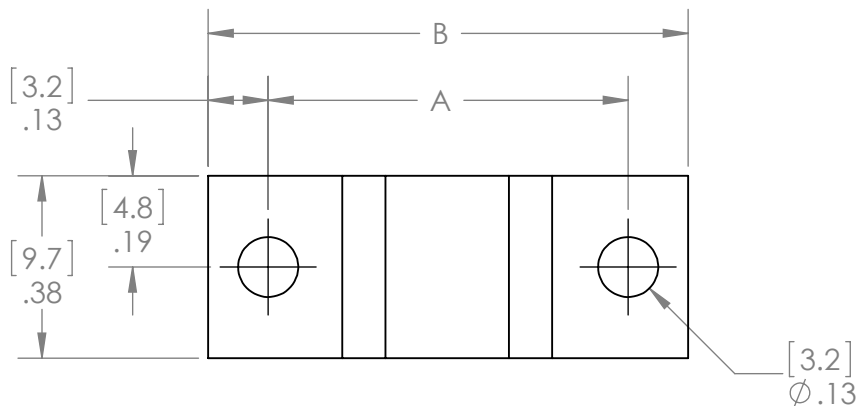


THE INFORMATION CONTAINED IN THIS DRAWING IS THE SOLE PROPERTY OF ANDERSON POWER PRODUCTS. ANY REPRODUCTION IN PART OR WHOLE WITHOUT THE WRITTEN PERMISSION OF ANDERSON POWER PRODUCTS IS PROHIBITED.

Copyright 2011

ANDERSON POWER PRODUCTS RESERVES THE RIGHT TO ALTER PRODUCT TYPES, THEIR TECHNICAL DATA, DIMENSION, STYLE AND ACCESSORIES WITHOUT PRIOR NOTIFICATION.



KIT P/N	DESC	DIM A		DIM B	
		in	mm	in	mm
115G1	2 X 2	.75	19.0	1.00	25.4
115G2	2 X 3	1.00	25.4	1.25	31.8
115G3	2 X 4	1.25	31.8	1.50	38.1
115G4	2 X 5	1.31	33.3	1.55	39.4

DIMENSIONS ARE IN: INCH [MM]		<i>APPROVALS</i>		ANDERSON POWER PRODUCTS	
UNLESS OTHERWISE STATED		DRAWN	8/31/1988	TITLE POWERPOLE PAK CLAMPS	
TOLERANCES:		WR			
DECIMALS (INCH) DECIMALS (MM) ANGLES		CHECKED	8/31/1988		
.XX ±.02 .X ±.5 ±2°		HHR			
SURFACE FINISH:		MFG APPRV		SIZE A DWG NO. 112019S REV. 1	
MACHINED 128 [3.2] ✓		QC APPRV			
MOLDED 64 [1.6] ✓		ENG APPRV	8/31/1988	SCALE NONE CADFILE 03440 SHEET 1 OF 1	
MATERIAL: .059 thick cold rolled steel		-CAD GENERATED DRAWING- DO NOT MANUALLY UPDATE DO NOT SCALE			
FINISH: zinc plate yellow chromate					

1	ECRN-14881 COMBINED P1-P4 IN OUTLINE DRWG	TWE	4/8/11
REV.	DESCRIPTION	APPRV	DATE
REVISIONS			