

LTM9011-14, LTM9010-14,
 LTM9009-14, LTM9008-14, LTM9007-14,
 LTM9006-14: 14-Bit, 125/105/80/
 65/40/25Msps Octal ADC Family

DESCRIPTION

DC1884 supports the LTM[®]9011 high speed, octal ADC family.

The versions of the 1884A demo board are listed in Table 1. Depending on the required resolution and sample rate, the DC1884 is supplied with the appropriate ADC. The circuitry on the analog inputs is optimized for analog input

frequencies from 1MHz to 70MHz. Refer to the data sheet for proper input networks for different input frequencies.

Design files for this circuit board are available at
<http://www.linear.com/demo>

LT, LT, LTC, LTM, Linear Technology and the Linear logo are registered trademarks of Linear Technology Corporation. All other trademarks are the property of their respective owners.

Table 1. DC1884 Variants

DC1884 VARIANTS	ADC PART NUMBER	RESOLUTION	MAXIMUM SAMPLE RATE	INPUT FREQUENCY
1884A-A	LTM9011-14	14-Bit	125Msps	1MHz to 70MHz
1884A-B	LTM9010-14	14-Bit	105Msps	1MHz to 70MHz
1884A-C	LTM9009-14	14-Bit	80Msps	1MHz to 70MHz
1884A-D	LTM9008-14	14-Bit	65Msps	1MHz to 70MHz
1884A-E	LTM9007-14	14-Bit	40Msps	1MHz to 70MHz
1884A-F	LTM9006-14	14-Bit	25Msps	1MHz to 70MHz

PERFORMANCE SUMMARY (T_A = 25°C)

PARAMETER	CONDITION	VALUE
Supply Voltage – DC1884A	Depending on Sampling Rate and the A/D Converter Provided, This Supply Must Provide Up to 700mA	Optimized for 3.5V [3.3V to 6V Minimum/Maximum]
Analog Input Range	Depending on SENSE Pin Voltage	1V _{P-P} to 2V _{P-P}
Logic Input Voltages	Minimum Logic High	1.3V
	Maximum Logic Low	0.6V
Logic Output Voltages (Differential)	Nominal Logic Levels (100Ω Load, 3.5mA Mode)	350mV/1.25V Common Mode
	Minimum Logic Levels (100Ω Load, 3.5mA Mode)	247mV/1.25V Common Mode
Sampling Frequency (Convert Clock Frequency)	See Table 1	
Encode Clock Level	Single-Ended Encode Mode (ENC ⁻ Tied to GND)	0V to 3.6V
Encode Clock Level	Differential Encode Mode (ENC ⁻ Not Tied to GND)	0.2V to 3.6V
Resolution	See Table 1	
Input Frequency Range	See Table 1	
SFDR	See Applicable Data Sheet	
SNR	See Applicable Data Sheet	

QUICK START PROCEDURE

DC1884 is easy to set up to evaluate the performance of the LTM9011 family of A/D converters. For proper measurement equipment setup, refer to Figure 1 and follow the procedure explained in the following sections.

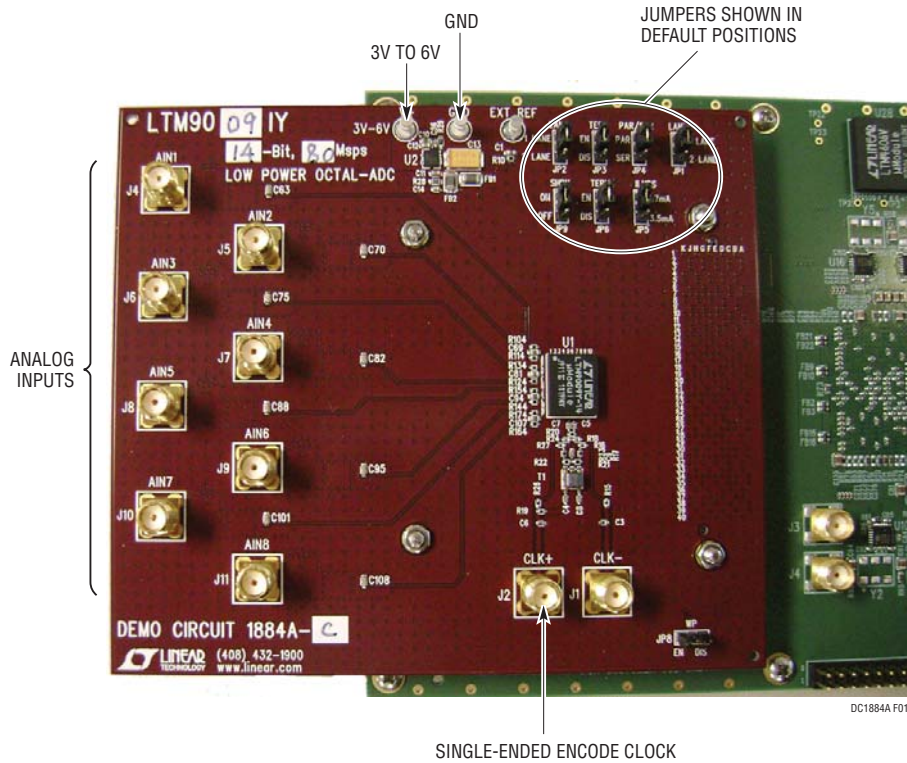


Figure 1. Test Setup of DC1884

QUICK START PROCEDURE

Setup

If a DC1371 data acquisition and collection system was supplied with the DC1884, follow the DC1371 Quick Start Guide to install the required software and to connect the DC1371 to the DC1884 and to a PC.

DC1884 Board Jumpers

The DC1884 board should have the following jumper settings as default positions (as per Figure 1):

JP14: PAR/SER: Selects Parallel or Serial Programming Mode. (Default: Serial)

Optional Jumpers AJ3 and J6: Term: Enables/Disables Optional Output Termination. (Default: Removed)

JP5: I_{LVDS}: Selects Either 1.75mA or 3.5mA of Output Current for the LVDS Drivers. (Default: Removed)

JP1 and JP2: Lane: Selects Either 1-Lane or 2-Lane Output Modes (Default: Removed)

Note: The DC1371 does not support 1-Lane operation.

JP9: SHDN: Enables and Disables the LTM9011. (Default: Removed)

JP8: WP: Enable/Disables Write Protect for the EEPROM. (Default: Removed)

Note: Optional jumper should be left open to ensure proper serial configuration.

Applying Power and Signals to the DC1884

The DC1371 is used to acquire data from the DC1884. The DC1371 must first be connected to a powered USB port and have 5V applied power before applying 3.5V across the pins marked V⁺ and "GND" on the DC1884. DC1884 requires 3.5V for proper operation.

The DC1884 demonstration circuit requires up to 700mA depending on the sampling rate and the A/D converter supplied.

The DC1884 should not be removed or connected to the DC1371 while power is applied.

Analog Input Network

For optimal distortion and noise performance, the RC network on the analog inputs may need to be optimized for different analog input frequencies. For input frequencies above 70MHz, refer to the LTM9011 data sheet for a proper input network.

In almost all cases, filters will be required on both analog input and encode clock to provide data sheet SNR.

The filters should be located close to the inputs to avoid reflections from impedance discontinuities at the driven end of a long transmission line. Most filters do not present 50Ω outside the passband. In some cases, 3dB to 10dB pads may be required to obtain low distortion.

If your generator cannot deliver full-scale signals without distortion, you may benefit from a medium power amplifier based on a gallium arsenide gain block prior to the final filter. This is particularly true at higher frequencies where IC based operational amplifiers may be unable to deliver the combination of low noise figure and high IP3 point required. A high order filter can be used prior to this final amplifier, and a relatively lower Q filter used between the amplifier and the demonstration circuit.

QUICK START PROCEDURE

Encode Clock

Note: Apply an encode clock to the SMA connector on the DC1884 demonstration circuit board marked “J2 CLK+.” As a default, the DC1884 is populated to have a single-ended input.

For the best noise performance, the ENCODE input must be driven with a very low jitter, square wave source. The amplitude should be large, up to $3V_{P-P}$ or 13dBm. When using a sinusoidal signal generator, a squaring circuit can be used. Linear Technology also provides demo board DC1075A that divides a high frequency sine wave by four, producing a low jitter square wave for best results with the LTM9011.

Using bandpass filters on the clock and the analog input will improve the noise performance by reducing the wideband noise power of the signals. In the case of the DC1884 a bandpass filter used for the clock should be used prior to the DC1075A. Data sheet FFT plots are taken with 10 pole LC filters made by TTE (Los Angeles, CA) to suppress signal generator harmonics, non harmonically related spurs and broadband noise. Low phase noise Agilent 8644B generators are used for both the clock input and the analog input.

Digital Outputs

Data outputs, data clock, and frame clock signals are available on J1 of the DC1884. This connector follows the VITA-57/FMC standard, but all signals should be verified when using an FMC carrier card other than the DC1371.

Software

The DC1371 is controlled by the PScope system software that can be downloaded from the Linear Technology website at <http://www.linear.com/software/>.

To start the data collection software, “PScope.exe,” which is installed by default to `\Program Files\LTC\PScope\`, double click the PScope icon or bring up the run window under the start menu, and browse to the PScope directory and select “PScope.”

If the DC1884 is properly connected to the DC1371, PScope should automatically detect the DC1884 and configure itself accordingly.

If everything is hooked up properly and a powered and suitable convert clock is present, clicking the “Collect” button should result in time and frequency plots displayed in the PScope window. Additional information and help for PScope is available in the DC1371 Quick Start Guide, and in the online help feature within the PScope program itself.

QUICK START PROCEDURE

Serial Programming

PScope has the ability to program the DC1884 serially through the DC1371. There are several options available in the LTM9011 family that are only available through serially programming. PScope allows all of these features to be tested.

These options are available by first clicking on the “Set Demo Bd Options” icon on the PScope toolbar (Figure 2).

This will bring up the menu shown in Figure 3.

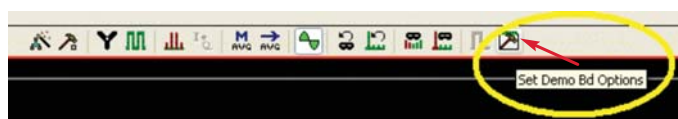


Figure 2. PScope Toolbar

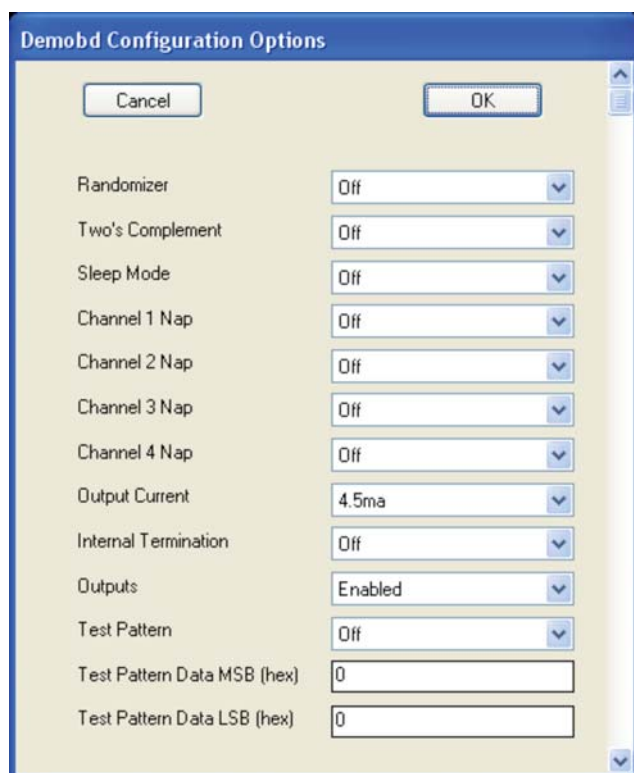


Figure 3. Demo Board Configuration Options

This menu allows any of the options available for the LTM9011 family to be programmed serially. The LTM9011 family has the following options:

Randomizer: Enables Data Output Randomizer.

- Off (Default): Disables data output randomizer.
- On: Enables data output randomizer.

Two's Complement: Enables Two's Complement Mode.

- Off (Default): Selects offset binary mode.
- On: Selects two's complement mode.

Sleep Mode: Selects Between Normal Operation and Sleep Mode.

- Off (Default): Entire ADC is powered and active.
- On: The entire ADC is powered down.

Channel 1 Nap: Selects Between Normal Operation and Putting Channel 1 in Nap Mode.

- Off (Default): Channel 1 is active.
- On: Channel 1 is in nap mode.

Channel 2 Nap: Selects Between Normal Operation and Putting Channel 2 in Nap Mode.

- Off (Default): Channel 2 is active.
- On: Channel 2 is in nap mode.

Channel 3 Nap: Selects Between Normal Operation and Putting Channel 3 in Nap Mode.

- Off (Default): Channel 3 is active.
- On: Channel 3 is in nap mode.

Channel 4 Nap: Selects Between Normal Operation and Putting Channel 4 in Nap Mode.

- Off (Default): Channel 4 is active.
- On: Channel 4 is in nap mode.

QUICK START PROCEDURE

Output Current: Selects the LVDS Output Drive Current.

- 1.75mA (Default): LVDS output driver current.
- 2.1mA: LVDS output driver current.
- 2.5mA: LVDS output driver current.
- 3.0mA: LVDS output driver current.
- 3.5mA: LVDS output driver current.
- 4.0mA: LVDS output driver current.
- 4.5mA: LVDS output driver current.

Internal Termination: Enables LVDS Internal Termination.

- Off (Default): Disables internal termination.
- On: Enables internal termination.

Outputs: Enables Digital Outputs.

- Enabled (Default): Enables digital outputs.
- Disabled: Disables digital outputs.

Test Pattern: Selects Digital Output Test Patterns. The desired test pattern can be entered into the text boxes provided.

- Off (Default): ADC input data is displayed.
- On: Test pattern is displayed.

Once the desired settings are selected, click “OK” and PScope will automatically update the register of the device on the DC1884 demo board.

PARTS LIST

ITEM	QTY	REFERENCE	PART DESCRIPTION	MANUFACTURER/PART NUMBER
DC1884A1				
1	5	C1, C69, C81, C94, C107	CAP, X5R, 2.2µF 16V 20%, 0603	TAIYO YUDEN, EMK107BJ225MA
2	0	C2	CAP, 0402	TBD
3	0	C3, C6	CAP, X7R, 0.01µF 16V 10%, 0402	OPT
4	19	C4, C8, C9, C58, C59, C65, C66, C71, C72, C77, C78, C84, C85, C90, C91, C97, C98, C103, C104	CAP, X7R, 0.01µF 16V 10%, 0402	AVX, 0402YC103KAT2A
5	10	C5, C7, C60, C67, C73, C79, C86, C92, C99, C105	CAP, NP0, 4.7pF 25V 10% 0402	AVX, 04023A4R7KAT2A
6	1	C10	CAP, X5R, 4.7µF 6.3V, 20%, 0603	TAIYO YUDEN, JMK107BJ475MA-T
7	2	C11, C12	CAP, X7R, 1µF 10V, 20%, 0603	AVX, 0603ZC105MAT1A
8	1	C13	CAP, TANT 100µF 10V, 20%, 6032	AVX, TAJW107M010R
9	3	C14, C55, C56	CAP, X5R, 0.1µF 10V, 10%, 0402	AVX, 0402ZD104KAT2A
10	16	C57, C61, C62, C64, C68, C74, C76, C80, C83, C87, C89, C93, C96, C100, C102, C106	CAP, COG, 8.2pF 50V, 5%, 0402	AVX, 04025A8R2JAT2A
11	8	C63, C70, C75, C82, C88, C95, C101, C108	CAP, X5R, 0.1µF 10V, 10%, 0603	AVX, 0603ZD104KAT2A
12	3	E1, E3, E4	TURRET, TESTPOINT 0.062 THICK BRD 0.094"	MILL MAX 2501-2-00-80-00-00-07-0
13	2	FB1, FB2	FERRITE BEAD, ?AMP 1206	MURATA BLM31PG330SN1L
14	8	JP1, JP2, JP3, JP4, JP5, JP6, JP8, JP9	HEADERS, SGL ROW 3 PINS 2mm CTRS	SAMTEC TMM-103-02-L-S
15	10	J1, J2, J4, J5, J6, J7, J8, J9, J10, J11	CON, SMA STRAIGHT	CONNEX, 132134
16	1	J3	BGA CONN, 10 × 40 PIN	SAMTEC, SEAM-40-02.0-S-10-2-A-K-TR
17	0	L1	IND, 0603	TBD
18	8	L2, L3, L4, L5, L6, L7, L8, L9	IND, 56nH, 0603	MURATA, LQP18MN56NG02D
19	8	R1, R2, R3, R6, R7, R8, R10, R85	RES, CHIP 1k, 1/16W, 5% 0402	VISHAY CRCW04021K00JNED
20	5	R4, R11, R82, R83, R84	RES, CHIP 10k, 1/16W, 5% 0402	VISHAY CRCW040210K0JNED
21	2	R5, R13	RES, CHIP 31.6k, 1/16W, 1% 0402	VISHAY CRCW040231K6FKED
22	4	R9, R19, R20, R86	RES, CHIP 100, 1/16W, 5% 0402	VISHAY CRCW0402100RJNED
23	0	R14, R15, R16, R18, R24, R25, R26, R27	RES, 0402	TBD
24	2	R17, R23	RES, CHIP 5.1, 1/16W, 5% 0402	VISHAY CRCW04025R10JNED
25	10	R21, R22, R104, R114, R124, R134, R144, R154, R164, R174	RES, CHIP 49.9, 1/16W, 1% 0402	VISHAY CRCW040249R9FKED
26	1	R28	RES, CHIP 3k, 1/16W, 5% 0603	VISHAY CRCW06033K00JNEA
27	1	R29	RES, CHIP 180k, 1/16W, 1% 0603	VISHAY CRCW0603180KFKEA
28	0	R87, R88, R89, R90, R91, R92, R93, R94	RES, CHIP, 100, 1/16W, 1% 0201	OPT
29	24	R95, R96, R97, R105 TO R107, R115 TO R117, R125, R126, R128, R135 TO R137, R145, R146, R148, R155 TO R157, R165, R166, R168	RES, CHIP, 86.6, 1/16W, 1%, 0402	YAGEO, RC0402FR-0786R6L
30	16	R98, R99, R108, R109, R118, R119, R127, R129, R138, R139, R147, R149, R158, R159, R167, R169	RES, CHIP, 33.2, 1/16W, 1% 0402	YAGEO, RC0402FR-0733R2L

DEMO MANUAL DC1884A

PARTS LIST

ITEM	QTY	REFERENCE	PART DESCRIPTION	MANUFACTURER/PART NUMBER
31	16	R100, R101, R110, R111, R120, R121, R130, R132, R140, R141, R150, R152, R160, R161, R170, R172	RES, CHIP, 10.0, 1/16W, 1% 0402	YAGEO, RC0402FR-0710RL
32	16	R102, R103, R112, R113, R122, R123, R131, R133, R142, R143, R151, R153, R162, R163, R171, R173	RES, CHIP, 10.0, 1/16W, 1% 0201	YAGEO, RC0201FR-0710RL
33	9	T1, T3, T5, T7, T9, T11, T13, T15, T17	XFMR, RF-SMT~1:1, TRANS-SM-22-M/A-COM	M/A-COM, MABA-007159-000000
34	8	T4, T6, T8, T10, T12, T14, T16, T18	XFMR, FLUX-COUPLED, TRANS-SM-22-M/A-COM	M/A-COM, MABAES0060
35	1	U2	IC, ADJUSTABLE LDO, DFN8DD	LINEAR TECHNOLOGY, LT3080EDD
36	1	U3	IC, SERIAL EEPROM TSSOP-8	MICROCHIP, 24LC32A-I/ST
37	8	AS SHOWN ON ASSY DWG	SHUNT, 0.079" CENTER	SAMTEC, 2SN-BK-G
			STENCIL (TOP AND BOTTOM)	DC1884-1

DC1884A-A

1	1	DC1884A-1	GENERAL BOM	
2	1	U1	IC, AD CONVERTER MODULE, BGA140, 11.25mm × 9mm × 2.72mm	LINEAR TECHNOLOGY, LTM9011IY-14

DC1884A-B

1	1	DC1884A-1	GENERAL BOM	
2	1	U1	IC, AD CONVERTER MODULE, BGA140, 11.25mm × 9mm × 2.72mm	LINEAR TECHNOLOGY, LTM9010IY-14

DC1884A-C

1	1	DC1884A-1	GENERAL BOM	
2	1	U1	IC, AD CONVERTER MODULE, BGA140, 11.25mm × 9mm × 2.72mm	LINEAR TECHNOLOGY, LTM9009IY-14

DC1884A-D

1	1	DC1884A-1	GENERAL BOM	
2	1	U1	IC, AD CONVERTER MODULE, BGA140, 11.25mm × 9mm × 2.72mm	LINEAR TECHNOLOGY, LTM9008IY-14

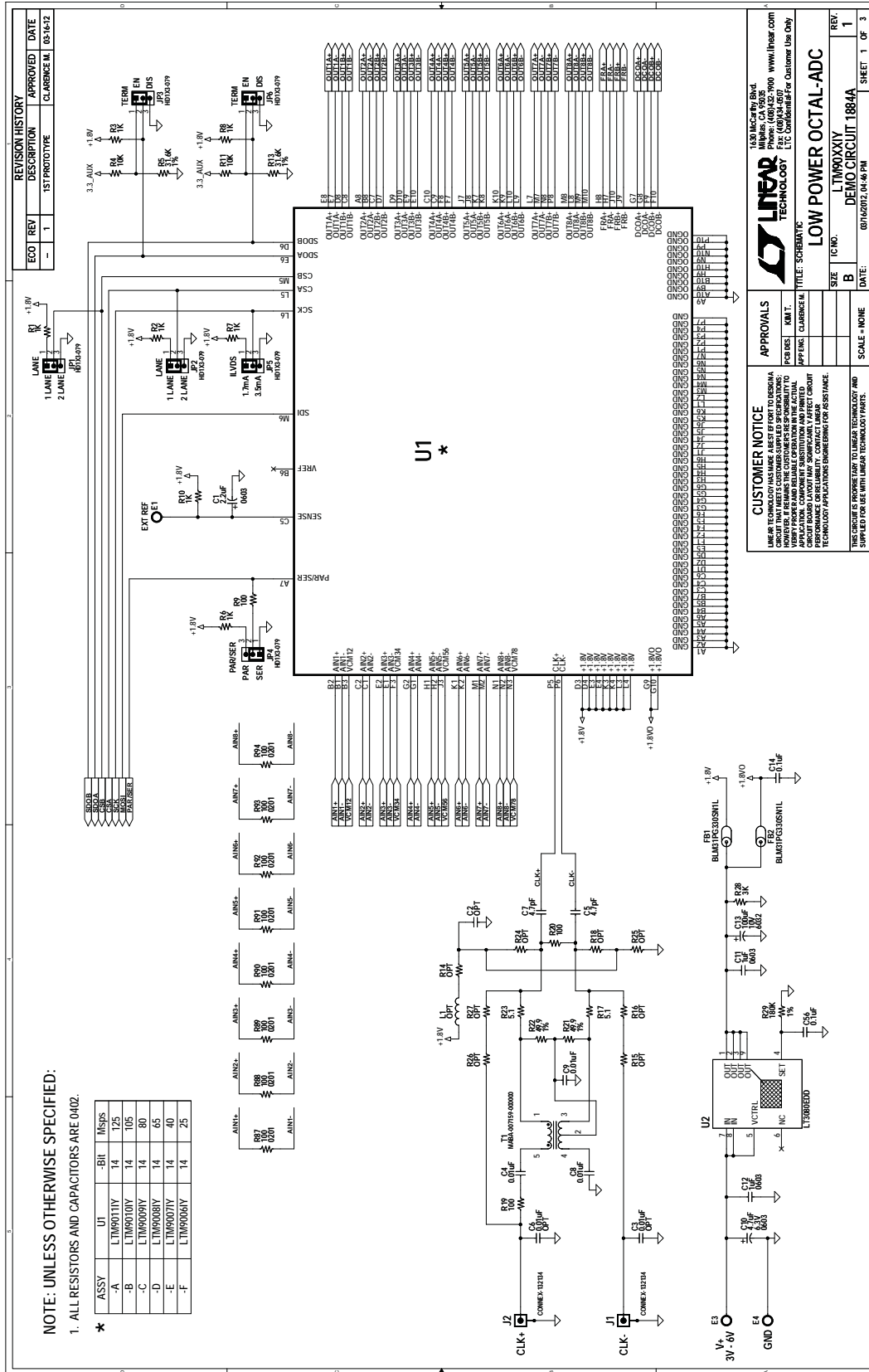
DC1884A-E

1	1	DC1884A-1	GENERAL BOM	
2	1	U1	IC, AD CONVERTER MODULE, BGA140, 11.25mm × 9mm × 2.72mm	LINEAR TECHNOLOGY, LTM9007IY-14

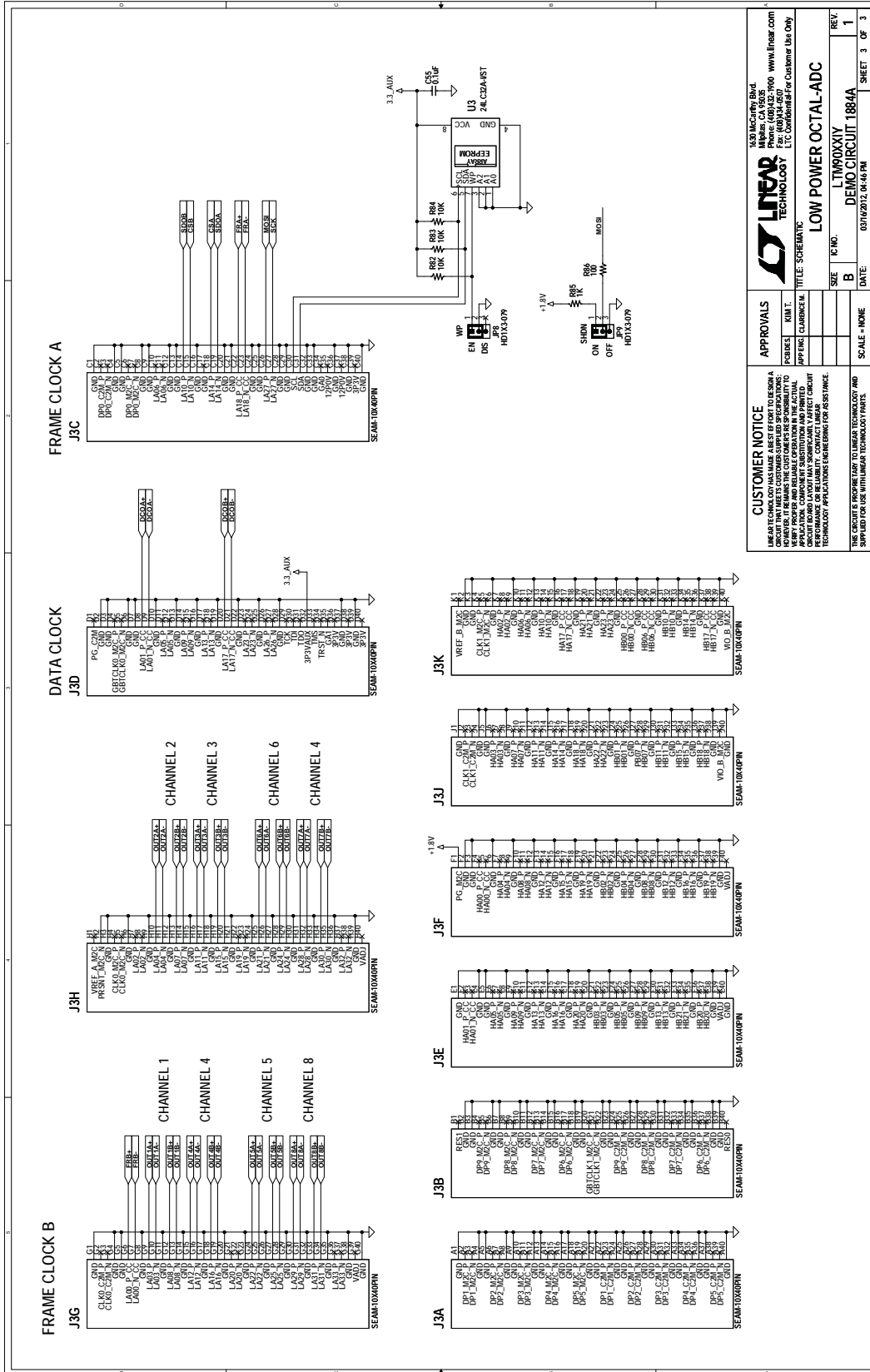
DC1884A-F

1	1	DC1884A-1	GENERAL BOM	
2	1	U1	IC, AD CONVERTER MODULE, BGA140, 11.25mm × 9mm × 2.72mm	LINEAR TECHNOLOGY, LTM9006IY-14

SCHEMATIC DIAGRAMS



SCHEMATIC DIAGRAMS



<p>CUSTOMER NOTICE LINEAR TECHNOLOGY HAS MADE A BEST EFFORT TO DESIGN A BOARD WITH THESE COMPONENTS IN ACCORDANCE WITH THE BOARD LAYOUT AND RECOMMENDATIONS. CUSTOMERS SHOULD VERIFY PROPER AND RELIABLE OPERATION IN THE ACTUAL CIRCUIT BOARD LAYOUT AND VERIFY THAT ANY DIFFERENCES IN TECHNOLOGY APPLICATIONS WILL NOT AFFECT THE BOARD LAYOUT.</p>		<p>APPROVALS</p> <p>DESIGN: _____ CHECKED: _____ DATE: _____</p>	
<p>LINEAR TECHNOLOGY 1530 McCarty Blvd Fremont, CA 94538-5000 Phone: (408)432-7900 Fax: (408)432-8007 E-Mail: info@linear.com WWW: www.linear.com LIC: Licensee of Customer (See Ddy)</p>		<p>LOW POWER OCTAL-ADC</p> <p>IC NO: LTM90XX1Y DEMO CIRCUIT 1884A DATE: 03/12/2012, 09:45 PM</p>	
<p>SCALE: NONE</p>		<p>SHEET 3 OF 3</p>	<p>REV. 1</p>



Information furnished by Linear Technology Corporation is believed to be accurate and reliable. However, no responsibility is assumed for its use. Linear Technology Corporation makes no representation that the interconnection of its circuits as described herein will not infringe on existing patent rights.

DEMO MANUAL DC1884A

DEMONSTRATION BOARD IMPORTANT NOTICE

Linear Technology Corporation (LTC) provides the enclosed product(s) under the following **AS IS** conditions:

This demonstration board (DEMO BOARD) kit being sold or provided by Linear Technology is intended for use for **ENGINEERING DEVELOPMENT OR EVALUATION PURPOSES ONLY** and is not provided by LTC for commercial use. As such, the DEMO BOARD herein may not be complete in terms of required design-, marketing-, and/or manufacturing-related protective considerations, including but not limited to product safety measures typically found in finished commercial goods. As a prototype, this product does not fall within the scope of the European Union directive on electromagnetic compatibility and therefore may or may not meet the technical requirements of the directive, or other regulations.

If this evaluation kit does not meet the specifications recited in the DEMO BOARD manual the kit may be returned within 30 days from the date of delivery for a full refund. THE FOREGOING WARRANTY IS THE EXCLUSIVE WARRANTY MADE BY THE SELLER TO BUYER AND IS IN LIEU OF ALL OTHER WARRANTIES, EXPRESSED, IMPLIED, OR STATUTORY, INCLUDING ANY WARRANTY OF MERCHANTABILITY OR FITNESS FOR ANY PARTICULAR PURPOSE. EXCEPT TO THE EXTENT OF THIS INDEMNITY, NEITHER PARTY SHALL BE LIABLE TO THE OTHER FOR ANY INDIRECT, SPECIAL, INCIDENTAL, OR CONSEQUENTIAL DAMAGES.

The user assumes all responsibility and liability for proper and safe handling of the goods. Further, the user releases LTC from all claims arising from the handling or use of the goods. Due to the open construction of the product, it is the user's responsibility to take any and all appropriate precautions with regard to electrostatic discharge. Also be aware that the products herein may not be regulatory compliant or agency certified (FCC, UL, CE, etc.).

No License is granted under any patent right or other intellectual property whatsoever. **LTC assumes no liability for applications assistance, customer product design, software performance, or infringement of patents or any other intellectual property rights of any kind.**

LTC currently services a variety of customers for products around the world, and therefore this transaction **is not exclusive**.

Please read the DEMO BOARD manual prior to handling the product. Persons handling this product must have electronics training and observe good laboratory practice standards. **Common sense is encouraged.**

This notice contains important safety information about temperatures and voltages. For further safety concerns, please contact a LTC application engineer.

Mailing Address:

Linear Technology
1630 McCarthy Blvd.
Milpitas, CA 95035

Copyright © 2004, Linear Technology Corporation