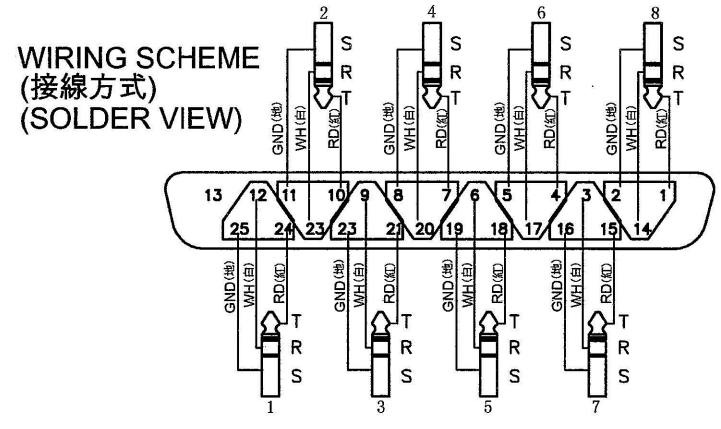
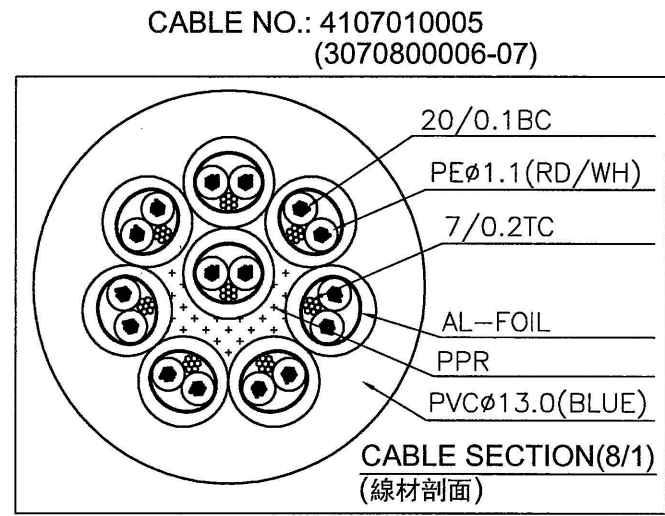
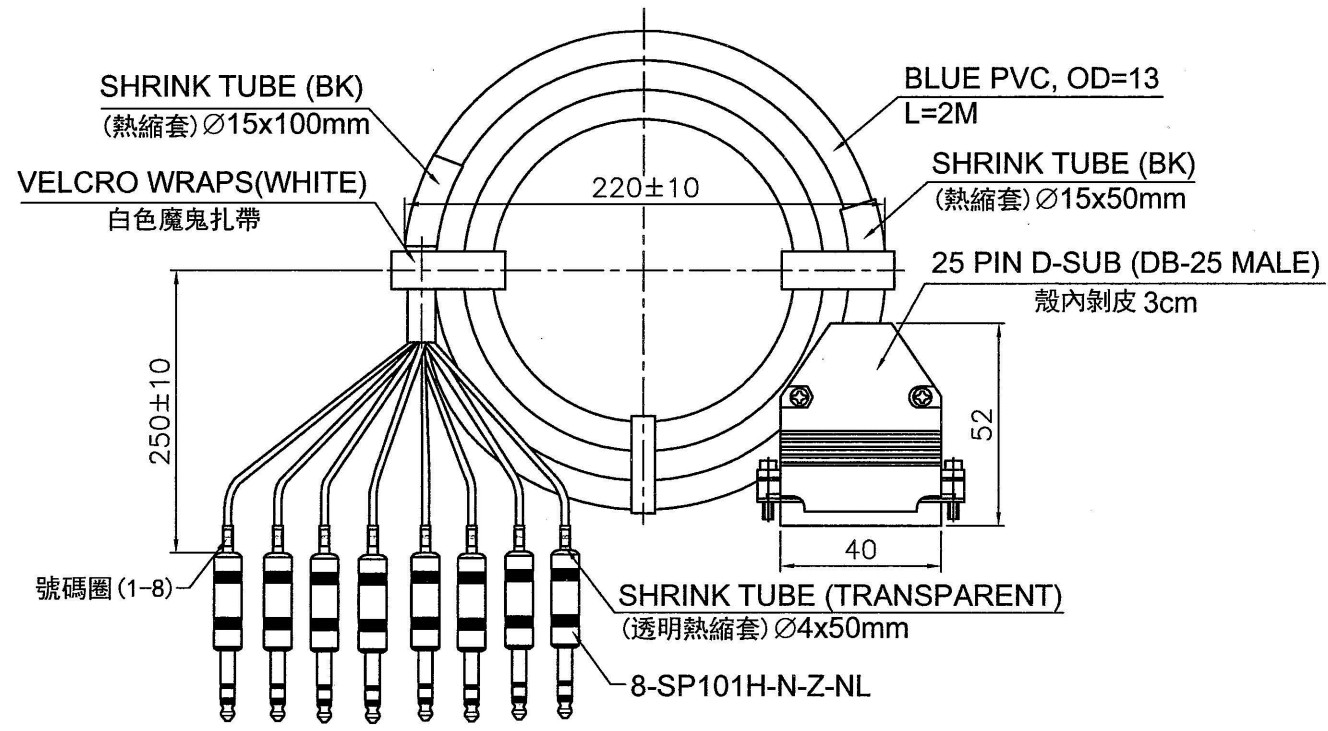


REVISIONS		
ISS	ZONE	DESCRIPTION\PER REQUEST\DATE
A2	D-1	200±10修改為250±10
V	OPEN	對客戶公開圖紙
	OPEN	對供應商公開圖紙
	CLOSED	僅限廠內使用

台灣日昇電子股份有限公司
ISSUE APPROVED
 發行核可 本文件與簽核紙本正本相符

MULTI-PAIR STAGE CABLE



DIMENSIONS ARE IN MILLIMETERS UNLESS OTHERWISE SPECIFIED TOLERANCES ANGLES = ±5° UP TO 6 = ±0.2 6-40 = ±0.4 40-120 = ±0.6 120-315 = ±1 ABOVE 315 = ±1.6	APPROVED	DATE	2013-05-06	TITLE DB-25 MALE TO 8CH PHONE PLUG STEREO CABLE ASSEMBLY, L=2M		
	CHECKED	DATE	2013-05-06			
	DRAWN 吳碧珊	DATE	2013-05-06			
	FILE NO. D:\ICAD\SSC\5209010041_SSC-916-2M-NL_CA001A2					
THIRD_ANGLE	ERP LINK:	5209010041	PART NO.	SSC-916-2M-NL	REV.	A2
SCALE	1/2					