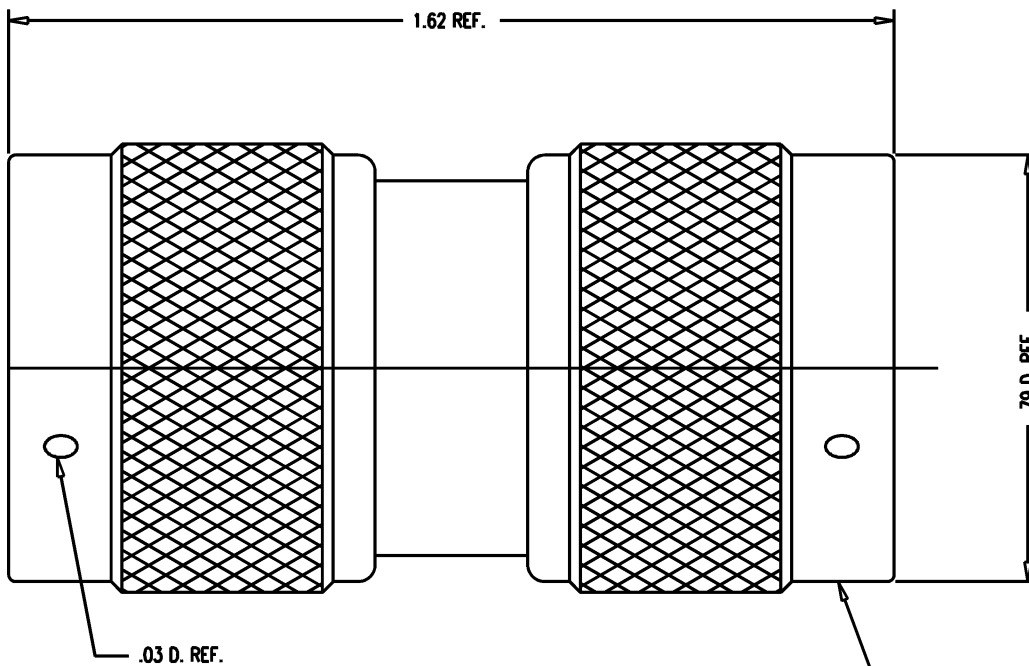


DASH NO.	M CODE	MADE FROM
----------	--------	-----------



STAMP: 91836 M55339/05-00057
 1209-9 XXXX
 DATE CODE

- NOTES:
1. INTERFACE PER MIL-STD-348, FIG. 304-1
 2. MATERIALS:
 GASKETS: SILICONE RUBBER PER ZZ-R-765
 C-RINGS & OUTER CONTACT: BRONZE, ASTM-B-103
 INSULATORS: TEFLON, ASTM-D-4894
 ALL OTHER METAL PARTS: BRASS, ASTM-B16
 3. FINISHES:
 CONTACT PIN: GOLD PLATE MIL-G-45204B
 ALL OTHER METAL PARTS: SILVER PLATE QQ-S-365
 4. ELECTRICAL CHARACTERISTICS:
 MINIMAL IMPEDANCE: 50 OHMS
 FREQUENCY RANGE: 0 TO 11 GHz
 VOLTAGE RATING: 1000 VOLTS RMS

- UNLESS OTHERWISE SPECIFIED
- | | | |
|---|---|---|
| 1. TOLERANCES: FRACTIONS & 2 PLACE DECIMALS \pm .010
3 PLACE DECIMALS \pm .004 ANGLES \pm 0-30'
CONCENTRICITY OF ANY 2 DIAMETERS MAY NOT EXCEED HALF THE SUM OF THEIR TOLERANCES. | 2. REMOVE ALL BURRS, BREAK SHARP EDGES .005 MAX.
3. NO FILLETS PERMITTED.
4. SURFACE ROUGHNESS 63 MICRONS RMS MAX.
5. ALL DIMENSIONS PRIOR TO PLATING.
6. ALL PLATING IN ACCORDANCE WITH KER 10004. | 7. ALL LEAD THREADS TO BE CHAMFERED 45- TO ROOT DIAMETER.
*CRITICAL DIMENSIONS |
|---|---|---|

GSD

GSD

M55339/05-00057

REVISIONS	
ISSUE	CHANGES
8	CN 37215 A REDRAWN PG 12/06/96

JJS0155

SCALE	4:1
APPROX SURFACE AREA	1209-9
USED ON	
REF:	ADAPTER, N, M-M
DRAWN PG	2/06/96
DESIGN LI	12/06/96
APPR.	DATE

KINGS
 ELECTRONICS CO., INC.
 TUCKAHOE, NEW YORK 10707

M55339/05-00057