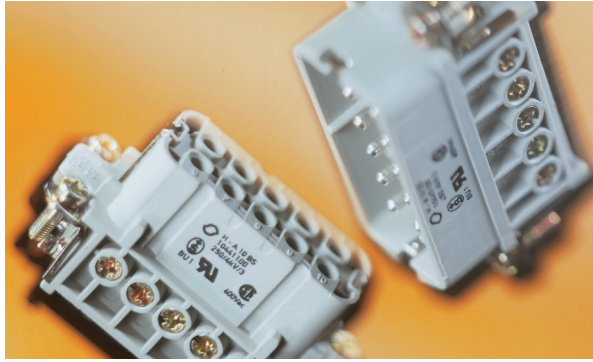


EPIC® HA Series



Similar to the HBE series inserts but more compact, EPIC® HA series inserts are used whenever space is limited. EPIC® HA 3/4 inserts and housings provide the smallest possible footprint in a 10A power connector. HA 10-48 inserts are unique because of their shortened ground straps, which still allow for a wire cross-section up to 2.5 mm². HA 3-48 screw-terminated inserts fit into EPIC® HA series housings. A modified EPIC® HB 48 housing can fit 64 contacts.

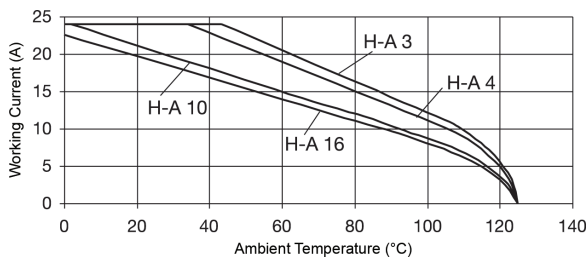
Technical Data

Number of Contacts:	3, 4, 10, 16, 32, 48, 64 (+PE)	Rated Current:	
Temperature Range:	-40°C to +100°C	- UL:	
- Short-term:	up to +125°C	- EPIC® HA 3/4:	10A
Pollution Level:	3	- EPIC® HA 10-64:	14A
Dimensioning Transient:	4 kV	- CSA:	
Mating Cycles:	- Per DIN EN 61984:2008 Service Life Test: Tested to 100 cycles and passed - Per Contact Thermal Test: Useful service up to 500 cycles is possible at rated voltage and current*	- EPIC® HA 3/4:	10A
Test Voltage:	4 kV	- EPIC® HA 10-64:	16A
Rated Voltage:		- IEC:	
- UL:	600V	- EPIC® HA 3/4:	10A
- CSA:	600V	- EPIC® HA 10-64:	16A
- IEC:		- SEV:	16A
- EPIC® HA 3/4:	400V	Wire Size:	
- EPIC® HA 10-64:	250V	- EPIC® HA 3/4:	
- SEV:	250V	- solid or stranded wire with ferrule:	20-14 AWG (0.5-2.5 mm ²)
		- EPIC® HA 10-64:	
		- solid or stranded wire with ferrule:	20-14 AWG (0.5-2.5 mm ²)
		- for stranded wire without ferrule:	18-14 AWG (0.75-2.5 mm ²) (requires insert with wire protection)
		Contact Material:	Silver-plated copper alloy
		Contact Resistance:	1.5-4 mΩ

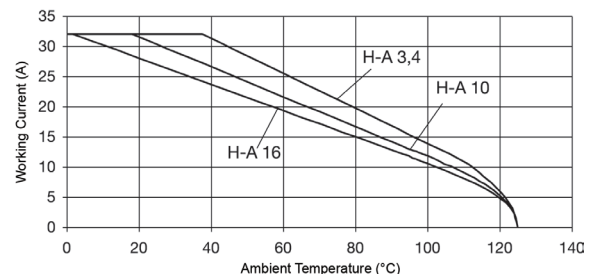
* In dry, non-conductive, non-corrosive environments when protected in a housing rated at least IP54 and disconnected for cycling and maintenance only.

EPIC® HA Inserts: Derating Curves

EPIC® HA Screw-Terminated
16 AWG (1.5 mm²)

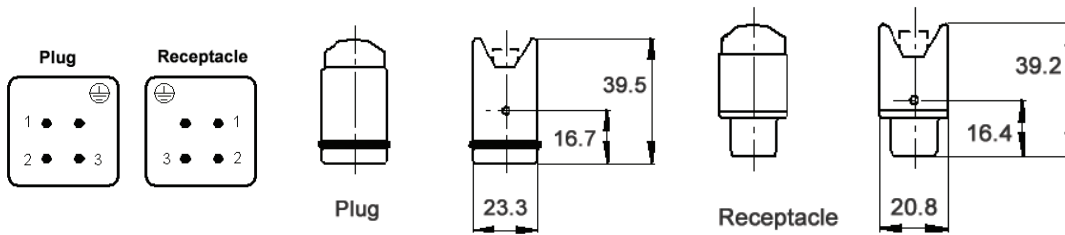


EPIC® HA Screw-Terminated
14 AWG (2.5 mm²)



EPIC® HA 3 Inserts Screw-Terminated

View from Cable Side



All dimensions are in mm.



Approvals



Complete the Installation



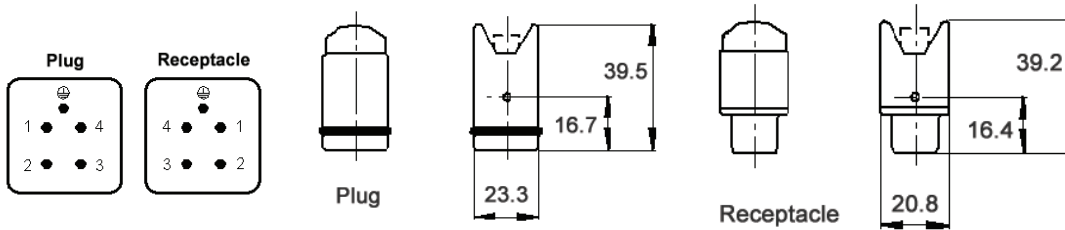
HA 3/4:
page 400



Coding Pin:
10451400

Description	Plug	Receptacle
Screw-Terminated	10420000	10421000

View from Cable Side



All dimensions are in mm.



Approvals



Complete the Installation



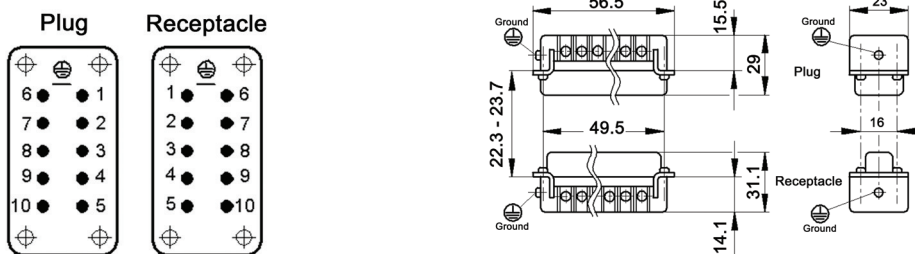
HA 3/4:
page 400



Coding Pin:
10451400

Description	Plug	Receptacle
Screw-Terminated	10431000	10432000

View from Cable Side



All dimensions are in mm.

EPIC® HA 10 Inserts Screw-Terminated



Approvals



Compatible Housing



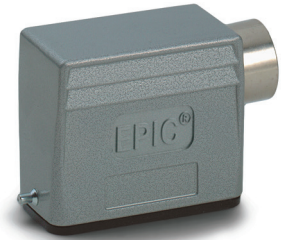
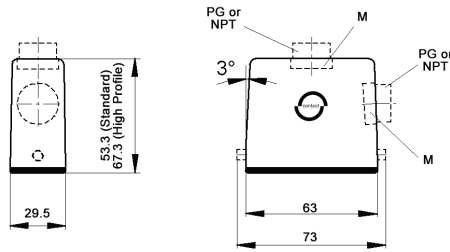
HA 10:
page 402

Description	Plug	Receptacle
Screw-Terminated with Wire Protection	10440100	10441100
Screw-Terminated without Wire Protection	10440000	10441000

Photographs are not to scale and are not true representations of the products in question.
For current information go to our website. If not otherwise specified, all values relating to the product are nominal values.

EPIC® HA 10 Standard & High Profile Hoods

Single Lever Bolts



All dimensions are in mm.

Technical Data

Specifications:	DIN 43652, DIN 50262 (metric)	Protection Class:	NEMA 4, NEMA 12, IP65
Temperature Range:	-40°C to +125°C	Material:	Powder-coated aluminum alloy

Size of Entry	PG		Part Number	Metric*	Complete the Installation: SKINTOP® Strain Relief, page 368				
	NPT	Metric			PG Nylon	PG Metal	Metric Nylon	Metric Metal	
Standard Profile: Top Entry									
13	1/2"	20	104460	104460NP	19446000	53015030	52015730	53111020	53112020
16	1/2"	25	104461	104461NP	19446100	53015040	52015740	53111030	53112030
Standard Profile: Side Entry									
16	1/2"	20	104450	104450NP	19445000	53015040	52015740	53111020	53112020
21	3/4"	25	104455	104455NP	19445500	53015050	52015750	53111030	53112030
High Profile: Top Entry									
16	1/2"	20	704602	704602NP	79460200	53015040	52015740	53111020	53112020
21	3/4"	25	704604	704604NP	79460400	53015040	52015740	53111020	53112020
High Profile: Side Entry									
16	1/2"	20	704622	704622NP	79462200	53015040	52015740	53111020	53112020
21	3/4"	25	704624	704624NP	79462400	53015050	52015750	53111030	53112030

* Top entry metric and high profile metric hoods do not come with a neck

Approvals



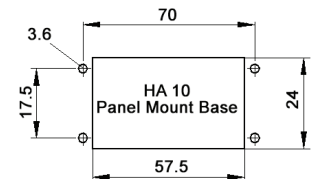
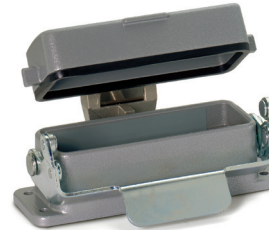
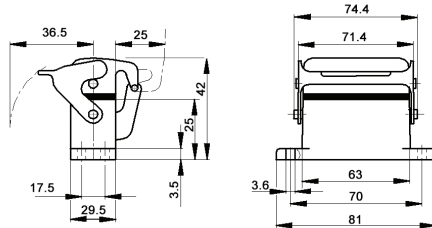
Complete the Installation



HA Dust Covers:
page 415

EPIC® HA 10 Panel Mount Bases

Single Lever



All dimensions are in mm.

Technical Data

Specifications:	DIN 43652, DIN 50262 (metric)	Protection Class:	NEMA 4, NEMA 12, IP65
Temperature Range:	-40°C to +125°C	Material:	Powder-coated aluminum alloy

Description	Part Number
Panel Mount Base	104420C0
Panel Mount Base with Dust Cover	704440C0

Complete the Installation



HA Dust Covers:
page 415

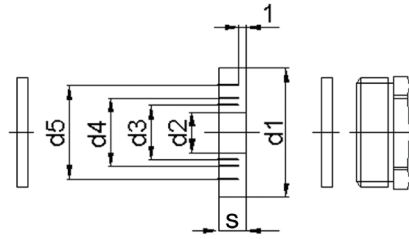
Approvals



Photographs are not to scale and are not true representations of the products in question. For current information go to our website. If not otherwise specified, all values relating to the product are nominal values.

EPIC® SM & SP Glands

EPIC® SM Glands



EPIC® SP Glands



Technical Data

Material:

- EPIC® SM glands: Nickel-plated brass
- EPIC® SP glands: Polystyrol

Temperature Range:

- EPIC® SM glands: -40°C to +125°C
- EPIC® SP glands: -20°C to +55°C

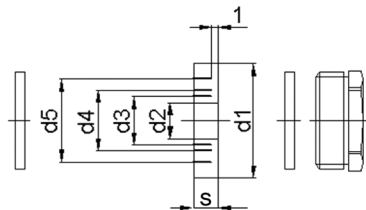
PG Parts

PG	Part Number		Gland Dimension (mm)										Wrench Size (mm)	
	EPIC® SM	EPIC® SP	d1	d2	d2 Cable OD	d3	d3 Cable OD	d4	d4 Cable OD	d5	d5 Cable OD	s	EPIC® SM	EPIC® SP
9	12954100	—	13.3	5	4-6	7.5	6.5-8.5	10	9-11	—	—	5.5	15	—
11	12954200	12957100	16.5	7.5	6.5-8.5	10	9-11	12.5	11.5-13.5	—	—	6	18	19
13	12954300	—	18.3	7.5	6.5-8.5	10	9-11	12.5	11.5-13.5	—	—	6	20	21
16	12954400	—	20.4	7.5	6.5-8.5	10	9-11	12.5	11.5-13.5	15	14-16	7	22	23
21	12954500	—	25.9	10	9-11	13	12-14	16	15-17	19	18-20	8	28	30
29	12954600	—	34.7	18	17-19	21	20-22	24	23-25	27	26-28	9.5	37	—
36	12954700	—	44.7	24	23-25	27	26-28	30	29-31	33	32-34	12	47	—
42	12954800	—	51.7	30	29-31	33	32-34	36	35-37	39	38-40	14	54	—

Metric Parts

Metric	Part Number	Gland Dimension (mm)										Wrench Size (mm)	Standard Pack	
		EPIC® SM-M	d1	d2	d2 Cable OD	d3	d3 Cable OD	d4	d4 Cable OD	d5	d5 Cable OD			s
12	71200000	10	5	4-6	—	—	—	—	—	—	—	5	12	5
20	71200200	17.6	4	3-5	7	6-8	10	9-11	13	12-14	6	20	5	5
25	71200300	22.6	8.5	7.5-9.5	11.5	10.5-12.5	14.5	13.5-15.5	17.5	16.5-18.5	7.5	25	5	5
32	71200400	29.6	16	15-17	19	18-20	22	21-23	25	24-26	9.5	32	5	5
40	71200500	37.6	23	22-24	26	25-27	29	23-28	32	31-33	12	40	5	5

EPIC® CM-M Glands



Technical Data

- Material:** Nickel-plated brass
- Temperature Range:** -40°C to +125°C
- Protection Class:** IP54 (DIN 46320)

Metric	Part Number	Gland Dimension (mm)										Wrench Size (mm)	Standard Pack	
		EPIC® CM-M	d1	d2	d2 Cable OD	d3	d3 Cable OD	d4	d4 Cable OD	d5	d5 Cable OD			s
20	71201200	17.6	4	3-5	7	6-8	10	9-11	13	12-14	6	23	5	5
25	71201300	22.6	8.5	7.5-9.5	11.5	10.5-12.5	14.5	13.5-15.5	17.5	16.5-18.5	7.5	28	5	5
32	71201400	29.6	16	15-17	19	18-20	22	21-23	25	24-26	9.5	36	5	5
40	71201500	37.6	23	22-24	26	25-27	29	23-28	32	31-33	12	46	5	5

Photographs are not to scale and are not true representations of the products in question.

For current information go to our website. If not otherwise specified, all values relating to the product are nominal values.