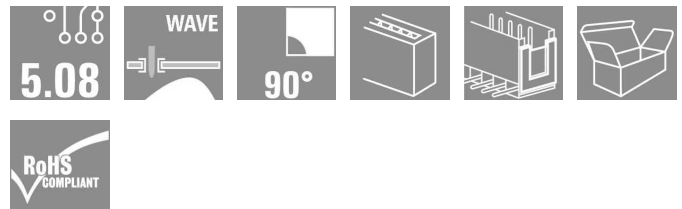
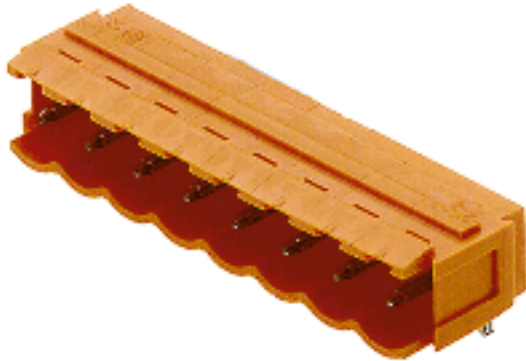


OMNIMATE Signal - series BL/SL 5.08 SL 5.08/02/90B 3.2SN OR BX

Weidmüller Interface GmbH & Co. KG
Klingenbergstraße 16
D-32758 Detmold
Germany
Fon: +49 5231 14-0
Fax: +49 5231 14-292083
www.weidmueller.com



Male connectors with 90° outlet direction. The solder pin length is optimised for wave flow soldering. The pin headers provide space for labelling and can be coded.

- 400 V (IEC) / 300 V (UL)
- 18 A (IEC) / 15 A (UL)

General ordering data

Type	SL 5.08/02/90B 3.2SN OR BX
Order No.	1510360000
Version	PCB plug-in connector, male header, Dovetails for fixing blocks, Solder connection, 5.08 mm, No. of poles: 2, Solder pin length (l): 3.2 mm, tinned, Orange, Box
GTIN (EAN)	4008190180188
Qty.	100 pc(s).
Product data	IEC: 400 V / 18 A UL: 300 V / 15 A
Packaging	Box

Creation date October 15, 2013 4:35:56 PM CEST

OMNIMATE Signal - series BL/SL 5.08
SL 5.08/02/90B 3.2SN OR BX

Weidmüller Interface GmbH & Co. KG
 Klingenbergstraße 16
 D-32758 Detmold
 Germany
 Fon: +49 5231 14-0
 Fax: +49 5231 14-292083
 www.weidmueller.com

Technical data
Dimensions and weights

Net weight 0.95 g

System parameters

Product family		Mounting onto the PCB	
OMNIMATE Signal - series BL/SL 5.08		Solder connection	
Pitch in mm (P)	5.08 mm	Pitch in inches (P)	0.2 inch
No. of poles	2	Solder pin length (l)	3.2 mm
Pin dimensions	d = 1.2 mm, Octagonal	Can be coded	Yes
Number of solder pins per pole	1	Solder eyelet hole diameter (D)	1.3 mm
Solder eyelet hole diameter tolerance (D)	+ 0,1 mm	L1 in mm	5.08 mm
L1 in inches	0.2 inch	Insulation resistance	> 10 ⁶ mΩ
Touch-safe protection acc. to DIN VDE 0470	IP20 plugged	Touch-safe protection acc. to DIN VDE 57 106	Safe from finger touch, plugged


Material data

Insulating material		Colour	
PBT		Orange	
Insulating material group	IIIa	UL 94 flammability rating	V-0
CTI	≥ 200	Contact material	CuSn
Contact surface	tinned	Max. relative humidity during storage	80 %


DIN IEC rating data

Rated current, min. no. of poles (Tu=20°C)		Rated current, max. no. of poles (Tu=20°C)	
18 A		14.5 A	
Rated current, number of poles (Tu=40°C), min		Rated current, number of poles (Tu=40°C), max.	
15 A		12 A	
Rated voltage for surge voltage class pollution degree III/3		Rated impulse voltage for surge voltage classcontamination degree III/3	
250 V		4 kV	
Rated voltage for surge voltage class pollution degree III/2		Rated impulse voltage for surge voltage classpollution degree III/2	
320 V		4 kV	
Rated voltage for surge voltage class pollution degree II/2		Rated impulse voltage for surge voltage classpollution degree II/2	
400 V		4 kV	
Short-time withstand current resistance 3 x 1s with 120 A			

CSA rating data

Institute (CSA)		Rated voltage (Use group B)	
		300 V	
Rated current (use group B)		Rated voltage (use group D)	
15 A		300 V	
Rated current (use group D)			
10 A			

UL 1059 rating data

Institute (UR)		Rated voltage (use group B)	
		300 V	
Rated current (use group B)		Rated voltage (use group D)	
15 A		300 V	
Rated current (use group D)			
10 A			

OMNIMATE Signal - series BL/SL 5.08 SL 5.08/02/90B 3.2SN OR BX

Weidmüller Interface GmbH & Co. KG
Klingenbergstraße 16
D-32758 Detmold
Germany
Fon: +49 5231 14-0
Fax: +49 5231 14-292083
www.weidmueller.com

Technical data

Classifications

ETIM 3.0	EC001284	UNSPSC	30-21-18-10
eClass 5.1	27-26-07-04	eClass 6.2	27-26-07-04
eClass 7.1	27-44-04-02		

Notes

- Notes
- Additional colours on request
 - Gold-plated contact surfaces on request
 - Rated current related to rated cross-section & min. No. of poles.
 - P on drawing = pitch
 - Rated data refer only to the component itself. Clearance and creepage distances to other components are to be designed in accordance with the relevant application standards.

Approvals

Approvals



ROHS

Conform

Downloads

CAD Library (P-CAD Format - ASCII) [SL.zip](#)

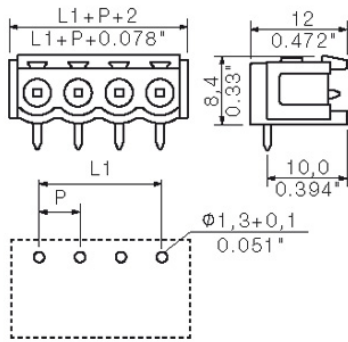
CAD Library (P-CAD Format - Standard) [SL.zip](#)

[3-D model](#)

**OMNIMATE Signal - series BL/SL 5.08
SL 5.08/02/90B 3.2SN OR BX**

Weidmüller Interface GmbH & Co. KG
Klingenbergstraße 16
D-32758 Detmold
Germany
Fon: +49 5231 14-0
Fax: +49 5231 14-292083
www.weidmueller.com

Drawings



**OMNIMATE Signal - series BL/SL 5.08
SL 5.08/02/90B 3.2SN OR BX**

Weidmüller Interface GmbH & Co. KG
Klingenbergstraße 16
D-32758 Detmold
Germany
Fon: +49 5231 14-0
Fax: +49 5231 14-292083
www.weidmueller.com

Mating connector (fully pluggable)
BLL 5.08/180B


Female header for PCB mounting. The solder pin length is optimised for wave flow soldering.

- 400 V (IEC) / 300 V (UL)
- 23 A (IEC) / 15 A (UL)

General ordering data

Type	Order No.	Version	GTIN (EAN)	Qty.	Product data	Packaging
BLL 5.08/02/180B 3.2SN OR BX	1682730000	PCB plug-in connector, female header, Dovetails for fixing blocks, Solder connection, 5.08 mm, No. of poles: 2, 180°, Solder pin length (l): 3.2 mm, tinned, Orange, Box	4008190474492	150 pc(s).	IEC: 400 V / 23 A UL: 300 V / 15 A	Box

BLZF 5.08/270B


Female plugs with tension-clamp wire connection system. The female plugs provide space for labelling and can be coded.

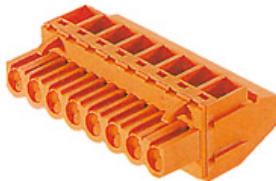
- 0.2 - 2.5 mm² (IEC) / 26 - 12 AWG (UL)
- 400 V (IEC) / 300 V (UL)
- 16.5 A (IEC) / 10 A (UL)

General ordering data

Type	Order No.	Version	GTIN (EAN)	Qty.	Product data	Packaging
BLZF 5.08/02/270B SN OR BX	1672400000	PCB plug-in connector, female plug, 5.08 mm, No. of poles: 2, 270°, Tension clamp connection, Clamping range, rated connection, max.: 3.31 mm ² , Box	4008190434113	150 pc(s).	IEC: 400 V / 16.5 A / 0.2 - 2.5 mm ² UL: 300 V / 10 A / AWG 26 - AWG 12	Box
BLZF 5.08/02/270B SN BK BX	1672630000	PCB plug-in connector, female plug, 5.08 mm, No. of poles: 2, 270°, Tension clamp connection, Clamping range, rated connection, max.: 3.31 mm ² , Box	4008190434342	150 pc(s).	IEC: 400 V / 16.5 A / 0.2 - 2.5 mm ² UL: 300 V / 10 A / AWG 26 - AWG 12	Box

**OMNIMATE Signal - series BL/SL 5.08
SL 5.08/02/90B 3.2SN OR BX**

Weidmüller Interface GmbH & Co. KG
Klingenbergstraße 16
D-32758 Detmold
Germany
Fon: +49 5231 14-0
Fax: +49 5231 14-292083
www.weidmueller.com

Mating connector (fully pluggable)
BLZ 5.08/90B


Female plugs with clamping-yoke screw connection. The female plugs provide space for labelling and can be coded.

- 0.2 - 2.5 mm² (IEC) / 26 - 12 AWG (UL)
- 400 V (IEC) / 300 V (UL)
- 15 A (IEC) / 10 A (UL)

General ordering data

Type	Order No.	Version	GTIN (EAN)	Qty.	Product data	Packaging
BLZ 5.08/02/90B SN OR BX	1555060000	PCB plug-in connector, female plug, 5.08 mm, No. of poles: 2, 90°, Clamping yoke connection, Clamping range, rated connection, max.: 3.31 mm ² , Box	4008190189563	150 pc(s).	IEC: 400 V / 15 A / 0.2 - 2.5 mm ² UL: 300 V / 10 A / AWG 26 - AWG 12	Box

BLZF 5.08/90B


Female plugs with tension-clamp wire connection system. The female plugs provide space for labelling and can be coded.

- 0.2 - 2.5 mm² (IEC) / 26 - 12 AWG (UL)
- 400 V (IEC) / 300 V (UL)
- 16.5 A (IEC) / 10 A (UL)

General ordering data

Type	Order No.	Version	GTIN (EAN)	Qty.	Product data	Packaging
BLZF 5.08/02/90B SN BK BX	1671480000	PCB plug-in connector, female plug, 5.08 mm, No. of poles: 2, 90°, Tension clamp connection, Clamping range, rated connection, max.: 3.31 mm ² , Box	4008190433185	150 pc(s).	IEC: 400 V / 16.5 A / 0.2 - 2.5 mm ² UL: 300 V / 10 A / AWG 26 - AWG 12	Box
BLZF 5.08/02/90B SN OR BX	1671250000	PCB plug-in connector, female plug, 5.08 mm, No. of poles: 2, 90°, Tension clamp connection, Clamping range, rated connection, max.: 3.31 mm ² , Box	4008190432959	150 pc(s).	IEC: 400 V / 16.5 A / 0.2 - 2.5 mm ² UL: 300 V / 10 A / AWG 26 - AWG 12	Box

**OMNIMATE Signal - series BL/SL 5.08
SL 5.08/02/90B 3.2SN OR BX**

Weidmüller Interface GmbH & Co. KG
Klingenbergstraße 16
D-32758 Detmold
Germany
Fon: +49 5231 14-0
Fax: +49 5231 14-292083
www.weidmueller.com

Mating connector (fully pluggable)
ZZ_Varianten


Female plugs with clamping-yoke screw for wire connection with straight (180°) outlet direction. The female plugs provide space for labelling and can be coded.

- 0.2 - 2.5 mm² (IEC) / 26 - 12 AWG (UL)
- 400 V (IEC) / 300 V (UL)
- 19 A (IEC) / 15 A (UL)

General ordering data

Type	Order No.	Version	GTIN (EAN)	Qty.	Product data	Packaging
BLZ 5.08/02/180B SN DKGX BX	1528750000	PCB plug-in connector, female plug, 5.08 mm, No. of poles: 2, 180°, Clamping yoke connection, Clamping range, rated connection, max.: 3.31 mm ² , Box	4008190290184	100 pc(s).	IEC: 400 V / 19 A / 0.2 - 2.5 mm ² UL: 300 V / 15 A / AWG 26 - AWG 12	Box

BLDT 5.08B


Female plugs with two clamping-yoke screw connections per pole for wire connections with 90° and 270° outlet directions. The female plugs provide space for labelling and can be coded.

- 0.2 - 2.5 mm² (IEC) / 26 - 12 AWG (UL)
- 400 V (IEC) / 300 V (UL)
- 14 A (IEC) / 10 A (UL)

General ordering data

Type	Order No.	Version	GTIN (EAN)	Qty.	Product data	Packaging
BLDT 5.08/02/-B SN OR BX	1651740000	PCB plug-in connector, female plug, 5.08 mm, No. of poles: 2, 180°, TOP connection, Clamping range, rated connection, max.: 3.31 mm ² , Box	4008190400422	100 pc(s).	IEC: 400 V / 14 A / 0.2 - 2.5 mm ² UL: 300 V / 10 A / AWG 26 - AWG 12	Box
BLDT 5.08/02/-B SN BK BX	1673780000	PCB plug-in connector, female plug, 5.08 mm, No. of poles: 2, 180°, TOP connection, Clamping range, rated connection, max.: 3.31 mm ² , Box	4008190435509	100 pc(s).	IEC: 400 V / 14 A / 0.2 - 2.5 mm ² UL: 300 V / 10 A / AWG 26 - AWG 12	Box

**OMNIMATE Signal - series BL/SL 5.08
SL 5.08/02/90B 3.2SN OR BX**

Weidmüller Interface GmbH & Co. KG
Klingenbergstraße 16
D-32758 Detmold
Germany
Fon: +49 5231 14-0
Fax: +49 5231 14-292083
www.weidmueller.com

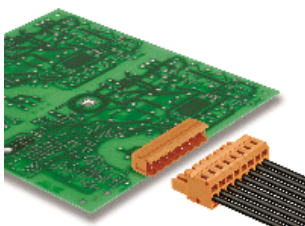
Mating connector (fully pluggable)
BLZ 5.08/225B


Female plugs with clamping-yoke screw for wire connection with 225° outlet direction. The female plugs provide space for labelling and can be coded.

- 0.2 - 2.5 mm² (IEC) / 26 - 12 AWG (UL)
- 400 V (IEC) / 300 V (UL)
- 16.5 A (IEC) / 10 A (UL)

General ordering data

Type	Order No.	Version	GTIN (EAN)	Qty.	Product data	Packaging
BLZ 5.08/02/225B SN OR BX	1742100000	PCB plug-in connector, female plug, 5.08 mm, No. of poles: 2, 225°, Clamping yoke connection, Clamping range, rated connection, max.: 3.31 mm ² , Box	4008190243388	150 pc(s).	IEC: 400 V / 16.5 A / 0.2 - 2.5 mm ² UL: 300 V / 10 A / AWG 26 - AWG 12	Box
BLZ 5.08/02/225B SN BK BX	1742330000	PCB plug-in connector, female plug, 5.08 mm, No. of poles: 2, 225°, Clamping yoke connection, Clamping range, rated connection, max.: 3.31 mm ² , Box	4032248049769	150 pc(s).	IEC: 400 V / 16.5 A / 0.2 - 2.5 mm ² UL: 300 V / 10 A / AWG 26 - AWG 12	Box

BLZF 5.08/180B


Female plugs with tension-clamp wire connection system, straight 180° outlet direction. The female plugs provide space for labelling and can be coded.

- 0.2 - 2.5 mm² (IEC) / 26 - 12 AWG (UL)
- 400 V (IEC) / 300 V (UL)
- 17 A (IEC) / 15 A (UL)

General ordering data

Type	Order No.	Version	GTIN (EAN)	Qty.	Product data	Packaging
BLZF 5.08/02/180B SN OR BX	1708300000	PCB plug-in connector, female plug, 5.08 mm, No. of poles: 2, 180°, Tension clamp connection, Clamping range, rated connection, max.: 3.31 mm ² , Box	4008190317768	150 pc(s).	IEC: 400 V / 17 A / 0.2 - 2.5 mm ² UL: 300 V / 15 A / AWG 26 - AWG 12	Box

OMNIMATE Signal - series BL/SL 5.08 SL 5.08/02/90B 3.2SN OR BX

Weidmüller Interface GmbH & Co. KG
Klingenbergstraße 16
D-32758 Detmold
Germany
Fon: +49 5231 14-0
Fax: +49 5231 14-292083
www.weidmueller.com

Mating connector (fully pluggable)

BLZ 5.08/270B



Female plugs with clamping-yoke screw connection. The female plugs provide space for labelling and can be coded.

- 0.2 - 2.5 mm² (IEC) / 26 - 12 AWG (UL)
- 400 V (IEC) / 300 V (UL)
- 15 A (IEC) / 10 A (UL)

General ordering data

Type	Order No.	Version	GTIN (EAN)	Qty.	Product data	Packaging
BLZ 5.08/02/270B SN BK BX	1559610000	PCB plug-in connector, female plug, 5.08 mm, No. of poles: 2, 270°, Clamping yoke connection, Clamping range, rated connection, max.: 3.31 mm ² , Box	4008190269654	150 pc(s).	IEC: 400 V / 15 A / 0.2 - 2.5 mm ² UL: 300 V / 10 A / AWG 26 - AWG 12	Box
BLZ 5.08/02/270B SN OR BX	1559660000	PCB plug-in connector, female plug, 5.08 mm, No. of poles: 2, 270°, Clamping yoke connection, Clamping range, rated connection, max.: 3.31 mm ² , Box	4008190086176	150 pc(s).	IEC: 400 V / 15 A / 0.2 - 2.5 mm ² UL: 300 V / 10 A / AWG 26 - AWG 12	Box

BLZ 5.08/180B



Female plugs with clamping-yoke screw for wire connection with straight (180°) outlet direction. The female plugs provide space for labelling and can be coded.

- 0.2 - 2.5 mm² (IEC) / 26 - 12 AWG (UL)
- 400 V (IEC) / 300 V (UL)
- 19 A (IEC) / 15 A (UL)

General ordering data

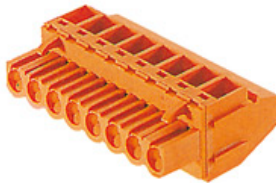
Type	Order No.	Version	GTIN (EAN)	Qty.	Product data	Packaging
BLZ 5.08/02/180B SN BK BX	1528710000	PCB plug-in connector, female plug, 5.08 mm, No. of poles: 2, 180°, Clamping yoke connection, Clamping range, rated connection, max.: 3.31 mm ² , Box	4008190037819	100 pc(s).	IEC: 400 V / 19 A / 0.2 - 2.5 mm ² UL: 300 V / 15 A / AWG 26 - AWG 12	Box
BLZ 5.08/02/180B SN OR BX	1528760000	PCB plug-in connector, female plug, 5.08 mm, No. of poles: 2, 180°, Clamping yoke connection, Clamping	4008190041540	100 pc(s).	IEC: 400 V / 19 A / 0.2 - 2.5 mm ² UL: 300 V / 15 A / AWG 26 - AWG 12	Box

**OMNIMATE Signal - series BL/SL 5.08
SL 5.08/02/90B 3.2SN OR BX**

Weidmüller Interface GmbH & Co. KG
Klingenbergstraße 16
D-32758 Detmold
Germany
Fon: +49 5231 14-0
Fax: +49 5231 14-292083
www.weidmueller.com

Mating connector (fully pluggable)

range, rated connection,
max.: 3.31 mm², Box

BLZ 5.00/90B


Female plugs with clamping-yoke screw for wire connection with 90° outlet direction. The female plugs provide space for labelling and can be coded.

- 0.20 - 2.5 mm² (IEC) / 26 - 12 AWG (UL)
- 400 V (IEC) / 300 V (UL)
- 15 A (IEC) / 10 A (UL)

General ordering data

Type	Order No.	Version	GTIN (EAN)	Qty.	Product data	Packaging
BLZ 5.00/02/90B SN OR BX	1637120000	PCB plug-in connector, female plug, 5.00 mm, No. of poles: 2, 90°, Clamping yoke connection, Clamping range, rated connection, max.: 3.31 mm ² , Box	4008190274368	150 pc(s).	IEC: 400 V / 15 A / 0.5 - 2.5 mm ² UL: 300 V / 10 A / AWG 26 - AWG 12	Box

BLZP 5.08/225B SN


Clamping-yoke wire connection with right-angled (90° or 270°) or angled (225°) outlet direction. The female plugs provide space for labelling and can be coded. Can be fastened with flange or release latch. They also feature the integrated plus/minus screw, protection from under insertion of wire, and are delivered with open clamping yoke.

- 0.2 - 2.5 mm² (IEC) / 26-12 AWG (UL)
- 400 V (IEC) / 300 V (UL)
- 17.5 A (IEC) / 10 A (UL)

General ordering data

Type	Order No.	Version	GTIN (EAN)	Qty.	Product data	Packaging
BLZP 5.08HC/02/225B SN BK BX	1945980000	PCB plug-in connector, female plug, 5.08 mm, No. of poles: 2, 225°, Clamping yoke connection, Clamping range, rated connection, max.: 4 mm ² , Box	4032248621507	150 pc(s).	IEC: 400 V / 17.5 A / 0.2 - 4 mm ² UL: 300 V / 15 A / AWG 30 - AWG 12	Box
BLZP 5.08HC/02/225B SN OR BX	1945750000	PCB plug-in connector, female plug, 5.08 mm, No. of poles: 2, 225°, Clamping yoke connection, Clamping range, rated connection, max.: 4 mm ² , Box	4032248621095	150 pc(s).	IEC: 400 V / 17.5 A / 0.2 - 4 mm ² UL: 300 V / 15 A / AWG 30 - AWG 12	Box

**OMNIMATE Signal - series BL/SL 5.08
SL 5.08/02/90B 3.2SN OR BX**

Weidmüller Interface GmbH & Co. KG
Klingenbergstraße 16
D-32758 Detmold
Germany
Fon: +49 5231 14-0
Fax: +49 5231 14-292083
www.weidmueller.com

Mating connector (fully pluggable)
BLZ 5.00/270B


Female plugs with clamping-yoke screw for wire connection with 270° outlet direction. The female plugs provide space for labelling and can be coded.

- 0.20 - 2.5 mm² (IEC) / 26 - 12 AWG (UL)
- 400 V (IEC) / 300 V (UL)
- 15 A (IEC) / 10 A (UL)

General ordering data

Type	Order No.	Version	GTIN (EAN)	Qty.	Product data	Packaging
BLZ 5.00/02/270B SN BK BX	1638270000	PCB plug-in connector, female plug, 5.00 mm, No. of poles: 2, 270°, Clamping yoke connection, Clamping range, rated connection, max.: 3.31 mm ² , Box	4008190275532	150 pc(s).	IEC: 400 V / 15 A / 0.5 - 2.5 mm ² UL: 300 V / 10 A / AWG 26 - AWG 12	Box
BLZ 5.00/02/270B SN OR BX	1638040000	PCB plug-in connector, female plug, 5.00 mm, No. of poles: 2, 270°, Clamping yoke connection, Clamping range, rated connection, max.: 3.31 mm ² , Box	4008190275303	150 pc(s).	IEC: 400 V / 15 A / 0.5 - 2.5 mm ² UL: 300 V / 10 A / AWG 26 - AWG 12	Box

OMNIMATE Signal - series BL/SL 5.08 SL 5.08/02/90B 3.2SN OR BX

Weidmüller Interface GmbH & Co. KG
Klingenbergstraße 16
D-32758 Detmold
Germany
Fon: +49 5231 14-0
Fax: +49 5231 14-292083
www.weidmueller.com

Mating connector (conditionally pluggable)

BLF 5.00/90LH SN



Just as reliable as the tried-and-tested original, with innovation in detail: the BLF 5.00 – the PUSH-IN version of the BLZ 5.00 female plug – features a new connection system and a more compact design. Weidmüller's innovative PUSH-IN spring connection features a trend-setting, tool-free wire connection system that is simple to operate. In terms of versatility, the BLF 5.00 offers just as much as the older versions:

- The choice of three wire outlet directions offers you proven design flexibility for your applications.
- Four flange variations, including the patented release latch, so you can design the interlock based on the requirements of the user.

General ordering data

Type	Order No.	Version	GTIN (EAN)	Qty.	Product data	Packaging
BLF 5.00HC/02/90LH SN OR BX	1981370000	PCB plug-in connector, female plug, 5.00 mm, No. of poles: 2, 90°, PUSH IN spring connection, Clamping range, rated connection, max.: 3.31 mm ² , Box	4032248676675	90 pc(s).	IEC: 400 V / 20 A / 0.2 - 2.5 mm ² UL: 300 V / 10 A / AWG 12 - AWG 26	Box
BLF 5.00HC/02/90LH SN BK BX	1979980000	PCB plug-in connector, female plug, 5.00 mm, No. of poles: 2, 90°, PUSH IN spring connection, Clamping range, rated connection, max.: 3.31 mm ² , Box	4032248675043	90 pc(s).	IEC: 400 V / 20 A / 0.2 - 2.5 mm ² UL: 300 V / 10 A / AWG 12 - AWG 26	Box

BLZP 5.00/270F SN



Female plugs with clamping-yoke screw for wire connection and a right-angle (90° or 270°) outlet direction. The female plugs provide space for labelling and can be coded. Can be fastened with flange or release latch. They feature an integrated plus/minus screw, protection against false insertion under clamping yoke. They are delivered with an opened clamping yoke.

- 0.2 – 2.5 mm² (IEC) / 26-12 AWG (UL)
- 400 V (IEC) / 300 V (UL)
- 15 A (IEC) / 10 A (UL)

General ordering data

Type	Order No.	Version	GTIN (EAN)	Qty.	Product data	Packaging
BLZP 5.00/02/270F SN OR BX	1960460000	PCB plug-in connector, female plug, 5.00 mm, No. of poles: 2, 90°, Clamping yoke connection, Clamping	4032248639328	90 pc(s).	IEC: 400 V / 15.5 A / 0.2 - 4 mm ² UL: 300 V / 15 A / AWG 30 - AWG 12	Box

**OMNIMATE Signal - series BL/SL 5.08
SL 5.08/02/90B 3.2SN OR BX**

Weidmüller Interface GmbH & Co. KG
Klingenbergstraße 16
D-32758 Detmold
Germany
Fon: +49 5231 14-0
Fax: +49 5231 14-292083
www.weidmueller.com

Mating connector (conditionally pluggable)

		range, rated connection, max.: 4 mm ² , Box		
BLZP	1960730000	PCB plug-in connector, female plug, 5.00 mm, No. of poles: 2, 90°, Clamping yoke connection, Clamping range, rated connection, max.: 4 mm ² , Box	4032248639724 90 pc(s).	IEC: 400 V / 15.5 A / 0.2 - 4 mm ² Box UL: 300 V / 15 A / AWG 30 - AWG 12
5.00/02/270F				
SN BK BX				

BLF 5.08/90F SN


Just as reliable as the tried-and-tested original, with innovation in detail: the BLF 5.08, PUSH-IN version of the BLZ 5.08 female header, features a new connection system and a more compact design. Weidmüller innovative PUSH-IN spring connection features a trend-setting, tool-free wire connection system that is simple to operate. In terms of versatility, the BLF 5.08 offers just as much as the older versions:

- The choice of three wire outlet directions offers you proven design flexibility for your applications.
- Four flange variations, including the patented release latch, so you can design the interlock based on the requirements of the user.
- Use the BLF 5.08 and SL 5.08HC plug combination in order to reach the max. rated specifications.

General ordering data

Type	Order No.	Version	GTIN (EAN)	Qty.	Product data	Packaging
BLF	1000220001	PCB plug-in connector, female plug, 5.08 mm, No. of poles: 2, 90°, PUSH IN spring connection, Clamping range, rated connection, max.: 3.31 mm ² , Box	4032248690183 90 pc(s).		IEC: 400 V / 24 A / 0.2 - 2.5 mm ² UL: 300 V / 18.5 A / AWG 26 - AWG 12	Box
5.08HC/02/90F						
SN BK BX						
BLF	1002090000	PCB plug-in connector, female plug, 5.08 mm, No. of poles: 2, 90°, PUSH IN spring connection, Clamping range, rated connection, max.: 3.31 mm ² , Box	4032248694044 90 pc(s).		IEC: 400 V / 24 A / 0.2 - 2.5 mm ² UL: 300 V / 18.5 A / AWG 26 - AWG 12	Box
5.08HC/02/90F						
SN OR BX						

**OMNIMATE Signal - series BL/SL 5.08
SL 5.08/02/90B 3.2SN OR BX**

Weidmüller Interface GmbH & Co. KG
Klingenbergstraße 16
D-32758 Detmold
Germany
Fon: +49 5231 14-0
Fax: +49 5231 14-292083
www.weidmueller.com

Mating connector (conditionally pluggable)
BLZP 5.00/90 SN


Female plugs with clamping-yoke screw for wire connection and a right-angle (90° or 270°) outlet direction. The female plugs provide space for labelling and can be coded. Can be fastened with flange or release latch. They feature an integrated plus/minus screw, protection against false insertion under clamping yoke. They are delivered with an opened clamping yoke.

- 0.2 – 2.5 mm² (IEC) / 26-12 AWG (UL)
- 400 V (IEC) / 300 V (UL)
- 15 A (IEC) / 10 A (UL)

General ordering data

Type	Order No.	Version	GTIN (EAN)	Qty.	Product data	Packaging
BLZP 5.00/02/90 SN OR BX	1958300000	PCB plug-in connector, female plug, 5.00 mm, No. of poles: 2, 90°, Clamping yoke connection, Clamping range, rated connection, max.: 4 mm ² , Box	4032248637164	180 pc(s).	IEC: 400 V / 15.5 A / 0.2 - 4 mm ² UL: 300 V / 15 A / AWG 30 - AWG 12	Box
BLZP 5.00/02/90 SN BK BX	1958650000	PCB plug-in connector, female plug, 5.00 mm, No. of poles: 2, 90°, Clamping yoke connection, Clamping range, rated connection, max.: 4 mm ² , Box	4032248637386	180 pc(s).	IEC: 400 V / 15.5 A / 0.2 - 4 mm ² UL: 300 V / 15 A / AWG 30 - AWG 12	Box

BLZF 5.08/180LH


Female plugs with the time-saving tension-clamp wire connection system, with straight outlet direction and release lever or release latch mechanism. The female plugs provide space for labelling and can be coded.

- 0.2 - 2.5 mm² (IEC) / 26 - 12 AWG (UL)
- 400 V (IEC) / 300 V (UL)
- 17 A (IEC) / 15 A (UL)

General ordering data

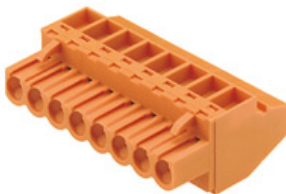
Type	Order No.	Version	GTIN (EAN)	Qty.	Product data	Packaging
BLZF 5.08/02/180LH SN OR BX	1895720000	PCB plug-in connector, female plug, 5.08 mm, No. of poles: 2, 180°, Tension clamp connection, Clamping range, rated connection, max.: 3.31 mm ² , Box	4032248510443	90 pc(s).	IEC: 400 V / 17 A / 0.2 - 2.5 mm ² UL: 300 V / 15 A / AWG 26 - AWG 12	Box

OMNIMATE Signal - series BL/SL 5.08 SL 5.08/02/90B 3.2SN OR BX

Weidmüller Interface GmbH & Co. KG
Klingenbergstraße 16
D-32758 Detmold
Germany
Fon: +49 5231 14-0
Fax: +49 5231 14-292083
www.weidmueller.com

Mating connector (conditionally pluggable)

BLZ 5.00/90



Female plugs with clamping-yoke screw for wire connection with 90° outlet direction. The female plugs provide space for labelling and can be coded.

- 0.20 - 2.5 mm² (IEC) / 26 - 12 AWG (UL)
- 400 V (IEC) / 300 V (UL)
- 15 A (IEC) / 10 A (UL)

General ordering data

Type	Order No.	Version	GTIN (EAN)	Qty.	Product data	Packaging
BLZ 5.00/02/90 SN BK BX	1636890000	PCB plug-in connector, female plug, 5.00 mm, No. of poles: 2, 90°, Clamping yoke connection, Clamping range, rated connection, max.: 3.31 mm ² , Box	4008190274139	180 pc(s).	IEC: 400 V / 15 A / 0.5 - 2.5 mm ² UL: 300 V / 10 A / AWG 26 - AWG 12	Box
BLZ 5.00/02/90 SN OR BX	1635940000	PCB plug-in connector, female plug, 5.00 mm, No. of poles: 2, 90°, Clamping yoke connection, Clamping range, rated connection, max.: 3.31 mm ² , Box	4008190265854	180 pc(s).	IEC: 400 V / 15 A / 0.5 - 2.5 mm ² UL: 300 V / 10 A / AWG 26 - AWG 12	Box

BLF 5.08/90 SN



Just as reliable as the tried-and-tested original, with innovation in detail: the BLF 5.08, PUSH-IN version of the BLZ 5.08 female header, features a new connection system and a more compact design. Weidmüller innovative PUSH-IN spring connection features a trend-setting, tool-free wire connection system that is simple to operate. In terms of versatility, the BLF 5.08 offers just as much as the older versions:

- The choice of three wire outlet directions offers you proven design flexibility for your applications.
- Four flange variations, including the patented release latch, so you can design the interlock based on the requirements of the user.
- Use the BLF 5.08 and SL 5.08HC plug combination in order to reach the max. rated specifications.

General ordering data

Type	Order No.	Version	GTIN (EAN)	Qty.	Product data	Packaging
BLF 5.08HC/02/90 SN BK BX	1000030001	PCB plug-in connector, female plug, 5.08 mm, No. of poles: 2, 90°, PUSH IN spring connection, Clamping range, rated	4032248689965	180 pc(s).	IEC: 400 V / 24 A / 0.2 - 2.5 mm ² UL: 300 V / 18.5 A / AWG 26 - AWG 12	Box

OMNIMATE Signal - series BL/SL 5.08 SL 5.08/02/90B 3.2SN OR BX

Weidmüller Interface GmbH & Co. KG
Klingenbergstraße 16
D-32758 Detmold
Germany
Fon: +49 5231 14-0
Fax: +49 5231 14-292083
www.weidmueller.com

Mating connector (conditionally pluggable)

		connection, max.: 3.31 mm ² , Box			
BLF	1001530000	PCB plug-in connector, female plug, 5.08 mm, No. of poles: 2, 90°, PUSH IN spring connection, Clamping range, rated connection, max.: 3.31 mm ² , Box	4032248693337 180 pc(s).	IEC: 400 V / 24 A / 0.2 - 2.5 mm ² UL: 300 V / 18.5 A / AWG 26 - AWG 12	Box
5.08HC/02/90 SN OR BX					

BLZF 5.08/180LR



Female plugs with tension-clamp wire connection system, straight 180° outlet direction. The female plugs provide space for labelling and can be coded.

- 0.2 - 2.5 mm² (IEC) / 26 - 12 AWG (UL)
- 400 V (IEC) / 300 V (UL)
- 17 A (IEC) / 15 A (UL)

General ordering data

Type	Order No.	Version	GTIN (EAN)	Qty.	Product data	Packaging
BLZF	1851410000	PCB plug-in connector, female plug, 5.08 mm, No. of poles: 2, 180°, Tension clamp connection, Clamping range, rated connection, max.: 3.31 mm ² , Box	4032248382781 90 pc(s).		IEC: 400 V / 17 A / 0.2 - 2.5 mm ² UL: 300 V / 15 A / AWG 26 - AWG 12	Box
5.08/02/180LR SN OR BX						

BLZP 5.08/180LH SN



Female plugs with clamping-yoke screw for wire connection with straight (180°) outlet direction. The female plugs provide space for labelling and can be coded. Can be fastened with flange or release latch. They also feature the integrated plus/minus screw, protection from under insertion of wire, and are delivered with open clamping yoke.

- 0.2 - 2.5 mm² (IEC) / 26-12 AWG (UL)
- 400 V (IEC) / 300 V (UL)
- 19 A (IEC) / 15 A (UL)

General ordering data

Type	Order No.	Version	GTIN (EAN)	Qty.	Product data	Packaging
BLZP	1945520000	PCB plug-in connector, female plug, 5.08 mm, No. of poles: 2, 180°, Clamping yoke connection, Clamping range, rated connection, max.: 4 mm ² , Box	4032248620692 90 pc(s).		IEC: 400 V / 19 A / 0.2 - 4 mm ² UL: 300 V / 15 A / AWG 30 - AWG 12	Box
5.08/02/180LH SN BK BX						

**OMNIMATE Signal - series BL/SL 5.08
SL 5.08/02/90B 3.2SN OR BX**

Weidmüller Interface GmbH & Co. KG
 Klingenbergstraße 16
 D-32758 Detmold
 Germany
 Fon: +49 5231 14-0
 Fax: +49 5231 14-292083
 www.weidmueller.com

Mating connector (conditionally pluggable)

BLZP 5.08/02/180LH SN OR BX	1945290000	PCB plug-in connector, female plug, 5.08 mm, No. of poles: 2, 180°, Clamping yoke connection, Clamping range, rated connection, max.: 4 mm ² , Box	4032248619863 90 pc(s).	IEC: 400 V / 19 A / 0.2 - 4 mm ² UL: 300 V / 15 A / AWG 30 - AWG 12	Box
-----------------------------------	----------------------------	--	-------------------------	---	-----

BLZ 5.08/225


Female plugs with clamping-yoke screw for wire connection with 225° outlet direction. The female plugs provide space for labelling and can be coded.

- 0.2 - 2.5 mm² (IEC) / 26 - 12 AWG (UL)
- 400 V (IEC) / 300 V (UL)
- 16.5 A (IEC) / 10 A (UL)

General ordering data

Type	Order No.	Version	GTIN (EAN)	Qty.	Product data	Packaging
BLZ 5.08/02/225 SN OR BX	1741640000	PCB plug-in connector, female plug, 5.08 mm, No. of poles: 2, 225°, Clamping yoke connection, Clamping range, rated connection, max.: 3.31 mm ² , Box	4008190206147 180 pc(s).		IEC: 400 V / 16.5 A / 0.2 - 2.5 mm ² UL: 300 V / 10 A / AWG 26 - AWG 12	Box
BLZ 5.08/02/225 SN BK BX	1741870000	PCB plug-in connector, female plug, 5.08 mm, No. of poles: 2, 225°, Clamping yoke connection, Clamping range, rated connection, max.: 3.31 mm ² , Box	4008190248727 180 pc(s).		IEC: 400 V / 16.5 A / 0.2 - 2.5 mm ² UL: 300 V / 10 A / AWG 26 - AWG 12	Box

BLZP 5.00/270 SN


Female plugs with clamping-yoke screw for wire connection and a right-angle (90° or 270°) outlet direction. The female plugs provide space for labelling and can be coded. Can be fastened with flange or release latch. They feature an integrated plus/minus screw, protection against false insertion under clamping yoke. They are delivered with an opened clamping yoke.

- 0.2 - 2.5 mm² (IEC) / 26-12 AWG (UL)
- 400 V (IEC) / 300 V (UL)
- 15 A (IEC) / 10 A (UL)

General ordering data

Type	Order No.	Version	GTIN (EAN)	Qty.	Product data	Packaging
BLZP 5.00/02/270 SN BK BX	1959100000	PCB plug-in connector, female plug, 5.00 mm, No. of poles: 2, 90°, Clamping yoke connection, Clamping	4032248638031 180 pc(s).		IEC: 400 V / 15.5 A / 0.2 - 4 mm ² UL: 300 V / 15 A / AWG 30 - AWG 12	Box

Creation date October 15, 2013 4:35:56 PM CEST

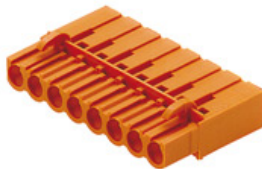
**OMNIMATE Signal - series BL/SL 5.08
SL 5.08/02/90B 3.2SN OR BX**

Weidmüller Interface GmbH & Co. KG
Klingenbergstraße 16
D-32758 Detmold
Germany
Fon: +49 5231 14-0
Fax: +49 5231 14-292083
www.weidmueller.com

Mating connector (conditionally pluggable)

BLZP	1958870000	range, rated connection, max.: 4 mm ² , Box	4032248637706 180 pc(s).	IEC: 400 V / 15.5 A / 0.2 - 4 mm ² UL: 300 V / 15 A / AWG 30 - AWG 12	Box
5.00/02/270		PCB plug-in connector, female plug, 5.00 mm, No. of poles: 2, 90°, Clamping yoke connection, Clamping range, rated connection, max.: 4 mm ² , Box			
SN OR BX					

BLC 5.08R



Female plugs with crimp wire connection system. The female plugs provide space for labelling and can be coded.

- 0.25 - 2.5 mm² (IEC) / 26 - 14 AWG (UL)
- 400 V (IEC) / 300 V (UL)
- 21 A (IEC) / 10 A (UL)

General ordering data

Type	Order No.	Version	GTIN (EAN)	Qty.	Product data	Packaging
BLC	1711960000	PCB plug-in connector, female plug, 5.08 mm, No. of poles: 2, 180°, Crimp connection, Clamping range, rated connection, max.: 2.5 mm ² , Box	4008190934972 100 pc(s).		IEC: 400 V / 21 A UL: 300 V / 10 A / AWG 26 - AWG 14	Box
5.08/02/180R						
BK BX						
BLC	1610490000	PCB plug-in connector, female plug, 5.08 mm, No. of poles: 2, 180°, Crimp connection, Clamping range, rated connection, max.: 2.5 mm ² , Box	4008190057114 100 pc(s).		IEC: 400 V / 21 A UL: 300 V / 10 A / AWG 26 - AWG 14	Box
5.08/02/180R						
OR BX						

OMNIMATE Signal - series BL/SL 5.08 SL 5.08/02/90B 3.2SN OR BX

Weidmüller Interface GmbH & Co. KG
Klingenbergstraße 16
D-32758 Detmold
Germany
Fon: +49 5231 14-0
Fax: +49 5231 14-292083
www.weidmueller.com

Mating connector (conditionally pluggable)

BLZP 5.00/270LH SN



Female plugs with clamping-yoke screw for wire connection and a right-angle (90° or 270°) outlet direction. The female plugs provide space for labelling and can be coded. Can be fastened with flange or release latch. They feature an integrated plus/minus screw, protection against false insertion under clamping yoke. They are delivered with an opened clamping yoke.

- 0.2 – 2.5 mm² (IEC) / 26-12 AWG (UL)
- 400 V (IEC) / 300 V (UL)
- 15 A (IEC) / 10 A (UL)

General ordering data

Type	Order No.	Version	GTIN (EAN)	Qty.	Product data	Packaging
BLZP 5.00/02/270LH SN OR BX	1961440000	PCB plug-in connector, female plug, 5.00 mm, No. of poles: 2, 90°, Clamping yoke connection, Clamping range, rated connection, max.: 4 mm ² , Box	4032248640713	90 pc(s).	IEC: 400 V / 15.5 A / 0.2 - 4 mm ² UL: 300 V / 15 A / AWG 30 - AWG 12	Box
BLZP 5.00/02/270LH SN BK BX	1961670000	PCB plug-in connector, female plug, 5.00 mm, No. of poles: 2, 90°, Clamping yoke connection, Clamping range, rated connection, max.: 4 mm ² , Box	4032248640942	90 pc(s).	IEC: 400 V / 15.5 A / 0.2 - 4 mm ² UL: 300 V / 15 A / AWG 30 - AWG 12	Box

BLZFS 5.00/180



Female plugs with tension-clamp wire connection system, straight 180° outlet direction with sliced construction. The female plugs provide space for labelling and can be coded.

- 0.20 - 2.5 mm² (IEC) / 26 - 14 AWG (UL)
- 400 V (IEC) / 300 V (UL)
- 17 A (IEC) / 10 A (UL)

General ordering data

Type	Order No.	Version	GTIN (EAN)	Qty.	Product data	Packaging
BLZFS 5.00/02/180 SN OR BX	1696370000	PCB plug-in connector, female plug, 5.00 mm, No. of poles: 2, 180°, Tension clamp connection, Clamping range, rated connection, max.: 2.5 mm ² , Box	4008190878399	100 pc(s).	IEC: 400 V / 17 A / 0.5 - 2.5 mm ² UL: 300 V / 10 A / AWG 26 - AWG 14	Box
BLZFS 5.00/02/180 SN BK BX	1696600000	PCB plug-in connector, female plug, 5.00 mm, No. of poles: 2, 180°, Tension clamp connection, Clamping range, rated	4008190878627	100 pc(s).	IEC: 400 V / 17 A / 0.5 - 2.5 mm ² UL: 300 V / 10 A / AWG 26 - AWG 14	Box

Creation date October 15, 2013 4:35:56 PM CEST

**OMNIMATE Signal - series BL/SL 5.08
SL 5.08/02/90B 3.2SN OR BX**

Weidmüller Interface GmbH & Co. KG
Klingenbergstraße 16
D-32758 Detmold
Germany
Fon: +49 5231 14-0
Fax: +49 5231 14-292083
www.weidmueller.com

Mating connector (conditionally pluggable)

connection, max.: 2.5 mm²,
Box

BLZP 5.08/270LH SN


Female plugs with clamping-yoke screw connection for wire connection and a right-angle (90° or 270°) outlet direction. The female plugs provide space for labelling and can be coded. Can be fastened with flange or release latch. They feature an integrated plus/minus screw, protection against false insertion under clamping yoke. They are delivered with an opened clamping yoke.

- 0.2 – 2.5 mm² (IEC) / 26-12 AWG (UL)
- 400 V (IEC) / 300 V (UL)
- 15 A (IEC) / 10 A (UL)

General ordering data

Type	Order No.	Version	GTIN (EAN)	Qty.	Product data	Packaging
BLZP 5.08HC/02/270LH SN BK BX	1947240000	PCB plug-in connector, female plug, 5.08 mm, No. of poles: 2, 270°, Clamping yoke connection, Clamping range, rated connection, max.: 4 mm ² , Box	4032248623129	90 pc(s).	IEC: 400 V / 15.5 A / 0.2 - 4 mm ² UL: 300 V / 15 A / AWG 30 - AWG 12	Box

BLZP 5.08/180 SN


Female plugs with clamping-yoke screw for wire connection with straight (180°) outlet direction. The female plugs provide space for labelling and can be coded. Can be fastened with flange or release latch. They also feature the integrated plus/minus screw, protection from under insertion of wire, and are delivered with open clamping yoke.

- 0.2 – 2.5 mm² (IEC) / 26-12 AWG (UL)
- 400 V (IEC) / 300 V (UL)
- 19 A (IEC) / 15 A (UL)

General ordering data

Type	Order No.	Version	GTIN (EAN)	Qty.	Product data	Packaging
BLZP 5.08/02/180 SN OR BX	1943580000	PCB plug-in connector, female plug, 5.08 mm, No. of poles: 2, 180°, Clamping yoke connection, Clamping range, rated connection, max.: 4 mm ² , Box	4032248617562	100 pc(s).	IEC: 400 V / 19 A / 0.2 - 4 mm ² UL: 300 V / 15 A / AWG 30 - AWG 12	Box
BLZP 5.08/02/180 SN BK BX	1943810000	PCB plug-in connector, female plug, 5.08 mm, No. of poles: 2, 180°, Clamping yoke connection, Clamping range, rated connection, max.: 4 mm ² , Box	4032248617821	100 pc(s).	IEC: 400 V / 19 A / 0.2 - 4 mm ² UL: 300 V / 15 A / AWG 30 - AWG 12	Box

**OMNIMATE Signal - series BL/SL 5.08
SL 5.08/02/90B 3.2SN OR BX**

Weidmüller Interface GmbH & Co. KG
Klingenbergstraße 16
D-32758 Detmold
Germany
Fon: +49 5231 14-0
Fax: +49 5231 14-292083
www.weidmueller.com

Mating connector (conditionally pluggable)
BLL 5.08/180


Female header for PCB mounting. The solder pin length is optimised for wave flow soldering.

- 400 V (IEC) / 300 V (UL)
- 23 A (IEC) / 15 A (UL)

General ordering data

Type	Order No.	Version	GTIN (EAN)	Qty.	Product data	Packaging
BLL 5.08/02/180 3.2 SN OR BX	1630710000	PCB plug-in connector, female header, closed side, Solder connection, 5.08 mm, No. of poles: 2, 180°, Solder pin length (l): 3.2 mm, tinned, Orange, Box	4008190204136	180 pc(s).	IEC: 400 V / 23 A UL: 300 V / 15 A	Box

BLZP 5.08/270F SN


Female plugs with clamping-yoke screw connection for wire connection and a right-angle (90° or 270°) outlet direction. The female plugs provide space for labelling and can be coded. Can be fastened with flange or release latch. They feature an integrated plus/minus screw, protection against false insertion under clamping yoke. They are delivered with an opened clamping yoke.

- 0.2 – 2.5 mm² (IEC) / 26-12 AWG (UL)
- 400 V (IEC) / 300 V (UL)
- 15 A (IEC) / 10 A (UL)

General ordering data

Type	Order No.	Version	GTIN (EAN)	Qty.	Product data	Packaging
BLZP 5.08HC/02/270F SN OR BX	1950310000	PCB plug-in connector, female plug, 5.08 mm, No. of poles: 2, 270°, Clamping yoke connection, Clamping range, rated connection, max.: 4 mm ² , Box	4032248628421	90 pc(s).	IEC: 400 V / 15.5 A / 0.2 - 4 mm ² UL: 300 V / 15 A / AWG 30 - AWG 12	Box
BLZP 5.08HC/02/270F SN BK BX	1950550000	PCB plug-in connector, female plug, 5.08 mm, No. of poles: 2, 270°, Clamping yoke connection, Clamping range, rated connection, max.: 4 mm ² , Box	4032248628674	90 pc(s).	IEC: 400 V / 15.5 A / 0.2 - 4 mm ² UL: 300 V / 15 A / AWG 30 - AWG 12	Box

OMNIMATE Signal - series BL/SL 5.08 SL 5.08/02/90B 3.2SN OR BX

Weidmüller Interface GmbH & Co. KG
Klingenbergstraße 16
D-32758 Detmold
Germany
Fon: +49 5231 14-0
Fax: +49 5231 14-292083
www.weidmueller.com

Mating connector (conditionally pluggable)

BLZ 5.00/180F



Female plugs with clamping-yoke screw for wire connection with straight (180°) outlet direction. The female plugs provide space for labelling and can be coded.

- 0.20 - 2.5 mm² (IEC) / 26 - 12 AWG (UL)
- 400 V (IEC) / 300 V (UL)
- 19 A (IEC) / 15 A (UL)

General ordering data

Type	Order No.	Version	GTIN (EAN)	Qty.	Product data	Packaging
BLZ 5.00/02/180F SN OR BX	1843290000	PCB plug-in connector, female plug, 5.00 mm, No. of poles: 2, 180°, Clamping yoke connection, Clamping range, rated connection, max.: 3.31 mm ² , Box	4032248355013	100 pc(s).	IEC: 400 V / 19 A / 0.5 - 2.5 mm ² UL: 300 V / 15 A / AWG 26 - AWG 12	Box
BLZ 5.00/02/180F SN BK BX	1843520000	PCB plug-in connector, female plug, 5.00 mm, No. of poles: 2, 180°, Clamping yoke connection, Clamping range, rated connection, max.: 3.31 mm ² , Box	4032248355242	100 pc(s).	IEC: 400 V / 19 A / 0.5 - 2.5 mm ² UL: 300 V / 15 A / AWG 26 - AWG 12	Box

BLZ 5.08/90



Female plugs with clamping-yoke screw connection. The female plugs provide space for labelling and can be coded.

- 0.2 - 2.5 mm² (IEC) / 26 - 12 AWG (UL)
- 400 V (IEC) / 300 V (UL)
- 15 A (IEC) / 10 A (UL)

General ordering data

Type	Order No.	Version	GTIN (EAN)	Qty.	Product data	Packaging
BLZ 5.08/02/90 SN OR BX	1552760000	PCB plug-in connector, female plug, 5.08 mm, No. of poles: 2, 90°, Clamping yoke connection, Clamping range, rated connection, max.: 3.31 mm ² , Box	4008190151256	180 pc(s).	IEC: 400 V / 15 A / 0.2 - 2.5 mm ² UL: 300 V / 10 A / AWG 26 - AWG 12	Box
BLZ 5.08/02/90 SN BK BX	1552710000	PCB plug-in connector, female plug, 5.08 mm, No. of poles: 2, 90°, Clamping yoke connection, Clamping	4008190267704	180 pc(s).	IEC: 400 V / 15 A / 0.2 - 2.5 mm ² UL: 300 V / 10 A / AWG 26 - AWG 12	Box

**OMNIMATE Signal - series BL/SL 5.08
SL 5.08/02/90B 3.2SN OR BX**

Weidmüller Interface GmbH & Co. KG
Klingenbergstraße 16
D-32758 Detmold
Germany
Fon: +49 5231 14-0
Fax: +49 5231 14-292083
www.weidmueller.com

Mating connector (conditionally pluggable)

range, rated connection,
max.: 3.31 mm², Box

BLZP 5.00/90F SN


Female plugs with clamping-yoke screw for wire connection and a right-angle (90° or 270°) outlet direction. The female plugs provide space for labelling and can be coded. Can be fastened with flange or release latch. They feature an integrated plus/minus screw, protection against false insertion under clamping yoke. They are delivered with an opened clamping yoke.

- 0.2 – 2.5 mm² (IEC) / 26-12 AWG (UL)
- 400 V (IEC) / 300 V (UL)
- 15 A (IEC) / 10 A (UL)

General ordering data

Type	Order No.	Version	GTIN (EAN)	Qty.	Product data	Packaging
BLZP 5.00/02/90F SN BK BX	1959750000	PCB plug-in connector, female plug, 5.00 mm, No. of poles: 2, 90°, Clamping yoke connection, Clamping range, rated connection, max.: 4 mm ² , Box	4032248638680	90 pc(s).	IEC: 400 V / 15.5 A / 0.2 - 4 mm ² UL: 300 V / 15 A / AWG 30 - AWG 12	Box
BLZP 5.00/02/90F SN OR BX	1959520000	PCB plug-in connector, female plug, 5.00 mm, No. of poles: 2, 90°, Clamping yoke connection, Clamping range, rated connection, max.: 4 mm ² , Box	4032248638451	90 pc(s).	IEC: 400 V / 15.5 A / 0.2 - 4 mm ² UL: 300 V / 15 A / AWG 30 - AWG 12	Box

BLZP 5.00/180F SN


Female plugs with clamping-yoke screw for wire connection with straight (180°) outlet direction. The female plugs provide space for labelling and can be coded. Can be fastened with flange or release latch. They also feature the integrated plus/minus screw, protection from under insertion of wire, and are delivered with open clamping yoke.

- 0.2 – 2.5 mm² (IEC) / 26-12 AWG (UL)
- 400 V (IEC) / 300 V (UL)
- 19 A (IEC) / 15 A (UL)

General ordering data

Type	Order No.	Version	GTIN (EAN)	Qty.	Product data	Packaging
BLZP 5.00/02/180F SN BK BX	1956030000	PCB plug-in connector, female plug, 5.00 mm, No. of poles: 2, 180°, Clamping yoke connection, Clamping range, rated connection, max.: 4 mm ² , Box	4032248634606	90 pc(s).	IEC: 400 V / 19 A / 0.2 - 4 mm ² UL: 300 V / 15 A / AWG 30 - AWG 12	Box

**OMNIMATE Signal - series BL/SL 5.08
SL 5.08/02/90B 3.2SN OR BX**

Weidmüller Interface GmbH & Co. KG
Klingenbergstraße 16
D-32758 Detmold
Germany
Fon: +49 5231 14-0
Fax: +49 5231 14-292083
www.weidmueller.com

Mating connector (conditionally pluggable)

BLZP 5.00/02/180F SN OR BX	1955800000	PCB plug-in connector, female plug, 5.00 mm, No. of poles: 2, 180°, Clamping yoke connection, Clamping range, rated connection, max.: 4 mm ² , Box	4032248634347 90 pc(s).	IEC: 400 V / 19 A / 0.2 - 4 mm ² UL: 300 V / 15 A / AWG 30 - AWG 12	Box
----------------------------------	----------------------------	--	-------------------------	---	-----

BLZP 5.00/270LR SN


Female plugs with clamping-yoke screw for wire connection and a right-angle (90° or 270°) outlet direction. The female plugs provide space for labelling and can be coded. Can be fastened with flange or release latch. They feature an integrated plus/minus screw, protection against false insertion under clamping yoke. They are delivered with an opened clamping yoke.

- 0.2 – 2.5 mm² (IEC) / 26-12 AWG (UL)
- 400 V (IEC) / 300 V (UL)
- 15 A (IEC) / 10 A (UL)

General ordering data

Type	Order No.	Version	GTIN (EAN)	Qty.	Product data	Packaging
BLZP 5.00/02/270LR SN OR BX	1960960000	PCB plug-in connector, female plug, 5.00 mm, No. of poles: 2, 90°, Clamping yoke connection, Clamping range, rated connection, max.: 4 mm ² , Box	4032248639991 90 pc(s).		IEC: 400 V / 15.5 A / 0.2 - 4 mm ² UL: 300 V / 15 A / AWG 30 - AWG 12	Box
BLZP 5.00/02/270LR SN BK BX	1961190000	PCB plug-in connector, female plug, 5.00 mm, No. of poles: 2, 90°, Clamping yoke connection, Clamping range, rated connection, max.: 4 mm ² , Box	4032248640287 90 pc(s).		IEC: 400 V / 15.5 A / 0.2 - 4 mm ² UL: 300 V / 15 A / AWG 30 - AWG 12	Box

BLZP 5.00/180LH SN


Female plugs with clamping-yoke screw for wire connection with straight (180°) outlet direction. The female plugs provide space for labelling and can be coded. Can be fastened with flange or release latch. They also feature the integrated plus/minus screw, protection from under insertion of wire, and are delivered with open clamping yoke.

- 0.2 – 2.5 mm² (IEC) / 26-12 AWG (UL)
- 400 V (IEC) / 300 V (UL)
- 19 A (IEC) / 15 A (UL)

General ordering data

Type	Order No.	Version	GTIN (EAN)	Qty.	Product data	Packaging
BLZP 5.00/02/180LH SN BK BX	1957290000	PCB plug-in connector, female plug, 5.00 mm, No. of poles: 2, 180°, Clamping yoke connection, Clamping	4032248636105 90 pc(s).		IEC: 400 V / 19 A / 0.2 - 4 mm ² UL: 300 V / 15 A / AWG 30 - AWG 12	Box

OMNIMATE Signal - series BL/SL 5.08 SL 5.08/02/90B 3.2SN OR BX

Weidmüller Interface GmbH & Co. KG
Klingenbergstraße 16
D-32758 Detmold
Germany
Fon: +49 5231 14-0
Fax: +49 5231 14-292083
www.weidmueller.com

Mating connector (conditionally pluggable)

		range, rated connection, max.: 4 mm ² , Box		
BLZP	1956990000	PCB plug-in connector, female plug, 5.00 mm, No. of poles: 2, 180°, Clamping yoke connection, Clamping range, rated connection, max.: 4 mm ² , Box	4032248635870 90 pc(s).	IEC: 400 V / 19 A / 0.2 - 4 mm ² Box UL: 300 V / 15 A / AWG 30 - AWG 12
5.00/02/180LH				
SN OR BX				

BLZP 5.08/270LR SN



Female plugs with clamping-yoke screw connection for wire connection and a right-angle (90° or 270°) outlet direction. The female plugs provide space for labelling and can be coded. Can be fastened with flange or release latch. They feature an integrated plus/minus screw, protection against false insertion under clamping yoke. They are delivered with an opened clamping yoke.

- 0.2 – 2.5 mm² (IEC) / 26-12 AWG (UL)
- 400 V (IEC) / 300 V (UL)
- 15 A (IEC) / 10 A (UL)

General ordering data

Type	Order No.	Version	GTIN (EAN)	Qty.	Product data	Packaging
BLZP	1947760000	PCB plug-in connector, female plug, 5.08 mm, No. of poles: 2, 270°, Clamping yoke connection, Clamping range, rated connection, max.: 4 mm ² , Box	4032248624157 90 pc(s).		IEC: 400 V / 15.5 A / 0.2 - 4 mm ² UL: 300 V / 15 A / AWG 30 - AWG 12	Box
5.08HC/02/270LR						
SN BK BX						
BLZP	1947530000	PCB plug-in connector, female plug, 5.08 mm, No. of poles: 2, 270°, Clamping yoke connection, Clamping range, rated connection, max.: 4 mm ² , Box	4032248623822 90 pc(s).		IEC: 400 V / 15.5 A / 0.2 - 4 mm ² UL: 300 V / 15 A / AWG 30 - AWG 12	Box
5.08HC/02/270LR						
SN OR BX						

**OMNIMATE Signal - series BL/SL 5.08
SL 5.08/02/90B 3.2SN OR BX**

Weidmüller Interface GmbH & Co. KG
Klingenbergstraße 16
D-32758 Detmold
Germany
Fon: +49 5231 14-0
Fax: +49 5231 14-292083
www.weidmueller.com

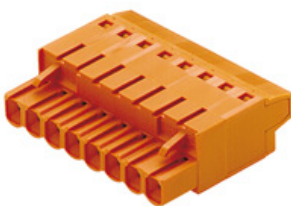
Mating connector (conditionally pluggable)
BLZ 5.08/180


Female plugs with clamping-yoke screw for wire connection with straight (180°) outlet direction. The female plugs provide space for labelling and can be coded.

- 0.2 - 2.5 mm² (IEC) / 26 - 12 AWG (UL)
- 400 V (IEC) / 300 V (UL)
- 19 A (IEC) / 15 A (UL)

General ordering data

Type	Order No.	Version	GTIN (EAN)	Qty.	Product data	Packaging
BLZ 5.08/02/180 SN BK BX	1526410000	PCB plug-in connector, female plug, 5.08 mm, No. of poles: 2, 180°, Clamping yoke connection, Clamping range, rated connection, max.: 3.31 mm ² , Box	4008190025038	100 pc(s).	IEC: 400 V / 19 A / 0.2 - 2.5 mm ² UL: 300 V / 15 A / AWG 26 - AWG 12	Box
BLZ 5.08/02/180 SN OR BX	1526460000	PCB plug-in connector, female plug, 5.08 mm, No. of poles: 2, 180°, Clamping yoke connection, Clamping range, rated connection, max.: 3.31 mm ² , Box	4008190155834	100 pc(s).	IEC: 400 V / 19 A / 0.2 - 2.5 mm ² UL: 300 V / 15 A / AWG 26 - AWG 12	Box

BLT 5.08


Female plugs with TOP screw system for connecting wires with straight 180° outlet direction. The female plugs provide space for labelling and can be coded.

- 0.2 - 2.5 mm² (IEC) / 26 - 14 AWG (UL)
- 400 V (IEC) / 300 V (UL)
- 17 A (IEC) / 10 A (UL)

General ordering data

Type	Order No.	Version	GTIN (EAN)	Qty.	Product data	Packaging
BLT 5.08/02/180 SN OR BX	1499560000	PCB plug-in connector, female plug, 5.08 mm, No. of poles: 2, 180°, TOP connection, Clamping range, rated connection, max.: 2.5 mm ² , Box	4008190060640	180 pc(s).	IEC: 400 V / 17 A / 0.2 - 2.5 mm ² UL: 300 V / 13 A / AWG 26 - AWG 14	Box
BLT 5.08/02/180 SN BK BX	1499510000	PCB plug-in connector, female plug, 5.08 mm, No. of poles: 2, 180°, TOP connection, Clamping	4008190861704	180 pc(s).	IEC: 400 V / 17 A / 0.2 - 2.5 mm ² UL: 300 V / 13 A / AWG 26 - AWG 14	Box

OMNIMATE Signal - series BL/SL 5.08 SL 5.08/02/90B 3.2SN OR BX

Weidmüller Interface GmbH & Co. KG
Klingenbergstraße 16
D-32758 Detmold
Germany
Fon: +49 5231 14-0
Fax: +49 5231 14-292083
www.weidmueller.com

Mating connector (conditionally pluggable)

range, rated connection,
max.: 2.5 mm², Box

BLL 5.08/90FI



Female header for PCB mounting. The solder pin length is optimised for wave flow soldering.

- 400 V (IEC) / 300 V (UL)
- 23 A (IEC) / 15 A (UL)

General ordering data

Type	Order No.	Version	GTIN (EAN)	Qty.	Product data	Packaging
BLL 5.08/02/90FI 3.2SN OR BX	1843750000	PCB plug-in connector, female header, Inverted flange, Solder connection, 5.08 mm, No. of poles: 2, 90°, Solder pin length (l): 3.2 mm, tinned, Orange, Box	4032248355501	90 pc(s).	IEC: 400 V / 23 A UL: 300 V / 15 A	Box

BLZ 5.08/180LH



Female plugs with clamping-yoke screw connection for wire, with straight wire outlet and release lever mechanism. The female plugs provide space for labelling and can be coded.

- 0.2 - 2.5 mm² (IEC) / 26 - 12 AWG (UL)
- 400 V (IEC) / 300 V (UL)
- 19 A (IEC) / 15 A (UL)

General ordering data

Type	Order No.	Version	GTIN (EAN)	Qty.	Product data	Packaging
BLZ 5.08/02/180LH SN BK BX	1893600000	PCB plug-in connector, female plug, 5.08 mm, No. of poles: 2, 180°, Clamping yoke connection, Clamping range, rated connection, max.: 3.31 mm ² , Box	4032248507788	90 pc(s).	IEC: 400 V / 19 A / 0.2 - 2.5 mm ² UL: 300 V / 15 A / AWG 26 - AWG 12	Box
BLZ 5.08/02/180LH SN OR BX	1892190000	PCB plug-in connector, female plug, 5.08 mm, No. of poles: 2, 180°, Clamping yoke connection, Clamping range, rated connection, max.: 3.31 mm ² , Box	4032248505517	90 pc(s).	IEC: 400 V / 19 A / 0.2 - 2.5 mm ² UL: 300 V / 15 A / AWG 26 - AWG 12	Box

**OMNIMATE Signal - series BL/SL 5.08
SL 5.08/02/90B 3.2SN OR BX**

Weidmüller Interface GmbH & Co. KG
Klingenbergstraße 16
D-32758 Detmold
Germany
Fon: +49 5231 14-0
Fax: +49 5231 14-292083
www.weidmueller.com

Mating connector (conditionally pluggable)
BLF 5.00/90LR SN


Just as reliable as the tried-and-tested original, with innovation in detail: the BLF 5.00 – the PUSH-IN version of the BLZ 5.00 female plug – features a new connection system and a more compact design. Weidmüller's innovative PUSH-IN spring connection features a trend-setting, tool-free wire connection system that is simple to operate. In terms of versatility, the BLF 5.00 offers just as much as the older versions:

- The choice of three wire outlet directions offers you proven design flexibility for your applications.
- Four flange variations, including the patented release latch, so you can design the interlock based on the requirements of the user.

General ordering data

Type	Order No.	Version	GTIN (EAN)	Qty.	Product data	Packaging
BLF 5.00HC/02/90LR SN BK BX	1979790000	PCB plug-in connector, female plug, 5.00 mm, No. of poles: 2, 90°, PUSH IN spring connection, Clamping range, rated connection, max.: 3.31 mm ² , Box	4032248674053	90 pc(s).	IEC: 400 V / 20 A / 0.2 - 2.5 mm ² UL: 300 V / 10 A / AWG 12 - AWG 26	Box
BLF 5.00HC/02/90LR SN OR BX	1980870000	PCB plug-in connector, female plug, 5.00 mm, No. of poles: 2, 90°, PUSH IN spring connection, Clamping range, rated connection, max.: 3.31 mm ² , Box	4032248675982	90 pc(s).	IEC: 400 V / 20 A / 0.2 - 2.5 mm ² UL: 300 V / 10 A / AWG 12 - AWG 26	Box

BLZF 5.08/180


Female plugs with tension-clamp wire connection system, straight 180° outlet direction. The female plugs provide space for labelling and can be coded.

- 0.2 - 2.5 mm² (IEC) / 26 - 12 AWG (UL)
- 400 V (IEC) / 300 V (UL)
- 17 A (IEC) / 15 A (UL)

General ordering data

Type	Order No.	Version	GTIN (EAN)	Qty.	Product data	Packaging
BLZF 5.08/02/180 SN BK BX	1707690000	PCB plug-in connector, female plug, 5.08 mm, No. of poles: 2, 180°, Tension clamp connection, Clamping range, rated	4008190316693	180 pc(s).	IEC: 400 V / 17 A / 0.2 - 2.5 mm ² UL: 300 V / 15 A / AWG 26 - AWG 12	Box

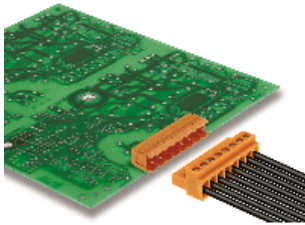
OMNIMATE Signal - series BL/SL 5.08 SL 5.08/02/90B 3.2SN OR BX

Weidmüller Interface GmbH & Co. KG
Klingenbergstraße 16
D-32758 Detmold
Germany
Fon: +49 5231 14-0
Fax: +49 5231 14-292083
www.weidmueller.com

Mating connector (conditionally pluggable)

		connection, max.: 3.31 mm ² , Box		
BLZF 5.08/02/180 SN OR BX	1707460000	PCB plug-in connector, female plug, 5.08 mm, No. of poles: 2, 180°, Tension clamp connection, Clamping range, rated connection, max.: 3.31 mm ² , Box	4008190389628 180 pc(s).	IEC: 400 V / 17 A / 0.2 - 2.5 mm ² UL: 300 V / 15 A / AWG 26 - AWG 12

BL 5.00



Female plugs with leaf-spring wire connection system.
The female plugs provide space for labelling.

- 0.2 - 1.5 mm² (IEC) / 26 - 14 AWG (UL)
- 400 V (IEC) / 300 V (UL)
- 11 A (IEC) / 10 A (UL)

General ordering data

Type	Order No.	Version	GTIN (EAN)	Qty.	Product data	Packaging
BL 5.00/02/180 SN OR BX	1723110000	PCB plug-in connector, female plug, 5.00 mm, No. of poles: 2, 180°, Pressure clamp connection, Clamping range, rated connection, max.: 2.08 mm ² , Box	4032248002511	100 pc(s).	IEC: 400 V / 14 A / 0.5 - 1.5 mm ² UL: 300 V / 10 A / AWG 26 - AWG 14	Box
BL 5.00/02/180 SN BK BX	1730700000	PCB plug-in connector, female plug, 5.00 mm, No. of poles: 2, 180°, Pressure clamp connection, Clamping range, rated connection, max.: 2.08 mm ² , Box	4008190387334	100 pc(s).	IEC: 400 V / 14 A / 0.5 - 1.5 mm ² UL: 300 V / 10 A / AWG 26 - AWG 14	Box
BL 5.00/02/180 SN GY BX	1762770000	PCB plug-in connector, female plug, 5.00 mm, No. of poles: 2, 180°, Pressure clamp connection, Clamping range, rated connection, max.: 2.08 mm ² , Box	4032248048687	100 pc(s).	IEC: 400 V / 14 A / 0.5 - 1.5 mm ² UL: 300 V / 10 A / AWG 26 - AWG 14	Box

OMNIMATE Signal - series BL/SL 5.08 SL 5.08/02/90B 3.2SN OR BX

Weidmüller Interface GmbH & Co. KG
Klingenbergstraße 16
D-32758 Detmold
Germany
Fon: +49 5231 14-0
Fax: +49 5231 14-292083
www.weidmueller.com

Mating connector (conditionally pluggable)

BLZ 5.00/270



Female plugs with clamping-yoke screw for wire connection with 270° outlet direction. The female plugs provide space for labelling and can be coded.

- 0.20 - 2.5 mm² (IEC) / 26 - 12 AWG (UL)
- 400 V (IEC) / 300 V (UL)
- 15 A (IEC) / 10 A (UL)

General ordering data

Type	Order No.	Version	GTIN (EAN)	Qty.	Product data	Packaging
BLZ 5.00/02/270 SN BK BX	1637810000	PCB plug-in connector, female plug, 5.00 mm, No. of poles: 2, 270°, Clamping yoke connection, Clamping range, rated connection, max.: 3.31 mm ² , Box	4008190275051	180 pc(s).	IEC: 400 V / 15 A / 0.5 - 2.5 mm ² UL: 300 V / 10 A / AWG 26 - AWG 12	Box
BLZ 5.00/02/270 SN OR BX	1637580000	PCB plug-in connector, female plug, 5.00 mm, No. of poles: 2, 270°, Clamping yoke connection, Clamping range, rated connection, max.: 3.31 mm ² , Box	4008190274825	180 pc(s).	IEC: 400 V / 15 A / 0.5 - 2.5 mm ² UL: 300 V / 10 A / AWG 26 - AWG 12	Box

BLF 5.08/90LR SN



Just as reliable as the tried-and-tested original, with innovation in detail: the BLF 5.08, PUSH-IN version of the BLZ 5.08 female header, features a new connection system and a more compact design. Weidmüller innovative PUSH-IN spring connection features a trend-setting, tool-free wire connection system that is simple to operate. In terms of versatility, the BLF 5.08 offers just as much as the older versions:

- The choice of three wire outlet directions offers you proven design flexibility for your applications.
- Four flange variations, including the patented release latch, so you can design the interlock based on the requirements of the user.
- Use the BLF 5.08 and SL 5.08HC plug combination in order to reach the max. rated specifications.

General ordering data

Type	Order No.	Version	GTIN (EAN)	Qty.	Product data	Packaging
BLF 5.08HC/02/90LR SN BK BX	1000410001	PCB plug-in connector, female plug, 5.08 mm, No. of poles: 2, 90°, PUSH IN spring connection, Clamping range, rated	4032248690374	90 pc(s).	IEC: 400 V / 24 A / 0.2 - 2.5 mm ² UL: 300 V / 18.5 A / AWG 26 - AWG 12	Box

**OMNIMATE Signal - series BL/SL 5.08
SL 5.08/02/90B 3.2SN OR BX**

Weidmüller Interface GmbH & Co. KG
Klingenbergstraße 16
D-32758 Detmold
Germany
Fon: +49 5231 14-0
Fax: +49 5231 14-292083
www.weidmueller.com

Mating connector (conditionally pluggable)

		connection, max.: 3.31 mm ² , Box		
BLF	1002280000	PCB plug-in connector, female plug, 5.08 mm, No. of poles: 2, 90°, PUSH IN spring connection, Clamping range, rated connection, max.: 3.31 mm ² , Box	4032248694440 90 pc(s).	IEC: 400 V / 24 A / 0.2 - 2.5 mm ² UL: 300 V / 18.5 A / AWG 26 - AWG 12
5.08HC/02/90LR				
SN OR BX				

BLZ 5.08/180LR



Female plugs with clamping-yoke screw connection for wire, with straight wire outlet and release latch mechanism. The female plugs provide space for labelling and can be coded.

- 0.2 - 2.5 mm² (IEC) / 26 - 12 AWG (UL)
- 400 V (IEC) / 300 V (UL)
- 19 A (IEC) / 15 A (UL)

General ordering data

Type	Order No.	Version	GTIN (EAN)	Qty.	Product data	Packaging
BLZ	1892950000	PCB plug-in connector, female plug, 5.08 mm, No. of poles: 2, 180°, Clamping yoke connection, Clamping range, rated connection, max.: 3.31 mm ² , Box	4032248507092 90 pc(s).		IEC: 400 V / 19 A / 0.2 - 2.5 mm ² UL: 300 V / 15 A / AWG 26 - AWG 12	Box
5.08/02/180LR						
SN BK BX						
BLZ	1851200000	PCB plug-in connector, female plug, 5.08 mm, No. of poles: 2, 180°, Clamping yoke connection, Clamping range, rated connection, max.: 3.31 mm ² , Box	4032248381272 90 pc(s).		IEC: 400 V / 19 A / 0.2 - 2.5 mm ² UL: 300 V / 15 A / AWG 26 - AWG 12	Box
5.08/02/180LR						
SN OR BX						

**OMNIMATE Signal - series BL/SL 5.08
SL 5.08/02/90B 3.2SN OR BX**

Weidmüller Interface GmbH & Co. KG
Klingenbergstraße 16
D-32758 Detmold
Germany
Fon: +49 5231 14-0
Fax: +49 5231 14-292083
www.weidmueller.com

Mating connector (conditionally pluggable)
BLT 5.08LR


Female plugs with TOP screw connection for wire, with straight wire outlet and release latch mechanism. The female plugs provide space for labelling and can be coded.

- 0.2 - 2.5 mm² (IEC) / 26 - 14 AWG (UL)
- 400 V (IEC) / 300 V (UL)
- 17 A (IEC) / 10 A (UL)

General ordering data

Type	Order No.	Version	GTIN (EAN)	Qty.	Product data	Packaging
BLT 5.08/02/180LR SN OR BX	1890220000	PCB plug-in connector, female plug, 5.08 mm, No. of poles: 2, 180°, TOP connection, Clamping range, rated connection, max.: 2.5 mm ² , Box	4032248498406 90 pc(s).		IEC: 400 V / 17 A / 0.2 - 2.5 mm ² UL: 300 V / 13 A / AWG 26 - AWG 14	Box
BLT 5.08/02/180LR SN BK BX	1894130000	PCB plug-in connector, female plug, 5.08 mm, No. of poles: 2, 180°, TOP connection, Clamping range, rated connection, max.: 2.5 mm ² , Box	4032248508372 90 pc(s).		IEC: 400 V / 17 A / 0.2 - 2.5 mm ² UL: 300 V / 13 A / AWG 26 - AWG 14	Box

BLZP 5.08/90F SN


Female plugs with clamping-yoke screw connection for wire connection and a right-angle (90° or 270°) outlet direction. The female plugs provide space for labelling and can be coded. Can be fastened with flange or release latch. They feature an integrated plus/minus screw, protection against false insertion under clamping yoke. They are delivered with an opened clamping yoke.

- 0.2 - 2.5 mm² (IEC) / 26-12 AWG (UL)
- 400 V (IEC) / 300 V (UL)
- 15 A (IEC) / 10 A (UL)

General ordering data

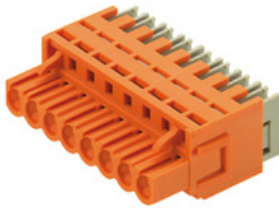
Type	Order No.	Version	GTIN (EAN)	Qty.	Product data	Packaging
BLZP 5.08HC/02/90F SN BK BX	1950040000	PCB plug-in connector, female plug, 5.08 mm, No. of poles: 2, 90°, Clamping yoke connection, Clamping range, rated connection, max.: 4 mm ² , Box	4032248627974 90 pc(s).		IEC: 400 V / 15.5 A / 0.2 - 4 mm ² UL: 300 V / 15 A / AWG 30 - AWG 12	Box
BLZP 5.08HC/02/90F SN OR BX	1949800000	PCB plug-in connector, female plug, 5.08 mm, No. of poles: 2, 90°, Clamping yoke connection, Clamping	4032248627721 90 pc(s).		IEC: 400 V / 15.5 A / 0.2 - 4 mm ² UL: 300 V / 15 A / AWG 30 - AWG 12	Box

**OMNIMATE Signal - series BL/SL 5.08
SL 5.08/02/90B 3.2SN OR BX**

Weidmüller Interface GmbH & Co. KG
Klingenbergstraße 16
D-32758 Detmold
Germany
Fon: +49 5231 14-0
Fax: +49 5231 14-292083
www.weidmueller.com

Mating connector (conditionally pluggable)

range, rated connection,
max.: 4 mm², Box

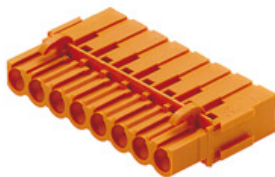
BLIDC 5.08B


Female plugs with IDC wire connection system. The female plugs provide space for labelling and can be coded.

- 0.35 - 0.75 mm² (IEC) / 22 - 20 AWG (UL)
- 400 V (IEC) / 300 V (UL)
- 11 A (IEC) / 5 A (UL)

General ordering data

Type	Order No.	Version	GTIN (EAN)	Qty.	Product data	Packaging
BLIDC 5.08/02/180B SN OR BX	1759500000	PCB plug-in connector, female plug, 5.08 mm, No. of poles: 2, 180°, IDC terminal, Clamping range, rated connection, max.: 0.75 mm ² , Box	4032248069736	100 pc(s).	IEC: 400 V / 11 A / 0.5 - 0.75 mm ² UL: 300 V / 5 A / AWG 22 - AWG 20	Box
BLIDC 5.08/02/180B SN BK BX	1759610000	PCB plug-in connector, female plug, 5.08 mm, No. of poles: 2, 180°, IDC terminal, Clamping range, rated connection, max.: 0.75 mm ² , Box	4032248069842	100 pc(s).	IEC: 400 V / 11 A / 0.5 - 0.75 mm ² UL: 300 V / 5 A / AWG 22 - AWG 20	Box

BLC 5.08BR


Female plugs with crimp wire connection system. The female plugs provide space for labelling and can be coded.

- 0.25 - 2.5 mm² (IEC) / 26 - 14 AWG (UL)
- 400 V (IEC) / 300 V (UL)
- 21 A (IEC) / 10 A (UL)

General ordering data

Type	Order No.	Version	GTIN (EAN)	Qty.	Product data	Packaging
BLC 5.08/02/180BR OR BX	1649370000	PCB plug-in connector, female plug, 5.08 mm, No. of poles: 2, 180°, Crimp connection, Clamping range, rated connection, max.: 2.5 mm ² , Box	4008190294496	100 pc(s).	IEC: 400 V / 21 A UL: 300 V / 10 A / AWG 26 - AWG 14	Box
BLC 5.08/02/180BR BK BX	1712110000	PCB plug-in connector, female plug, 5.08 mm, No. of poles: 2, 180°, Crimp	4008190935122	100 pc(s).	IEC: 400 V / 21 A UL: 300 V / 10 A / AWG 26 - AWG 14	Box

Creation date October 15, 2013 4:35:56 PM CEST

**OMNIMATE Signal - series BL/SL 5.08
SL 5.08/02/90B 3.2SN OR BX**

Weidmüller Interface GmbH & Co. KG
Klingenbergstraße 16
D-32758 Detmold
Germany
Fon: +49 5231 14-0
Fax: +49 5231 14-292083
www.weidmueller.com

Mating connector (conditionally pluggable)

connection, Clamping
range, rated connection,
max.: 2.5 mm², Box

BLZ 5.00/180


Female plugs with clamping-yoke screw for wire connection with straight (180°) outlet direction. The female plugs provide space for labelling and can be coded.

- 0.20 - 2.5 mm² (IEC) / 26 - 12 AWG (UL)
- 400 V (IEC) / 300 V (UL)
- 19 A (IEC) / 15 A (UL)

General ordering data

Type	Order No.	Version	GTIN (EAN)	Qty.	Product data	Packaging
BLZ 5.00/02/180 SN OR BX	1571350000	PCB plug-in connector, female plug, 5.00 mm, No. of poles: 2, 180°, Clamping yoke connection, Clamping range, rated connection, max.: 3.31 mm ² , Box	4008190172534	100 pc(s).	IEC: 400 V / 19 A / 0.5 - 2.5 mm ² UL: 300 V / 15 A / AWG 26 - AWG 12	Box
BLZ 5.00/02/180 SN BK BX	1625610000	PCB plug-in connector, female plug, 5.00 mm, No. of poles: 2, 180°, Clamping yoke connection, Clamping range, rated connection, max.: 3.31 mm ² , Box	4008190196912	100 pc(s).	IEC: 400 V / 19 A / 0.5 - 2.5 mm ² UL: 300 V / 15 A / AWG 26 - AWG 12	Box

BL 5.08


Female plugs with leaf-spring wire connection system. The female plugs provide space for labelling.

- 0.2 - 1.5 mm² (IEC) / 26 - 14 AWG (UL)
- 400 V (IEC) / 300 V (UL)
- 11 A (IEC) / 10 A (UL)

General ordering data

Type	Order No.	Version	GTIN (EAN)	Qty.	Product data	Packaging
BL 5.08/02/180 SN BK BX	1716470000	PCB plug-in connector, female plug, 5.08 mm, No. of poles: 2, 180°, Pressure clamp connection, Clamping range, rated connection, max.: 2.08 mm ² , Box	4008190376512	100 pc(s).	IEC: 400 V / 14 A / 0.2 - 1.5 mm ² UL: 300 V / 10 A / AWG 26 - AWG 14	Box

**OMNIMATE Signal - series BL/SL 5.08
SL 5.08/02/90B 3.2SN OR BX**

Weidmüller Interface GmbH & Co. KG
 Klingenbergstraße 16
 D-32758 Detmold
 Germany
 Fon: +49 5231 14-0
 Fax: +49 5231 14-292083
 www.weidmueller.com

Mating connector (conditionally pluggable)

BL 5.08/02/180 SN DKGN BX	1723830000	PCB plug-in connector, female plug, 5.08 mm, No. of poles: 2, 180°, Pressure clamp connection, Clamping range, rated connection, max.: 2.08 mm ² , Box	4008190376192 100 pc(s).	IEC: 400 V / 14 A / 0.2 - 1.5 mm ² UL: 300 V / 10 A / AWG 26 - AWG 14	Box
BL 5.08/02/180 SN OR BX	1716320000	PCB plug-in connector, female plug, 5.08 mm, No. of poles: 2, 180°, Pressure clamp connection, Clamping range, rated connection, max.: 2.08 mm ² , Box	4008190376345 100 pc(s).	IEC: 400 V / 14 A / 0.2 - 1.5 mm ² UL: 300 V / 10 A / AWG 26 - AWG 14	Box

BLZP 5.08/180F SN


Female plugs with clamping-yoke screw for wire connection with straight (180°) outlet direction. The female plugs provide space for labelling and can be coded. Can be fastened with flange or release latch. They also feature the integrated plus/minus screw, protection from under insertion of wire, and are delivered with open clamping yoke.

- 0.2 – 2.5 mm² (IEC) / 26-12 AWG (UL)
- 400 V (IEC) / 300 V (UL)
- 19 A (IEC) / 15 A (UL)

General ordering data

Type	Order No.	Version	GTIN (EAN)	Qty.	Product data	Packaging
BLZP 5.08/02/180F SN OR BX	1944090000	PCB plug-in connector, female plug, 5.08 mm, No. of poles: 2, 180°, Clamping yoke connection, Clamping range, rated connection, max.: 4 mm ² , Box	4032248617470 90 pc(s).		IEC: 400 V / 19 A / 0.2 - 4 mm ² UL: 300 V / 15 A / AWG 30 - AWG 12	Box
BLZP 5.08/02/180F SN BK BX	1944330000	PCB plug-in connector, female plug, 5.08 mm, No. of poles: 2, 180°, Clamping yoke connection, Clamping range, rated connection, max.: 4 mm ² , Box	4032248618903 90 pc(s).		IEC: 400 V / 19 A / 0.2 - 4 mm ² UL: 300 V / 15 A / AWG 30 - AWG 12	Box

**OMNIMATE Signal - series BL/SL 5.08
SL 5.08/02/90B 3.2SN OR BX**

Weidmüller Interface GmbH & Co. KG
Klingenbergstraße 16
D-32758 Detmold
Germany
Fon: +49 5231 14-0
Fax: +49 5231 14-292083
www.weidmueller.com

Mating connector (conditionally pluggable)
BLDT 5.08


Female plugs with two clamping-yoke screw connections per pole for wire connections with 90° and 270° outlet directions. The female plugs provide space for labelling and can be coded.

- 0.2 - 2.5 mm² (IEC) / 26 - 12 AWG (UL)
- 400 V (IEC) / 300 V (UL)
- 14 A (IEC) / 10 A (UL)

General ordering data

Type	Order No.	Version	GTIN (EAN)	Qty.	Product data	Packaging
BLDT 5.08/02/- SN OR BX	1644730000	PCB plug-in connector, female plug, 5.08 mm, No. of poles: 2, 180°, TOP connection, Clamping range, rated connection, max.: 3.31 mm ² , Box	4008190283940	100 pc(s).	IEC: 400 V / 14 A / 0.2 - 2.5 mm ² UL: 300 V / 10 A / AWG 26 - AWG 12	Box
BLDT 5.08/02/- SN BK BX	1660710000	PCB plug-in connector, female plug, 5.08 mm, No. of poles: 2, 180°, TOP connection, Clamping range, rated connection, max.: 3.31 mm ² , Box	4008190417161	100 pc(s).	IEC: 400 V / 14 A / 0.2 - 2.5 mm ² UL: 300 V / 10 A / AWG 26 - AWG 12	Box

BLZ 5.08/270


Female plugs with clamping-yoke screw connection. The female plugs provide space for labelling and can be coded.

- 0.2 - 2.5 mm² (IEC) / 26 - 12 AWG (UL)
- 400 V (IEC) / 300 V (UL)
- 15 A (IEC) / 10 A (UL)

General ordering data

Type	Order No.	Version	GTIN (EAN)	Qty.	Product data	Packaging
BLZ 5.08/02/270 SN BK BX	1557310000	PCB plug-in connector, female plug, 5.08 mm, No. of poles: 2, 270°, Clamping yoke connection, Clamping range, rated connection, max.: 3.31 mm ² , Box	4008190269425	180 pc(s).	IEC: 400 V / 15 A / 0.2 - 2.5 mm ² UL: 300 V / 10 A / AWG 26 - AWG 12	Box
BLZ 5.08/02/270 SN OR BX	1557360000	PCB plug-in connector, female plug, 5.08 mm, No. of poles: 2, 270°, Clamping yoke connection, Clamping	4008190118167	180 pc(s).	IEC: 400 V / 15 A / 0.2 - 2.5 mm ² UL: 300 V / 10 A / AWG 26 - AWG 12	Box

**OMNIMATE Signal - series BL/SL 5.08
SL 5.08/02/90B 3.2SN OR BX**

Weidmüller Interface GmbH & Co. KG
Klingenbergstraße 16
D-32758 Detmold
Germany
Fon: +49 5231 14-0
Fax: +49 5231 14-292083
www.weidmueller.com

Mating connector (conditionally pluggable)

range, rated connection,
max.: 3.31 mm², Box

BLZP 5.08/180LR SN


Female plugs with clamping-yoke screw for wire connection with straight (180°) outlet direction. The female plugs provide space for labelling and can be coded. Can be fastened with flange or release latch. They also feature the integrated plus/minus screw, protection from under insertion of wire, and are delivered with open clamping yoke.

- 0.2 – 2.5 mm² (IEC) / 26-12 AWG (UL)
- 400 V (IEC) / 300 V (UL)
- 19 A (IEC) / 15 A (UL)

General ordering data

Type	Order No.	Version	GTIN (EAN)	Qty.	Product data	Packaging
BLZP 5.08/02/180LR SN OR BX	1944830000	PCB plug-in connector, female plug, 5.08 mm, No. of poles: 2, 180°, Clamping yoke connection, Clamping range, rated connection, max.: 4 mm ² , Box	4032248619436	90 pc(s).	IEC: 400 V / 19 A / 0.2 - 4 mm ² UL: 300 V / 15 A / AWG 30 - AWG 12	Box
BLZP 5.08/02/180LR SN BK BX	1945060000	PCB plug-in connector, female plug, 5.08 mm, No. of poles: 2, 180°, Clamping yoke connection, Clamping range, rated connection, max.: 4 mm ² , Box	4032248620203	90 pc(s).	IEC: 400 V / 19 A / 0.2 - 4 mm ² UL: 300 V / 15 A / AWG 30 - AWG 12	Box

BLZF 5.08/180F


Female plugs with tension-clamp wire connection system, straight 180° outlet direction. The female plugs provide space for labelling and can be coded.

- 0.2 - 2.5 mm² (IEC) / 26 - 12 AWG (UL)
- 400 V (IEC) / 300 V (UL)
- 17 A (IEC) / 15 A (UL)

General ordering data

Type	Order No.	Version	GTIN (EAN)	Qty.	Product data	Packaging
BLZF 5.08/02/180F SN OR BX	1803330000	PCB plug-in connector, female plug, 5.08 mm, No. of poles: 2, 180°, Tension clamp connection, Clamping range, rated connection, max.: 3.31 mm ² , Box	4032248258727	90 pc(s).	IEC: 400 V / 17 A / 0.2 - 2.5 mm ² UL: 300 V / 15 A / AWG 26 - AWG 12	Box

**OMNIMATE Signal - series BL/SL 5.08
SL 5.08/02/90B 3.2SN OR BX**

Weidmüller Interface GmbH & Co. KG
 Klingenbergstraße 16
 D-32758 Detmold
 Germany
 Fon: +49 5231 14-0
 Fax: +49 5231 14-292083
 www.weidmueller.com

Mating connector (conditionally pluggable)

BLZF 5.08/02/180F SN BK BX	1803560000	PCB plug-in connector, female plug, 5.08 mm, No. of poles: 2, 180°, Tension clamp connection, Clamping range, rated connection, max.: 3.31 mm ² , Box	4032248258963 90 pc(s).	IEC: 400 V / 17 A / 0.2 - 2.5 mm ² UL: 300 V / 15 A / AWG 26 - AWG 12	Box
----------------------------------	----------------------------	--	-------------------------	---	-----

BLF 5.00/90 SN


Just as reliable as the tried-and-tested original, with innovation in detail: the BLF 5.00 – the PUSH-IN version of the BLZ 5.00 female plug – features a new connection system and a more compact design. Weidmüller's innovative PUSH-IN spring connection features a trend-setting, tool-free wire connection system that is simple to operate. In terms of versatility, the BLF 5.00 offers just as much as the older versions:

- The choice of three wire outlet directions offers you proven design flexibility for your applications.
- Four flange variations, including the patented release latch, so you can design the interlock based on the requirements of the user.

General ordering data

Type	Order No.	Version	GTIN (EAN)	Qty.	Product data	Packaging
BLF 5.00HC/02/90 SN OR BX	1980170000	PCB plug-in connector, female plug, 5.00 mm, No. of poles: 2, 90°, PUSH IN spring connection, Clamping range, rated connection, max.: 3.31 mm ² , Box	4032248675258 180 pc(s).		IEC: 400 V / 20 A / 0.2 - 2.5 mm ² UL: 300 V / 10 A / AWG 12 - AWG 26	Box
BLF 5.00HC/02/90 SN BK BX	1979270000	PCB plug-in connector, female plug, 5.00 mm, No. of poles: 2, 90°, PUSH IN spring connection, Clamping range, rated connection, max.: 3.31 mm ² , Box	4032248674442 180 pc(s).		IEC: 400 V / 20 A / 0.2 - 2.5 mm ² UL: 300 V / 10 A / AWG 12 - AWG 26	Box

**OMNIMATE Signal - series BL/SL 5.08
SL 5.08/02/90B 3.2SN OR BX**

Weidmüller Interface GmbH & Co. KG
 Klingenbergstraße 16
 D-32758 Detmold
 Germany
 Fon: +49 5231 14-0
 Fax: +49 5231 14-292083
 www.weidmueller.com

Mating connector (conditionally pluggable)**BLZP 5.08/270 SN**

Female plugs with clamping-yoke screw connection for wire connection and a right-angle (90° or 270°) outlet direction. The female plugs provide space for labelling and can be coded. Can be fastened with flange or release latch. They feature an integrated plus/minus screw, protection against false insertion under clamping yoke. They are delivered with an opened clamping yoke.

- 0.2 – 2.5 mm² (IEC) / 26-12 AWG (UL)
- 400 V (IEC) / 300 V (UL)
- 15 A (IEC) / 10 A (UL)

General ordering data

Type	Order No.	Version	GTIN (EAN)	Qty.	Product data	Packaging
BLZP 5.08HC/02/270 SN BK BX	1949020000	PCB plug-in connector, female plug, 5.08 mm, No. of poles: 2, 270°, Clamping yoke connection, Clamping range, rated connection, max.: 4 mm ² , Box	4032248626472	180 pc(s).	IEC: 400 V / 15.5 A / 0.2 - 4 mm ² UL: 300 V / 15 A / AWG 30 - AWG 12	Box
BLZP 5.08HC/02/270 SN OR BX	1948790000	PCB plug-in connector, female plug, 5.08 mm, No. of poles: 2, 270°, Clamping yoke connection, Clamping range, rated connection, max.: 4 mm ² , Box	4032248626243	180 pc(s).	IEC: 400 V / 15.5 A / 0.2 - 4 mm ² UL: 300 V / 15 A / AWG 30 - AWG 12	Box

BLZP 5.08/225 SN

Clamping-yoke wire connection with right-angled (90° or 270°) or angled (225°) outlet direction. The female plugs provide space for labelling and can be coded. Can be fastened with flange or release latch. They also feature the integrated plus/minus screw, protection from under insertion of wire, and are delivered with open clamping yoke.

- 0.2 – 2.5 mm² (IEC) / 26-12 AWG (UL)
- 400 V (IEC) / 300 V (UL)
- 17.5 A (IEC) / 10 A (UL)

General ordering data

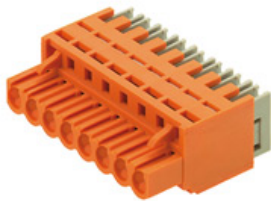
Type	Order No.	Version	GTIN (EAN)	Qty.	Product data	Packaging
BLZP 5.08HC/02/225 SN BK BX	1946560000	PCB plug-in connector, female plug, 5.08 mm, No. of poles: 2, 225°, Clamping yoke connection, Clamping range, rated connection, max.: 4 mm ² , Box	4032248622337	180 pc(s).	IEC: 400 V / 17.5 A / 0.2 - 4 mm ² UL: 300 V / 15 A / AWG 30 - AWG 12	Box
BLZP 5.08HC/02/225 SN OR BX	1946250000	PCB plug-in connector, female plug, 5.08 mm, No. of poles: 2, 225°, Clamping yoke connection, Clamping	4032248621828	180 pc(s).	IEC: 400 V / 17.5 A / 0.2 - 4 mm ² UL: 300 V / 15 A / AWG 30 - AWG 12	Box

**OMNIMATE Signal - series BL/SL 5.08
SL 5.08/02/90B 3.2SN OR BX**

Weidmüller Interface GmbH & Co. KG
 Klingenbergstraße 16
 D-32758 Detmold
 Germany
 Fon: +49 5231 14-0
 Fax: +49 5231 14-292083
 www.weidmueller.com

Mating connector (conditionally pluggable)

range, rated connection,
 max.: 4 mm², Box

BLIDC 5.08


Female plugs with IDC wire connection system. The female plugs provide space for labelling and can be coded.

- 0.35 - 0.75 mm² (IEC) / 22 - 20 AWG (UL)
- 400 V (IEC) / 300 V (UL)
- 11 A (IEC) / 5 A (UL)

General ordering data

Type	Order No.	Version	GTIN (EAN)	Qty.	Product data	Packaging
BLIDC 5.08/02/180 SN OR BX	1724940000	PCB plug-in connector, female plug, 5.08 mm, No. of poles: 2, 180°, IDC terminal, Clamping range, rated connection, max.: 0.75 mm ² , Box	4008190377281	100 pc(s).	IEC: 400 V / 11 A / 0.5 - 0.75 mm ² UL: 300 V / 5 A / AWG 22 - AWG 20	Box

BLT 5.08LH


Female plugs with TOP screw connection for wire, with straight wire outlet and release lever mechanism. The female plugs provide space for labelling and can be coded.

- 0.2 - 2.5 mm² (IEC) / 26 - 14 AWG (UL)
- 400 V (IEC) / 300 V (UL)
- 17 A (IEC) / 10 A (UL)

General ordering data

Type	Order No.	Version	GTIN (EAN)	Qty.	Product data	Packaging
BLT 5.08/02/180LH SN BK BX	1892490000	PCB plug-in connector, female plug, 5.08 mm, No. of poles: 2, 180°, TOP connection, Clamping range, rated connection, max.: 2.5 mm ² , Box	4032248506538	90 pc(s).	IEC: 400 V / 17 A / 0.2 - 2.5 mm ² UL: 300 V / 13 A / AWG 26 - AWG 14	Box
BLT 5.08/02/180LH SN OR BX	1889960000	PCB plug-in connector, female plug, 5.08 mm, No. of poles: 2, 180°, TOP connection, Clamping range, rated connection, max.: 2.5 mm ² , Box	4032248498000	90 pc(s).	IEC: 400 V / 17 A / 0.2 - 2.5 mm ² UL: 300 V / 13 A / AWG 26 - AWG 14	Box

**OMNIMATE Signal - series BL/SL 5.08
SL 5.08/02/90B 3.2SN OR BX**

Weidmüller Interface GmbH & Co. KG
Klingenbergstraße 16
D-32758 Detmold
Germany
Fon: +49 5231 14-0
Fax: +49 5231 14-292083
www.weidmueller.com

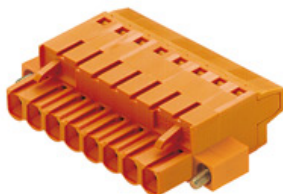
Mating connector (conditionally pluggable)
BLF 5.08/90LH SN


Just as reliable as the tried-and-tested original, with innovation in detail: the BLF 5.08, PUSH-IN version of the BLZ 5.08 female header, features a new connection system and a more compact design. Weidmüller innovative PUSH-IN spring connection features a trend-setting, tool-free wire connection system that is simple to operate. In terms of versatility, the BLF 5.08 offers just as much as the older versions:

- The choice of three wire outlet directions offers you proven design flexibility for your applications.
- Four flange variations, including the patented release latch, so you can design the interlock based on the requirements of the user.
- Use the BLF 5.08 and SL 5.08HC plug combination in order to reach the max. rated specifications.

General ordering data

Type	Order No.	Version	GTIN (EAN)	Qty.	Product data	Packaging
BLF 5.08HC/02/90LH SN OR BX	1002480000	PCB plug-in connector, female plug, 5.08 mm, No. of poles: 2, 90°, PUSH IN spring connection, Clamping range, rated connection, max.: 3.31 mm ² , Box	4032248694853	90 pc(s).	IEC: 400 V / 24 A / 0.2 - 2.5 mm ² UL: 300 V / 18.5 A / AWG 26 - AWG 12	Box
BLF 5.08HC/02/90LH SN BK BX	1000640001	PCB plug-in connector, female plug, 5.08 mm, No. of poles: 2, 90°, PUSH IN spring connection, Clamping range, rated connection, max.: 3.31 mm ² , Box	4032248690831	90 pc(s).	IEC: 400 V / 24 A / 0.2 - 2.5 mm ² UL: 300 V / 18.5 A / AWG 26 - AWG 12	Box

BLT 5.08F


Female plugs with TOP screw connection for wire, with straight wire outlet and screw flange. The female plugs provide space for labelling and can be coded.

- 0.2 - 2.5 mm² (IEC) / 26 - 14 AWG (UL)
- 400 V (IEC) / 300 V (UL)
- 17 A (IEC) / 10 A (UL)

General ordering data

Type	Order No.	Version	GTIN (EAN)	Qty.	Product data	Packaging
BLT 5.08/02/180F SN OR BX	1843990000	PCB plug-in connector, female plug, 5.08 mm, No. of poles: 2, 180°, TOP connection, Clamping	4032248355914	90 pc(s).	IEC: 400 V / 17 A / 0.2 - 2.5 mm ² UL: 300 V / 13 A / AWG 26 - AWG 14	Box

Creation date October 15, 2013 4:35:56 PM CEST

**OMNIMATE Signal - series BL/SL 5.08
SL 5.08/02/90B 3.2SN OR BX**

Weidmüller Interface GmbH & Co. KG
 Klingenbergstraße 16
 D-32758 Detmold
 Germany
 Fon: +49 5231 14-0
 Fax: +49 5231 14-292083
 www.weidmueller.com

Mating connector (conditionally pluggable)

		range, rated connection, max.: 2.5 mm ² , Box		
BLT	1844220000	PCB plug-in connector, female plug, 5.08 mm, No. of poles: 2, 180°, TOP connection, Clamping range, rated connection, max.: 2.5 mm ² , Box	4032248356140 90 pc(s).	IEC: 400 V / 17 A / 0.2 - 2.5 mm ² Box UL: 300 V / 13 A / AWG 26 - AWG 14
5.08/02/180F				
SN BK BX				

BLZP 5.00/180 SN


Female plugs with clamping-yoke screw for wire connection with straight (180°) outlet direction. The female plugs provide space for labelling and can be coded. Can be fastened with flange or release latch. They also feature the integrated plus/minus screw, protection from under insertion of wire, and are delivered with open clamping yoke.

- 0.2 – 2.5 mm² (IEC) / 26-12 AWG (UL)
- 400 V (IEC) / 300 V (UL)
- 19 A (IEC) / 15 A (UL)

General ordering data

Type	Order No.	Version	GTIN (EAN)	Qty.	Product data	Packaging
BLZP	1954490000	PCB plug-in connector, female plug, 5.00 mm, No. of poles: 2, 180°, Clamping yoke connection, Clamping range, rated connection, max.: 4 mm ² , Box	4032248633203	100 pc(s).	IEC: 400 V / 19 A / 0.2 - 4 mm ² UL: 300 V / 15 A / AWG 30 - AWG 12	Box
5.00/02/180						
SN OR BX						
BLZP	1955570000	PCB plug-in connector, female plug, 5.00 mm, No. of poles: 2, 180°, Clamping yoke connection, Clamping range, rated connection, max.: 4 mm ² , Box	4032248634064	100 pc(s).	IEC: 400 V / 19 A / 0.2 - 4 mm ² UL: 300 V / 15 A / AWG 30 - AWG 12	Box
5.00/02/180						
SN BK BX						

OMNIMATE Signal - series BL/SL 5.08 SL 5.08/02/90B 3.2SN OR BX

Weidmüller Interface GmbH & Co. KG
Klingenbergstraße 16
D-32758 Detmold
Germany
Fon: +49 5231 14-0
Fax: +49 5231 14-292083
www.weidmueller.com

Mating connector (conditionally pluggable)

BLF 5.00/90F SN



Just as reliable as the tried-and-tested original, with innovation in detail: the BLF 5.00 – the PUSH-IN version of the BLZ 5.00 female plug – features a new connection system and a more compact design. Weidmüller's innovative PUSH-IN spring connection features a trend-setting, tool-free wire connection system that is simple to operate. In terms of versatility, the BLF 5.00 offers just as much as the older versions:

- The choice of three wire outlet directions offers you proven design flexibility for your applications.
- Four flange variations, including the patented release latch, so you can design the interlock based on the requirements of the user.

General ordering data

Type	Order No.	Version	GTIN (EAN)	Qty.	Product data	Packaging
BLF 5.00HC/02/90F SN BK BX	1979460000	PCB plug-in connector, female plug, 5.00 mm, No. of poles: 2, 90°, PUSH IN spring connection, Clamping range, rated connection, max.: 3.31 mm ² , Box	4032248674664	90 pc(s).	IEC: 400 V / 20 A / 0.2 - 2.5 mm ² UL: 300 V / 10 A / AWG 12 - AWG 26	Box
BLF 5.00HC/02/90F SN OR BX	1980640000	PCB plug-in connector, female plug, 5.00 mm, No. of poles: 2, 90°, PUSH IN spring connection, Clamping range, rated connection, max.: 3.31 mm ² , Box	4032248675692	90 pc(s).	IEC: 400 V / 20 A / 0.2 - 2.5 mm ² UL: 300 V / 10 A / AWG 12 - AWG 26	Box

BLZP 5.00/180LR SN



Female plugs with clamping-yoke screw for wire connection with straight (180°) outlet direction. The female plugs provide space for labelling and can be coded. Can be fastened with flange or release latch. They also feature the integrated plus/minus screw, protection from under insertion of wire, and are delivered with open clamping yoke.

- 0.2 – 2.5 mm² (IEC) / 26-12 AWG (UL)
- 400 V (IEC) / 300 V (UL)
- 19 A (IEC) / 15 A (UL)

General ordering data

Type	Order No.	Version	GTIN (EAN)	Qty.	Product data	Packaging
BLZP 5.00/02/180LR SN OR BX	1956370000	PCB plug-in connector, female plug, 5.00 mm, No. of poles: 2, 180°, Clamping yoke connection, Clamping	4032248635078	90 pc(s).	IEC: 400 V / 19 A / 0.2 - 4 mm ² UL: 300 V / 15 A / AWG 30 - AWG 12	Box

OMNIMATE Signal - series BL/SL 5.08 SL 5.08/02/90B 3.2SN OR BX

Weidmüller Interface GmbH & Co. KG
Klingenbergstraße 16
D-32758 Detmold
Germany
Fon: +49 5231 14-0
Fax: +49 5231 14-292083
www.weidmueller.com

Mating connector (conditionally pluggable)

		range, rated connection, max.: 4 mm ² , Box			
BLZP	1956600000	PCB plug-in connector, female plug, 5.00 mm, No. of poles: 2, 180°, Clamping yoke connection, Clamping range, rated connection, max.: 4 mm ² , Box	4032248635436 90 pc(s).	IEC: 400 V / 19 A / 0.2 - 4 mm ² UL: 300 V / 15 A / AWG 30 - AWG 12	Box
5.00/02/180LR					
SN BK BX					

BLZF 5.08/270



Female plugs with tension-clamp wire connection system. The female plugs provide space for labelling and can be coded.

- 0.2 - 2.5 mm² (IEC) / 26 - 12 AWG (UL)
- 400 V (IEC) / 300 V (UL)
- 16.5 A (IEC) / 10 A (UL)

General ordering data

Type	Order No.	Version	GTIN (EAN)	Qty.	Product data	Packaging
BLZF	1671940000	PCB plug-in connector, female plug, 5.08 mm, No. of poles: 2, 270°, Tension clamp connection, Clamping range, rated connection, max.: 3.31 mm ² , Box	4008190433659 180 pc(s).		IEC: 400 V / 16.5 A / 0.2 - 2.5 mm ² UL: 300 V / 10 A / AWG 26 - AWG 12	Box
5.08/02/270						
SN OR BX						
BLZF	1672170000	PCB plug-in connector, female plug, 5.08 mm, No. of poles: 2, 270°, Tension clamp connection, Clamping range, rated connection, max.: 3.31 mm ² , Box	4008190433888 180 pc(s).		IEC: 400 V / 16.5 A / 0.2 - 2.5 mm ² UL: 300 V / 10 A / AWG 26 - AWG 12	Box
5.08/02/270						
SN BK BX						

**OMNIMATE Signal - series BL/SL 5.08
SL 5.08/02/90B 3.2SN OR BX**

Weidmüller Interface GmbH & Co. KG
Klingenbergstraße 16
D-32758 Detmold
Germany
Fon: +49 5231 14-0
Fax: +49 5231 14-292083
www.weidmueller.com

Mating connector (conditionally pluggable)
BLZF 5.08/90


Female plugs with tension-clamp wire connection system. The female plugs provide space for labelling and can be coded.

- 0.2 - 2.5 mm² (IEC) / 26 - 12 AWG (UL)
- 400 V (IEC) / 300 V (UL)
- 16.5 A (IEC) / 10 A (UL)

General ordering data

Type	Order No.	Version	GTIN (EAN)	Qty.	Product data	Packaging
BLZF 5.08/02/90 SN OR BX	1670790000	PCB plug-in connector, female plug, 5.08 mm, No. of poles: 2, 90°, Tension clamp connection, Clamping range, rated connection, max.: 3.31 mm ² , Box	4008190432393	180 pc(s).	IEC: 400 V / 16.5 A / 0.2 - 2.5 mm ² UL: 300 V / 10 A / AWG 26 - AWG 12	Box
BLZF 5.08/02/90 SN BK BX	1671020000	PCB plug-in connector, female plug, 5.08 mm, No. of poles: 2, 90°, Tension clamp connection, Clamping range, rated connection, max.: 3.31 mm ² , Box	4008190432690	180 pc(s).	IEC: 400 V / 16.5 A / 0.2 - 2.5 mm ² UL: 300 V / 10 A / AWG 26 - AWG 12	Box

BLZ 5.08/180F


Female plugs with clamping-yoke screw connection for wire, with straight wire outlet and screw flange. The female plugs provide space for labelling and can be coded.

- 0.2 - 2.5 mm² (IEC) / 26 - 12 AWG (UL)
- 400 V (IEC) / 300 V (UL)
- 19 A (IEC) / 15 A (UL)

General ordering data

Type	Order No.	Version	GTIN (EAN)	Qty.	Product data	Packaging
BLZ 5.08/02/180F SN BK BX	1803040000	PCB plug-in connector, female plug, 5.08 mm, No. of poles: 2, 180°, Clamping yoke connection, Clamping range, rated connection, max.: 3.31 mm ² , Box	4032248258147	90 pc(s).	IEC: 400 V / 19 A / 0.2 - 2.5 mm ² UL: 300 V / 15 A / AWG 26 - AWG 12	Box
BLZ 5.08/02/180F SN OR BX	1802830000	PCB plug-in connector, female plug, 5.08 mm, No. of poles: 2, 180°, Clamping yoke connection, Clamping	4032248257676	90 pc(s).	IEC: 400 V / 19 A / 0.2 - 2.5 mm ² UL: 300 V / 15 A / AWG 26 - AWG 12	Box

Creation date October 15, 2013 4:35:56 PM CEST

**OMNIMATE Signal - series BL/SL 5.08
SL 5.08/02/90B 3.2SN OR BX**

Weidmüller Interface GmbH & Co. KG
Klingenbergstraße 16
D-32758 Detmold
Germany
Fon: +49 5231 14-0
Fax: +49 5231 14-292083
www.weidmueller.com

Mating connector (conditionally pluggable)

range, rated connection,
max.: 3.31 mm², Box

BLL 5.08/90



Female header for PCB mounting. The solder pin length is optimised for wave flow soldering.

- 400 V (IEC) / 300 V (UL)
- 23 A (IEC) / 15 A (UL)

General ordering data

Type	Order No.	Version	GTIN (EAN)	Qty.	Product data	Packaging
BLL	1622940000	PCB plug-in connector,	4008190194000	180 pc(s).	IEC: 400 V / 23 A	Box
5.08/02/90		female header, closed side,			UL: 300 V / 15 A	
3.2 SN OR BX		Solder connection, 5.08 mm, No. of poles: 2, 90°, Solder pin length (l): 3.2 mm, tinned, Orange, Box				

