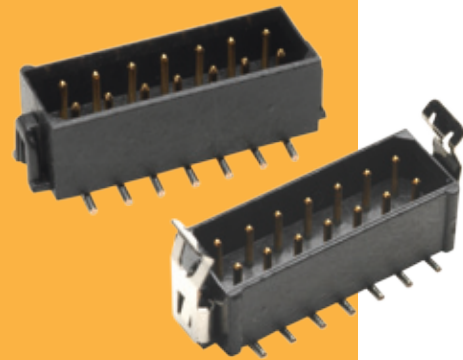


Male Vertical Surface Mount

- ❖ Contact datamate@harwin.com for tape & reel options.
- ❖ Optional pick and place cap.
- ❖ Mates with female connectors on pages 21 to 24.
- ❖ Gull wing SMT tails simplify inspection process.



DATAMATE L-TEK

SINGLE ROW	CALCULATION	DOUBLE ROW	CALCULATION
	A B + 5.60		A B + 5.60
	B (Total no. of contacts - 1) x 2		B Total no. of contacts - 2
<p>Latches (when fitted) add 0.5mm to overall length 'A'</p> <p>Recommended PC Board Pattern</p>		<p>Latches (when fitted) add 0.5mm to overall length 'A'</p> <p>Recommended PC Board Pattern</p>	

HOW TO ORDER

M80 - X 2 X XX XX P

SERIES CODE	
ROWS	
9	Single Row
8	Double Row
TYPE	
6	Unlatched
7	Friction Latch
8	Locking Latch

TOTAL NO. OF CONTACTS	
02 to 07, 17, 22	Single Row
04, 06, 08, 10, 12, 14, 16, 18, 20, 26, 34, 44	Double Row

PICK AND PLACE CAP	
BLANK	No cap
P	Pick and place cap

FINISH	
22	Gold + Tin/Lead
42	Gold + Tin
45	Gold

All dimensions in mm.