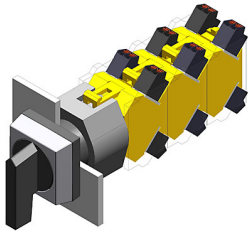


EAO – Your Expert Partner for Human Machine Interfaces

704.294.0 - Selector switch actuator 3 positions, long lever

704.294.0 - Selector switch actuator 3 positions, long lever



Attention: The preview is based on a sample product. This can differ from your current configuration.

Mounting

Mounting cut-out
Design Ø 22.5 mm
raised

Front

Front dimension 30 x 30 mm
Front shape square
Front bezel material Plastic
Front bezel colour grey

Other Attributes

Weight 0.034 kg

Operating-/Indication part

Lever material Plastic
Lever colour black
Switching angle B = 42° / 42°

IP-Rating

Front protection IP 65

Actuator

Switching action Momentary - Rest - Momentary

Switching element

Rotary positions 3

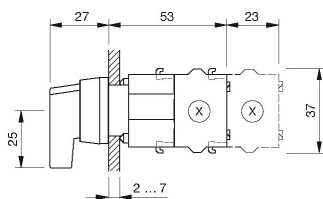
Function

Selector switch

EAO – Your Expert Partner for Human Machine Interfaces

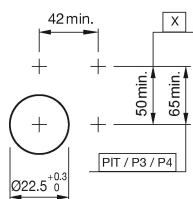
704.294.0 - Selector switch actuator 3 positions, long lever

Dimensions



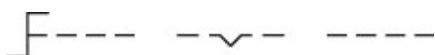
X = Screw terminal

Mounting cut-outs

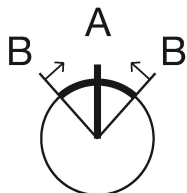


PIT = Push-in terminal

Wiring diagram



Switching positions



Additional information

Max. 3 switching elements can be clipped on

Legend

Switching action: A = Rest, B = Momentary