

ADSL2+ Modem Router

TD-8840T

⦿ Features:

- High speed DSL modem provides up to 24Mbps downstream speed
- Built-in switch connects four local PCs directly, and daisy-chain out to more hubs and switches as your network grows
- Live Parental Controls allow parents or administrators to establish restricted access policies for children or staff
- IP based Bandwidth Control makes it easier for you to manage the bandwidth of devices that connected to the modem router
- Easy Setup Assistant¹ with multi-language support provides a quick & hassle free installation
- SPI and NAT firewall protects end-user devices from potential attacks from the Internet
- Interface Grouping binds specific LAN ports with PVCs for an enjoyable IPTV² experience
- 4000V Lightning Protection helps your device to avoid the damage of tough thunderstorms



⦿ Description:

ADSL2/2+ Ethernet Modem Router with 4-Port Switch TD-8840T is a 2-in-1 device that combines the functions of a DSL modem and 4-port 10/100Mbps Ethernet router, brings you high-speed Internet connectivity to a home or small office. With our TD-8840T, you can easily create a wired network to share your high-speed Internet connection, documents, photos, music with up to four computers or devices.

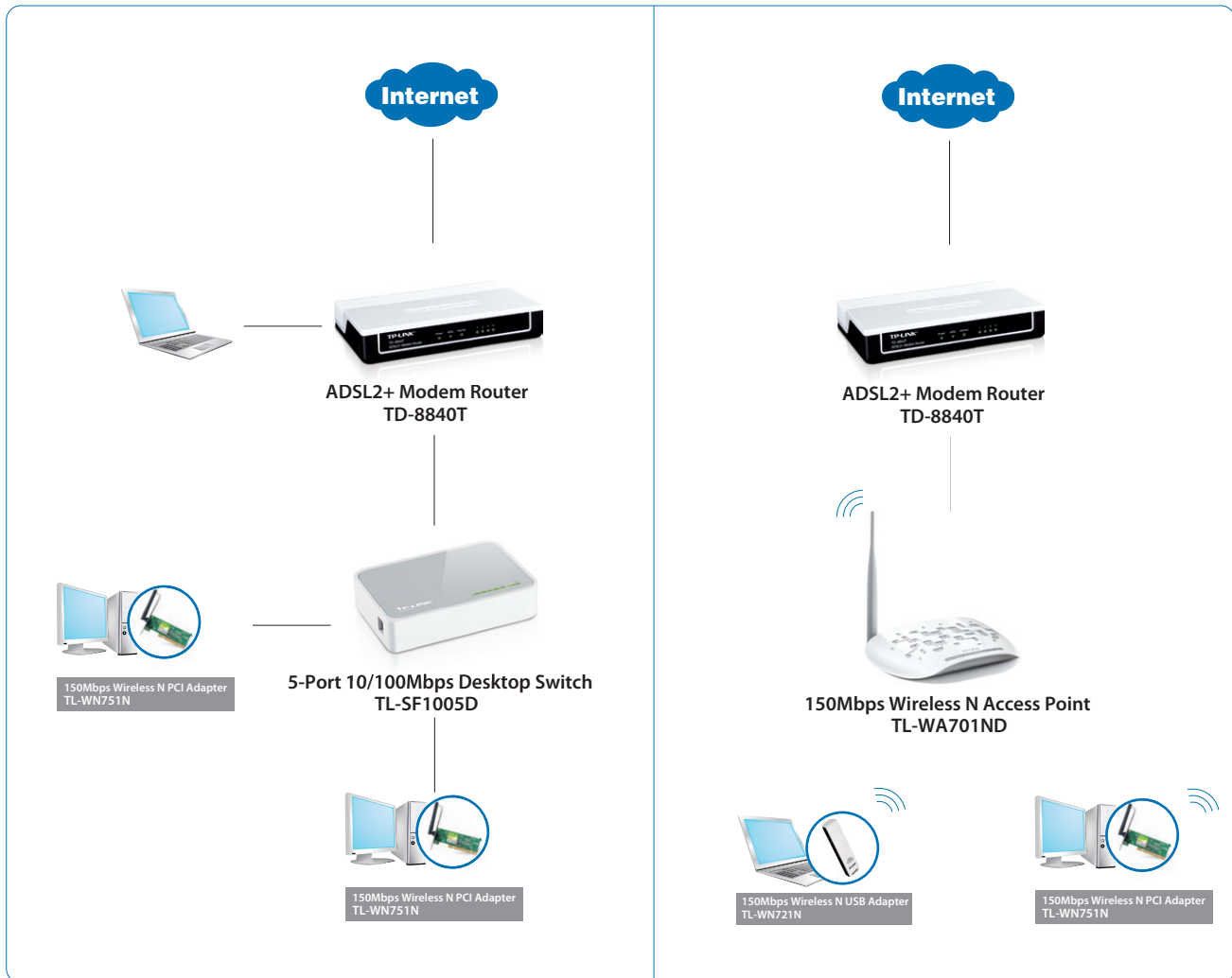
¹ The Easy Setup Assistant utility supports Windows 2000/XP/Vista and Windows 7 operating system at present.

² IPTV application may require subscribing to IPTV services from an ISP.

Specifications:

HARDWARE FEATURES	
Interface	4 10/100Mbps RJ45 Ports 1 RJ11 Port
Bouton	1 Power On/Off Switch
External Power Supply	9VDC/0.6A
IEEE Standards	IEEE 802.3, 802.3u
ADSL Standards	Full-rate ANSI T1.413 Issue 2, ITU-T G.992.1(G.DMT), ITU-T G.992.2(G.Lite) ITU-T G.994.1 (G.hs), ITU-T G.995.1 , ITU-T G.996.1, ITU-T G.997.1, ITU-T K.2.1
ADSL2 Standards	ITU-T G.992.3 (G.dmt.bis), ITU-T G.992.4 (G.lite.bis)
ADSL2+ Standards	ITU-T G.992.5
Dimensions (W x D x H)	6.5*4.3*1.1 in.(165*108*28mm)
SOFTWARE FEATURES	
Quality of Service	QoS Remarking based on IPP/ToS, DSCP and 802.1p
Port Forwarding	Virtual server, Port Triggering, DMZ
VPN Pass-Through	PPTP, L2TP, IPSec Pass-through
ATM/PPP Protocols	ATM Forum UNI3.1/4.0, PPP over ATM (RFC 2364), PPP over Ethernet (RFC2516), IPoA (RFC1577/2225), Parental Control IP Based Bandwidth Control
Advanced Features	Traffic Shaping(ATM QoS) UBR, CBR, VBR-rt, VBR-nrt; Dynamic Host Configuration Protocol (DHCP), DHCP relay; Network Address Translation (NAT); Static Routing, RIP v1/v2 (optional); DNS Relay, DDNS IGMP Multicast, UPnP
Security	NAT Firewall, MAC /IP /Application/URL Filtering
Management	Web Based Configuration(HTTP), Remote management, Telnet management, SNMP v1/2c, SNMP over EOC, Web Based Firmware Upgrade, Diagnostic Tools
OTHERS	
Certification	CE, FCC, RoHS
System Requirements	Microsoft® Windows® 98SE, NT, 2000, XP, Vista™ or Windows 7, MAC® OS, NetWare®, UNIX® or Linux.
Environment	Operating Temperature: 0°C~40°C (32°F~104°F) Storage Temperature: -40°C~70°C (-40°F~158°F) Operating Humidity: 10%~90% non-condensing Storage Humidity: 5%~90% non-condensing

Diagram:



Package:

- ADSL2+ Modem Router TD-8840T
- Power Adapter
- External splitter
- RJ-11 Telephone Line
- RJ-45 Ethernet Cable
- Resource CD
- Quick Installation Guide

Related Products:

- 150Mbps Wireless N USB Adapter TL-WN721N
- 150Mbps Wireless N PCI Adapter TL-WN751N
- 150Mbps Wireless N Access Point TL-WA701ND
- 5-Port 10/100Mbps Desktop Switch TL-SF1005D