

DATA SHEET

RM8

RM cores and accessories

Product specification
Supersedes data of November 1997
File under Ferrite Ceramics, MA01

1999 Dec 23

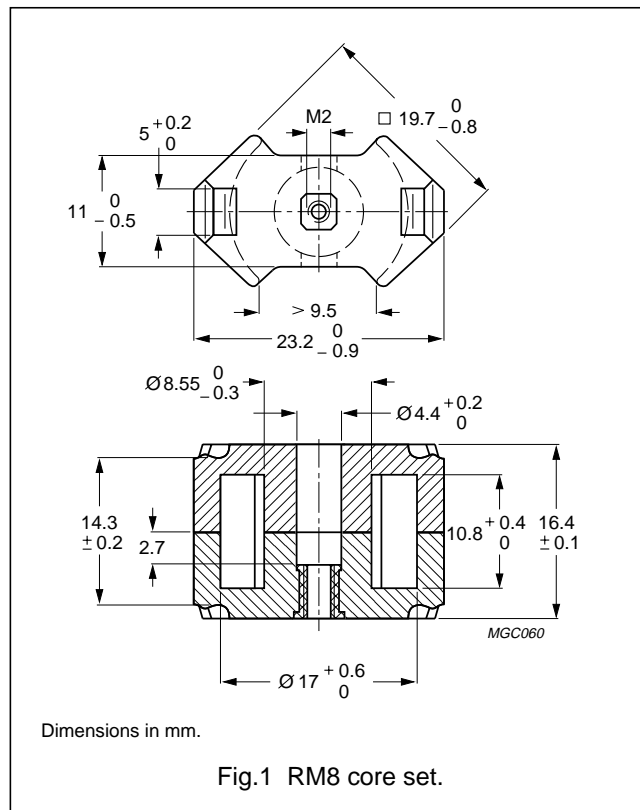
RM cores and accessories

RM8

CORE SETS

Effective core parameters

SYMBOL	PARAMETER	VALUE	UNIT
$\Sigma(I/A)$	core factor (C1)	0.683	mm ⁻¹
V_e	effective volume	1850	mm ³
l_e	effective length	35.5	mm
A_e	effective area	52.0	mm ²
A_{min}	minimum area	39.5	mm ²
m	mass of set	≈10.9	g



Core sets for filter applications

Clamping force for A_L measurements, 60 ±30 N.

GRADE	A_L (nH)	μ_e	AIR GAP (μ m)	TYPE NUMBER (WITH NUT)	TYPE NUMBER (WITHOUT NUT)
3D3	100 ±3%	≈54	≈750	RM8-3D3-E100/N	RM8-3D3-E100
	160 ±3%	≈87	≈400	RM8-3D3-E160/N	RM8-3D3-E160
	1240 ±25%	≈670	≈0	—	RM8-3D3
3H3	250 ±3%	≈135	≈210	RM8-3H3-A250/N	RM8-3H3-A250
	315 ±3%	≈170	≈160	RM8-3H3-A315/N	RM8-3H3-A315
	400 ±3%	≈220	≈130	RM8-3H3-A400/N	RM8-3H3-A400
	630 ±5%	≈340	≈100	RM8-3H3-A630/N	RM8-3H3-A630
	2850 ±25%	≈1540	≈0	—	RM8-3H3

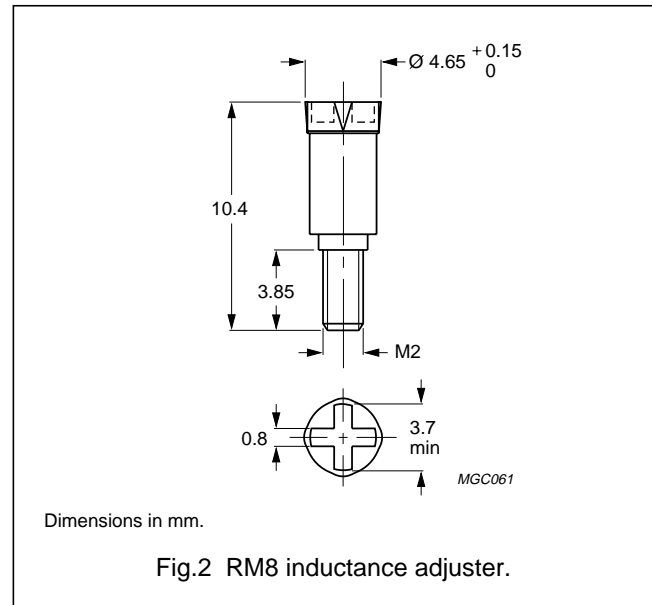
RM cores and accessories

RM8

INDUCTANCE ADJUSTERS

General data

PARAMETER	SPECIFICATION
Material of head and thread	polypropylene (PP), glass fibre reinforced
Maximum operating temperature	125 °C



Inductance adjuster selection chart

GRADE	A_L (nH)	TYPES FOR LOW ADJUSTMENT	$\Delta L/L$ % ⁽¹⁾	TYPES FOR MEDIUM ADJUSTMENT	$\Delta L/L$ % ⁽¹⁾	TYPES FOR HIGH ADJUSTMENT	$\Delta L/L$ % ⁽¹⁾
3H3	63	–	–	–	–	ADJ-P22/RM8-RED	24
	100	–	–	ADJ-P22/RM8-RED	16	ADJ-P22/RM8-ORANGE	21
	160	–	–	ADJ-P22/RM8-ORANGE	14	ADJ-P22/RM8-YELLOW	18
	250	ADJ-P22/RM8-RED	7	ADJ-P22/RM8-YELLOW	12	ADJ-P22/RM8-WHITE	18
	315	ADJ-P22/RM8-YELLOW	9	ADJ-P22/RM8-WHITE	13	ADJ-P22/RM8-BROWN	21
	400	ADJ-P22/RM8-YELLOW	7	ADJ-P22/RM8-WHITE	10	ADJ-P22/RM8-BROWN	15
	630	ADJ-P22/RM8-YELLOW	4	ADJ-P22/RM8-BROWN	8	ADJ-P22/RM8-BLACK	13
3D3	63	–	–	–	–	ADJ-P22/RM8-RED	23
	100	–	–	ADJ-P22/RM8-RED	15	ADJ-P22/RM8-ORANGE	22
	160	–	–	ADJ-P22/RM8-ORANGE	14	ADJ-P22/RM8-YELLOW	17

Note

1. Maximum adjustment range.

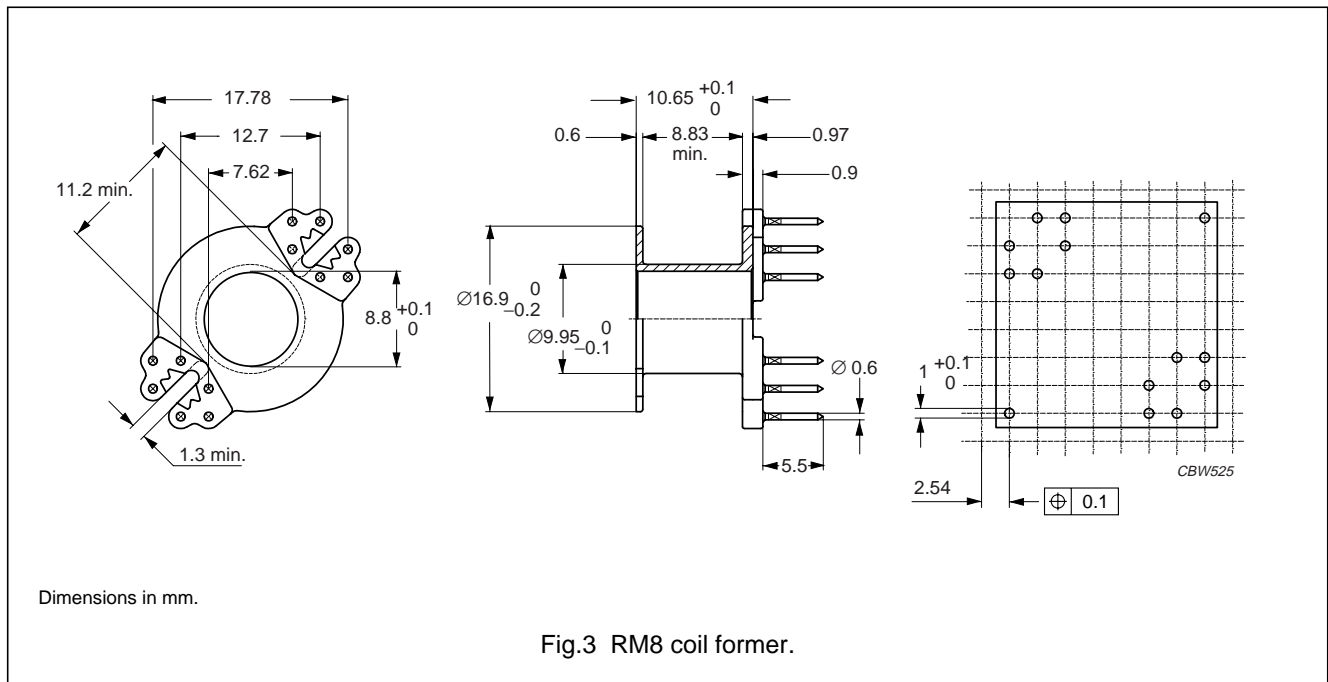
RM cores and accessories

RM8

COIL FORMER

General data

PARAMETER	SPECIFICATION
Coil former material	unsaturated polyester (UP), glass-reinforced, flame retardant in accordance with UL 94V-0; UL file number E61040 (M)
Pin material	copper-tin alloy (CuSn), tin-lead alloy (SnPb) plated
Maximum operating temperature	180 °C, IEC 60085 class H
Resistance to soldering heat	"IEC 60068-2-20", Part 2, Test Tb, method 1B, 350 °C, 3.5 s
Solderability	"IEC 60068-2-20", Part 2, Test Ta, method 1



Winding data for RM8 coil former

NUMBER OF SECTIONS	NUMBER OF PINS	PIN POSITIONS USED	AVERAGE LENGTH OF TURN (mm)	WINDING AREA (mm ²)	WINDING WIDTH (mm)	TYPE NUMBER
1	8	1, 2, 5, 6, 7, 8, 11, 12	42	30	9.1	CSV-RM8-1S-8P-G
1	12	all	42	30	9.1	CSV-RM8-1S-12P-G
2	8	1, 2, 5, 6, 7, 8, 11, 12	42	2 × 13.5	2 × 4.3	CSV-RM8-2S-8P-G
2	12	all	42	2 × 13.5	2 × 4.3	CSV-RM8-2S-12P-G

RM cores and accessories

RM8

MOUNTING PARTS

General data

ITEM	SPECIFICATION
Clamping force	≈30 N
Clip material	steel
Clip plating	silver (Ag)
Solderability	"IEC 60068-2-20", Part 2, Test Ta, method 1
Type number	CLI/P-RM8

