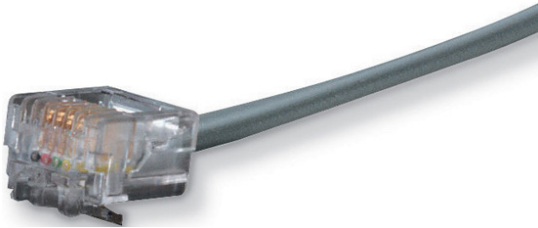


Black Box Products

Cables > Modular/Telephone Cables



RJ-11 Modular Cable, 4-Wire, Straight-Pinning, 25-ft. (7.6-m)

Flat satin 4-wire cabling for voice and data.

EL04MS-25

Extended Double Diamond™ Warranty Available
(Lifetime)

Product Highlights

- High-quality flat-satin cable for data and voice applications.
- Stranded conductor.
- Guaranteed for life!

Details

Description

RJ-11 Modular Cable, 4-Wire, Straight-Pinning, 25-ft. (7.6-m)

Quick Facts

- High-quality flat-satin cable for data and voice applications.
- Stranded conductor.
- Guaranteed for life!

Further Details

- All-purpose cables are for voice and data applications running up to 1 Mbps.
- Not recommended for Token Ring or Ethernet applications.

Tech Spec

Technical Specifications for RJ-11 Modular Cable, 4-Wire, Straight-Pinning, 25-ft. (7.6-m):

Cable Construction	— Gray flat satin, PVC
Conductor Gauge	— 28 AWG
Distance (Maximum)	— As per equipment specifications
Mutual Capacitance	— 22 pF/ft.
Resistance	— 45 ohms/1000 ft.
Connectors	— 4-wire

NOTE: The 4-Wire Cable (EL04M, Cross-Pinning) is for typical telephone use.