

Round Hole Panel Jacks

Type RSJ Standard Size

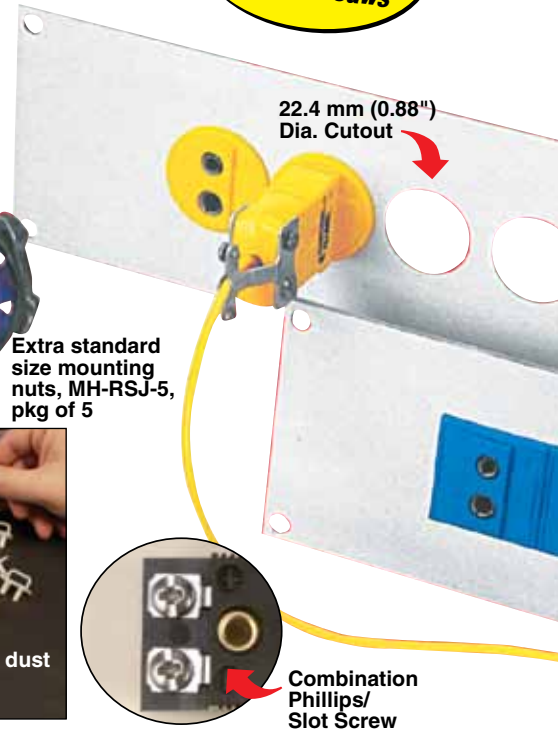
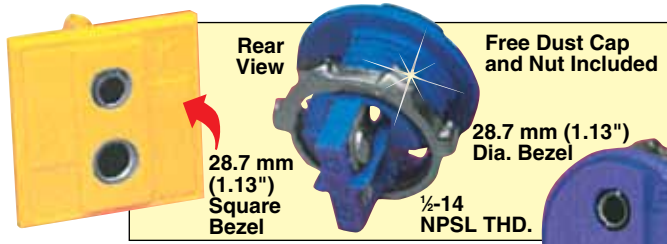
Type RMJ Miniature Size



See Page G-48 for Panel Punches and Hole Saws

Front Mount Hardware Included

Accepts Standard Size Connectors



To Order Visit newportUS.com/RSJ_RMJ for Pricing and Details

| Alloy Code | Color | Model Number | |
|------------|--------|--------------|------------|
| | | Square Face | Round Face |
| K | Yellow | RSJ-K-S | RSJ-K-R |
| T | Blue | RSJ-T-S | RSJ-T-R |
| J | Black | RSJ-J-S | RSJ-J-R |
| E | Purple | RSJ-E-S | RSJ-E-R |
| R/S | Green | RSJ-R/S-S | RSJ-R/S-R |
| U | White | RSJ-U-S | RSJ-U-R |

Ordering Example: RSJ-J-R, round face, round hole panel jack for use with Type J standard connector.
* Also available in male configurations.



- Standard Accepts All Industry Standard Size Connectors
- Miniature Accepts All Industry Miniature Size Connectors
- Mounts in Round or "D" Punch Holes
- Square or Round Bezel to Match Your Panel Components
- Heavy Duty Glass-Filled Nylon Rated to 220°C (425°F)
- Polarity Keyed
- Color-Coded
- No Filing Required

Easy Installation

No special tooling is required for installation. Just drill or punch a round hole in your panel and tighten the supplied nut. Ideal for single circuit applications where the connector must blend with existing instrumentation. Thermocouple circuits can be added to existing panels with only minimal interruption of operations. A choice of either square or round face is available to match the design lines of your installation. Thermocouple grade alloys used to form the contacts preserve the accuracy of the circuit even in changing ambient temperatures.

We make running changes when technical advances allow. Check at time of ordering for additional features.

| Discount Schedule | |
|-------------------|-----|
| 1-10 | Net |
| 11-49 | 5% |
| 50-99 | 10% |
| 100-999 | 15% |
| 1000-4999 | 20% |
| 5000 and over | 25% |

Accepts Miniature Size Connectors

To Order Visit newportUS.com/RSJ_RMJ for Pricing and Details

| Alloy Code | Color | Model Number | |
|------------|--------|--------------|------------|
| | | Square Face | Round Face |
| K | Yellow | RMJ-K-S | RMJ-K-R |
| T | Blue | RMJ-T-S | RMJ-T-R |
| J | Black | RMJ-J-S | RMJ-J-R |
| E | Purple | RMJ-E-S | RMJ-E-R |
| R/S | Green | RMJ-R/S-S | RMJ-R/S-R |
| U | White | RMJ-U-S | RMJ-U-R |

Ordering Example: RMJ-K-S, square face, round hole panel jack for use with Type K miniature connector.

