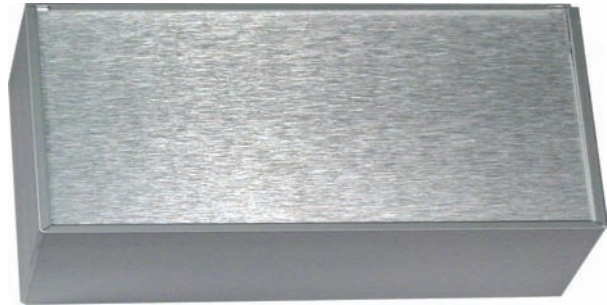




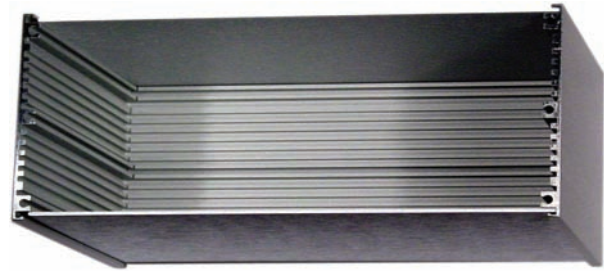
VectorPak™ Instrument Cases & Frame-Loc Rails™

Aluminum Instrument Cases

Versatile Multi-Mod™ cases are ideal for small case packaging of testers, controllers and other instruments. Brushed aluminum construction provides excellent RF attenuation and an attractive “finished” appearance. Kits include frame, top and bottom covers and hardware. Extruded two-piece frame assemblies quickly with self-tapping screws. Standard 0.062” cards slide into grooves in Frame-Loc Rails.



Model: W30-66-46B - closed

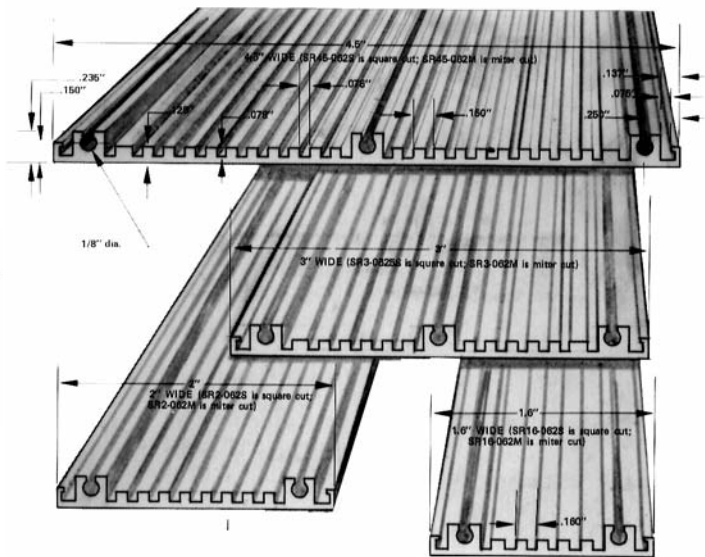


Model: W30-66-46B - open

Part No.	Width	Length	Height	Circuit Card Size Range
W45-10-66B	4.5"	10.00"	6.64"	9.88" x 6.50"
W45-10-46B	4.5"	10.00"	4.61"	9.88" x 4.50"
W45-86-46B	4.5"	8.61"	4.61"	8.50" x 4.50"
W45-66-46B	4.5"	6.61"	4.61"	6.50" x 4.50"
W30-10-66B	3.0"	10.00"	6.61"	9.88" x 6.50"
W30-86-46B	3.0"	8.61"	4.61"	8.50" x 4.50"
W30-66-46B	3.0"	6.61"	4.61"	6.50" x 4.50"
W20-66-46B	2.0"	6.61"	6.61"	6.50" x 4.50"
W20-46-31B	2.0"	4.61"	3.10"	4.50" x 2.98"
W16-31-31B	1.6"	3.10"	3.10"	2.98" x 2.98"

Frame-Loc Rails™ - for Cases or P.C. Board Racks & Carriers

Ideal for applications requiring quick, versatile packaging. Frame-Loc Rails™ can be cut or bent to form enclosures of virtually any size. Aluminum construction with 0.062” grooves accommodate most Vectorbord printed circuit boards. Four available widths. Standard length is 41”, shorter lengths can be ordered using table below. Standard finish is clear anodize. Attach rails at 90° with BR64A corner brackets.



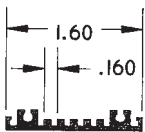
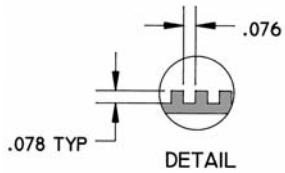
Ordering Table

SR 16 - 2 0 . 0 0 - S

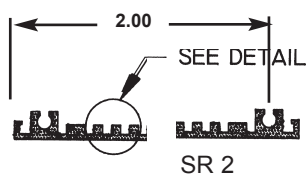
Width
 16 = 1.6"
 2 = 2.0"
 3 = 3.0"
 45 = 4.5"

Length (inches)

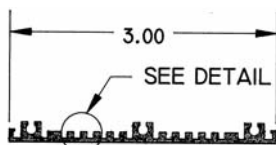
S = 90° (Square)
 M = 45° (Mitre)



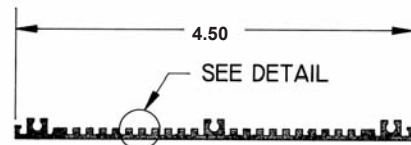
SR 16



SR 2



SR 3

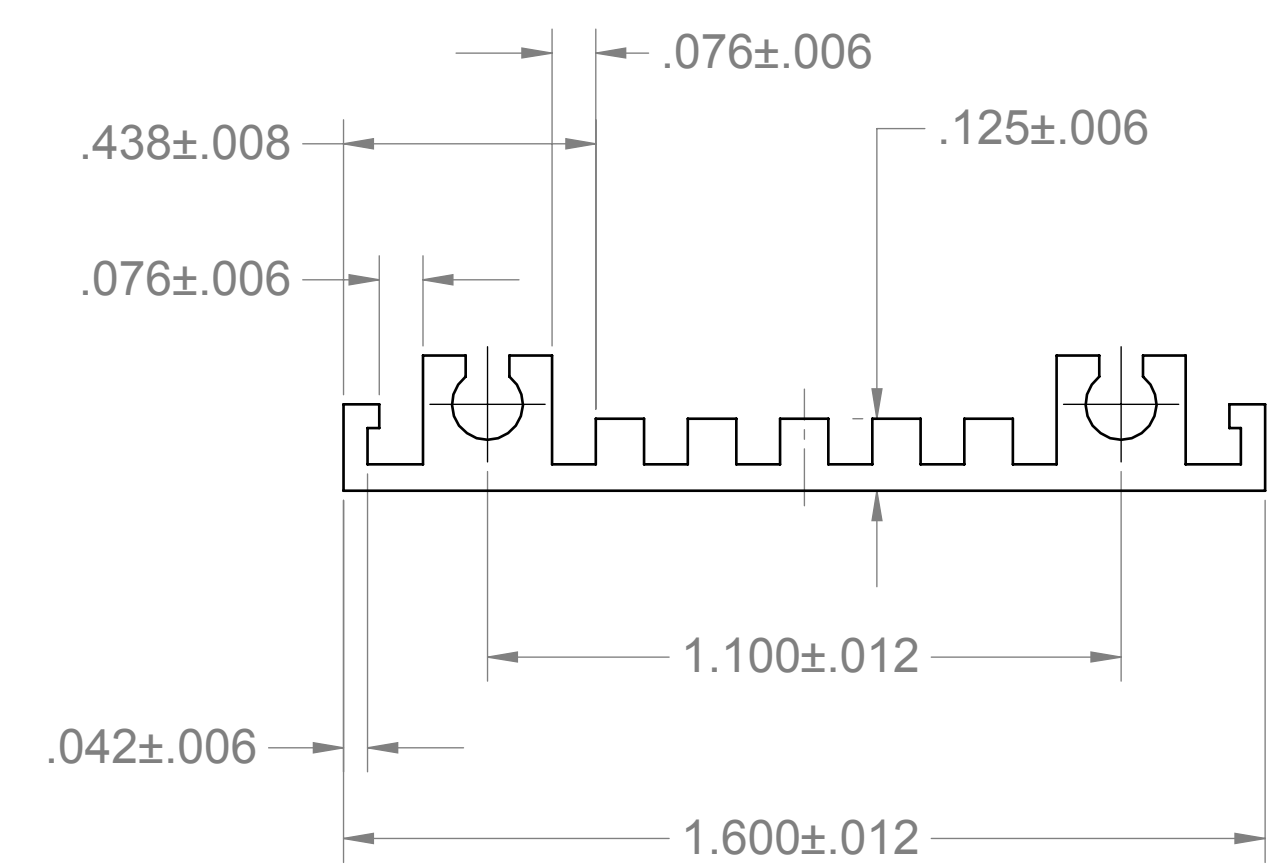


SR 45

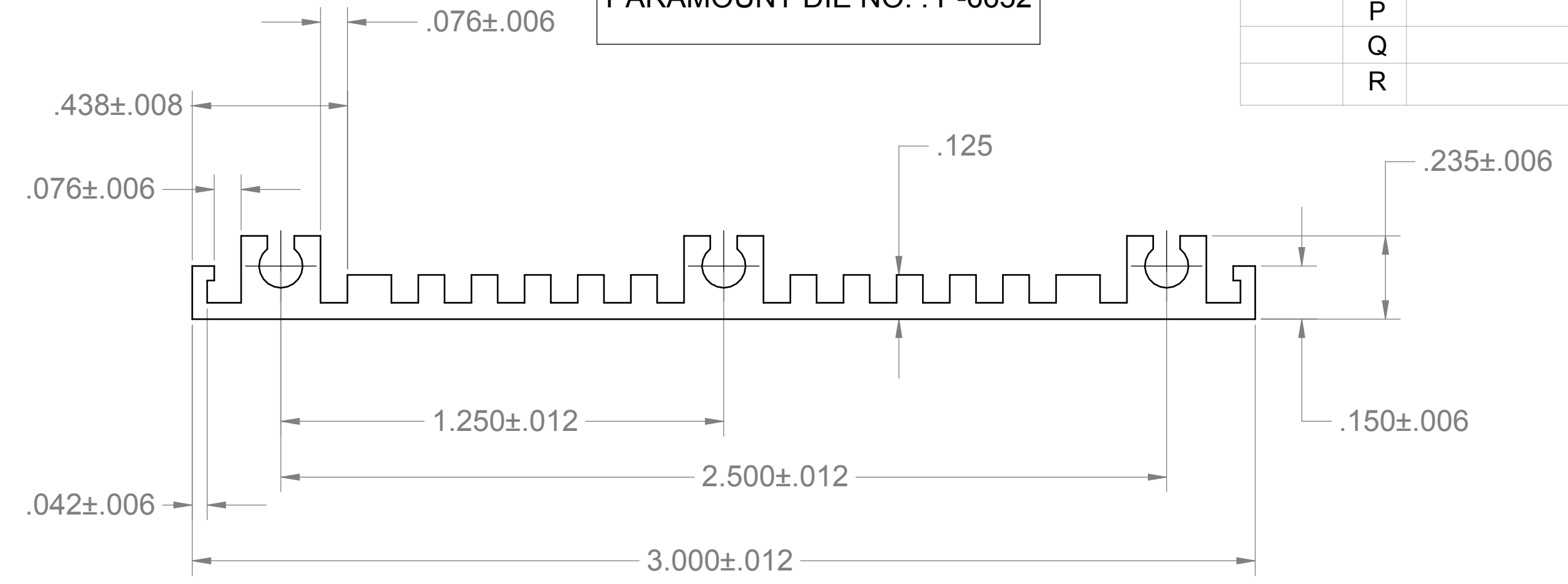
Specification subject to change without notice

REVISIONS				
ZONE	REV	DESCRIPTION	DATE	APPROVED
ALL	N	INC. ECO 2942	08/06/85	
	P	INC. ECO 3041	11/19/85	
	Q	EAR 1123	05/06/98	
	R	ADDED DIE NO(S).	10/21/09	

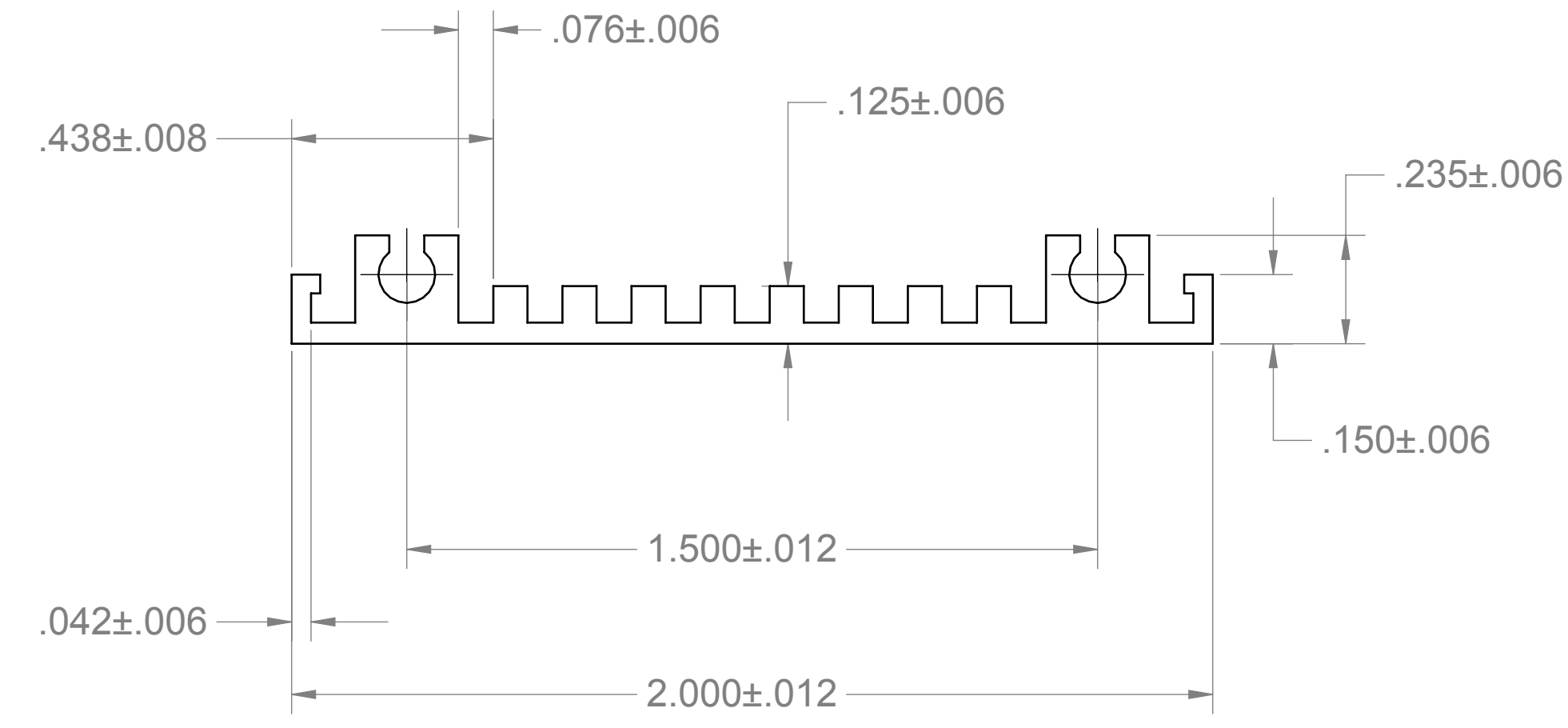
SR16-062
PARAMOUNT DIE NO. : P-6650



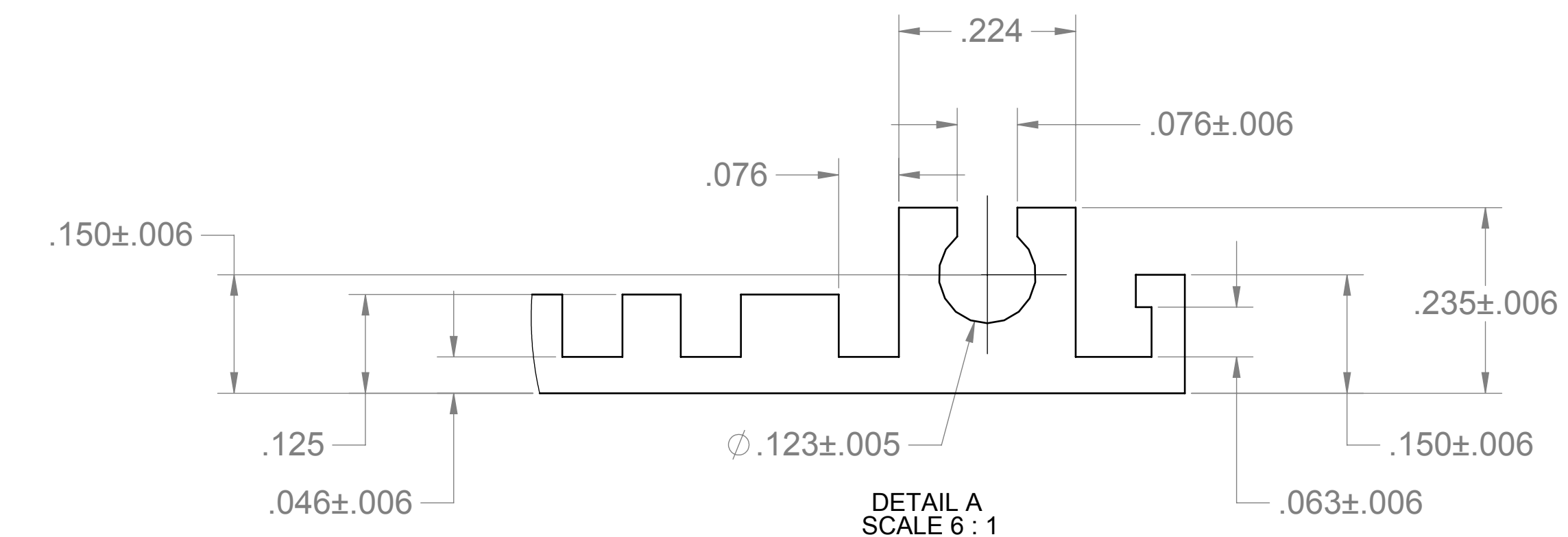
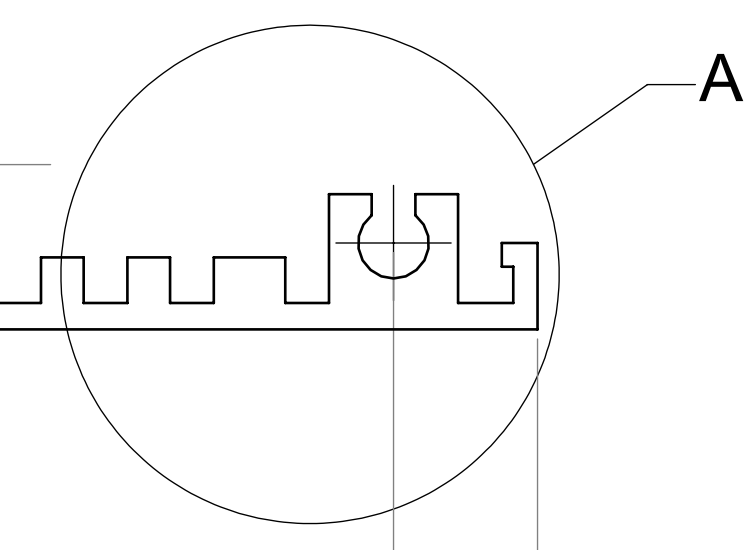
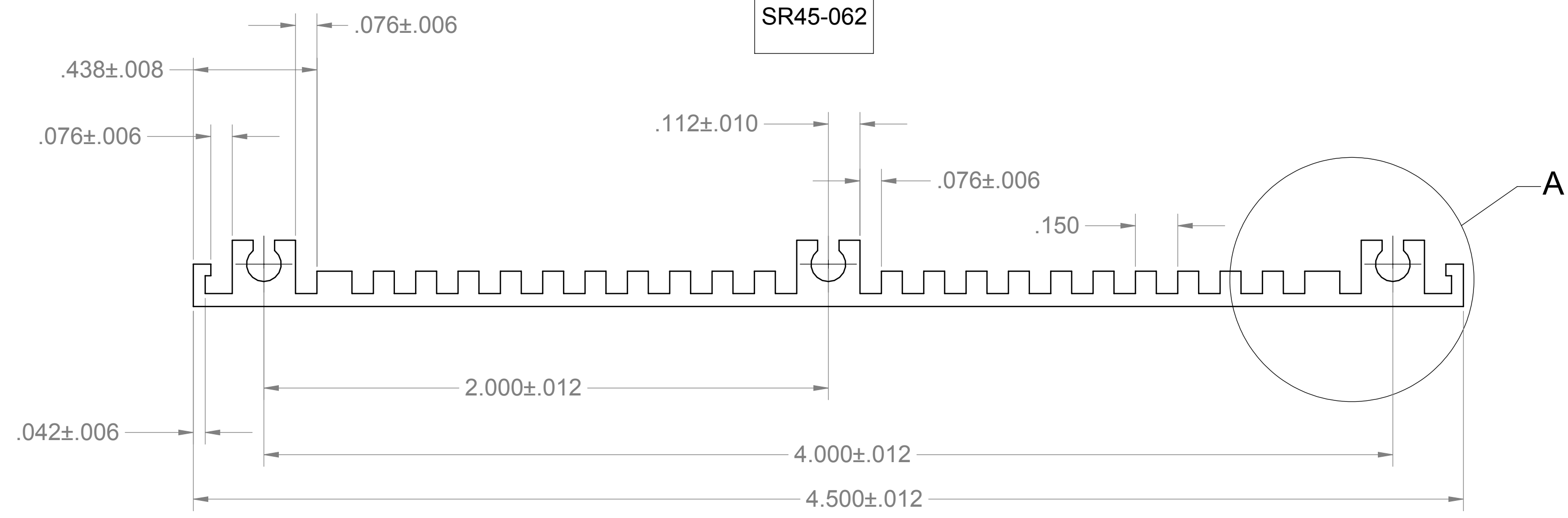
SR3-062
PARAMOUNT DIE NO. : P-6652



SR2-062
PARAMOUNT DIE NO. : P-6651



SR45-062



- 10. FINISH ANOD., CLEAR TYPE II, CLASS 1, IAW MIL-A-8625
- 9. GRAIN FINISH (PRIOR TO ANOD.)
- 8. PROTECT SURFACE DURING SHIPMENT TO AVOID MARKING & SCRATCHING (MAX. WEIGHT/BUNDLE : 250 LBS.)
- 7. TWIST : 2°/FT
- 6. MAX. R. ON ALL INTERNAL & EXTERNAL CORNERS : 0.010"
- 5. SURFACE TO BE STRAIGHT WITH IN 0.012"/FT
- 4. FLATNESS 0.015"/FT IN LENGTH, 0.004"/INCH IN WIDTH
- 3. EXTRUDED LENGTH : 7' - 2'(2' IS CUTED AT EACH END FOR ANODIZING CLAMPS)
- 2. EXTRUDED FINISH : #2(60 RMS)
- 1. MATERIAL : 6063-T52

NOTES : UNLESS OTHERWISE SPECIFIED

PART NO :	FINISH	10
SR16-062	ANOD.	
SR2-062	ANOD.	
SR3-062	ANOD.	
SR45-062	NONE	

PROPRIETARY AND CONFIDENTIAL
THE INFORMATION CONTAINED IN THIS DRAWING IS THE SOLE PROPERTY OF VECTOR ELECTRONICS & TECH., INC. ANY REPRODUCTION IN PART OR AS A WHOLE WITHOUT THE WRITTEN PERMISSION OF VECTOR ELECTRONICS & TECH., INC. IS PROHIBITED.

UNLESS OTHERWISE SPECIFIED DIMENSIONS ARE IN INCHES
TOLERANCES:
DEC .X ±
DEC .XX ±
DEC .XXX ±.006
FRACTIONS ±
ANGLES ±

MATERIAL	1
FINISH	10

APPROVALS	NAME	DATE
DRAWN	TRUSHAR	12/06/07
CHECKED		
ENGINEER		
QA		

THIRD ANGLE PROJECTION

VECTOR ELECTRONICS & TECHNOLOGY, INC
11115 VANOWEN ST., NORTH HOLLYWOOD, CA 91605

DETAIL EXTRUSION SIDE RAIL

SIZE	DWG. NO.	REV
D	M4211D5.1	R
SCALE: 2:1	CAGE CODE: 82893	SHEET 1 OF 1