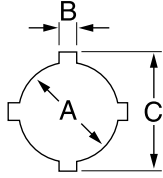


# SPECIAL APPLICATION PUNCHES

## Oiltight Punches with Notches

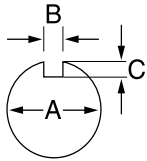
Other oiltight sizes without notches available in standard, Slug-Buster® and Slug-Splitter® designs.



| HOLE SIZE |      |       |      |     |      | MAXIMUM CAPACITY MILD STEEL |     | OPERATION TYPE | CAT./UPC NO                                          |       |              |             |             | MINIMUM PILOT HOLE |      | WEIGHT LBS. KG. | OPTIONAL ADAPTER FOR HYDRAULIC DRIVERS |        |
|-----------|------|-------|------|-----|------|-----------------------------|-----|----------------|------------------------------------------------------|-------|--------------|-------------|-------------|--------------------|------|-----------------|----------------------------------------|--------|
| INCH      |      |       | MM   |     |      | GA                          | MM  |                | PUNCH UNIT (INCLUDES PUNCH, DIE, DRAW STUD AND NUTS) |       | BB DRIVE NUT | COUNTER NUT | INCH        | MM                 |      |                 |                                        |        |
| A         | B    | C     | A    | B   | C    |                             |     |                | PUNCH                                                | DIE   | DRAW STUD    | DRIVE NUT   | COUNTER NUT |                    |      |                 |                                        |        |
| .875      | .125 | 1.000 | 22.5 | 3.2 | 25.4 | 14                          | 2.0 | Hand/Hydr.     | 60238                                                | 60239 | 60250        | 60117       | 60165       | 60258              | .625 | 15.9            | 2.1 .95                                | 601670 |
| 1.210     | .190 | 1.380 | 30.5 | 4.8 | 36.0 | 10                          | 3.5 | Hand/Hydr.     | 60242                                                | 60243 | 60249        | 60117       | 60165       | 60258              | .625 | 15.9            | 2.7 1.2                                | 601670 |

For maximum draw stud life, Greenlee recommends the use of battery or hydraulic drivers.

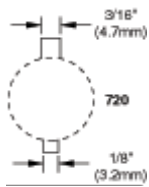
## Key Punches



| HOLE SIZE |       |      |      |     |     | MAXIMUM CAPACITY MILD STEEL |     | OPERATION TYPE | CAT./UPC NO                                          |       |              |             |             | MINIMUM PILOT HOLE |      | WEIGHT LBS. KG. | OPTIONAL ADAPTER FOR HYDRAULIC DRIVERS |        |
|-----------|-------|------|------|-----|-----|-----------------------------|-----|----------------|------------------------------------------------------|-------|--------------|-------------|-------------|--------------------|------|-----------------|----------------------------------------|--------|
| INCH      |       |      | MM   |     |     | GA                          | MM  |                | PUNCH UNIT (INCLUDES PUNCH, DIE, DRAW STUD AND NUTS) |       | BB DRIVE NUT | COUNTER NUT | INCH        | MM                 |      |                 |                                        |        |
| A         | B     | C    | A    | B   | C   |                             |     |                | PUNCH                                                | DIE   | DRAW STUD    | DRIVE NUT   | COUNTER NUT |                    |      |                 |                                        |        |
| 0.481     | 0.055 | .030 | 12.2 | 1.4 | .8  | 16                          | 1.5 | Hand/Hydr.     | 60101                                                | 60102 | 60103        | 60115       | 60120       | 05244              | .375 | 9.5             | .88 .4                                 | 601140 |
| 1.171     | 0.123 | .097 | 29.7 | 3.1 | 2.5 | 14                          | 2.0 | Hand/Hydr.     | 60104                                                | 60105 | 60106        | 60166       | 60165       | 60258              | .875 | 23.8            | 2.3 1.0                                | 601670 |
| 1.265     | 0.156 | .097 | 32.1 | 4.0 | 2.5 | 14                          | 2.0 | Hand/Hydr.     | 60107                                                | 60108 | 60109        | 60166       | 60165       | 60258              | .875 | 23.8            | 2.4 1.1                                | 601670 |
| 1.328     | 0.102 | .097 | 33.7 | 2.6 | 2.5 | 14                          | 2.0 | Hand/Hydr.     | 60110                                                | 60111 | 60112        | 60166       | 60165       | 60258              | .875 | 23.8            | 2.4 1.1                                | 601670 |

For use with any Greenlee Hydraulic Driver or Battery-Powered Driver. For maximum draw stud life, Greenlee recommends the use of battery or hydraulic drivers

## 720 Keyway Punch



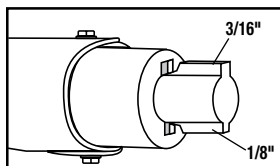
NOTE: Not for Stainless Steel

- Eliminates time-consuming hand sawing and filing when making keyways for push-button switches.
- Use as a nibbler to make wider or deeper keyways.
- Punches 1/8" (3.2 mm) or 3/16" (4.8 mm) keyways for 7/8" (22.5 mm) or 1-7/32" (30.5 mm) push-button holes.
- Canadian Patent No. 1,172,435.

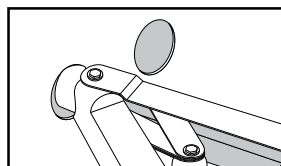
### SPECIFICATIONS

Operation Manual  
Capacity 10 gauge (3.5 mm) mild steel

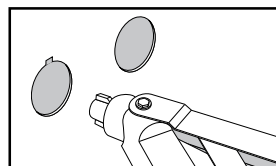
| CAT NO. | UPC NO. | DESCRIPTION  | WEIGHT |      |
|---------|---------|--------------|--------|------|
|         |         |              | LBS.   | KG.  |
| 720     | 26534   | Keyway Punch | 2.8    | 1.27 |
| 26534   | 26536   | Punch        |        |      |
| 26538   | 26538   | Die          |        |      |



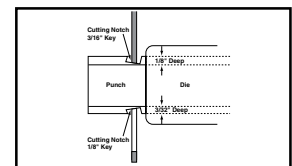
1. Locate proper cutting notch on the cutting head.



2. Place cutting notch inside edge of hole and cut keyway.



3. Withdraw the punch.



4. Use as a nibbler to make wider or deeper keyways.