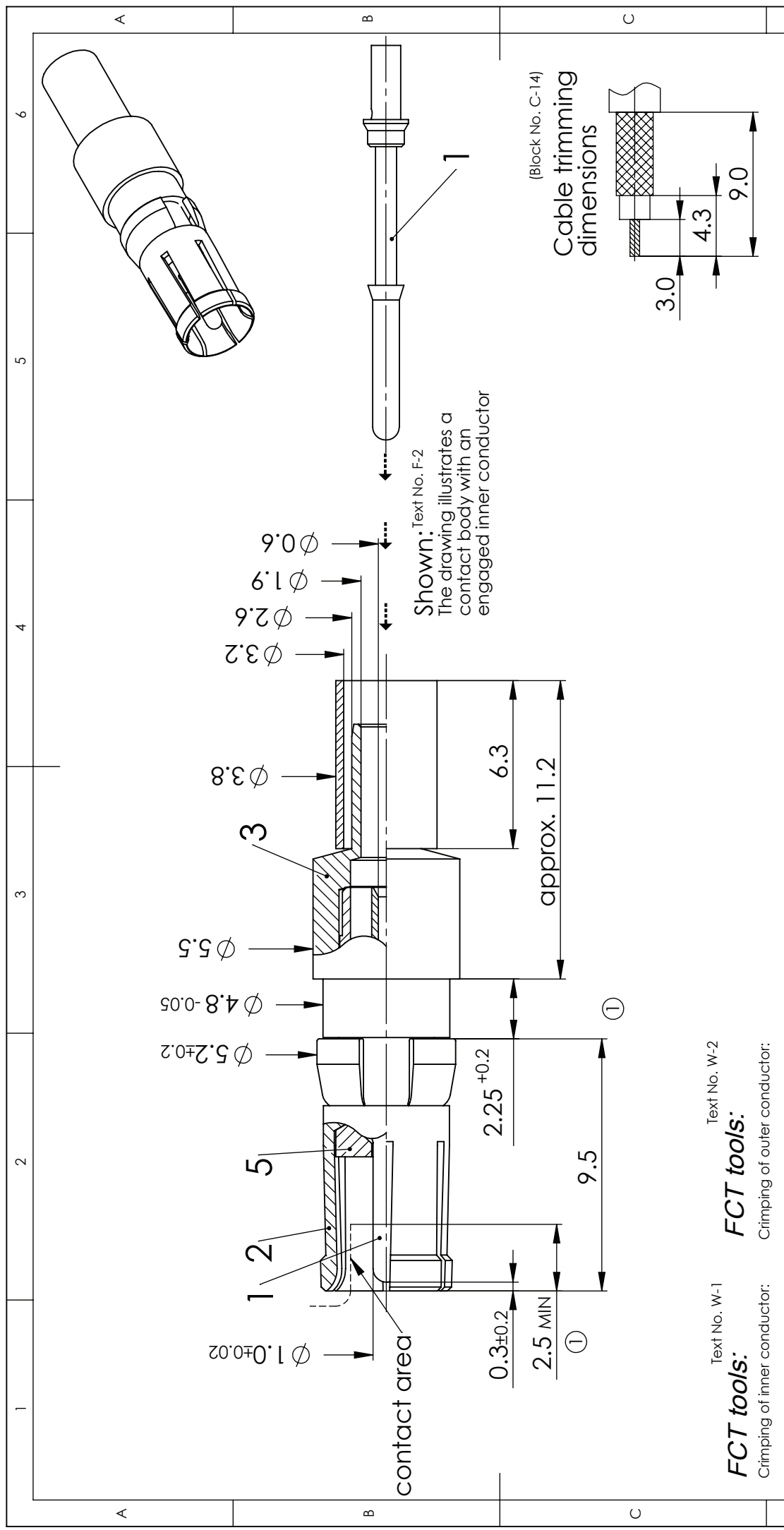


COMMENT:
 ALL RIGHTS ARE RESERVED BY US FOR THIS DRAWING. WITHOUT OUR PRIOR CONSENT,
 IT MAY NEITHER BE DUPLICATED NOR MADE AVAILABLE TO A THIRD PARTY,
 AND IT ALSO MAY NOT BE IMPROPERLY USED BY THE RECEIVER, OR A THIRD PARTY.



IMPEDANCE		75 Ohm		SCALE		5:1		CABLE		RG179BU, RG187AU, Belden 9221	
FOR		D-SUB		NAME / DATE		ffuhrmann 24-07-2006		DATA SHEET			
DIMENSIONS IN MM				DRAWN		CHECKED					
MATERIAL + FINISH SEE EXTRA SHEET				SSC <pre>fct</pre>		17-10-2012					
UNLESS OTHERWISE SPECIFIED DIMENSIONS FOR REFERENCE ONLY				ORIGINAL: DIN A4-DRAWING AS A FILE				PART NO.		FMS002S	
REV.	DATE	INDEX		FCT group		www.fctgroup.com		REPLACEMENT FOR:		REV.	
2	16-10-2012	23305								2	
1										PAGE: 1/1	

Text No. W-1

FCT tools:

Crimping of inner conductor:
 Hand tool: M22520/2-01
 Locator: K1003
 Pneumatic crimp tool: WA22
 Locator: K1003
 Cable:
 AWG 24 / SEL. 5
 AWG 26 / SEL. 5
 AWG 28 / SEL. 4
 AWG 30 / SEL. 3

Text No. W-2

FCT tools:

Crimping of outer conductor:
 Hand tool: M22520/5-01
 Die: Y1535P cavity B
 Pneumatic crimp tool: HX23
 (replacement for PH4001) ②
 Extraction tool: DRK38