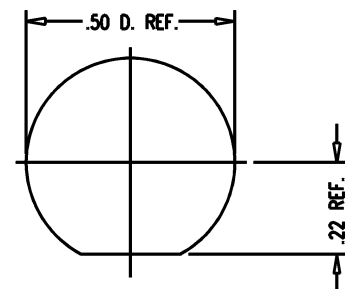
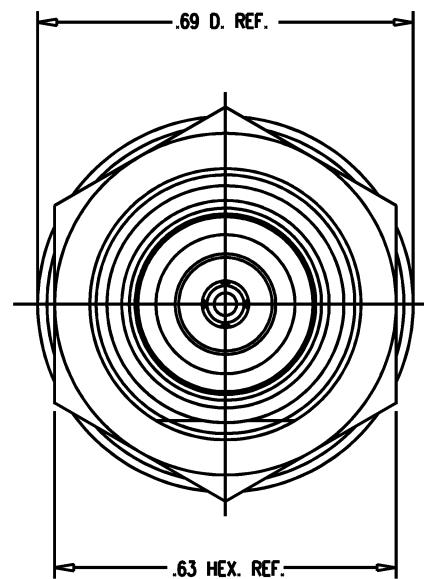
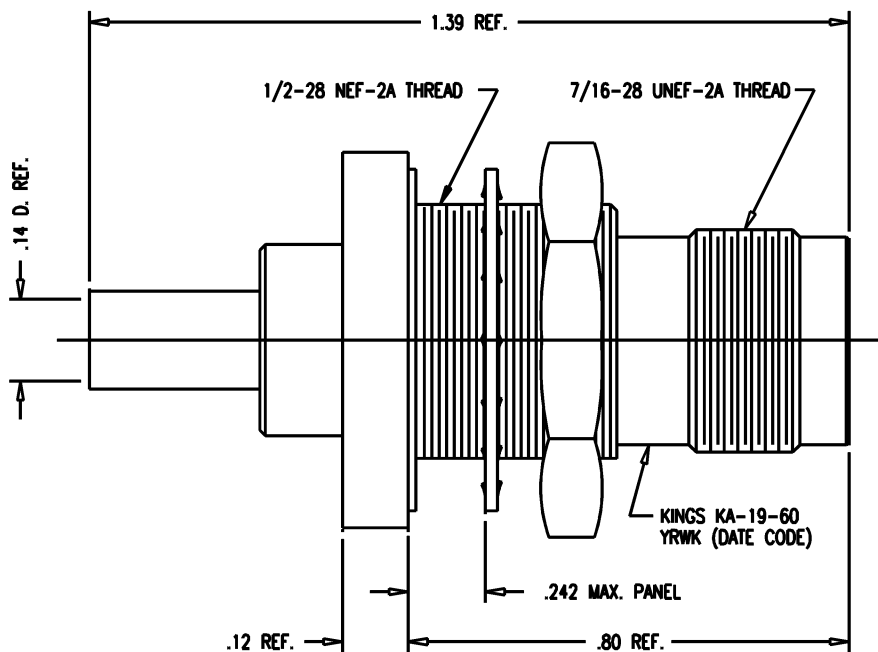


DASH NO.	M CODE	MADE FROM
----------	--------	-----------



GSD

KA-19-60

REVISIONS	
ISSUE	CHANGES
3	CN 37095 C REDRAWN KH 08/20/96
4	CN 37169 E PG 10/25/96
5	CN 37178 A KH 11/21/96
6	CN 37745 E HVN 01/14/99
7	CN 37893 E TML 09/10/99

KA1960S

NOTES:

- FOR USE WITH RG-174, 188, 188A & 316/U CABLES.
- FOR CABLING INSTRUCTIONS SEE CP-407.
- FOR CRIMPING USE DIE KTH 2032.
- INTERFACE PER MIL-STD-348, FIG. 313-2.
- MATERIALS:
 GASKETS: SILICONE RUBBER, QQ-R-765
 K-GRIP SLEEVE: COM. BRONZE, ASTM-B-135
 LOCKWASHER: PHOSPHOR BRONZE, ASTM-B-103
 INSULATOR: TEFLON, ASTM-D-4894
 CENTER CONTACT: BER. COPPER, ASTM-B-196
 ALL OTHER METAL PARTS: BRASS, ASTM-B16
- FINISHES:
 CENTER CONTACTS: SILVER PLATE PER QQ-S-365
 ALL OTHER METAL PARTS: KINGS TARNISH RESISTANT NICKEL FINISH (TR-5)
- ELECTRICAL CHARACTERISTICS:
 FREQUENCY RANGE: DC TO 11 GHz
 VOLTAGE RATING: 500 VRMS
 NOMINAL IMPEDANCE: 50 OHMS

SCALE 4:1	
APPROX SURFACE AREA	
USED ON	
REF:	
JACK, BLKHD, TNC	
DRAWN KH	DATE 08/20/96
DESIGN AR	DATE 08/21/96
APPR.	DATE

GSD

KINGS ELECTRONICS CO., INC. ROCK HILL, SOUTH CAROLINA 29730	
KA-19-60	