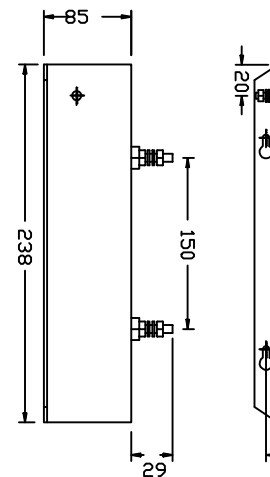
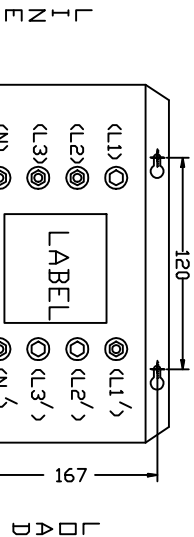
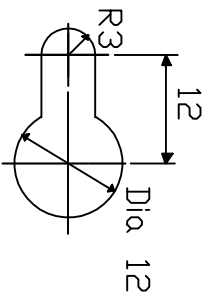
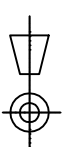
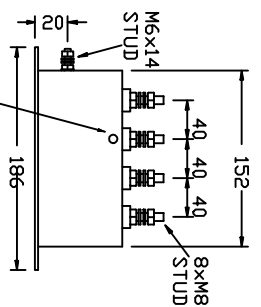


**MECHANICAL SPECIFICATION**



FIXING FOR SURGE ARRESTER (VSU4W)

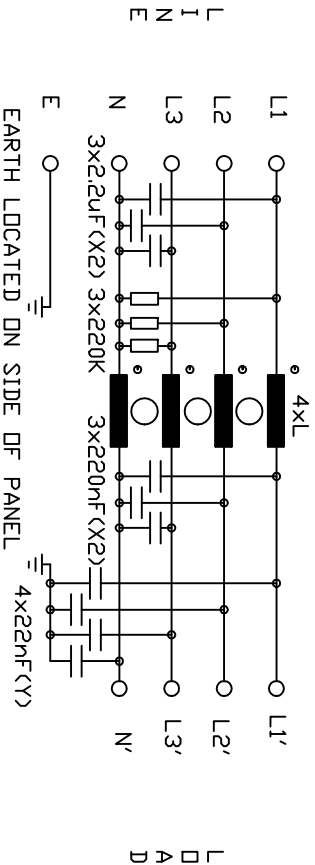


ALL DIMENSIONS MILLIMETRES

**ELECTRICAL SPECIFICATION**

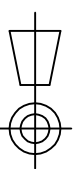
|                   |                    |
|-------------------|--------------------|
| RATED VOLTAGE     | 440/250V           |
| LINE FREQUENCY    | 50/60HZ            |
| TEMPERATURE RANGE | -25 to 85 DegC     |
| TEST VOLTAGE      | 2.0KV DC           |
| LEAKAGE CURRENT   | 2.2mA AT 250V 50HZ |
| WEIGHT            | 6.35kg             |

**ELECTRICAL SCHEMATIC**



| TYPE     | CURRENT (IRMS) @40°C | INDUCTANCE (L) | RESISTANCE PER WINDING (R) | MINIMUM INSERTION LOSS AT 150 KHZ |                   |
|----------|----------------------|----------------|----------------------------|-----------------------------------|-------------------|
|          |                      |                |                            | COMMON MODE                       | DIFFERENTIAL MODE |
| IHF 470  | 70A                  | 0.72mH         | 0.52mR                     | 35dB                              | 23dB              |
| IHF 4100 | 100A                 | 0.40mH         | 0.30mR                     | 30dB                              | 18dB              |

ALL DIMENSIONS IN MM / ANGLES IN DECIMAL DEGREES



DrgNo IHF4XX-M8-GS

TITLE 4W (M8) INDUSTRIAL HIGH PERFORMANCE FILTER

**ROXBURGH EMC**

GENERAL SPECIFICATION FOR IHF4XX-M8-GS

CUSTOMER FILTER REF

Sheet 1 of 1 | Aprvd Date 24/04/01 | Aprvd By SW | Drwn by SW | SCALE NTS | CNN--- | Location N: \DWG\GS\GS000238

©DELTRON EMCON LTD, ROXBURGH HOUSE, FOXHILLS INDUSTRIAL PARK, SCUNTHORPE, NORTH LINCOLNSHIRE, DN15 8QJ TEL +44 1724 281770 F +44 1724 270230