

TDA Series Ultra-miniature Surface Mount Half-pitch DIP Switches



H

DIP



NEW!

Features/Benefits

- Bifurcated contact for increased electrical reliability
- Process sealed for surface mount soldering and washable processing
- RoHS compliant

Typical Applications

- Hand-held electronic devices
- Portable computer and electronic devices
- Instrumentation and controls

Specifications

SWITCH FUNCTION: SPST – 1, 2, 4, 6, 8 & 10 positions.
 CONTACT RATING:
 24 V DC, 25 mA (switching).
 50 V DC, 100 mA (steady state).
 MECHANICAL AND ELECTRICAL LIFE: 1,000 cycles.
 CONTACT RESISTANCE: 100 mΩ max.
 INSULATION RESISTANCE: 100 MΩ @ 100 V DC min.
 DIELECTRIC STRENGTH: 300 V AC min.
 STORAGE TEMPERATURE: -40°C to 85°C.
 OPERATING TEMPERATURE: -40°C to 85°C.
 OPERATING FORCE: 4.9N max.
 SOLDERABILITY: Per MIL-STD-202F method 208D, or EIA RS-186E method 9 (1 hour steam aging).

PACKAGING: Switches supplied in rigid dispensing tubes in full tube quantities only, this may affect order quantity. Numbers of switches per tube varies with model. Tape and reel packaging quantity varies with model.

Materials

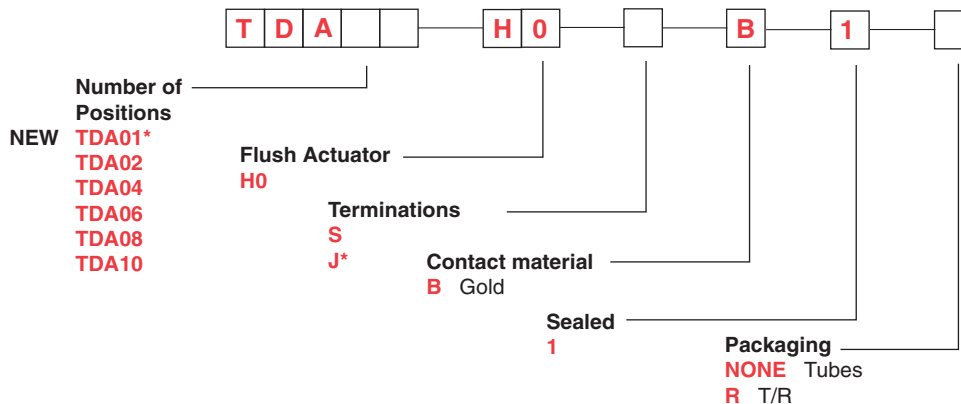
CASE & COVER: PPS (UL94V-0)
 ACTUATOR: LCP (UL94V-0).
 CONTACTS: Copper alloy, with gold plate over nickel plate.
 TERMINALS: Copper alloy, with gold flash over nickel plate.
 All terminals are insert molded.
 TAPE SEAL: Polyimide.

Note: Specifications and materials listed above are for switches with standard options. For information on specific and custom switches, consult Customer Service Center.

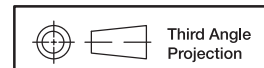
Note: All switches supplied in "OFF" position.

How To Order

Complete part numbers for TDA Series are shown below.



* TDA01H0JB1R is not available, TDA01 only offered in tape & reel

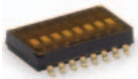


Third Angle
Projection

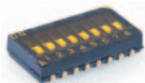
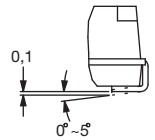
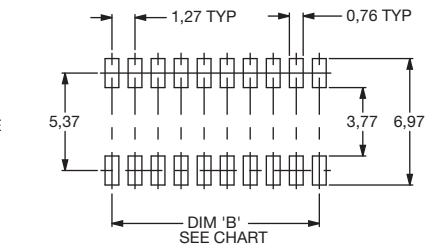
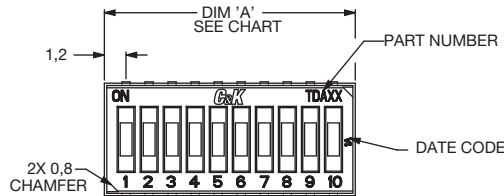
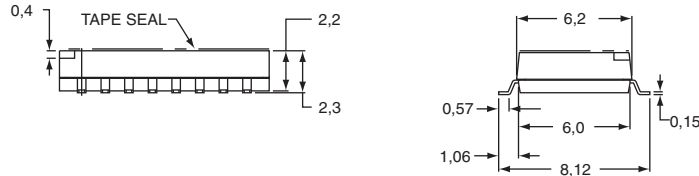
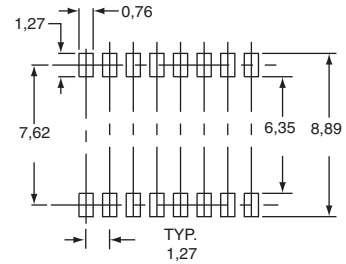
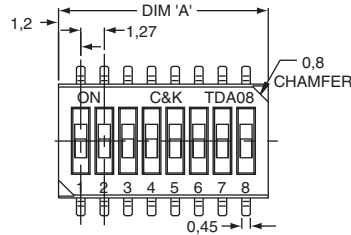
Dimensions are shown: mm
 Specifications and dimensions subject to change



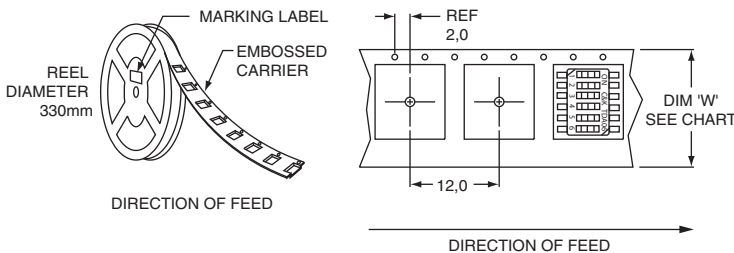
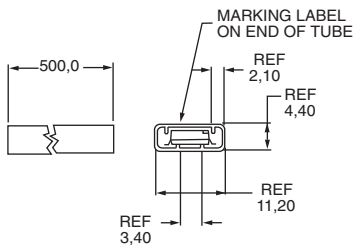
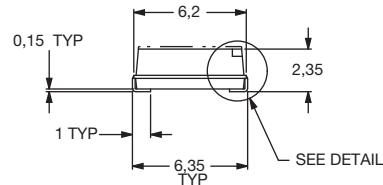
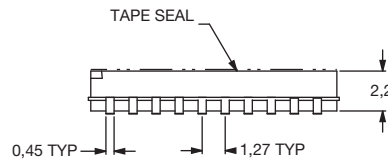
TDA Series Ultra-miniature Surface Mount Half-pitch DIP Switches



TDA08H0SB1



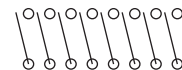
TDA10H0JB1



Tube Package

ROHS PART NUMBER	NO. POS.	DIM. 'A'	QUANTITY PER TUBE
TDA01H0SB1R*	1	2,4	N/A
TDA02H0_B1	2	3,67	125
TDA04H0_B1	4	6,21	70
TDA06H0_B1	6	8,75	50
TDA08H0_B1	8	11,29	40
TDA10H0_B1	10	13,83	30

Schematic



Tape & Reel Package

ROHS PART NUMBER	NO. POS.	DIM. 'W'	QUANTITY PER REEL
TDA01H0SB1R*	1	16,0	2500
TDA02H0_B1R	2	16,0	2000
TDA04H0_B1R	4	16,0	2000
TDA06H0_B1R	6	16,0	2000
TDA08H0_B1R	8	24,0	2000
TDA10H0_B1R	10	24,0	2000

* see next page for TDA01 drawing



Dimensions are shown: mm
Specifications and dimensions subject to change



TDA Series Ultra-miniature Surface Mount Half-pitch DIP Switches



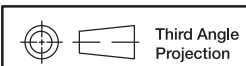
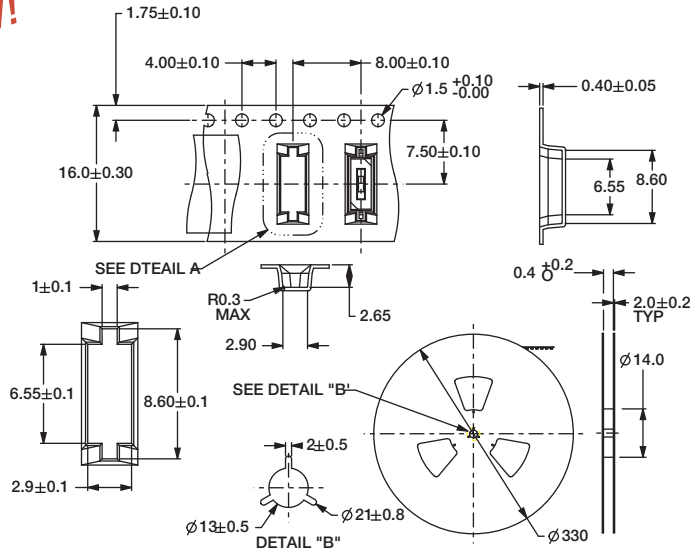
DIP

DIP



NEW!

TDA01H0SB1R



Dimensions are shown: Inch (mm)
Specifications and dimensions subject to change