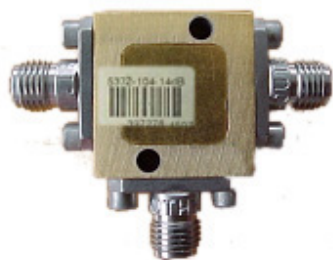
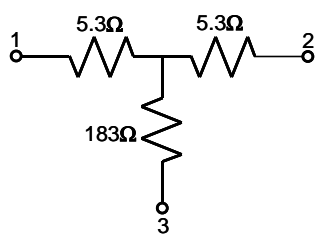


Z-Matched Pick-off Tee

PSPL5372 Datasheet



The PSPL5372 Z-Matched Pickoff Tee is an ultra-broadband resistive device that provides a scaled 5x (14dB) pickoff of the input signal. The PSPL5372 exhibits excellent through-line impedance match to 50 ohms for frequencies from DC to 26 GHz, unlike conventional 14dB pickoff tees that have DC resistance of 42 ohms at the input. The PSPL5372 features outstanding insertion loss and group delay flatness. Either Port 1 or Port 2 may be used as the input.



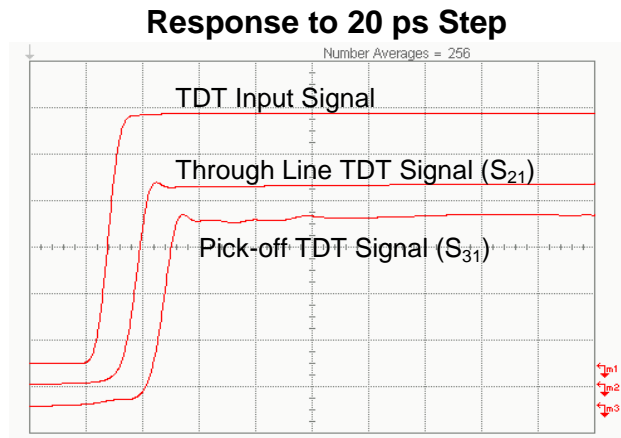
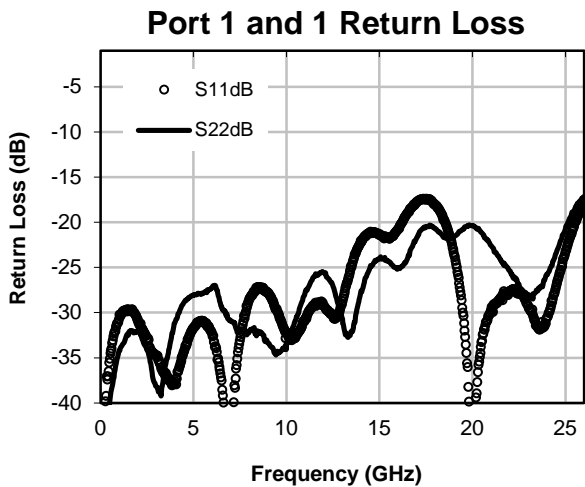
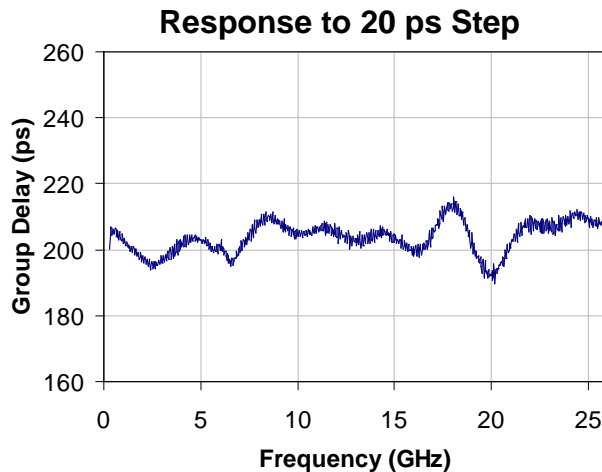
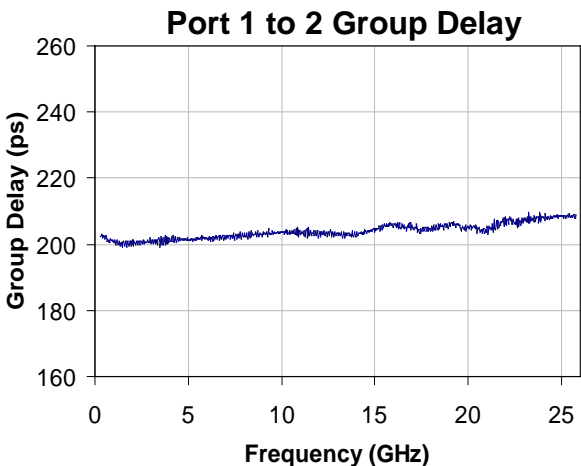
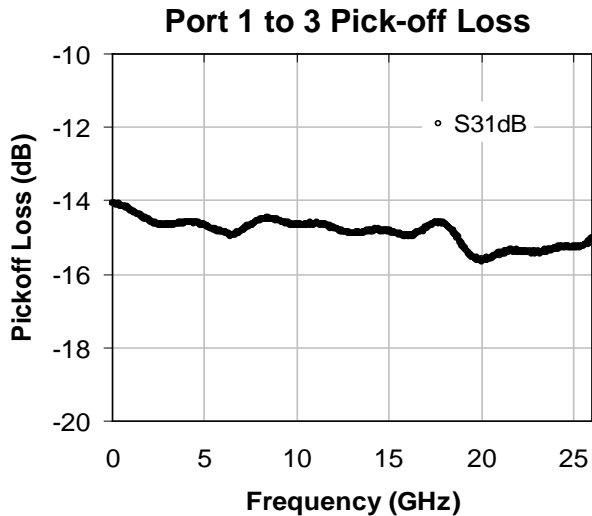
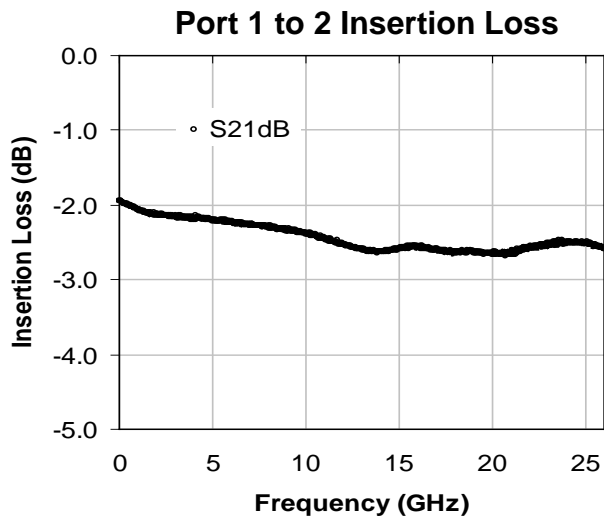
- Excellent Through-Line Impedance Match
- Minimizes Signal Reflections
- DC to 26 GHz
- 5x (14dB) Pickoff

Specifications

Parameter	Min.	Typ.	Max	
Pickoff Insertion Loss (S31)	-13.6dB	-14.7dB	-16.4dB	Specified from 40MHz – 20GHz
Through-line Insertion Loss (S21)	-1.7dB	-2.0dB	-3.1dB	Specified from 40MHz – 20GHz
Return Loss to 14GHz (S11/S22)		-25dB		Also see S11/S22 plot
Return Loss to 20GHz (S11/S22)	-15dB			Also see S11/S22 plot
Through-line risetime (10% - 90%)		12 ps		Port 1 to 2, see plot
Pickoff risetime (10% - 90%)		15 ps		Port 1 to 3, see plot
Through-line Group Delay Variation		±5 ps		Port 1 to 2, DC to 26GHz
Pickoff Group Delay Variation		±10 ps		Port 1 to 3, DC to 26GHz
Input/Output Impedance @ DC (port 1 or port 2)		50Ω		
Temperature Range				-55 to +90 °C Operating
Input Power, (Port 1 or 2, Avg)			2W	

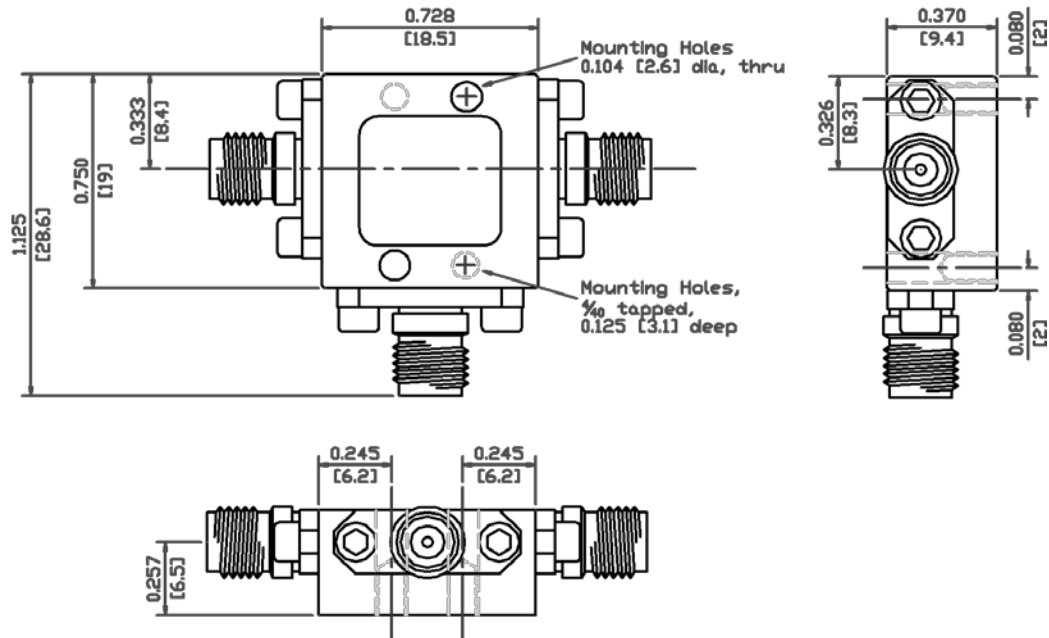
Notes: All parameters listed are typical unless max/min guaranteed limits are provided. The DC specs are valid only when used with 50Ω source and terminations.

Typical Performance



Amplitude scale: Input and S₂₁ = 35mV/div, S₃₁ = 9mV/div, Time scale = 50ps/div

PSPL5372 Mechanical dimensions



Ordering information

Model	Description
PSPL5372	Z-Matched Pick-Off Tee

PSPL5372 Z-Matched Pick-Off Tee

ASEAN / Australasia (65) 6356 3900

Belgium 00800 2255 4835*

Central East Europe and the Baltics +41 52 675 3777

Finland +41 52 675 3777

Hong Kong 400 820 5835

Japan 81 (3) 6714 3010

Middle East, Asia, and North Africa +41 52 675 3777

People's Republic of China 400 820 5835

Republic of Korea 001 800 8255 2835

Spain 00800 2255 4835*

Taiwan 886 (2) 2722 9622

* European toll-free number. If not accessible, call: +41 52 675 3777

Austria 00800 2255 4835*

Brazil +55 (11) 3759 7627

Central Europe & Greece +41 52 675 3777

France 00800 2255 4835*

India 000 800 650 1835

Luxembourg +41 52 675 3777

The Netherlands 00800 2255 4835*

Poland +41 52 675 3777

Russia & CIS +7 (495) 6647564

Sweden 00800 2255 4835*

United Kingdom & Ireland 00800 2255 4835*

Balkans, Israel, South Africa and other ISE Countries +41 52 675 3777

Canada 1 800 833 9200

Denmark +45 80 88 1401

Germany 00800 2255 4835*

Italy 00800 2255 4835*

Mexico, Central/South America & Caribbean 52 (55) 56 04 50 90

Norway 800 16098

Portugal 80 08 12370

South Africa +41 52 675 3777

Switzerland 00800 2255 4835*

USA 1 800 833 9200

Updated 10 April 2013

For Further Information. Tektronix maintains a comprehensive, constantly expanding collection of application notes, technical briefs and other resources to help engineers working on the cutting edge of technology.

Please visit www.tektronix.com.

Copyright © Tektronix, Inc. All rights reserved. Tektronix products are covered by U.S. and foreign patents, issued and pending. Information in this publication supersedes that in all previously published material. Specification and price change privileges reserved. TEKTRONIX and TEK are registered trademarks of Tektronix, Inc. All other trade names referenced are the service marks, trademarks, or registered trademarks of their respective companies.

29 May 2014



1PW-30594-0

www.tektronix.com

Tektronix[®]

