

PCB terminal block - SAMPLE PTSM 0,5/1-2,5-H SMD WH - 1833453

Please be informed that the data shown in this PDF Document is generated from our Online Catalog. Please find the complete data in the user's documentation. Our General Terms of Use for Downloads are valid (<http://phoenixcontact.com/download>)



PCB terminal block, Nominal current: 6 A, Nom. voltage: 160 V, Number of positions: 1, Connection method: Spring-cage connection, Mounting: SMD/THT/THR, Conductor/PCB connection direction: 0 °, Color: white



Key commercial data

Packing unit	5 pc
GTIN	4 046356 919982
Weight per Piece (excluding packing)	0.87 g
Custom tariff number	85369010
Country of origin	Germany

Technical data

Product type	Printed circuit board terminal
Rated voltage (IEC)	160
Rated current (IEC)	6
Mounting type	SMD/THT/THR
Number of positions	1
Levels	Single-level
Connection cross section	0.5
Connection method	Spring-cage connection

Classifications

eCl@ss

eCl@ss 5.1	27141190
eCl@ss 8.0	27440401

ETIM

ETIM 4.0	EC002643
ETIM 5.0	EC002643

PCB terminal block - SAMPLE PTSM 0,5/1-2,5-H SMD WH - 1833453

Accessories

Accessories

Screwdriver tools

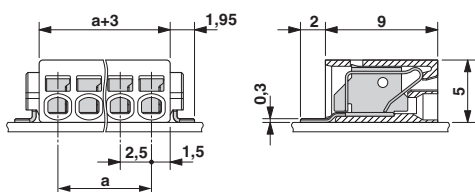
Screwdriver - SZS 0,4X2,0 - 1205202



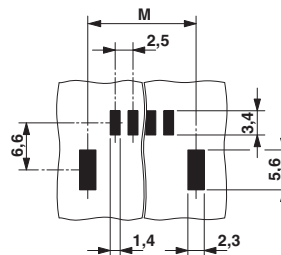
Micro screwdriver, bladed, size: 0.4 x 2.0 x 60 mm, 2-component grip, with non-slip grip and twist cap

Drawings

Dimensioned drawing



Drilling diagram



Diagram

