

HK17

Miniature Time Meter

Features

- Interchangeable with "Hobbs Minimeter"
- Low Cost
- 5 Hour Digits, .150" High, White on Black and Two Decimal Digits Red on Black
- Operation Indicator Wheel
- DC Accuracy = .05%
- Power Required = .2 Watt (DC), 2VA (AC)
- Temperature: -15°C to 50° C (5° F to 122° F)
- NEMA 4X/IP65 Sealed Front

Applications:

A high reliability instrument perfect for recording the operating time for maintenance, testing, leasing and warranty programs on all types of machinery.

Description:

Small in size and price, but rugged and durable, this AC or DC powered hour timer is driven by a synchronous motor. Many voltages are available. Four industry standard mounting styles are available. The unit is provided with easy connect, screw terminal connectors on .031" x .250" flat pins. This minimeter is especially designed for use on lighting systems, computers, business machines, control panels, generators, compressors and pumps. Useful also for service records on machinery such as industrial refrigerators, oxygen purifiers, printers or off-road vehicles.

Specifications:

Digit Size: 0.150" x .067" (3.8 x 1.7)

Display:

Hours: white digits on black

Decimals: red digits on black

Voltages:

24, 110, 220 VAC ± 10% 50 or 60 Hz

12 to 24, 36 to 80, 110 VDC ± 15%

Power Consumption:

Approx 2 VA at 230 VAC

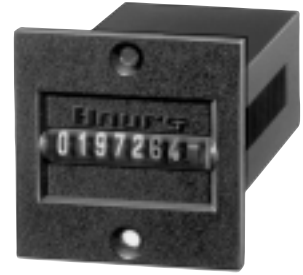
Approx. .2 Watts at 12 VDC

Termination: Flat tabs .031 x .250" with screw terminal.

Reset: None



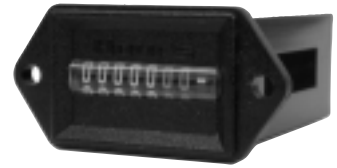
HK17.00



HK17.10



HK17.20



HK17.40

Drive:

Synchronous motor with AC

Stepping motor with DC

Operation Indicator:

AC: Fast rotating wheel with red stripes

DC: 1/100 h-display rotates every 36 sec. by one number.

Temperature: - 15°C to + 50°C (+5°F to + 122°F)

Housing: NEMA 4X(IP65) front panel (gasket not supplied, RTV type sealer recommended), plastic case

Weight: 1.4 ounces (40 g)

Approvals: CE Approved, UL Listed; File# E128604

How To Order

EXAMPLE: HK17 4 0 110V 60 1

Series

HK17

Case

- 0 = Rear mount
- 1 = Screw mount
- 2 = Spring clip
- 4 = Side flange
- 5 = Large spring clip
- 6 = Large side flange

Reset

- 0 = Non reset

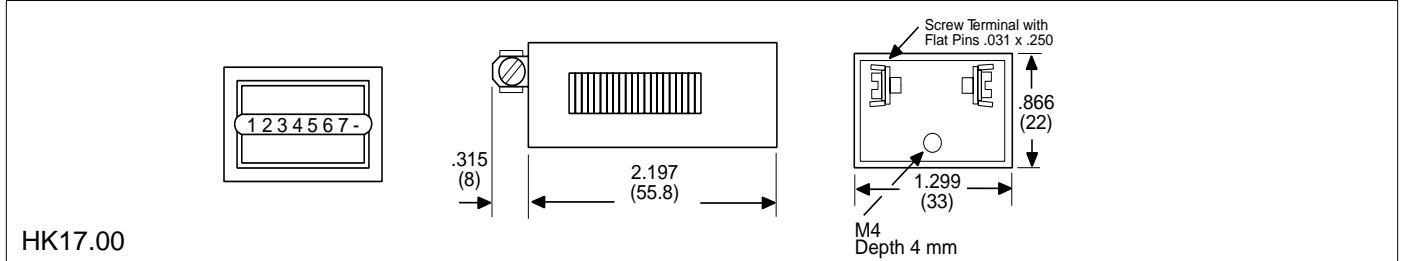
Operating Voltage

- 12VDC (12 to 24 VDC)
- 36VDC (36 to 80 VDC)
- 110VDC (110 VDC ± 15%)
- 24V 60 (50 for 50Hz) (AC Voltages ±10%)
- 110V 60 (50 for 50Hz) (AC Voltages ±10%)
- 220V 60 (50 for 50Hz) (AC Voltages ±10%)

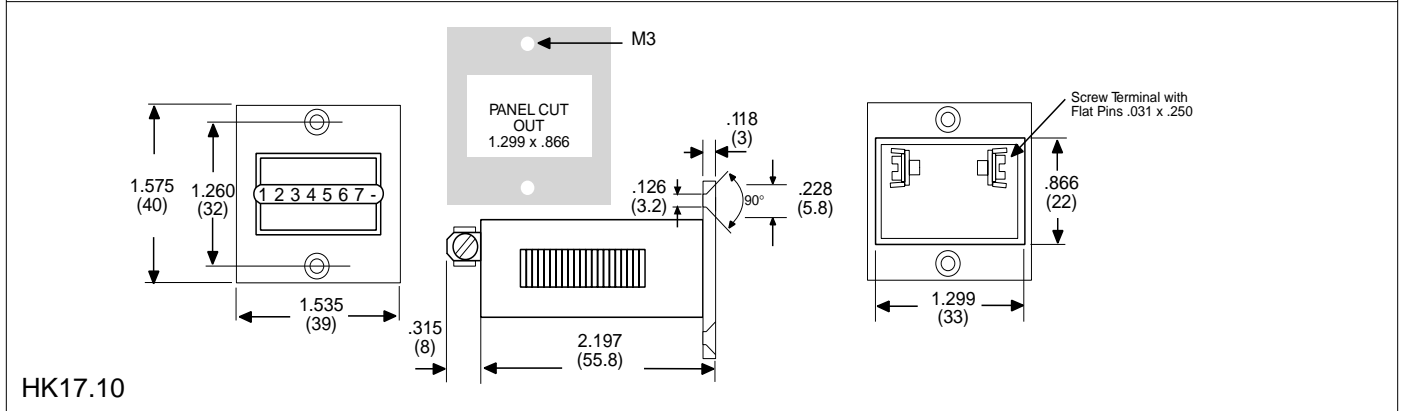
Options

- 1 = .031" x .250" tab without screw terminal
- 2 = Case sealed in back

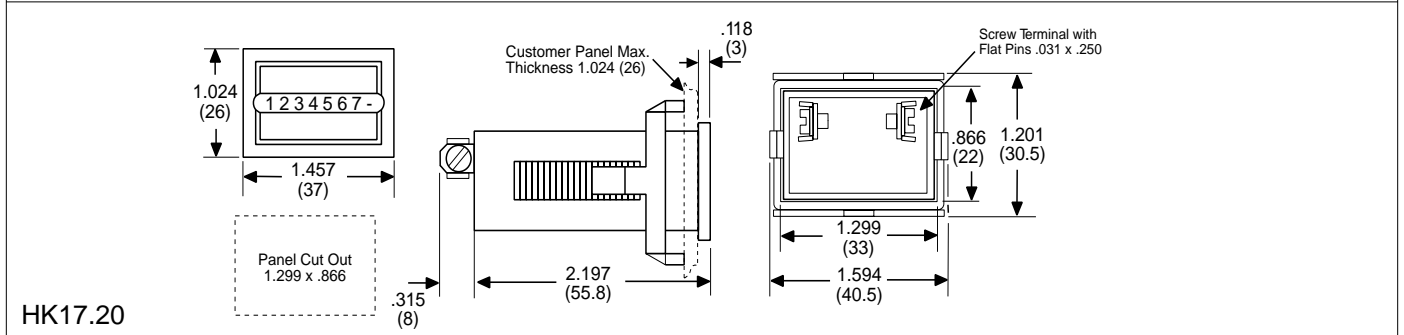
Mounting:



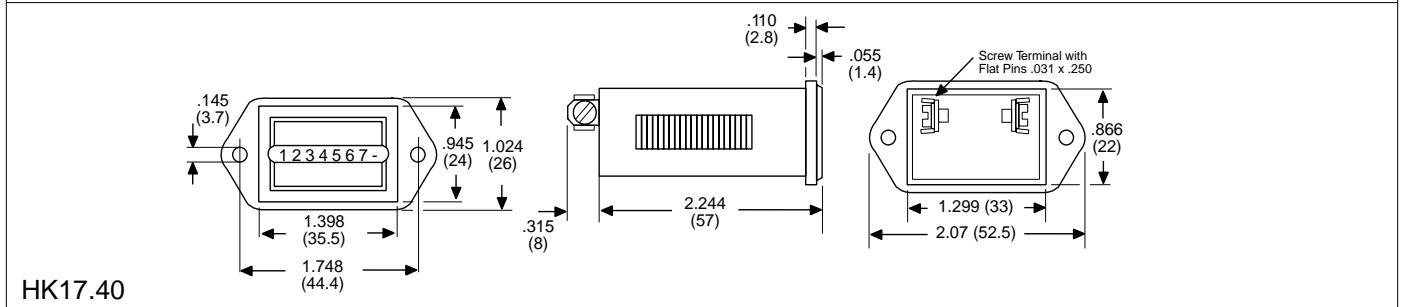
HK17.00



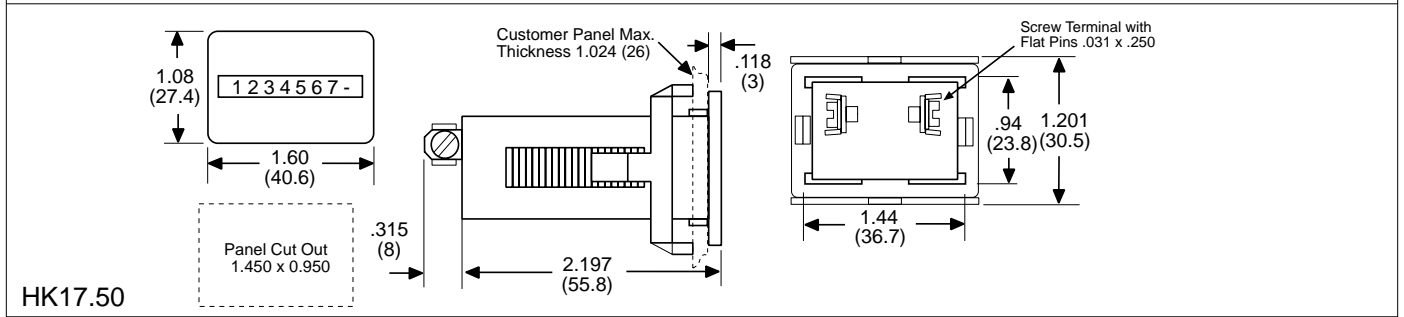
HK17.10



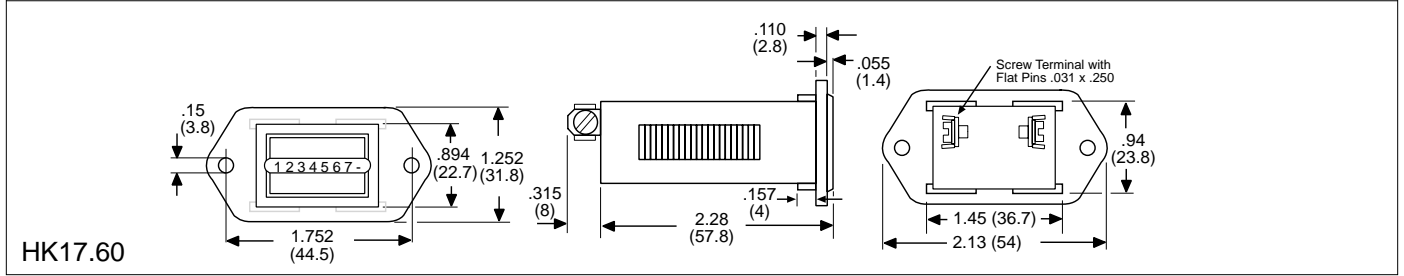
HK17.20



HK17.40



HK17.50



HK17.60

TIMERS