

This document is the property of Amphenol Corporation and is delivered on the express condition that it is not to be disclosed, reproduced or used, in whole or in part, for the manufacture or sale by anyone other than Amphenol Corporation without its prior consent, and that no right is granted to disclose or to use any information in this document.

FEMALE

Specifications :

Contact resistance : 30m max. at DC 100mA.

insulator resistance : 1000M min. at DC 500V.

Current rating : 5 AMP.

Dielectric withstanding voltage : AC 500V. for 1 minute

Operating temperature : -55 to +125 degrees Celsius

Contact : Brass , selective gold (see table below)

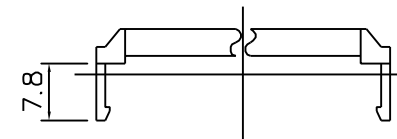
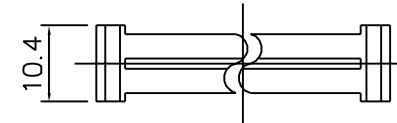
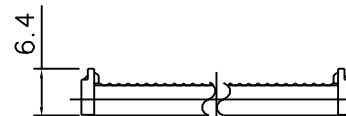
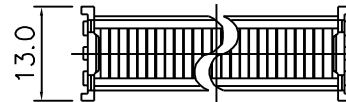
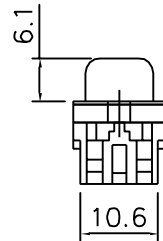
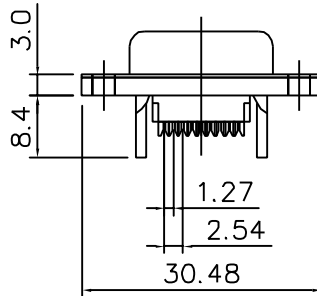
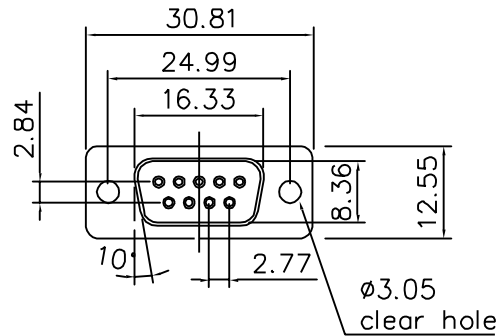
Housing : PBT & 30% glass fiber (UL 94V-0)

Single Contact insertion force : 500g max

Single contact withdrawal force : 30g min

ROHS COMPLIANT

MSL components : level 3



STRAIN RELIEF



Drawing number	Contact plating
L17DEFRA09S	Gold flash
L117DEFRA09S	15µ inches
L17DEFRA09SC309	30µ inches

TOLERANCE (mm)	APPROVALS	DATE	TITLE	AMPHENOL
X ±0.5	DRAWN GDU	28/04/06	17 SERIES FLAT RIBBON D-SUB SOCKET CONNECTORS	AMPHENOL SOCAPEX
X.X ±0.3	CHECKED JF.L	28/04/06		Dole Plant
X.XX ±0.2	APPROVED JF.L	28/04/06		Scale N.A. Sheet 1 of 1
UNLESS OTHERWISE SPECIFIED	UNIT:	MM	SIZE: DRAWING N° A4	REV. A

L-17DEFRA09S---