



100W to 600W Single Output General Purpose Power Supplies

Features	Benefits
• 10 Year e-cap Lifetime	• Better Field Reliability
• 5 Year Warranty	• Lower Cost of Ownership
• Global Safety Approvals	• Supports Worldwide Use
• Compact Size	• Easier System Integration



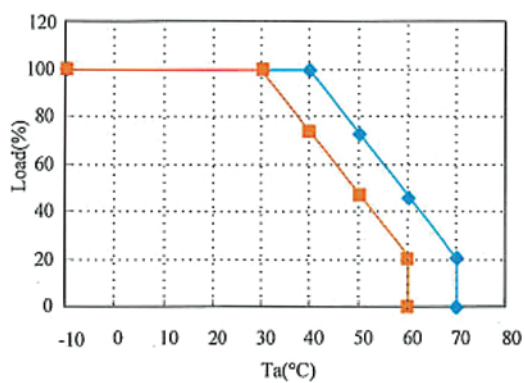
Specification		RWS100B	RWS150B	RWS300B	RWS600B
AC Input Voltage range	VAC	85 - 265VAC (47 - 63Hz), 300VAC for 5 seconds			
Inrush Current (100 / 200VAC)	A	15 / 30	16 / 32	17 / 34	20 / 40
Power Factor (100 / 200VAC)	-	Meets EN61000-3-2 (0.95 / 0.9)			
Input Current (100/200VAC) (typ)	A	1.3 / 0.7	1.9 / 1.0	3.8 / 2.1	7.2 / 4.0
Temperature Coefficient	-	<0.02%/°C			
Regulation	-	See table			
Overcurrent Protection	-	>105%, 5V & 12V constant current limit & hiccup autorecovery, 24V & 48V constant current limit with autorecovery			
Overvoltage Protection	V	115-140%, Cycle AC line to reset			
Hold Up Time (typ at full load)	ms	20ms			
Leakage Current (max)	uA	750uA maximum, typically 175uA at 115VAC, 63Hz			
Remote Sense	-	No			
Operating Temperature	-	-10° to +70°C, derate above 40°C for 100W and 150W, derate above 50°C for 300W & 600W (see graphs)			
Storage Temperature	-	-30° to +75°C			
Operating Humidity (non condensing)	%RH	30 - 90			
Storage Humidity (non condensing)	%RH	10 - 90			
Cooling	-	Convection		Internal Fan	
Withstand Voltage	-	Input to Ground 2kVAC, Input to Output 3kVAC, Output to Ground 500VAC for 1 min.			
Isolation Resistance	-	>100M at 25°C & 70%RH, Output to Ground 500VDC			
Vibration (non operating)	-	10 - 55Hz: 19.6m/s ² (sweep 1 min) X, Y, Z for 1 hour			
Shock	-	< 196.1 m/s ²			
Safety Agency Approvals (1)	-	UL60950-1, CSA60950, EN60950-1, UL:508, CSA C22.2 No.107.1-01, CE Mark			
Conducted & Radiated EMI	-	EN55011 / EN55022-B, FCC Class B, VCCI-B			
Immunity	-	IEC61000-4-2, -3, -4, -5, -6, -8, -11			
Weight (Typ)	g	400	480	900	1600
Size (WxHxD)	mm	94 x 39 x 108	94 x 41 x 128	102 x 41 x 170	120 x 61 x 190
Warranty	Yrs	5			

Notes: (1) UL508 & CSA C22.2 No.107.1-01 on RWS100B-5, -12, -24, RWS150B-5, -12, -24, RWS300B-24 only

Model Selector

Model	Voltage	Adjust Range (V)	Max Current (A)	Max Output Power	Load Reg. (mV)	Line Reg. (mV)	Ripple Noise (mV)	Efficiency (typ) % 100/200VAC
RWS100B-5	5V	4.5-5.75V	14	70	40	20	120	77 / 79
RWS150B-5	5V	4.5-5.75V	21	105	40	20	120	77 / 79
RWS300B-5	5V	4.5-5.75V	50	250	40	20	120	75 / 78
RWS600B-5	5V	4.5-5.75V	100	500	70	20	120	74 / 77
RWS100B-12	12V	10.8-13.8V	8.5	102	96	48	150	82 / 84
RWS150B-12	12V	10.8-13.8V	13	156	96	48	150	84 / 87
RWS300B-12	12V	10.8-13.8V	25	300	96	48	150	79 / 82
RWS600B-12	12V	10.8-13.8V	50	600	96	48	150	81 / 84
RWS300B-15	15V	13.5-17.3V	20	300	120	60	150	81 / 84
RWS600B-15	15V	13.5-17.3V	40	600	120	60	150	81 / 84
RWS100B-24	24V	21.6-27.6V	4.5	108	192	96	150	85 / 87
RWS150B-24	24V	21.6-27.6V	6.5	156	192	96	150	86 / 89
RWS300B-24	24V	21.6-27.6V	12.5	300	192	96	150	85 / 88
RWS600B-24	24V	21.6-27.6V	25	600	192	96	150	84 / 88
RWS300B-36	36V	32.4-41.4V	8.4	302.4	288	144	200	85 / 88
RWS600B-36	36V	32.4-41.4V	16.7	601.2	288	144	200	85 / 88
RWS100B-48	48V	43.2-52.8	2.1	100.8	384	192	200	85 / 87
RWS150B-48	48V	43.2-52.8	3.3	158.4	384	192	200	86 / 89
RWS300B-48	48V	43.2-52.8	6.3	302.4	384	192	200	85 / 88
RWS600B-48	48V	43.2-52.8	12.5	600	384	192	200	85 / 88

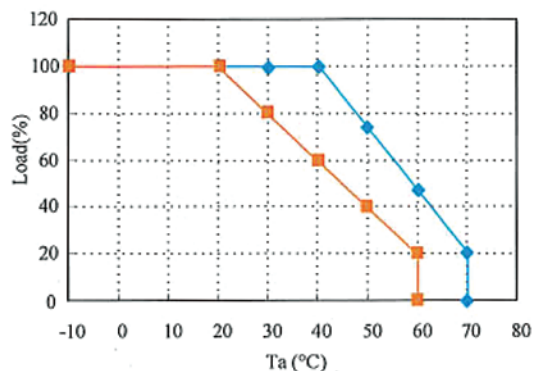
Output Derating RWS100B Series



◆ Mounting (A)
 ■ Mounting (B),(C),(D)

Ta(°C)	Load (%)	
	Mounting(A)	Mounting(B),(C),(D)
-10 - +30	100	100
+40	100	73
+50	73	47
+60	46	20
+70	20	0

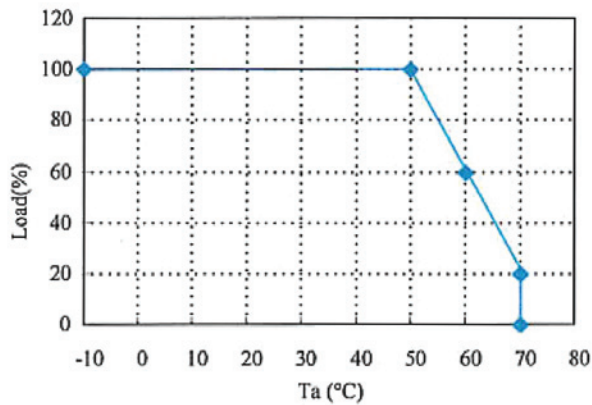
Output Derating RWS150B Series



◆ Mounting (A)
 ■ Mounting (B),(C),(D)

Ta(°C)	Load (%)	
	Mounting(A)	Mounting(B),(C),(D)
-10 - +20	100	100
+30	100	80
+40	100	60
+50	73	40
+60	46	20
+70	20	0

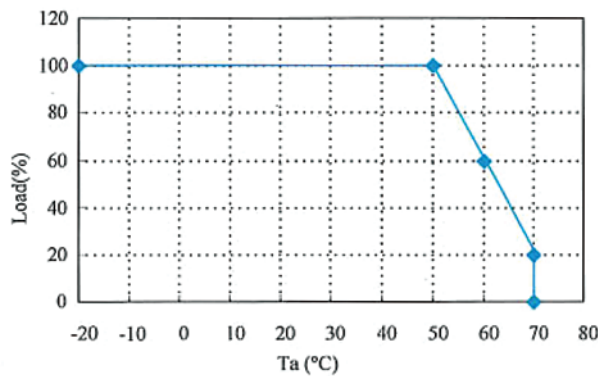
Output Derating RWS300B Series



◆ Mounting (A)-(D)

Ta(°C)	Load (%)
	Mounting(A)-(D)
-10 - +50	100
+60	60
+70	20

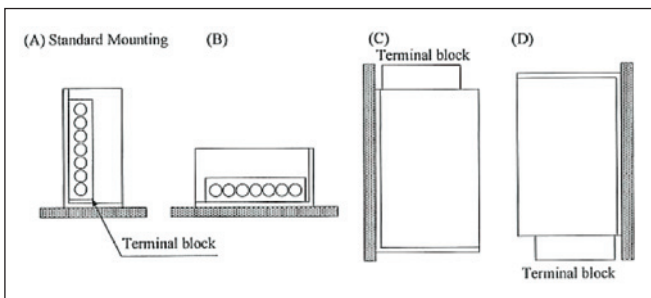
Output Derating RWS600B Series



◆ Mounting (A)-(D)

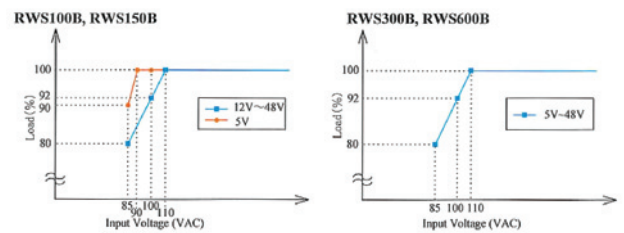
Ta(°C)	Load (%)
	Mounting(A)-(D)
-20 - +50	100
+60	60
+70	20

Mounting Direction RWS-B Series



Output Derating according to Input Voltage

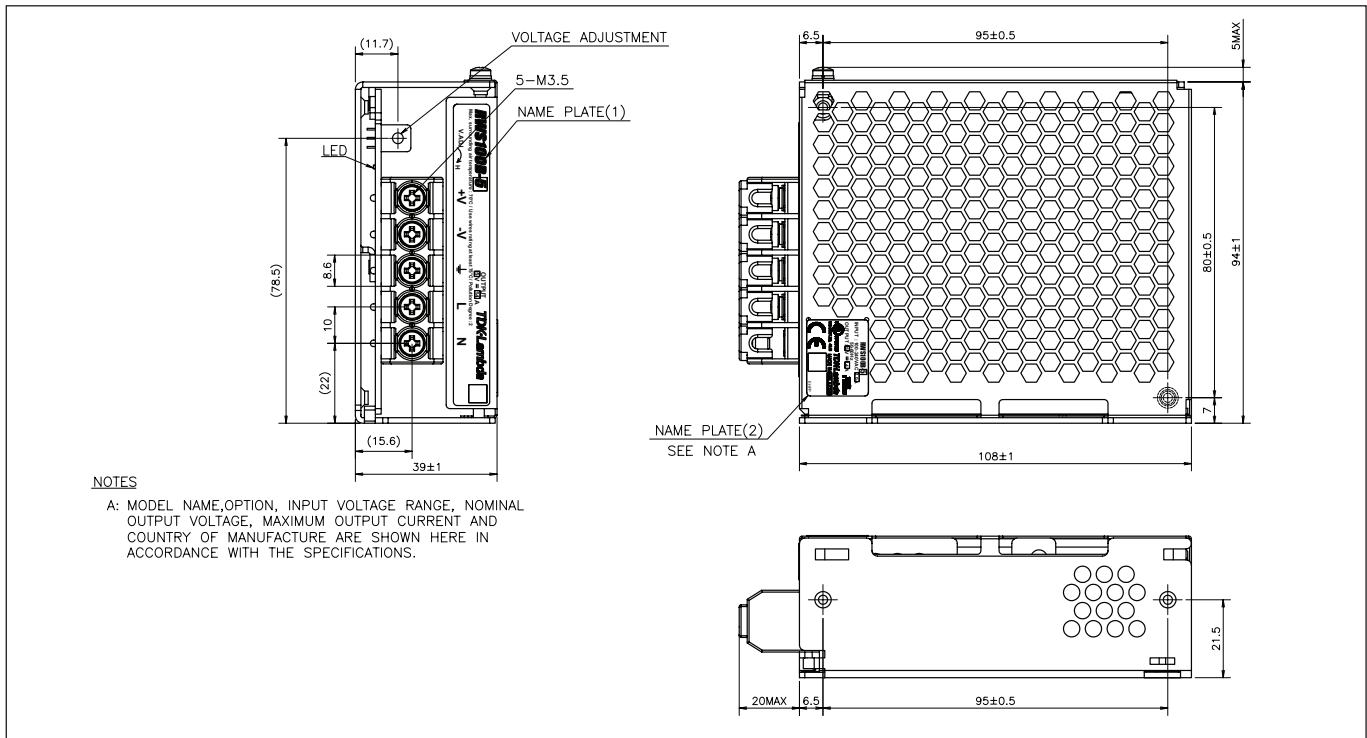
Note: Load (%) is percent of maximum current value in a rated output voltage



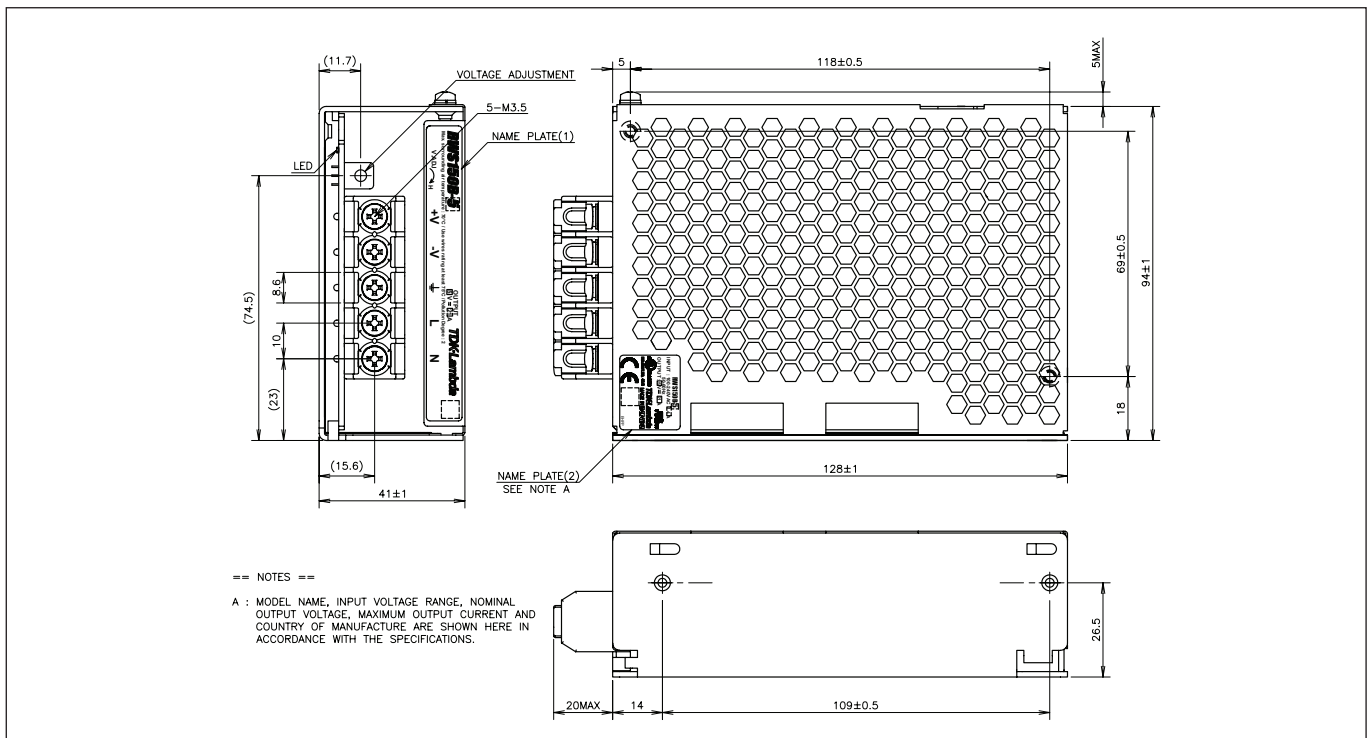
Options

Suffix	Description
/CO2	Double Sided Board Coating
/R	Remote On/Off (RWS300B and RWS600B)
/RFO	Remote On/Off, Remote Sense, Parallel Operation, DC Good Signal (RWS600B only)

Outline Drawing RWS100B Series



Outline Drawing RWS150B Series





TDK-Lambda France SAS

ZAC des Delaches
CS 41077
9 rue Thuillere
91978 Villebon Courtaboeuf
France
Tel: +33 1 60 12 71 65
Fax: +33 1 60 12 71 66
france@fr.tdk-lambda.com
www.fr.tdk-lambda.com



Italy Sales Office

Via dei Lavoratori 128/130
20092 Cinisello Balsamo (MI)
Italy
Tel: +39 02 61 29 38 63
Fax: +39 02 61 29 09 00
info.italia@it.tdk-lambda.com
www.it.tdk-lambda.com



Netherlands

info@tdk-lambda.nl
www.tdk-lambda.nl



TDK-Lambda Germany GmbH

Karl-Bold-Strasse 40
77855 Achern
Germany
Tel: +49 7841 666 0
Fax: +49 7841 5000
info.germany@de.tdk-lambda.com
www.de.tdk-lambda.com



Austria Sales Office

Aredstrasse 22
2544 Leobersdorf
Austria
Tel: +43 2256 655 84
Fax: +43 2256 645 12
info.germany@de.tdk-lambda.com
www.de.tdk-lambda.com



Scandinavia Sales Office

Valdemarsgade 7
4100 Ringsted
Denmark
Tel: +45 24 63 95 65
Fax: +45 69 80 44 99
info@de.tdk-lambda.com
www.emea.tdk-lambda.com



Switzerland Sales Office

Bahnhofstrasse 50
8305 Dietlikon
Switzerland
Tel: +41 44 850 53 53
Fax: +41 44 850 53 50
info@de.tdk-lambda.com
www.de.tdk-lambda.com



TDK-Lambda UK Ltd.

Kingsley Avenue
Ilfracombe
Devon EX34 8ES
United Kingdom
Tel: +44 (0) 12 71 85 66 66
Fax: +44 (0) 12 71 86 48 94
powersolutions@uk.tdk-lambda.com
www.uk.tdk-lambda.com



TDK-Lambda Ltd.

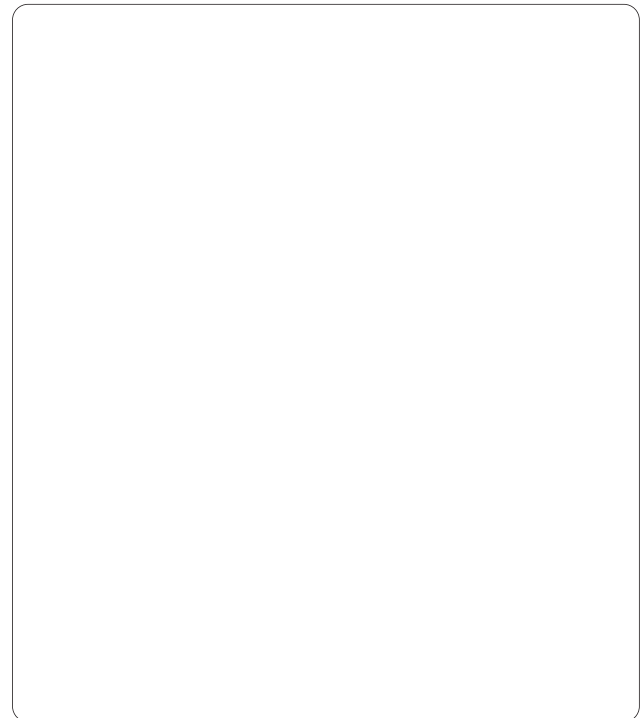
Kibbutz
Givat Hashlosha 48800
Israel
Tel: +9 723 902 4333
Fax: +9 723 902 4777
info@tdk-lambda.co.il
www.tdk-lambda.co.il



Russia

Technical Support:
St Petersburg
Tel: +7 (812) 6580463
Sales:
Moscow
info@tdk-lambda.ru
www.tdk-lambda.ru

Local Distribution



www.emea.tdk-lambda.com