

Light Pipe

Part No. 7511A20

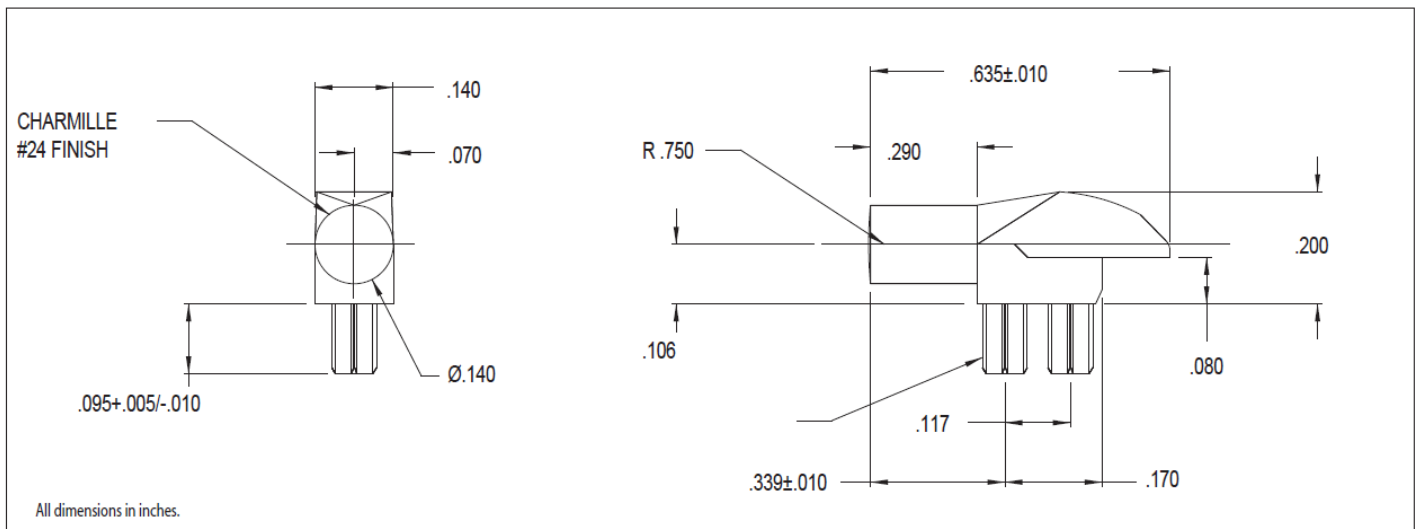


Overview

- Precision engineered with **ray tracing** for bright, optically precise even indication and attractive appearance.
- Right angle, single position
- ESD protection from circuitry for exceptional reliability.
- Optimized for use with Bright ★ Chips™ SMT LEDs.
- High contrast and wide viewing angle for greater visibility.
- Parts inserted after reflow to permit LED pad inspection before assembly.
- Compliance to UL94V-0
- Low profile for height constrained applications.
- Large lens provides high visibility.
- 7511A20 is designed for use with 67-21 and 67-22 Series Bright Chip LEDs.

Refer to "Mounting Hole Pattern 3.pdf"

Dimensions



Visual Communications Company, LCC

12780 Danielson Court
 Poway, CA 92064 USA
 858.386.5666
 800.522.5546

<http://vcclite.com/>