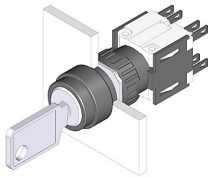


EAO – Your Expert Partner for Human Machine Interfaces

51-372.022D - Keylock switch 3 positions

51-372.022D - Keylock switch 3 positions



Attention: The preview is based on a sample product. This can differ from your current configuration.

Mounting

Mounting cut-out Design \varnothing 16 mm raised

Front

Front dimension \varnothing 18 mm
Front shape round
Front material Plastic
Front colour black

Other Attributes

Weight 0.025 kg

Operating-/Indication part

Switching angle $C = 90^\circ / 90^\circ$

IP-Rating

Front protection IP 65

Connection Method

Terminal Solder 2.8 x 0.5 mm

Actuator

Key remove $C + A + C$
Switching action Maintained - Rest - Maintained

Switching element

Rotary positions 3
Switching system Snap-action switching element
Switching current 5 A
Contacts 2 NC + 2 NO
Contact material Gold
Switching voltage 250 V AC

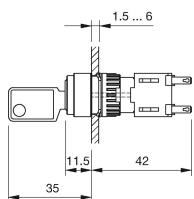
Function

Keylock switch

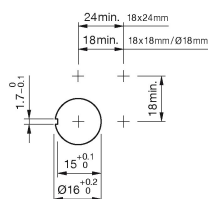
EAO – Your Expert Partner for Human Machine Interfaces

51-372.022D - Keylock switch 3 positions

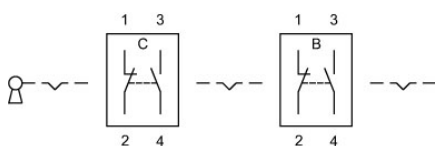
Dimensions



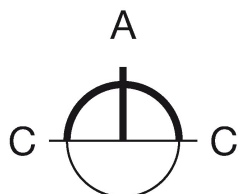
Mounting cut-outs



Wiring diagram



Switching positions



Additional information

Standard lock: DOM 311

Two keys are supplied with each key lock switch

Optional lock numbers on request

Legend

Contacts: NC = Normally closed, NO = Normally open

Switching action: A = Rest, C = Maintained