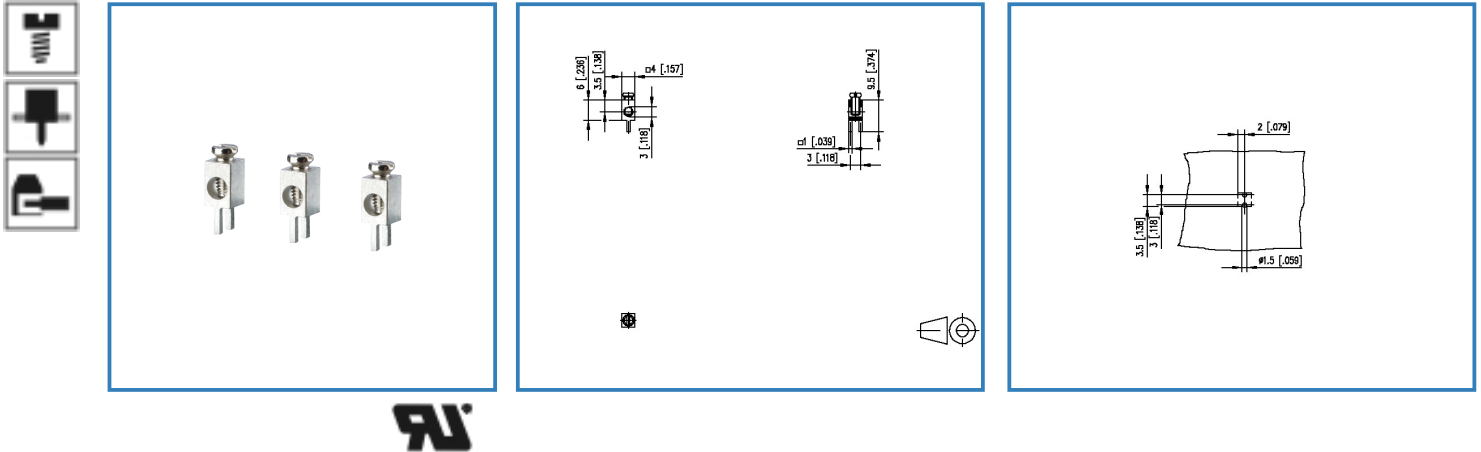


Data Sheet

Type 360272

Illustration



see enlarged drawing at the end of the document

Product specification

- screw type terminal block, solderable, double solder pins
- direction of connection 90°
- color metal
- open construction, screw brought down by hand (transport safety)
- Connection data

RI A / AWG 15 / 26 - 14

Data Sheet

Type 360272

Technical Data

General Data

Tightening torque SEV	0.5 Nm		
Tightening torque UL	3.5 lb-in		
Solder pin length	3.5 mm		
min. number of poles	1		
max. number of poles	1		
protection category	IP 00		
Overvoltage category	III	III	II
Pollution degree	3	2	2
Rated test voltage	0.8 kV	4 kV	2.5 kV

Connection data

 A / AWG	15 / 26 - 14
--	--------------

Material

terminal body material	CuZn
terminal body surface	Ni + Sn
screw surface	Zn Cr(VI)-frei/free
screw thread	M2.6

General

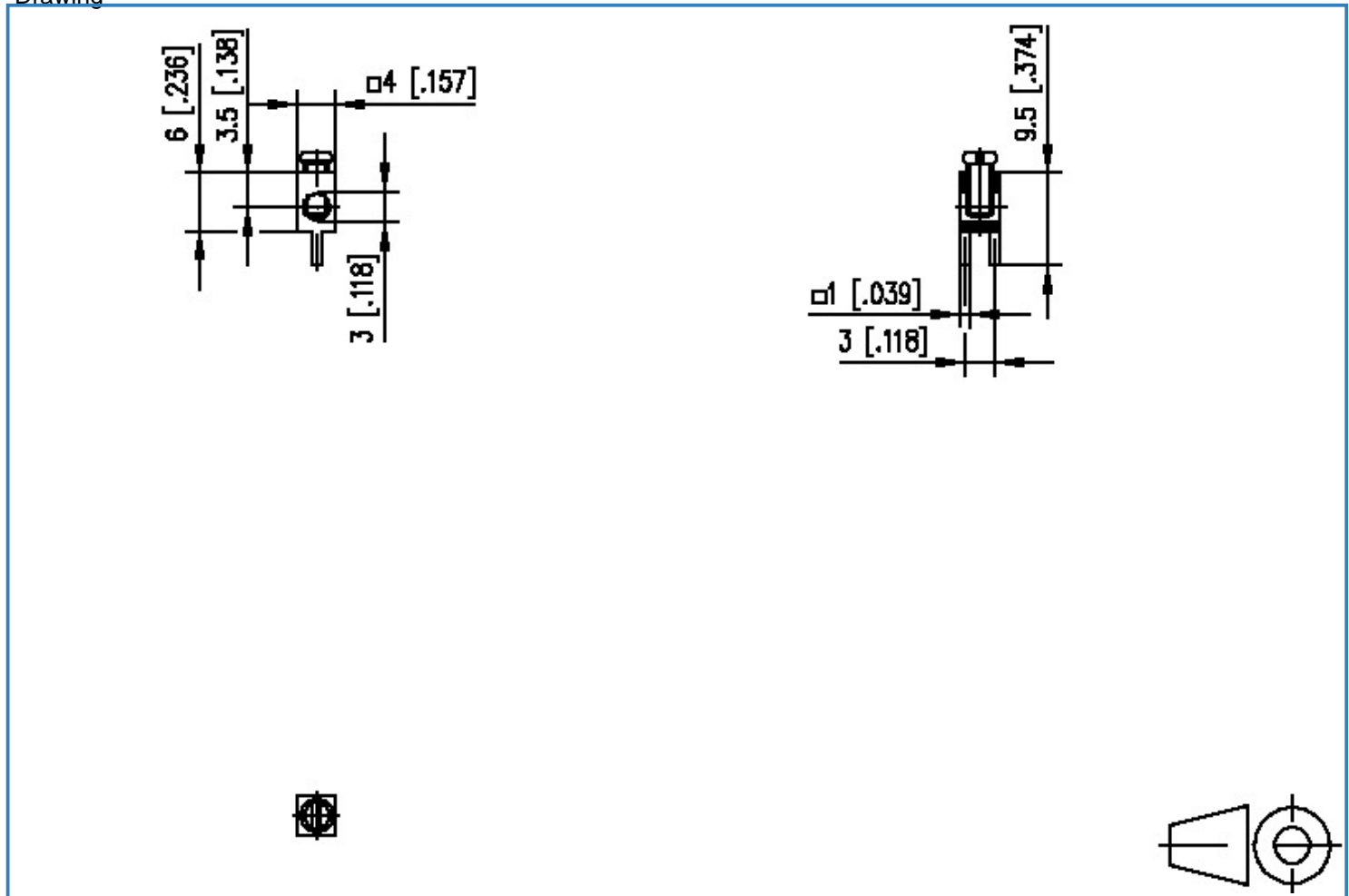
solderability	For THR products acc. to IPC/JEDEC J-STD-020D-MSL 1 For THT products max. 260 °C / 10 s
Tolerance	ISO 2768 -mH

Data Sheet

Type 360272

Illustration

Drawing



Data Sheet

Type 360272

PCB Layout

