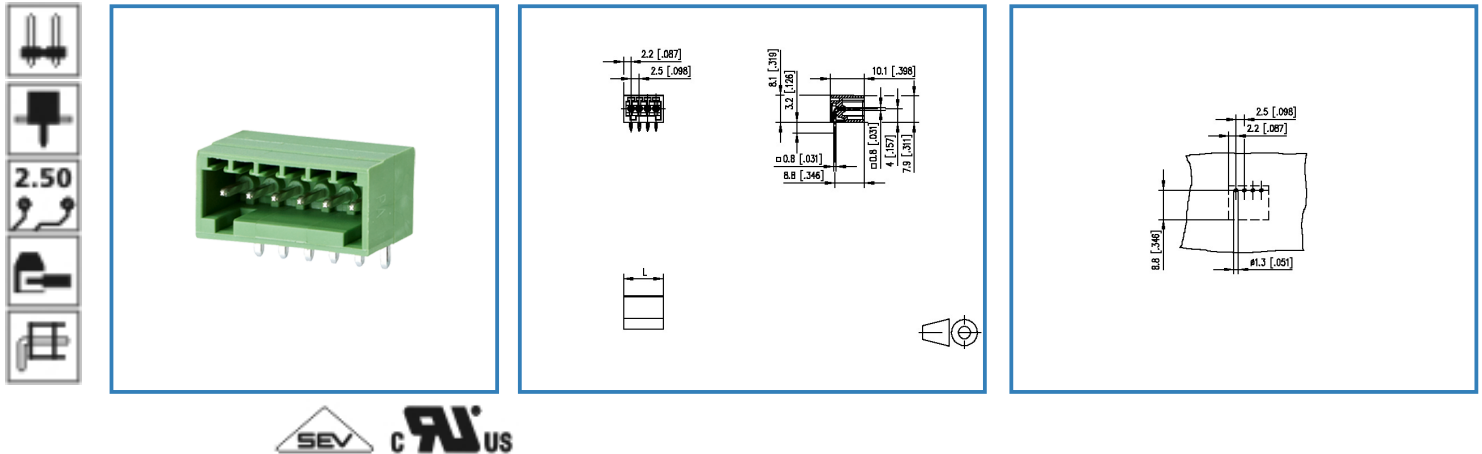


Data Sheet

PT091xxHGBN

Illustration



see enlarged drawing at the end of the document

Product specification

- pin header, solderable
- centerline 2.50 mm, direction of connection 90°
- closed ends
- color green
- Connection data

cRUUS V / A 150 / 5

SEV 6 A / 80 V / 2.5 kV / 3 / IEC 61984

Data Sheet

PT091xxHGBN

Page 2/5

P/N

313741xx

xx=number of poles



2013/12/05

Technical Data

General Data

| | | | |
|---------------------------|---------|--------|--------|
| Solder pin length | 3.2 mm | | |
| min. number of poles | 2 | | |
| max. number of poles | 12 | | |
| Insulating material class | CTI 600 | | |
| clearance/creepage dist. | 1.7 mm | | |
| protection category | IP 00 | | |
| Overvoltage category | III | III | II |
| Pollution degree | 3 | 2 | 2 |
| Rated voltage | 80 V | 320 V | 320 V |
| Rated test voltage | 2.5 kV | 2.5 kV | 2.5 kV |

Connection data

| | |
|---|-------------------------------------|
|  V / A | 150 / 5 |
|  | 6 A / 80 V / 2.5 kV / 3 / IEC 61984 |

Material

| | |
|----------------------|---------|
| insulating material | PA66 |
| flammability class | V0 |
| contact pin material | CuFe |
| contact pin surface | Ni + Sn |

Climatic properties

| | |
|-------------------------|--------|
| upper limit temperature | 105 °C |
| lower limit temperature | -40 °C |

General

| | |
|---------------|---|
| solderability | For THR products acc. to IPC/JEDEC J-STD-020D-MSL 1 For THT products max. 260 °C / 10 s |
| Tolerance | ISO 2768 -mH |

Data Sheet

PT091xxHGBN

Page 3/5

P/N

313741xx

xx=number of poles

2013/12/05

Matching Part to

P/N

Product name

ASP051

SP051xxVGNN ASP051



METZ CONNECT GmbH

Im Tal 2 | 78176 Blumberg | Germany | www.metz-connect.com

Phone +49 7702 533-0 | Fax +49 7702 533-433

Montageanleitung / Mounting instruction siehe / see www.metz-connect.com

Members of METZ CONNECT



Data Sheet

PT091xxHGBN

Page 4/5

P/N

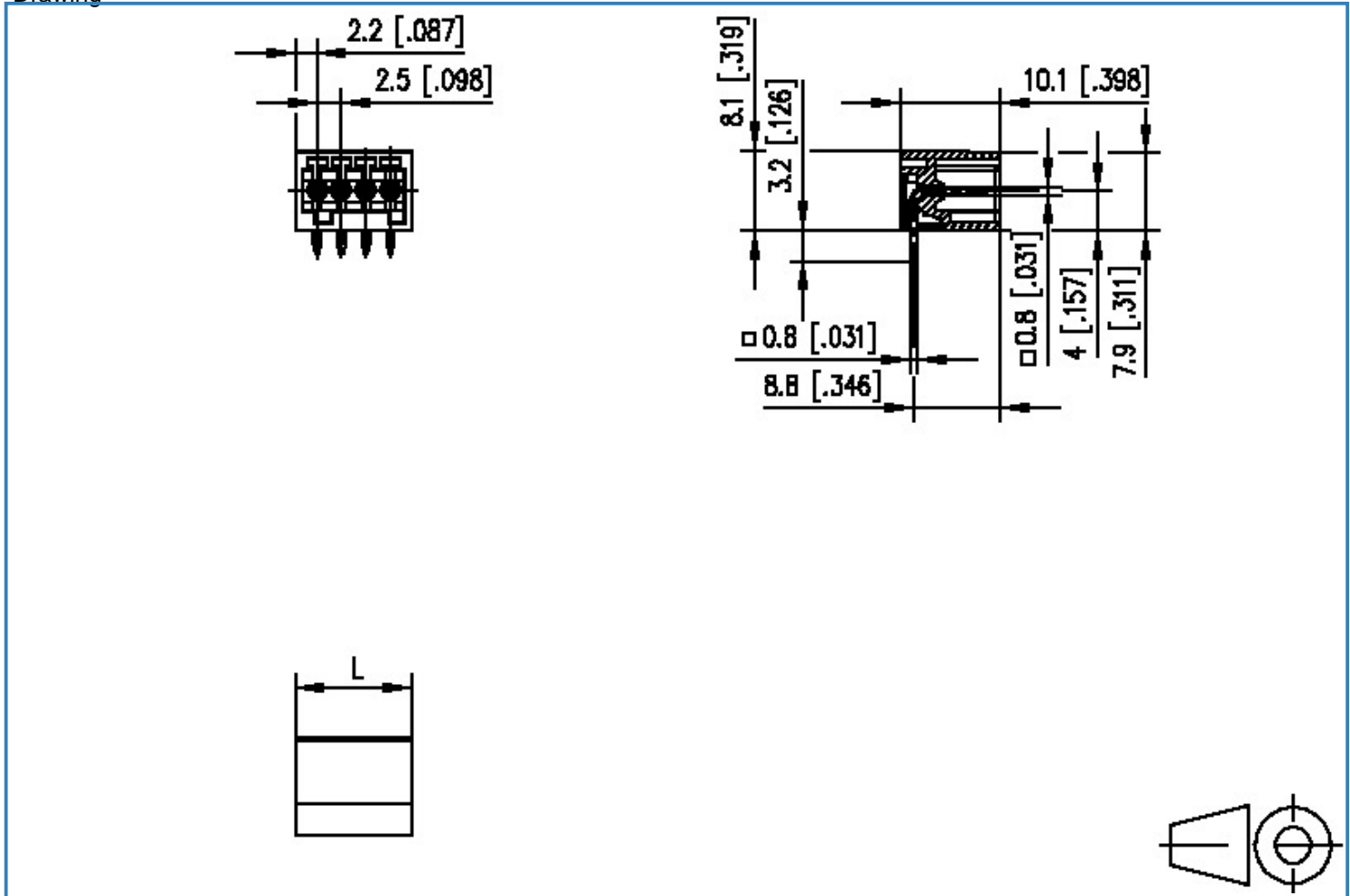
313741xx

xx=number of poles

2013/12/05

Illustration

Drawing



$L = (\text{pole size} - 1) \times \text{centerline} + 4.4 [0.173]$



Data Sheet

PT091xxHGBN

Page 5/5

P/N

313741xx

xx=number of poles

2013/12/05

PCB Layout

