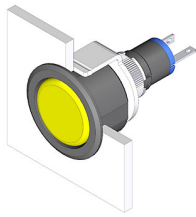


EAO – Your Expert Partner for Human Machine Interfaces

18-062.0055L - Indicator actuator

18-062.0055L - Indicator actuator



Attention: The preview is based on a sample product. This can differ from your current configuration.

Mounting

Design flush

Other Attributes

Weight 0.003 kg
Operation current 2 mA
Operating voltage 24 V DC $\pm 10\%$

Operating-/Indication part

Lens material Plastic
Lens colour green
Lens profile flat
Lens optics translucent
Lens illumination illuminative

IP-Rating

Front protection IP 40

Connection Method

Terminal Solder

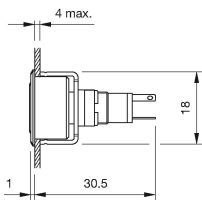
Function

Indicator

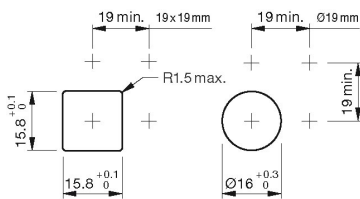
EAO – Your Expert Partner for Human Machine Interfaces

18-062.0055L - Indicator actuator

Dimensions



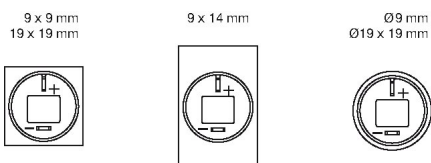
Mounting cut-outs



Wiring diagram



Component layout



Additional information

Luminosity and wave length variations caused by LED manufacturing processes may cause slight differences regarding the illumination