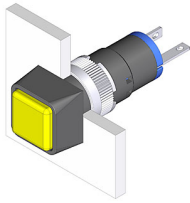


EAO – Your Expert Partner for Human Machine Interfaces

18-050.0054L - Indicator actuator

18-050.0054L - Indicator actuator



Attention: The preview is based on a sample product. This can differ from your current configuration.

Mounting

Mounting cut-out Ø 8 mm
Design raised

Front

Front dimension 9 x 9 mm
Front shape square

Other Attributes

Weight 0.002 kg
Operation current 10 mA
Operating voltage kundenspezifisch V

Operating-/Indication part

Lens material Plastic
Lens colour yellow
Lens profile flat
Lens optics translucent
Lens illumination illuminative

IP-Rating

Front protection IP 40

Connection Method

Terminal Solder

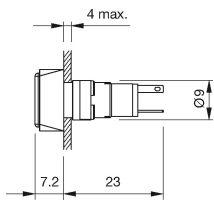
Illumination

Forward voltage typ. 3.0 V DC @ 20 mA
LED colour white

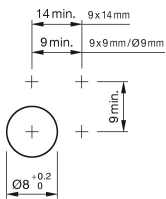
Function

Indicator

Dimensions



Mounting cut-outs



Wiring diagram



Component layout



Additional information

Luminosity and wave length variations caused by LED manufacturing processes may cause slight differences regarding the illumination

The series resistance for LEDs need to be determined and integrated by customers.