

RES30F10

Rev. 0

CHARACTERISTICS:

Rated Voltage:	250VAC max
Rated Current at Ambient:	10A @ 40°C
Operating Frequency:	DC-60HZ
Climatic Class (IEC60068-1):	25/100/21
Temperature Range:	-25°C to +100°C
Over load Current:	1.5 x Rated Ct. for 1 Min
Operational Leakage current : (at 230VAC and Total C +/-20%)	0.73 mA max
Worst case Leakage current : (N interrupted and Total C +/-20%)	<1.11 mA max
DCR @ 25°C (+/-25%) :	150 mΩ
Test Voltage (100%) for 2 sec:-	P-P: 1100VDC P-GND: 3000VDC
Ingress Protection:	IP 20
Weight (Approximate):	190 gr

FILTER PARAMETERS:

Total Inductance (P-P'+N-N') @10KHz:	8mH +50%,-30%
Total Capacitance (P-P/P-N) @1KHz:	0.94μF +/- -20%
Total Capacitance (P/N-GND) @1KHz:	9.4nF +/- -20%
Total Resistance (P-P/P-N):	0.68M Ω +/- -10%
Total Resistance (P/N-GND):	

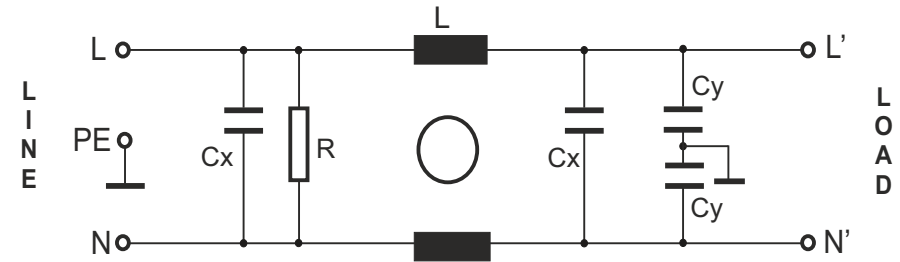
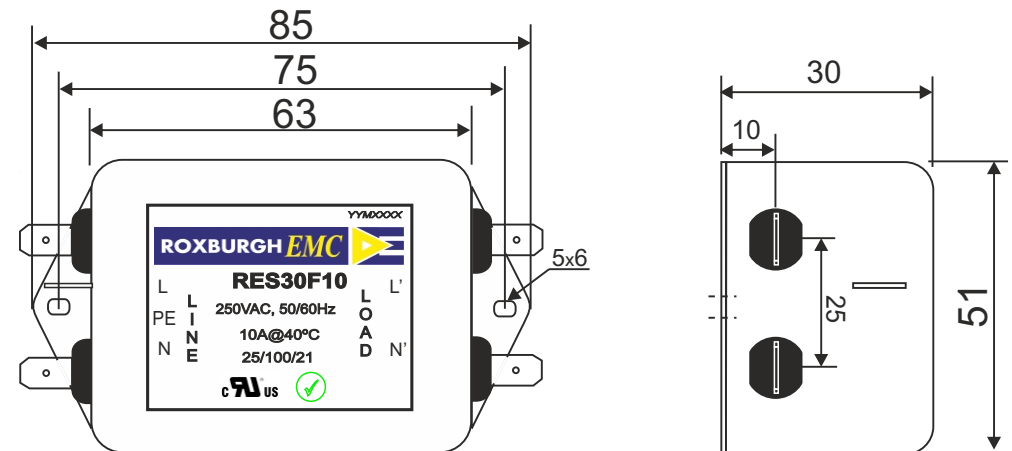
APPROVALS: REACH
RoHS
UL



APPROVED
BY
AJAY
Date: 15-03-2014

ROXBURGH EMC

TEL: +44(0) 1724 273200
email: sales@dem-uk.com
web: www.dem-uk.com/roxburgh

CIRCUIT DIAGRAM:**MECHANICAL DIMENSION (mm):****Note:**

Housing matl. Fe with Ni Plated
Fast-On Terminal (6.38 x 0.8mm)
Connections

TOLERANCE: +/-1.0 mm



ROXBURGH ELECTRONICS LTD
FILTER INSERTION LOSS CHARACTERISTICS
CISPR 17 - 50 OHM METHOD

RES30F10

