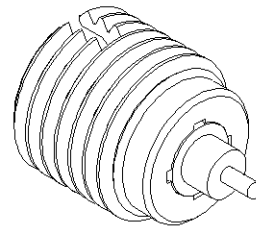
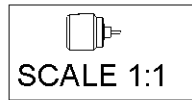
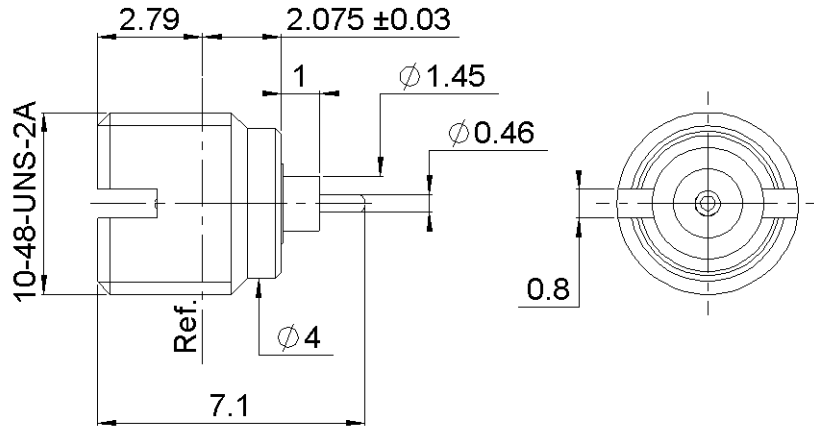
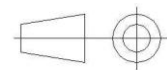


PAGE 1/3	ISSUE 1437B	SERIES SMP	PART NUMBER R222561001
----------	-------------	------------	------------------------



All dimensions are in mm.



COMPONENTS	MATERIALS	PLATING (µm)
Body	STAINLESS STEEL	PASSIVATED
Center contact	BERYLLIUM COPPER	GOLD OVER NICKEL
Outer contact	-	-
Insulator	PTFE	-
Gasket	-	-
Others parts	-	-
-	-	-
-	-	-

PAGE 2/3	ISSUE 1437B	SERIES SMP	PART NUMBER R222561001
----------	--------------------	-------------------	-------------------------------

PACKAGING

Standard	Unit	Other
100	Contact us	Contact us

ELECTRICAL CHARACTERISTICS

Impedance		50	Ω	
Frequency		0-12	GHz	
VSWR	1.3 +	0.0000	x F(GHz) Maxi	
Insertion loss		0.12	√F(GHz) dB Maxi	
RF leakage	- (NA	- F(GHz) dB Maxi	
Voltage rating		335	Veff Maxi	
Dielectric withstanding voltage		500	Veff mini	
Insulation resistance		5000	MΩ mini	

MECHANICAL CHARACTERISTICS

Center contact retention				
Axial force – Mating End		NA	N mini	
Axial force – Opposite end		NA	N mini	
Torque		NA	N.cm mini	
Recommended torque				
Mating		NA	N.cm	
Panel nut		90	N.cm	
Mating life		100	Cycles mini	
Weight		0.4500	g	

ENVIRONMENTAL

Operating temperature	-65/+165	°C
Hermetic seal	NA	Atm.cm3/s
Panel leakage	NA	

SPECIFICATION

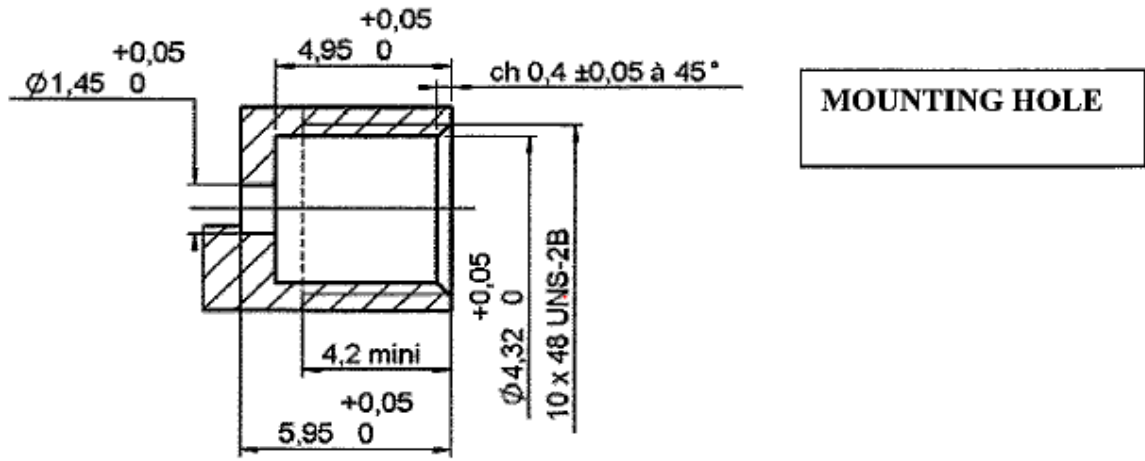
OTHER CHARACTERISTICS

Assembly instruction:

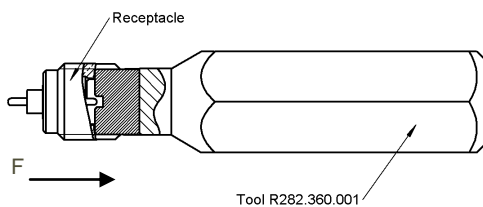
Others:
See page 3

PAGE 3/3	ISSUE 1437B	SERIES SMP	PART NUMBER R222561001
----------	-------------	------------	------------------------

**ADDITIONAL INFORMATIONS
 MOUNTING AND REPLEACEMENT INSTRUCTIONS**



1. Connector must be screwed or unscrewed with adapted torque driver R282.339.001 (recommended coupling torque : 90 Ncm) screw driver : R282.360.001
2. Slide on the connector in F direction until it stops against the tool.



3. Screw the whole into the housing until activation of the torque driver.
4. Withdraw the tool and solder the center contact.

