

MICRO SWITCH

A DIVISION OF MINNEAPOLIS-HONEYWELL REGULATOR COMPANY
PROSPER, MINNESOTA

FED. MFR. CODE 91929

SWITCH-BASIC

CATALOG LISTING
BZ-2G-A2

5

THIS DRAWING COVERS A PROPRIETARY ITEM AND IS THE PROPERTY OF MICRO SWITCH, A DIVISION OF HONEYWELL. THIS DRAWING IS NOT TO BE COPIED OR USED WITHOUT THE APPROVAL OF MICRO SWITCH.

(M) BZ-2G-A2
ISSUE 2

BZ-2G-A2

M

DRAWING NUMBER

ISSUE 8

REPLACES

RELEASE NO.

CHECK

11 FEB 57

C.N.T.

CHECK

12 FEB 57

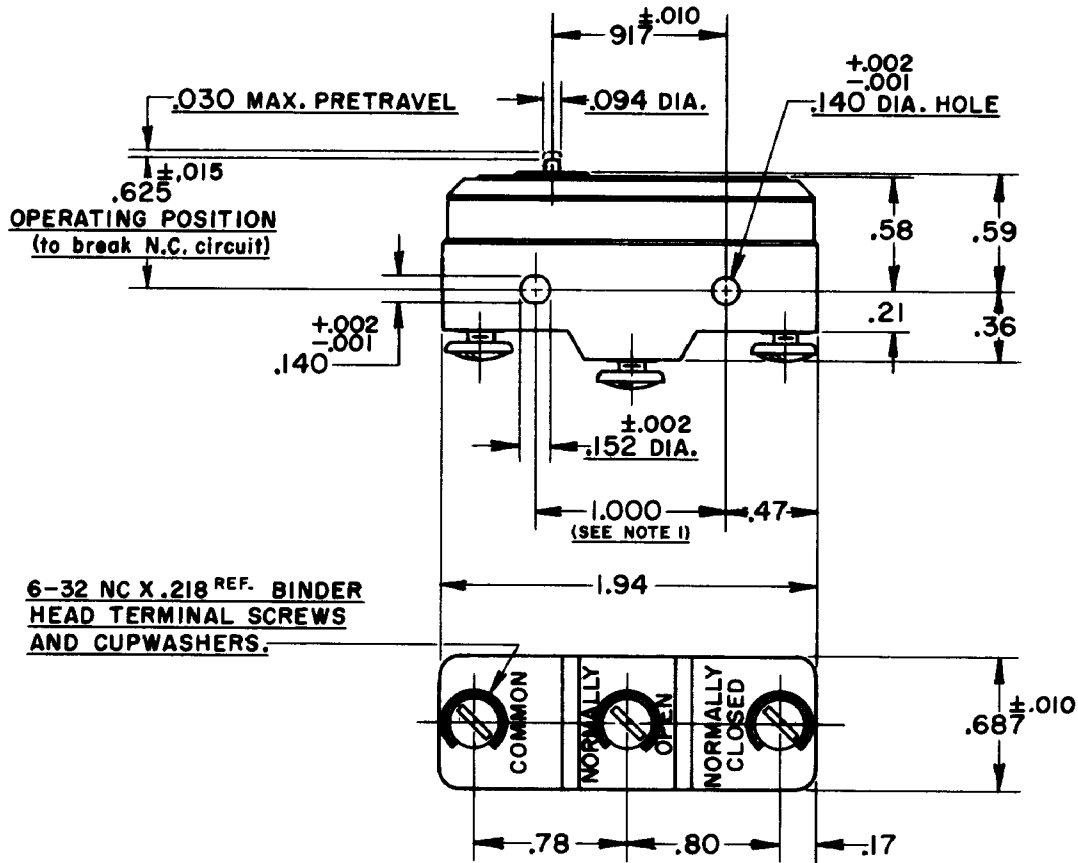
G.C.H.

CHECK

14 JAN 57

DRAWN

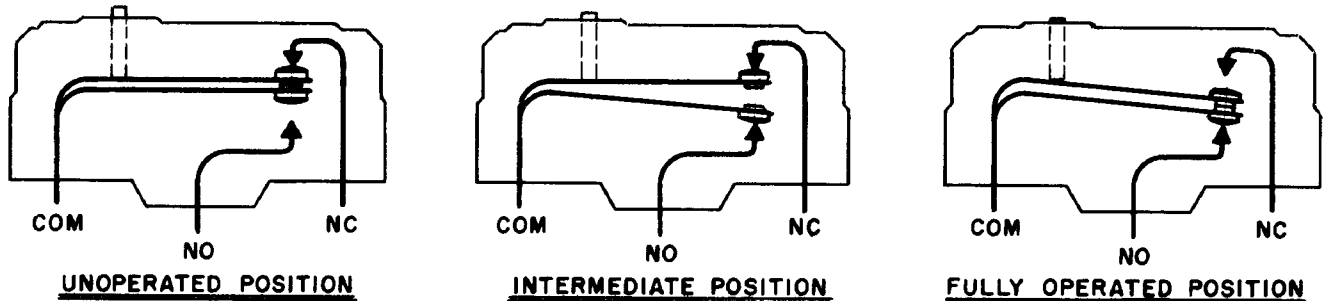
FO-50378



6-32 NC X .218 REF. BINDER HEAD TERMINAL SCREWS AND CUPWASHERS.

NOTE-
I-MOUNTING HOLES WILL ACCEPT PINS OR SCREWS OF .139 MAX. DIA. ON $1.000 \pm.002$ CENTERS.

SEQUENCE OF OPERATION



CHARACTERISTICS

OPERATING FORCE (to break N.C. circuit) 20 OZ. MAX.
RELEASE FORCE (to break N.O. circuit) 8 OZ. MIN.
DIFFERENTIAL TRAVEL (between breaking of N.C. and breaking of N.O. circuits) .015 MAX.
OVERTRAVEL (after breaking N.C. circuit) .005 MIN.
Plunger travel between operating positions and between release positions .005-.010

ELECTRICAL DATA

CONTACT ARRANGEMENT S.P.D.T. Make before break
L9 10A 125, 250 OR 480 VAC
1/2A 125 VDC, 1/4A 250 VDC

SCALE FULL

DO NOT SCALE PRINT
UNLESS OTHERWISE SPECIFIED DIMENSIONS ARE IN INCHES
TOLERANCES ARE:
ONE PLACE (.0) $\pm.030$
TWO PLACE (.00) $\pm.015$
THREE PLACE (.000) $\pm.005$
ANGLES \pm

WEIGHT

