

# MICRO SWITCH

FREERPORT ILLINOIS, U.S.A  
A DIVISION OF HONEYWELL  
FED. MFG. CODE 91929

# SWITCH-BASIC

CATALOG LISTING

BZ-7RW8055151-A2-S

**M** BZ-7RW8055151-A2-S  
PAGE 1 OF 1

REPLACES X93040-BZ

RELEASE NO. PR-18821

DRAWING NUMBER

ISSUE

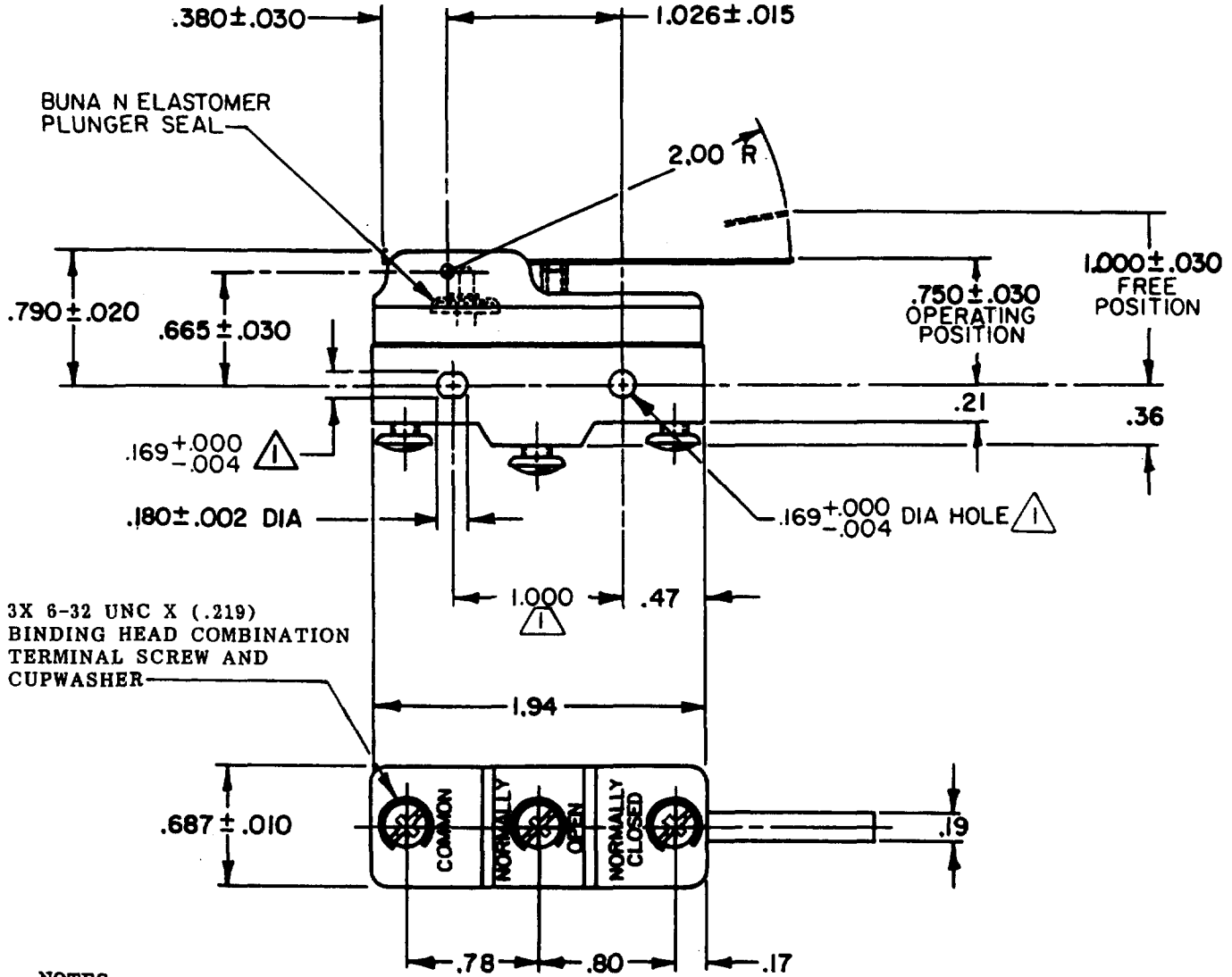
3

CHECK

REVISIONS

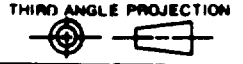
A	CO-73287-J	JAL	22 NOV 93
B	C093346	DLT	17 AUG 98

CHECK



- NOTES**
- 1 MOUNTING HOLES WILL ACCEPT PINS OR SCREWS OF .165 MAX DIA ON 1.000 ± .002 CENTERS
  - 2 - SEALED CONSTRUCTION PROVIDES SPLASH RESISTANCE

THIS DRAWING COVERS A PROPRIETARY ITEM AND IS THE PROPERTY OF MICRO SWITCH, A DIVISION OF HONEYWELL. THIS DRAWING IS NOT TO BE COPIED OR USED WITHOUT THE APPROVAL OF MICRO SWITCH.



CHARACTERISTICS
OPERATING FORCE-----4 1/4 OZ. MAX
RELEASE FORCE-----3/4 OZ. MIN.
DIFFERENTIAL TRAVEL-----.045-.100
OVERTRAVEL-----.172 MIN.

ELECTRICAL DATA
CONTACT ARRANGEMENT S P D T
10A 125, 250 OR 480 VAC 1/2 A 125 VDC, 1/4 A 250 VDC
L9 RJ CE L288

SCALE FULL	DO NOT SCALE PRINT
UNLESS OTHERWISE SPECIFIED TOLERANCES ARE	
ONE PLACE (.0)	± .030
TWO PLACE (.00)	± .016
THREE PLACE (.000)	± .008
ANGLES	±
WEIGHT .076 LBS.	

FORMTEK  
FO-52848-A  
DRAWN  
B A B15 DEC 90 CHECK JAP 7 DEC 90