

# DEVELOPMENT BOARD ENCLOSURES

## RASPBERRY PI STYLE ENCLOSURES

### Pi-Blox Enclosures

Compatible with construction blocks from the leading manufacturers

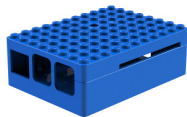
- Designed to house the *Raspberry Pi B+ or Pi 2*
- Studs allow for construction blocks to be fitted directly to the enclosure
- All cut-outs are pre-cut into the case
- I/O Connector can be accessed through a slot in the side of the enclosure
- Internal Mount points for Pi Camera
- Camera lens and flash holes included
- Gloss Finish
- L 88.8mm x W 64.5mm x H 30.5mm

**Material:**

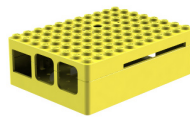
- ABS UL94-HB



Available in a range of colours: Gloss Finish



Blue



Yellow



Red



White



Black

CB PART NO.	COLOURS
CBPIBLOX-BLU	Blue
CBPIBLOX-YEL	Yellow
CBPIBLOX-RED	Red
CBPIBLOX-WHT	White
CBPIBLOX-BLK	Black

- UNIVERSAL ENCLOSURES
- HAND HELD CASES
- HEAVY DUTY ENCLOSURES
- DIN RAIL BOXES
- INTERFACE SUPPORTS
- CONTROL STATIONS
- DIECAST & METAL BOXES
- DESKTOP & INSTRUMENT CASES
- POTTING BOXES
- 19" ENCLOSURES
- 19" CABINETS
- DEVELOPMENT BOARD ENCLOSURES
- CUSTOM SIZED ENCLOSURES
- CUSTOM SERVICES