



cover closed

4-Channel MiniFlex® Model ML914

Four channel logger includes four integral 6" flexible current probes

► SPECIFICATIONS

MODEL	ML914	
ELECTRICAL		
Channels	Four	
Input	6" Captive AC MiniFlex® Flexible Sensors	
Range	1 to 100Aac	5 to 1000Aac
Accuracy (50/60Hz)	0 to 1A unspecified 1 to 100A: ±(1% of Reading + 0.5A)	0 to 5A unspecified 5 to 1000A: ±(1% of Reading + 1A)
Resolution	0.1A	
Sample Rate	64 samples/cycle	
Storage Rate	Programmable from 125ms to 1 per day	
Storage Modes	Start/Stop, FIFO, Extended Recording Mode (XRM™)	
Recording Length	15 minutes to 8 weeks, programmable using DataView®	
Memory	1,000,000 measurements (2MB) The recorded data is stored in non-volatile memory and will be retained even if the battery is low or removed.	
Communication	Bluetooth connection (communicates up to 30 ft)	
Power Source	4 x 1.5V C-Cell Alkaline batteries (included)	
Battery Life	Up to 180 days (dependent on storage rate/recording length)	
MECHANICAL		
Dimensions	5.904 x 5.904 x 3.568" (150 x 150 x 91mm) w/o Sensor	
Max Conductor Size	1.77" (45mm) diameter	
Weight (with battery)	2.4 lbs (1.1kg)	
Case	UL94-V0	
Vibration	IEC 68-2-6 (1.5mm, 10 to 55Hz)	
Shock	IEC 68-2-27 (30G)	

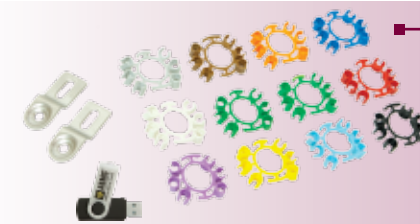
► FEATURES

- Includes four integral MiniFlex® flexible current probes that will measure up to 1000A TRMS with 0.1A resolution
- Dual range 100/1000A user selectable per channel
- 64 samples per cycle
- Programmable storage rates from 125ms to 1 per day
- 4 user selectable storage modes
- Stores up to 1,000,000 measurements in non-volatile memory
- Powered by standard Alkaline batteries for a period of up to 180 days
- Lightweight and compact
- 6 LED indicators quickly and clearly display logger status
- Wireless *Bluetooth* data communication (Class 2 *Bluetooth* module included)
- Includes FREE DataView® software for data storage, real-time display, analysis and report generation
- EN 61010-1; 600V CAT IV, 1000V CAT III

► APPLICATIONS

- Single/Split phase and 3 phase load monitoring
- Neutral and ground current monitoring
- Intermittent problem detection
- Harmonic current monitoring using DataView® software
- Machine load monitoring
- Fault current detection
- Load profiling

► PRODUCT INCLUDES



Bluetooth USB adapter, twelve color-coded input ID markers, mounting hardware, 4 x 1.5V C-Cell Alkaline batteries, USB cable for firmware updates, and USB stick supplied with DataView® software and user manual.

CATALOG NO.	DESCRIPTION
-------------	-------------

2126.40 Simple Logger® II Model ML914 (4-Channel, TRMS, *Bluetooth*, MiniFlex® 100/1000Aac, DataView® software)

DataView®

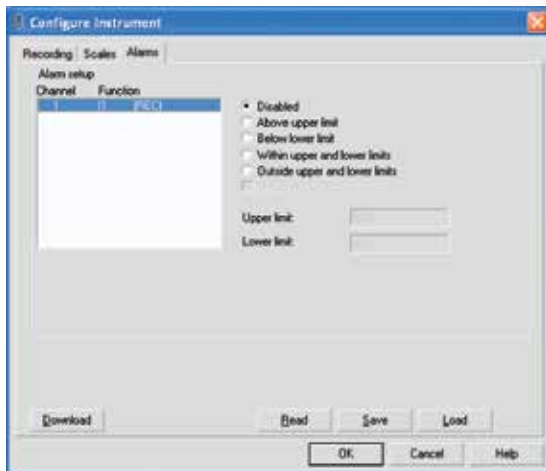
Data Analysis and Reporting Software for Data Loggers



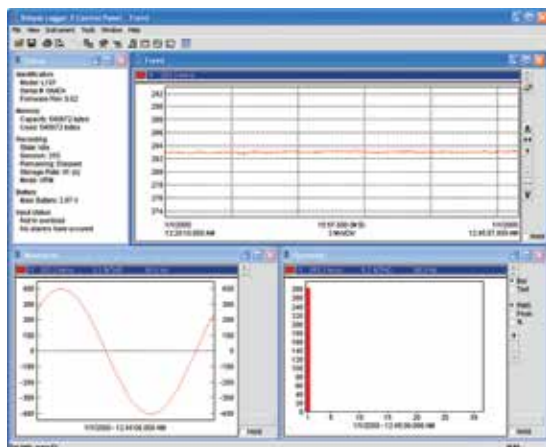
Typical DataView® Functional Displays



Quick and simple configuration of all functions and settings from one dialog box.



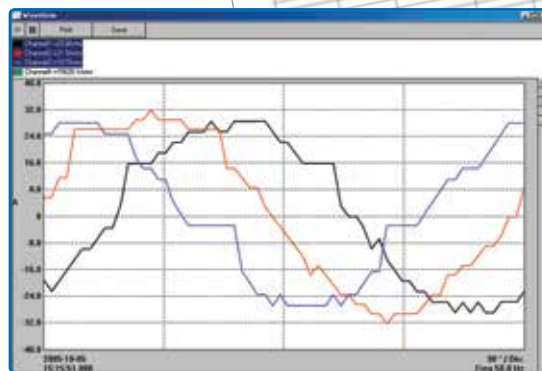
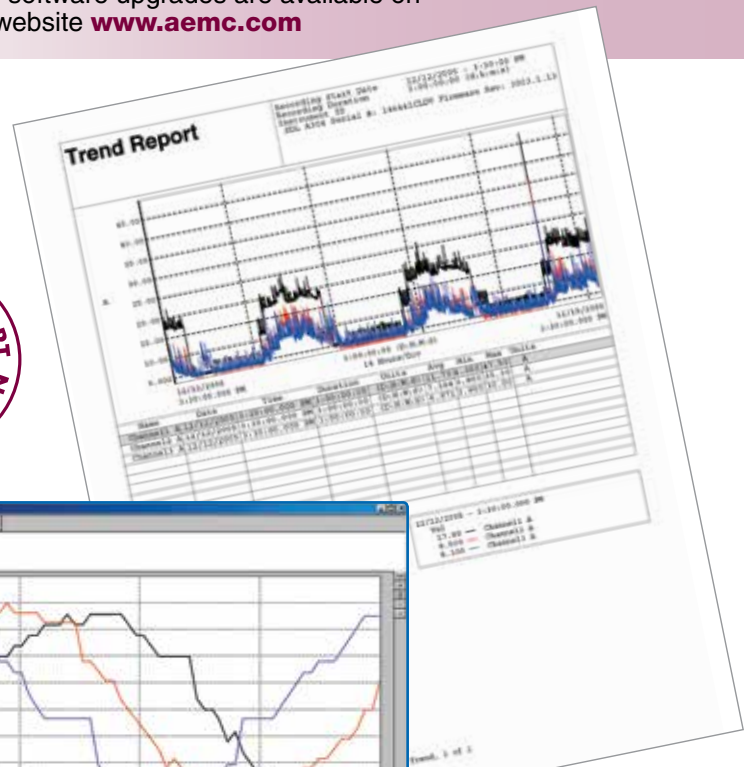
Configure all alarm functions with straightforward selections.



Real-time view of trend, waveform and status screens.

Configure all data logger functions of the Simple Logger® II Models

- Display and analyze real-time data on your PC
- Configure all data logger functions and parameters from your PC including sample rate, recording length, channel configuration and more
- Create and store a complete library of configurations that can be uploaded to the logger as needed
- Zoom in and out and pan through sections of the graph to analyze the data
- Download, display and analyze recorded data
- Display waveforms, trend graphs, harmonics (AC models) and text summaries
- Create custom views and reports
- Print reports using standard or custom templates you design
- Free software upgrades are available on our website www.aemc.com



Real-time display of all active inputs on computer through DataView® software.