



new



Description

- Panel Mount:
Screw-on from front side
- 2 Functions:
Appliance Inlet Protection class I, Line filter in standard and medical version
- Solder, quick connect or wires (stranded)

Approvals

- VDE Certificate Number: 104884
- UL File Number: E72928

Characteristics

- Compact design with optimal shielding
Suitable for high ambient temperatures up to 75°C
- Version with class X1 and X2 (standard version) capacitors
- Universal line filter for standard applications
Designed for standard and medical applications
- Suitable for use in equipment according to IEC/UL 60950
Suitable for use in medical equipment according to IEC/UL 60601-1

Other versions on request

- flexible wire with various lengths

References

Alternative: version without line filter [1681](#)

Weblinks

[pdf-datasheet](#), [html-datasheet](#), [General Product Information](#), [RoHS](#), [CHINA-RoHS](#), [REACH](#), [Mating Connectors](#), [e-Shop](#), [SCHURTER-Stock-Check](#), [Distributor-Stock-Check](#), [Accessories](#), [Wire Harnessing](#)

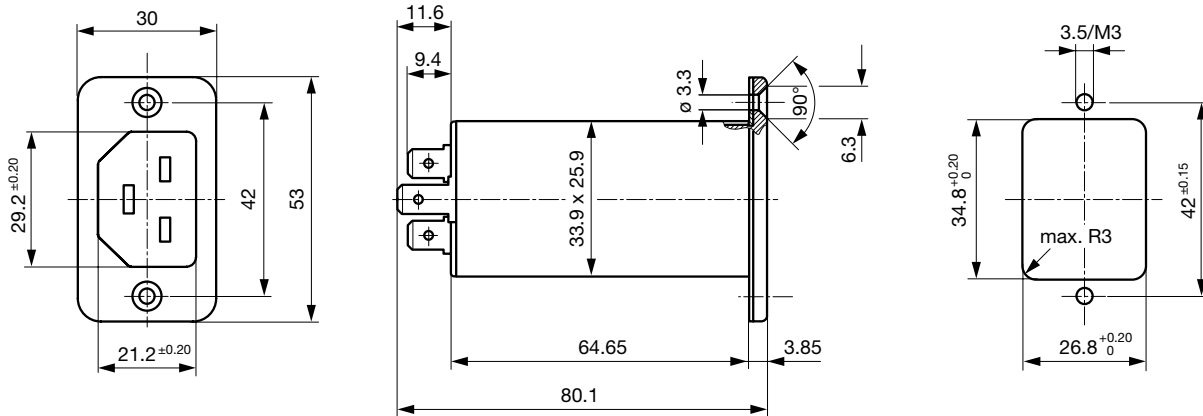
Technical Data

Ratings IEC	16A @ Ta 75 °C / 250 VAC; 50Hz
Ratings UL/CSA	20A @ Ta 65 °C / 250 VAC; 60Hz
Leakage Current	standard < 0.5 mA (250 V / 60Hz) medical < 5 µA (250 V / 60 Hz)
Dielectric Strength	> 1.7 kVDC between L-N (Cy2) > 2.7 kVDC between L/N-PE (Cy2) Test voltage (2 sec)
Impulse Withstand Voltage	> 2.5 kV between L-N (CX2) > 4 kV between L-N (CX1) > 5 kV between L/N-PE (Cy2) voltage (1.2/50 µs)
Allowable Operation Temp.	-25 °C to 100 °C
Climatic Category	25/100/21 acc. to IEC 60068-1
Degree of Protection	from front side IP 40 acc. to IEC 60529
Protection Class	Suitable for appliances with protection class I acc. to IEC 61140
Terminal	Solder, quick connect or wires (stranded)
Panel Thickness s	Screw: max 8 mm Mounting screw torque max 0.5 Nm
Material: Housing	Thermoplastic, black, UL 94V-0

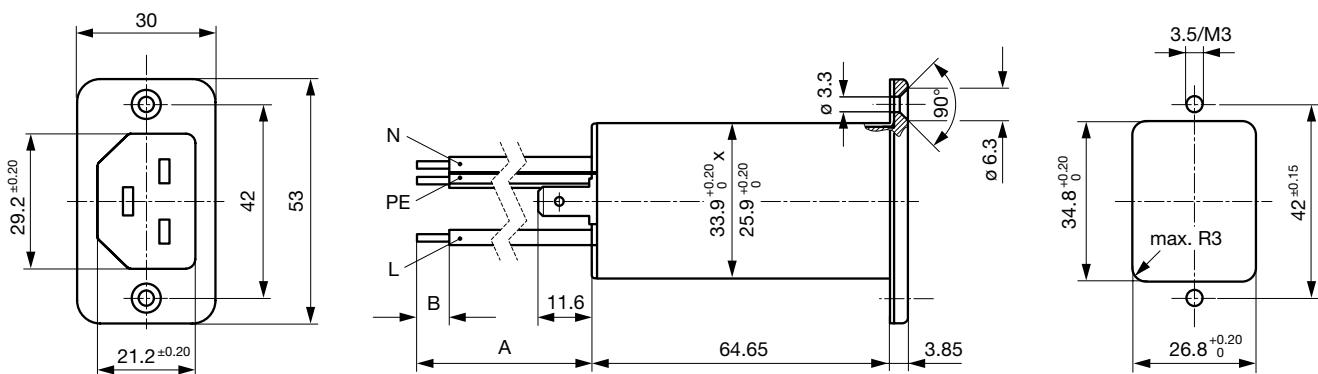
Appliance-Inlet/-Outlet	C22 acc. to IEC 60320, UL 498, CSA C22.2 no. 42 (for hot conditions) pin-temperature 155 °C, 16A, Protection Class I
Line Filter	Standard and Medical Version, IEC 60939, UL 1283, CSA C22.2 no. 8 Technical Details
MTBF	> 1'400'000 h acc. to MIL-HB-217 F

Dimension

Screw-on mounting with quick connect terminals



Screw-on mounting with wire leads



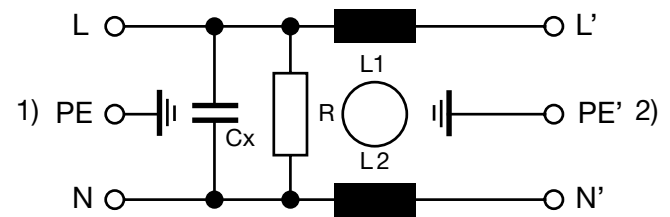
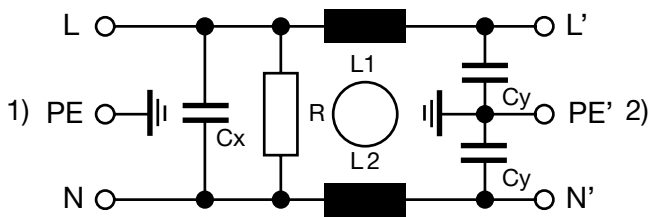
Technical Data of Filter-Components

Rated Current [A]	Filter-Type	Inductances L [mH]	Capacitance CX [nF]	Capacitance CY [nF]	R [MΩ]
16	Standard Version	2 x 0.6	100	2.2	1
16	Standard Version	2 x 0.6	330	2.2	1
20	Standard Version	2 x 0.3	100	2.2	1
20	Standard Version	2 x 0.3	330	2.2	1
16	Medical Version (M5)	2 x 0.6	100	-	1
20	Medical Version (M5)	2 x 0.3	100	-	1
20	Medical Version (M5)	2 x 0.3	330	-	1
16	Medical Version (M80)	2 x 0.6	100	0.47	1
20	Medical Version (M80)	2 x 0.3	100	0.47	1

Diagrams

Standard or medical version (M80)

Medical version



1) Line
2) Load

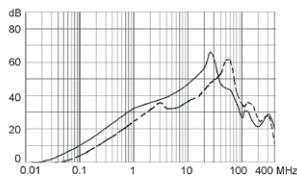
1) Line
2) Load

Attenuation Loss

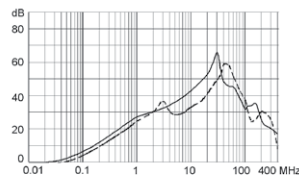
--- differential mode ____ common mode

Standard version

16 A

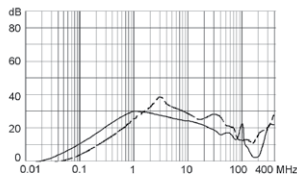


20 A

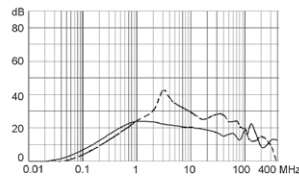


Medical version (M5)

16 A

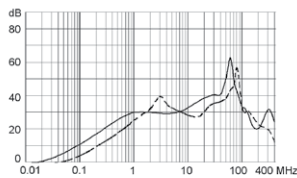


20 A

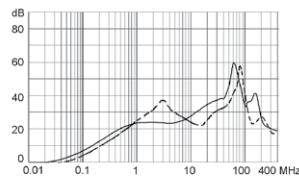


Medical version (M80)

16 A



20 A



All Variants

Rated Current IEC [A]	Rated Current UL [A]	Filter-Type	Panel mounting	Mounting side	Terminal	Capacitor	Order Number
16	16	Standard Version	Screw	Front Side	Quick connect terminals 6.3 x 0.8	X2 330nF	C22F.1107
16	20	Standard Version	Screw	Front Side	Quick connect terminals 6.3 x 0.8	X2 100nF	C22F.0101
16	16	Standard Version	Screw	Front Side	Quick connect terminals 6.3 x 0.8	X2 100nF	C22F.1101
16	20	Standard Version	Screw	Front Side	Quick connect terminals 6.3 x 0.8	X1 100nF	C22F.0103
16	20	Standard Version	Screw	Front Side	Solder terminal	X2 330nF	C22F.0007
16	20	Standard Version	Screw	Front Side	Solder terminal	X2 100nF	C22F.0001
16	16	Standard Version	Screw	Front Side	Solder terminal	X2 100nF	C22F.1001
16	20	Standard Version	Screw	Front Side	Solder terminal	X1 100nF	C22F.0003

16	20	Medical Version (M5)	Screw	Front Side	Quick connect terminals 6.3 x 0.8	X2 100nF	C22F.0102
16	16	Medical Version (M5)	Screw	Front Side	Quick connect terminals 6.3 x 0.8	X2 100nF	C22F.1102
16	20	Medical Version (M5)	Screw	Front Side	Solder terminal	X2 330nF	C22F.0008
16	20	Medical Version (M5)	Screw	Front Side	Solder terminal	X2 100nF	C22F.0002
16	16	Medical Version (M5)	Screw	Front Side	Solder terminal	X2 100nF	C22F.1002
16	16	Medical Version (M80)	Screw	Front Side	Solder terminal	X2 100nF	C22F.1005

Availability for all products can be searched real-time: <http://www.schurter.com/en/Stock-Check/Stock-Check-SCHURTER>

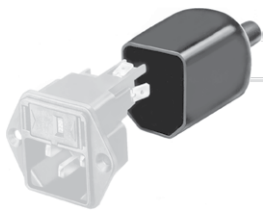
Packaging unit 20 Pcs

Accessories

Description



Wire Harness
Wire harness for SCHURTER products



Assorted Covers
Rear Cover

Mating Outlets/Connectors

Category / Description



[Interconnection Cord Overview complete](#)

IEC Interconnection cord with IEC Connector C21, straight 6051.5003

[Interconnection Cord further types to C22F](#)



[Power Supply Cord Overview complete](#)

EU Power Supply Cord with IEC Connector C21, straight 6051.5001

US Power Supply Cord with IEC Connector C21, straight 6051.5002

[Power Supply Cord further types to C22F](#)